

R-88447

# ZACHARY WELCH MANDOLIN CREEK POND 1, POND 2, AND POND 3 EXHIBIT MAP MAY 19, 2017

TAXLOT 1300, MAP 11705

RESERVOIRS LOCATED IN THE NW 1/4  
OF THE NE 1/4 OF SECTION 8  
TOWNSHIP 11 SOUTH, RANGE 5 WEST,  
W.M.

**LEGEND**

—————	TAXLOT BOUNDARY
- - - - -	SECTION BOUNDARY
⊕	DAM
⊗	1/4 CORNER MONUMENT



SCALE 1" = 400'

DISTANCE FROM 1/4  
CORNER TO DAM 1:  
287' EAST, 189' SOUTH

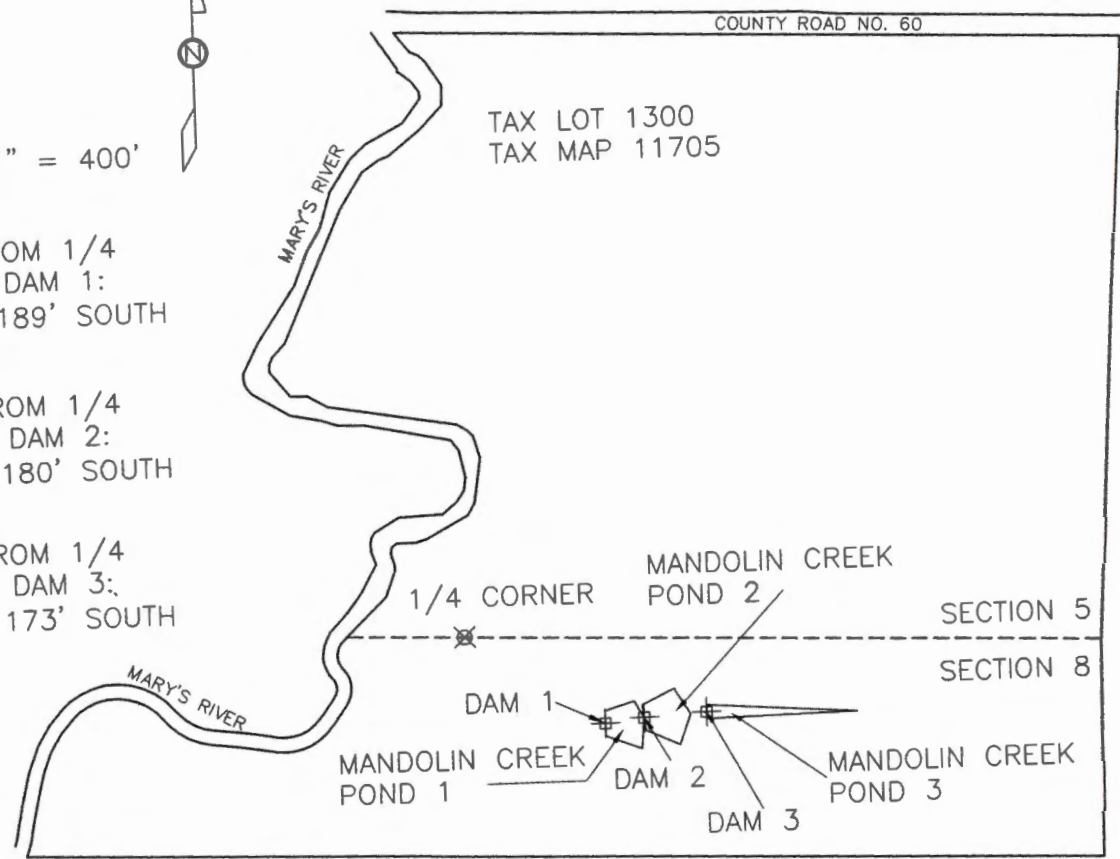
DISTANCE FROM 1/4  
CORNER TO DAM 2:  
367' EAST, 180' SOUTH

DISTANCE FROM 1/4  
CORNER TO DAM 3:  
497' EAST, 173' SOUTH

RECEIVED BY OWRD

AUG 18 2017

SALEM, OR



**JDMcGee, Inc.**  
 Engineering & Surveying 1215 Main Street  
 Land Use Planning PO Box 1472  
 Wastewater Design Philomath, OR 97370  
 "Solving Problems for You" (541) 929-4226  
 (541) 929-4227 Fax

DRAWN BY: RJM CHECKED BY: JDM  
 JDM PROJECT #: 16-75