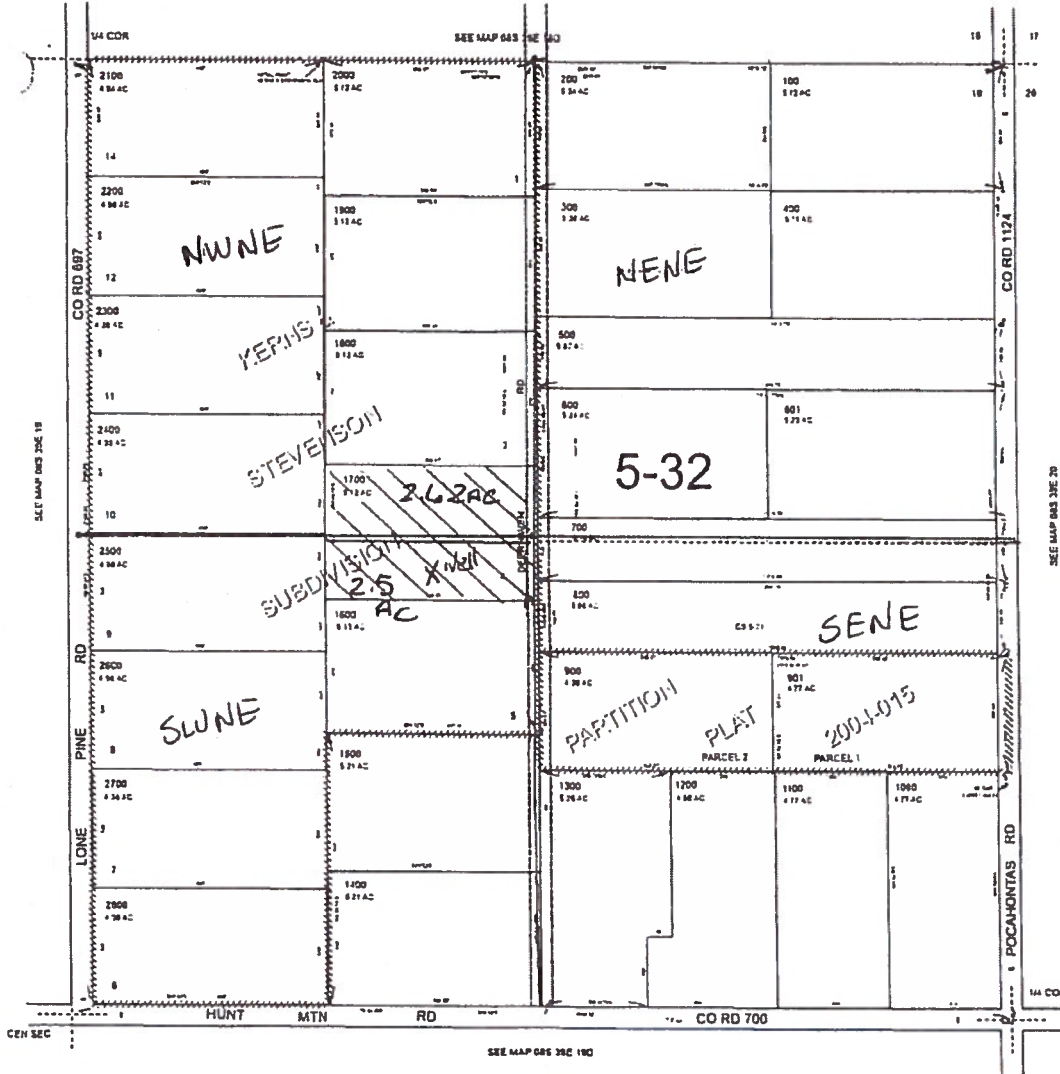


THIS MAP WAS PREPARED FOR ASSESSMENT PURPOSE ONLY



N.E. 1/4 SEC. 19 T.8S. R.39E. W.M.
BAKER COUNTY
1" = 200'

08S39E19A



From NE CORNER, SECTION 19
1630 ft West
1440 ft SOUTH
This will be the well location.

Kathryn Wilson
5/17/18

G-18553

Revised: DBJ
09/27/2006

08S39E19A

RECEIVED

MAY 17 2018

OWRD