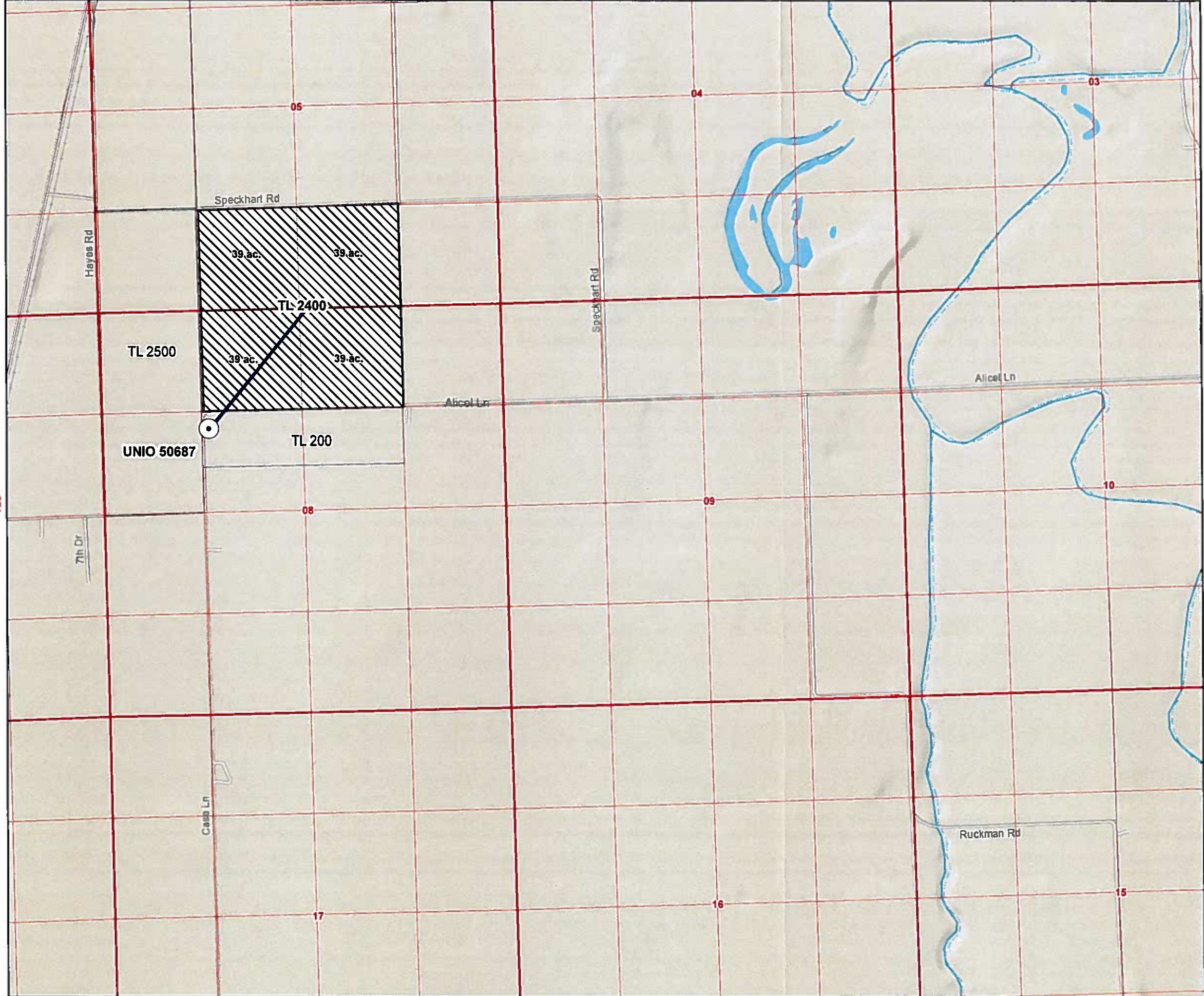


R39E



### Groundwater Application for Mauri DeLint

Township 2 South, Range 39 East (W.M.)  
Union County

#### LEGEND

- Point of Appropriation
- Buried Mainline
- Primary Irrigation
- Tax Lots
- Public Roads
- Highways
- Watercourses
- Waterbodies

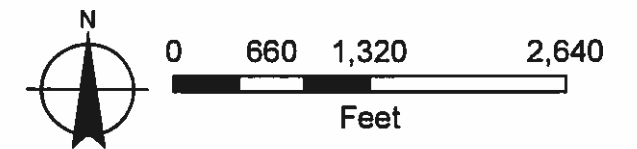
#### Proposed POA Location Descriptions

**UNIO 50687**  
 Located 1650 feet S and 1380 feet E from the NW corner  
 of Section 8, Township 2 South, Range 39 East (W.M.)  
 GPS Location: Latitude: 45.409, Longitude: -117.968

RECEIVED BY OWRD

SEP 25 2017

SALEM, OR



#### Disclaimer

This map was prepared for the purpose of identifying the location of a water right only and it is not intended to provide legal dimensions or location of property ownership lines.

#### Map Notes

Date: May 9, 2017  
 Data Sources: ESRI, BLM, USGS  
 Prepared By: EA Engineering



G-18560