

This map was prepared for assessment purpose only.

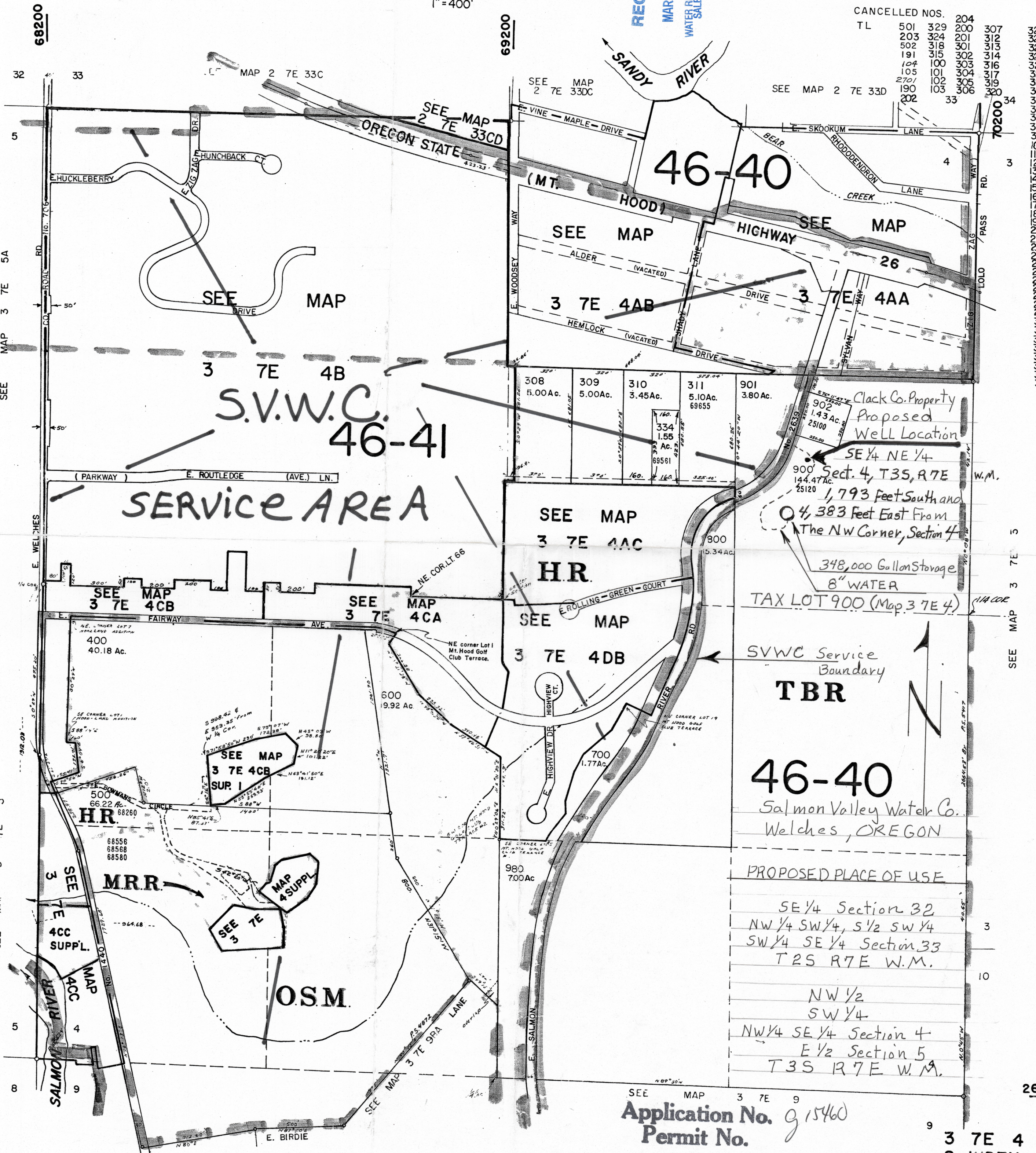
SECTION 4 T.3S. R.7E. W.M.
CLACKAMAS COUNTY
1" = 400'

RECEIVED
MAR 27 2001
WATER RESOURCES DEPT
SALEM, OREGON

3 7E 4
& INDEX

CANCELLED NOS.

TL	501	329	204	307
	203	324	201	312
	502	318	301	313
	191	315	302	314
	104	100	303	316
	105	101	304	317
	2701	102	305	319
	190	103	306	320
	202			33



PROPOSED PLACE OF USE

SE 1/4 Section 32
 NW 1/4 SW 1/4, S 1/2 SW 1/4
 SW 1/4 SE 1/4 Section 33
 T2S R7E W.M.

NW 1/2
 SW 1/4
 NW 1/4 SE 1/4 Section 4
 E 1/2 Section 5
 T3S R7E W.M.

Application No. 915460
 Permit No.

3 7E 4
& INDEX
BOOK 34