

This map was prepared for assessment purpose only.

SECTION 4 T.3S. R.7E. W.M.

CLACKAMAS COUNTY

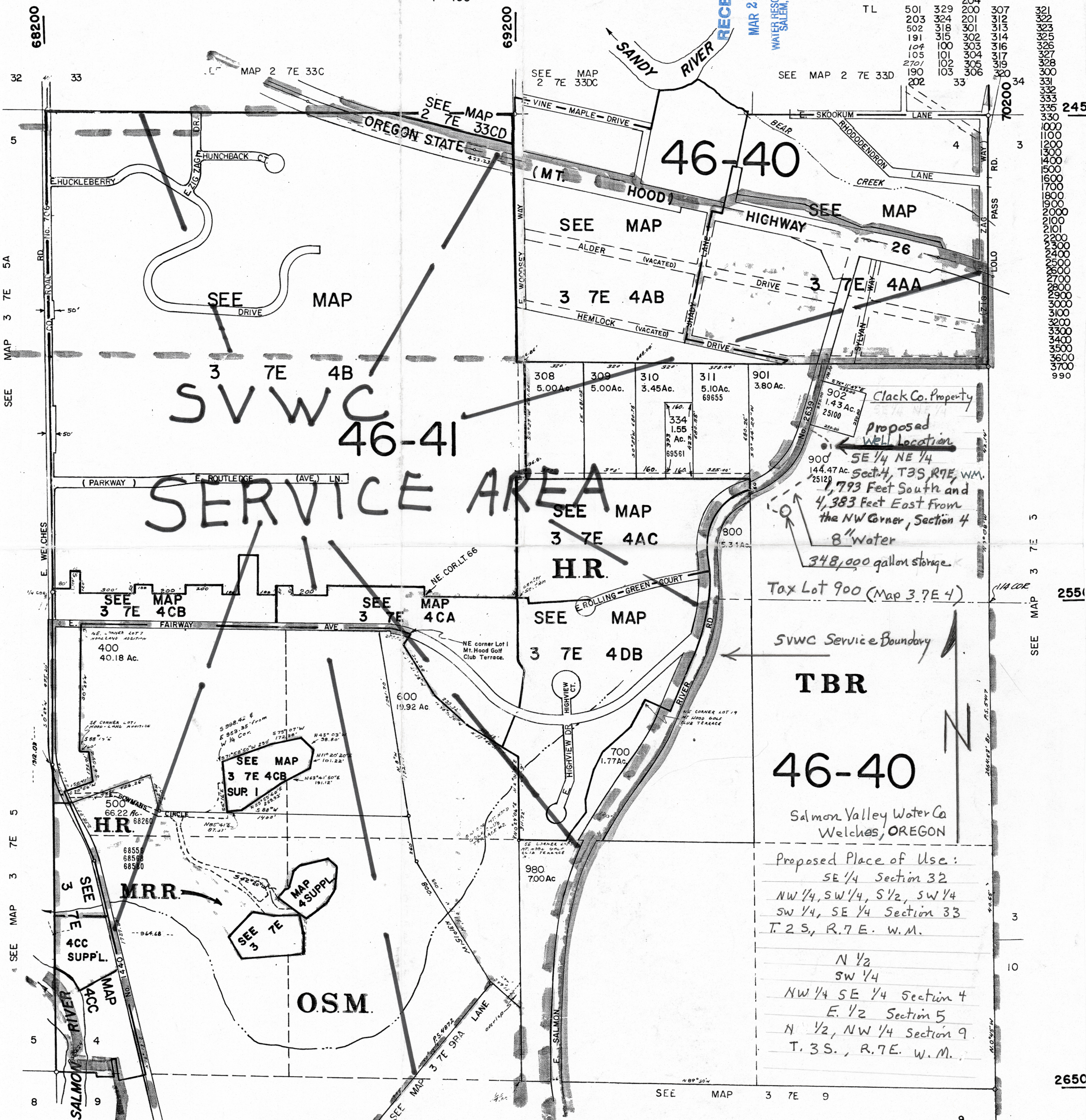
1"=400'

3 7E 4  
& INDEX

CANCELLED NOS.

TL	501	329	204	307
	203	324	201	312
	502	318	301	313
	191	315	302	314
	104	100	303	315
	105	101	304	316
	2701	102	305	317
	190	103	306	318
	202			319
				320

321  
322  
323  
324  
325  
326  
327  
328  
329  
330  
331  
332  
333  
334  
335  
336  
337  
338  
339  
340  
341  
342  
343  
344  
345  
346  
347  
348  
349  
350  
351  
352  
353  
354  
355  
356  
357  
358  
359  
360  
361  
362  
363  
364  
365  
366  
367  
368  
369  
370  
371  
372  
373  
374  
375  
376  
377  
378  
379  
380  
381  
382  
383  
384  
385  
386  
387  
388  
389  
390  
391  
392  
393  
394  
395  
396  
397  
398  
399  
400



Clack Co. Property  
 Proposed Well Location  
 SE 1/4 NE 1/4  
 Sect. 4, T.3S. R.7E. W.M.  
 1,793 Feet South and  
 4,383 Feet East From  
 the NW Corner, Section 4  
 8" water  
 348,000 gallon storage  
 Tax Lot 900 (Map 3 7E 4)

SVWC Service Boundary  
**TBR**  
**46-40**  
 Salmon Valley Water Co  
 Welches, OREGON  
 Proposed Place of Use:  
 SE 1/4 Section 32  
 NW 1/4, SW 1/4, S 1/2, SW 1/4  
 SW 1/4, SE 1/4 Section 33  
 T. 2 S., R. 7 E. W.M.  
 N 1/2  
 SW 1/4  
 NW 1/4 SE 1/4 Section 4  
 E. 1/2 Section 5  
 N 1/2, NW 1/4 Section 9  
 T. 3 S., R. 7 E. W.M.

Application No. 915460  
 Permit No.

3 7E 4  
& INDEX  
 BOOK 34 AR 0 6 200