

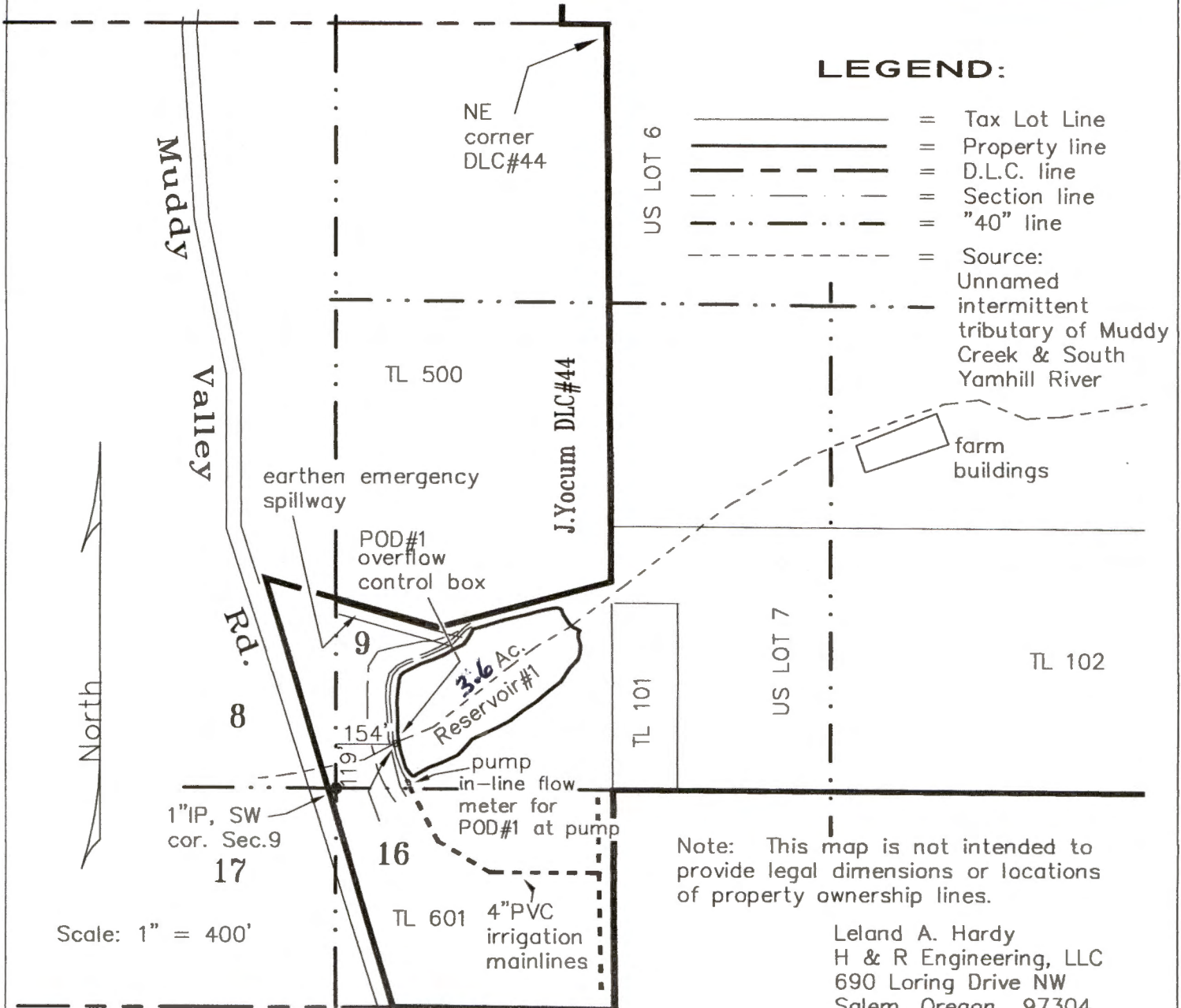
RECEIVED

OCT 24 2017

T. 5 S., R.5 W., W.M.

Location: SW 1/4 of the SW 1/4 of Section 9, NW 1/4 of the NW of Section 16,
T. 5 S., R.5 W., W.M., Yamhill County, OR

OWRD



LEGEND:

- = Tax Lot Line
- = Property line
- - - = D.L.C. line
- · - · = Section line
- · - · = "40" line
- · - · = Source: Unnamed intermittent tributary of Muddy Creek & South Yamhill River

Note: This map is not intended to provide legal dimensions or locations of property ownership lines.

Leland A. Hardy
 H & R Engineering, LLC
 690 Loring Drive NW
 Salem, Oregon 97304
 Phone: 503-581-9272
 Email: Hardyeng@comcast.net

Dam & Reservoir #1

CLAIM OF BENEFICIAL USE MAP

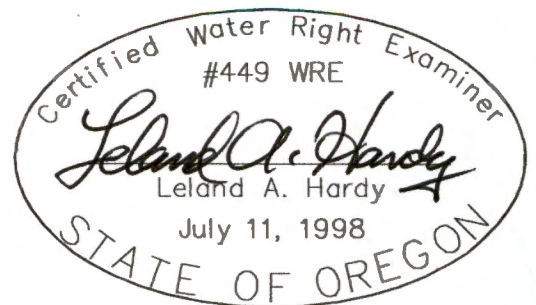
UNDER

Application No. R-84127 Permit No. R-12823

IN NAME OF

MOMTAZI FAMILY, LLC

Surveyed July, 2015



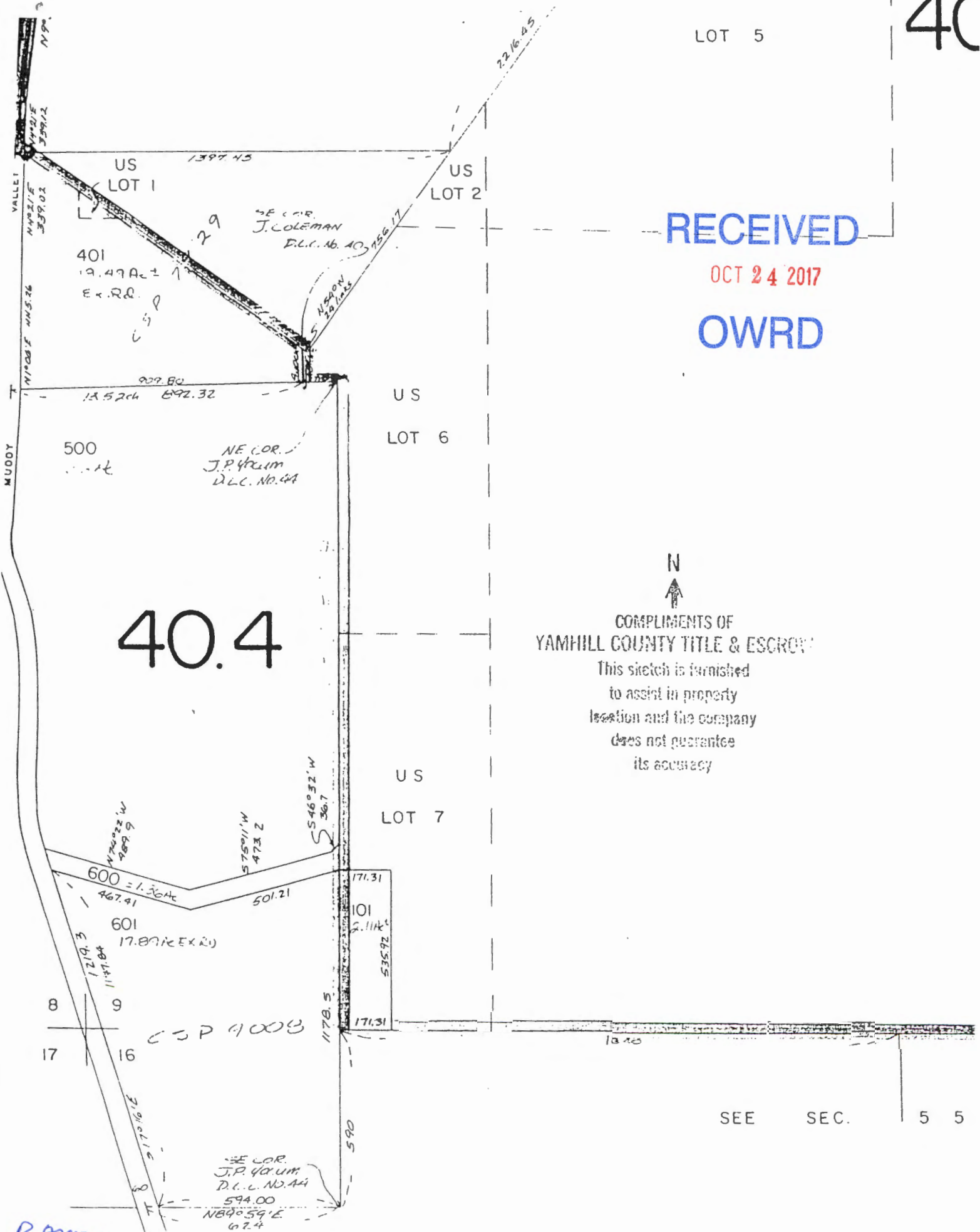
R-88470

LOT 5

RECEIVED

OCT 24 2017

OWRD



R-88470

SEE SEC. 5 5

RECEIVED

OCT 24 2017

OWRD

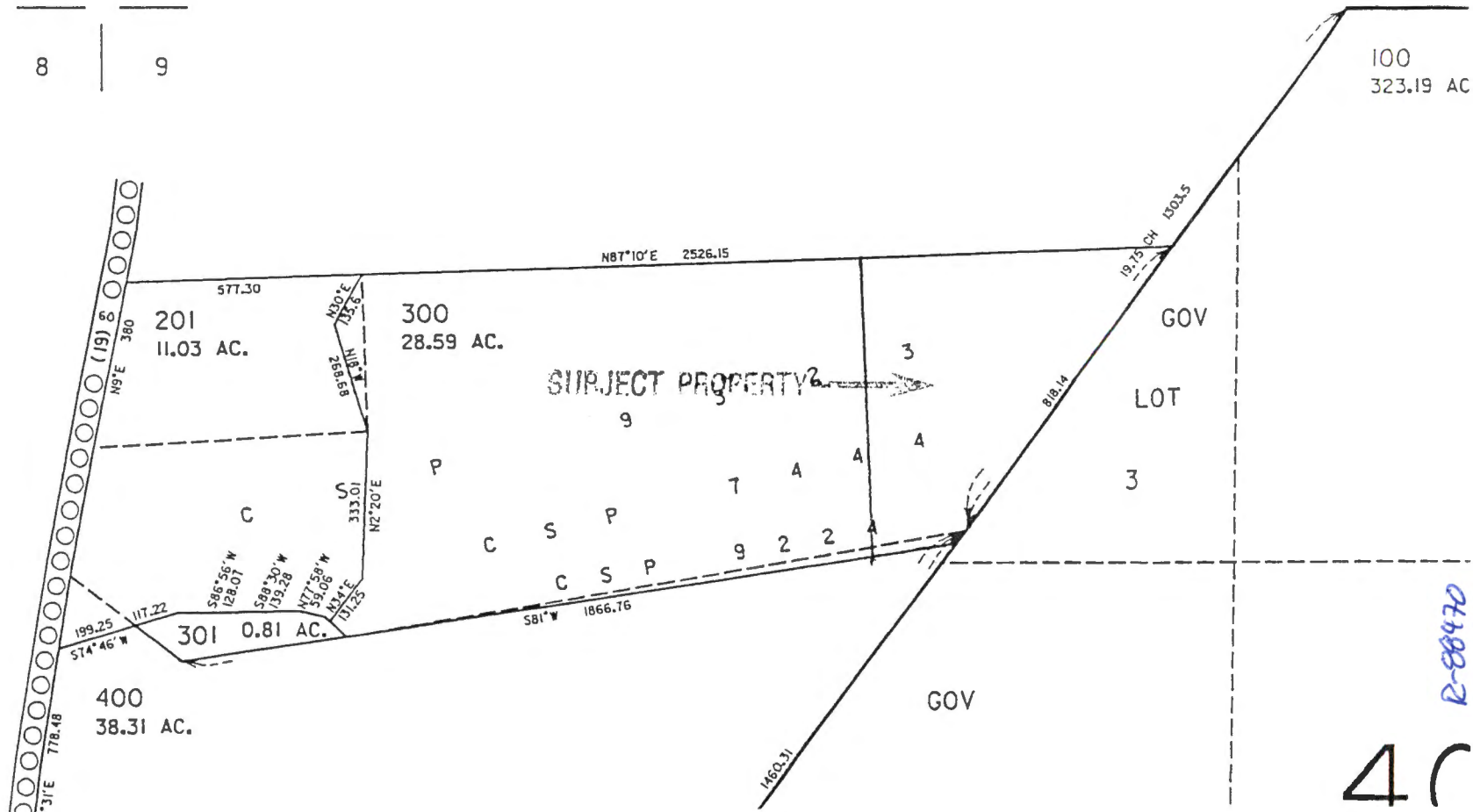
THIS MAP WAS PREPARED FOR ASSESSMENT PURPOSE ONLY

5	4
8	9

This sketch is provided, without charge, for your information. It is not intended to show all matters related to the property including, but not limited to, area, dimensions, easements, encroachments, or location of boundaries. It is not a part of, nor does it modify, the commitment or policy to which it is attached. The Company assumes NO LIABILITY for any matter related to this sketch. Reference should be made to an accurate survey for further information.

SECTION 9 T5S R5W
YAMHILL COUNTY
1" = 400'

SEE MAP 5 5 04



100
323.19 AC

R-88470

4