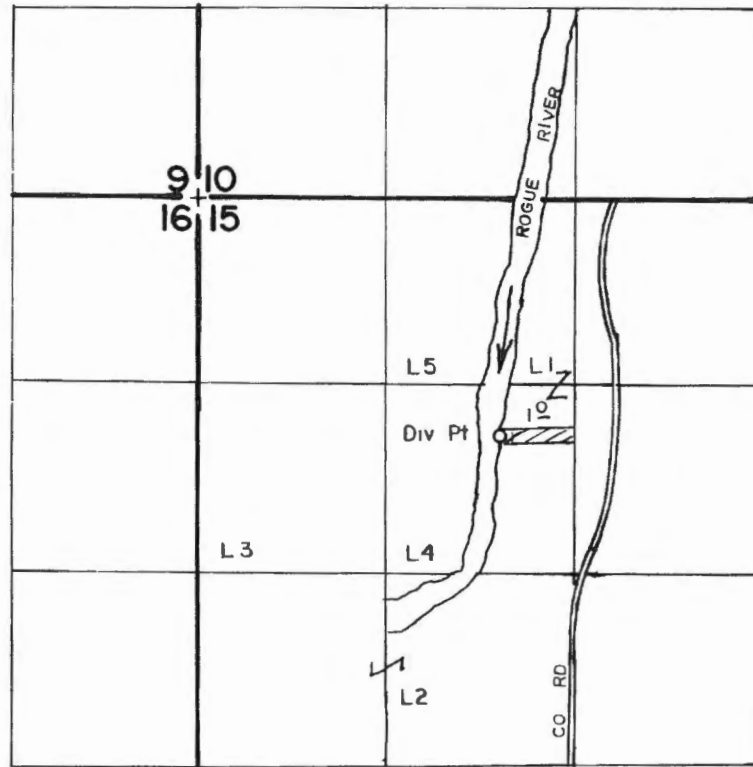


T.34S., R.1W, W. M.



Div Pt Located 1000' N & 510' W From The Center 1/4 Corner Of Section 15

SCALE: 1" = 1320'

**FINAL PROOF SURVEY
UNDER**

TRANSFER NO 5902

Application No. Permit No.
IN NAME OF

JANE L & RENA F. NEUNER.....

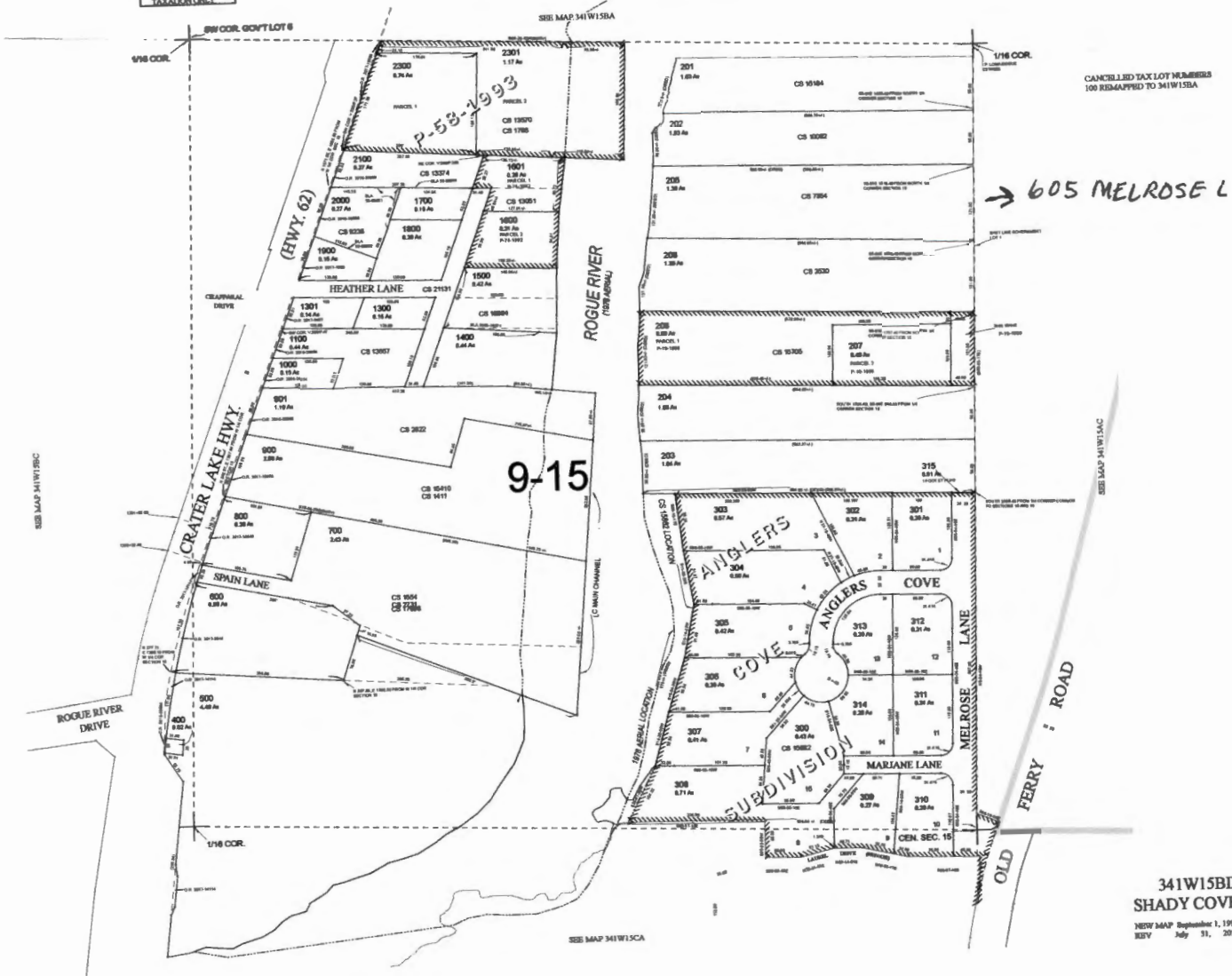
Surveyed MARCH 26 1990., by B.S. JAMES.....

RECEIVED BY OWRD

OCT 30 2017

SALEM, OR

FOR ASSESSMENT AND
TAXATION ONLY



CANCELLED TAX LOT NUMBERS
100 RE-MAPPED TO 341W15BA

→ 605 MELROSE L

9-15

SEE MAP 341W15BC
DATE 08/01/16 BY 02537 AM : jshannon

341W15BD
SHADY COVE
NEW MAP September 1, 1997
REV July 31, 2017

RECEIVED BY OWRD

OCT 30 2017

SALEM, OR

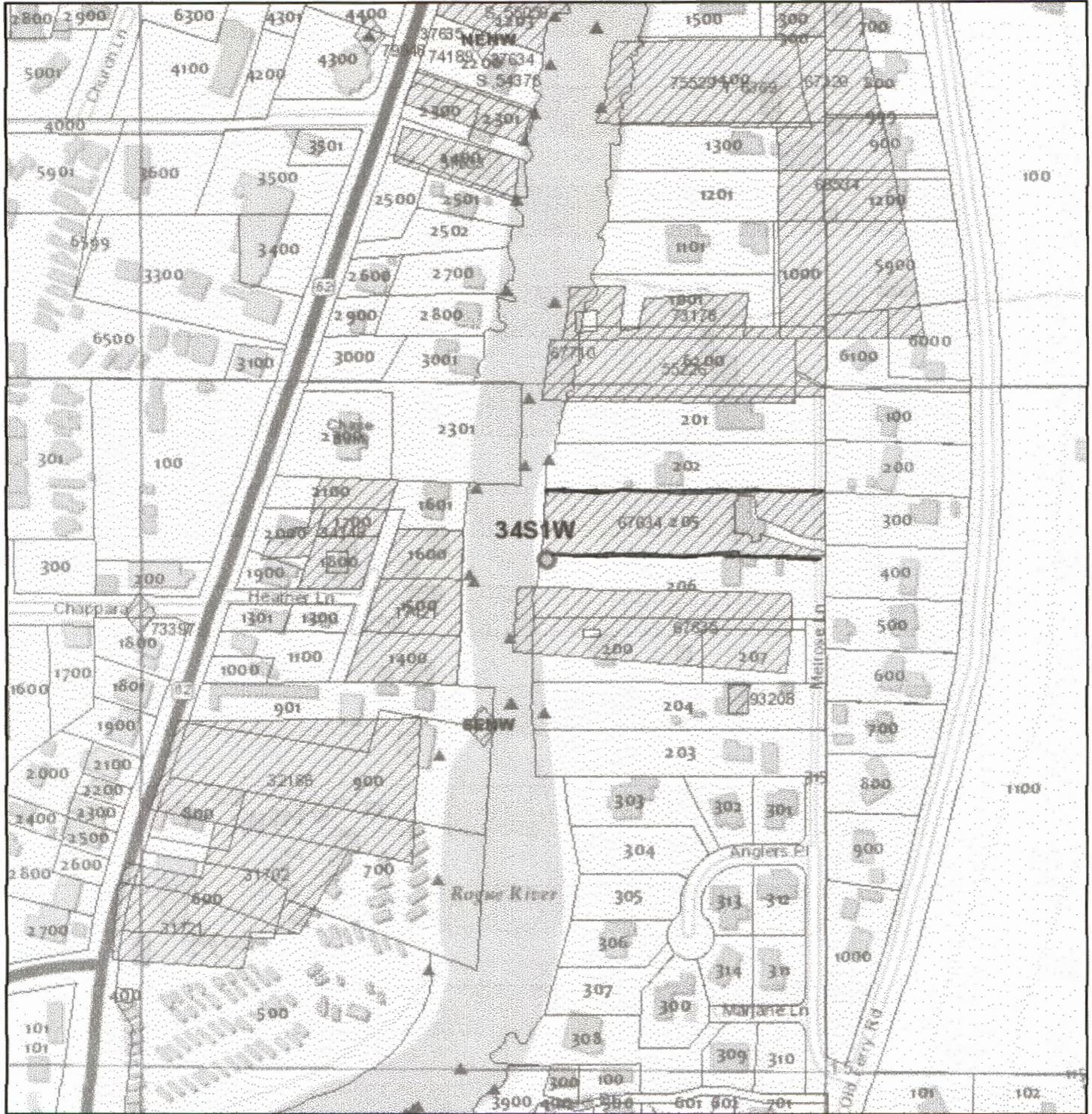
Oregon Water Rights Map

Printed: October 14, 2017

Oregon Water Resources Department

725 Summer St NE, Suite A, Salem, OR 97301

(503)986-0900



Water Rights by Type

- | | |
|---------------------|-----------------|
| Points of Diversion | Places of Use |
| * Storage Water | ▲ Surface Water |
| ▲ Groundwater | ▼ |

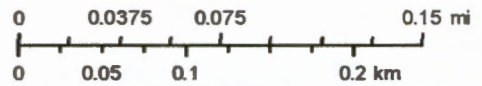
By Primary/Supplemental

- | | |
|-----------|----------------|
| * Primary | • Supplemental |
|-----------|----------------|

Water Rights by Use

- | | |
|-------------|------------|
| Recreation | Livestock |
| Fish | Irrigation |
| Wildlife | Mining |
| Instreams | Power |
| Misc. | Commercial |
| Agriculture | Domestic |

1:4,514



RECEIVED BY OWRD

OCT 30 2017

SALEM, OR