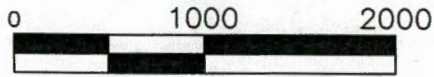


CARUZ



1 inch = 1000ft.

SURFACE WATER IRRIGATION APPLICATION

SECTION 8, T 1 N, R 2 W, W.M.
WASHINGTON COUNTY, OR

PREPARED FOR:
MOTZ FARM PROPERTIES LLC
11445 NW SKYLINE BLVD
PORTLAND, OR 97231

SALEM, OR

SALEM, OR

OCT 3 0 2017

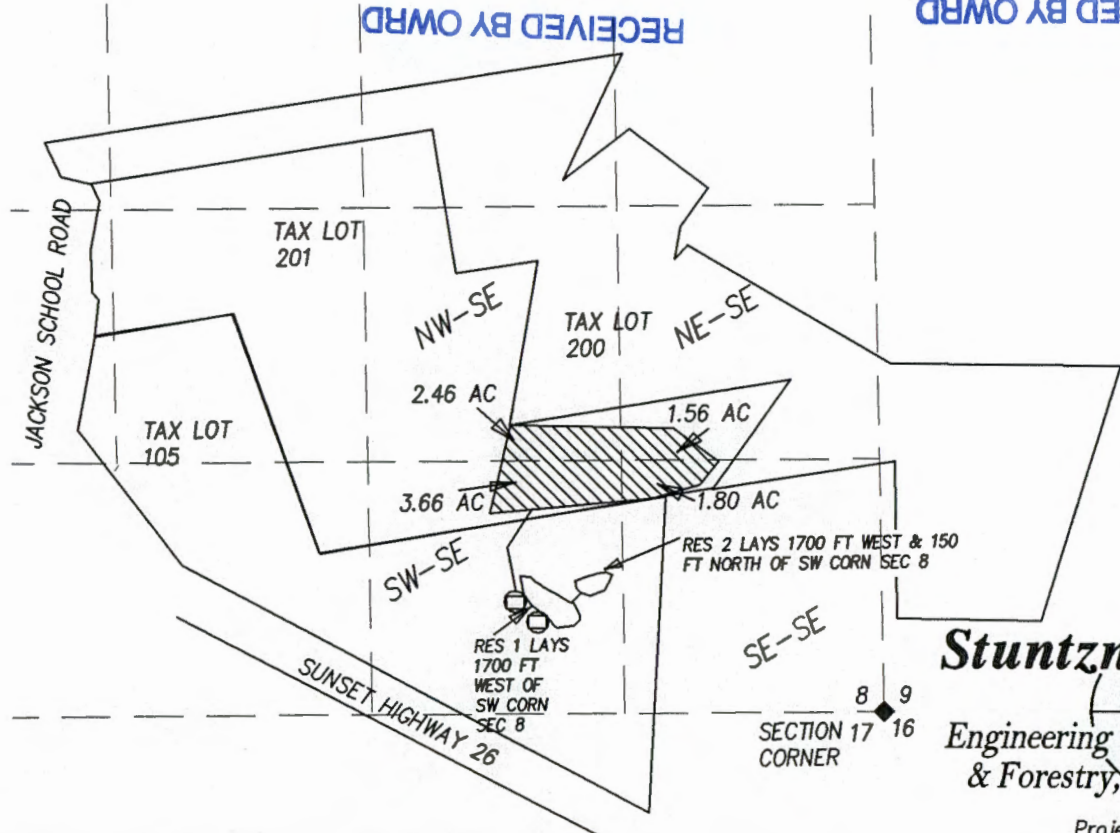
OCT 3 0 2017

RECEIVED BY OWRD

RECEIVED BY OWRD

LEGEND

- MAIN IRRIGATION PIPES
- APPROX. TAX LOT LINE
- 1/16TH SECTION LINE
- DLC LINE
- PLACE OF USE
- SECTION CORNER
- DITCH
- PTO PUMP



MAP BASES: WASHINGTON COUNTY TAX MAP T1N R2W SEC. 08
2016 AERIAL PHOTO FROM GOOGLE EARTH

THIS MAP WAS PREPARED FOR THE PURPOSE OF IDENTIFYING THE LOCATION OF A WATER RIGHT ONLY AND IS NOT INTENDED TO PROVIDE LEGAL DIMENSIONS OR LOCATION OF PROPERTY OWNERSHIP LINES.



Project: 312-049
By: Jeffrey Kee
Date: OCT 18, 2017
MAP: COBU_B