

RECEIVED

OCT 31 2017

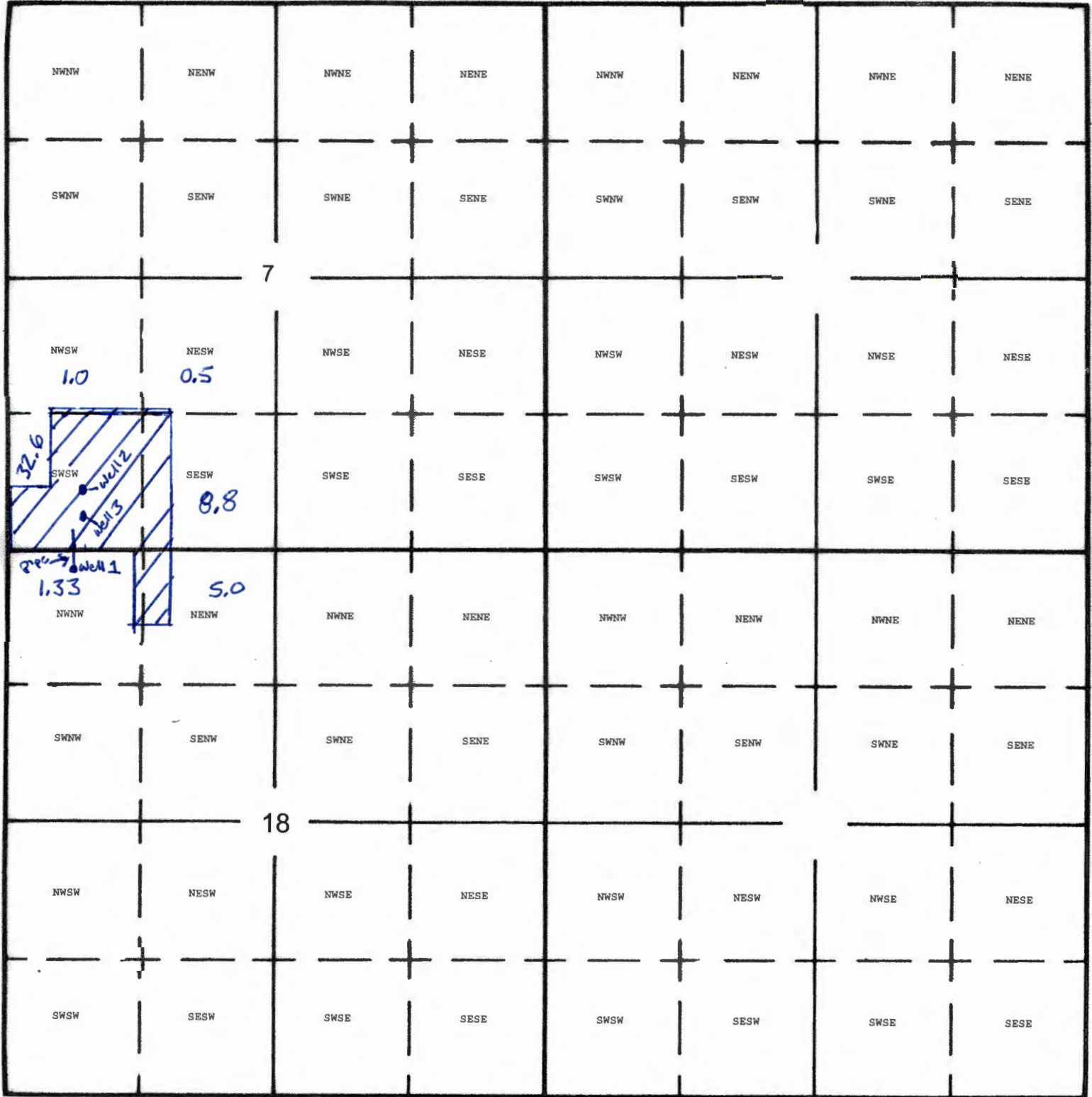


Sol-Sisters Inc.

1" = 1320'

Tax Lot:

Township 8 South, Range 4 West, Section 7, Tax Lot 202 & 502 & Section 18, Tax Lot 202 & 204



Well 1 (L-65554): 300 South and 937 East West from NW Corner Section 18, Latitude 44.88223 Longitude -123.23190  
 Well 2 (POLK 3227): 835 North and 1080 East from SW Corner Section 7, Latitude 44.88524 Longitude -123.23072  
 Well 3 (POLK 375): 540 North and 1080 East from SW Corner Section 7, Latitude 44.88446 Longitude -123.23100  
 Nursery Use on 49.23 Acres

*Deanna L. Hart 10-27-17*  
*Wendy S. 10/27/17*

IMPORTANT  
This Map for Assessment  
and Taxation Purposes  
ONLY

SEC. 7 T8S R4W WM  
POLK COUNTY

Scale 1" = 400'

See Map 8.4.6

8.4.7

Canceled No.

100  
101  
200

13-11

13-4

300  
187.98 AC

201  
18.29 AC

202  
15.88 AC

800  
30.95 AC

700  
30.95 AC

801  
78.82 AC

501  
25.00 AC

See Map 8.4.18

600  
28.85 AC

See Map 8.5.12

401  
1.94 AC

400  
120.73 AC

500  
14.81 AC

502  
20.00 AC

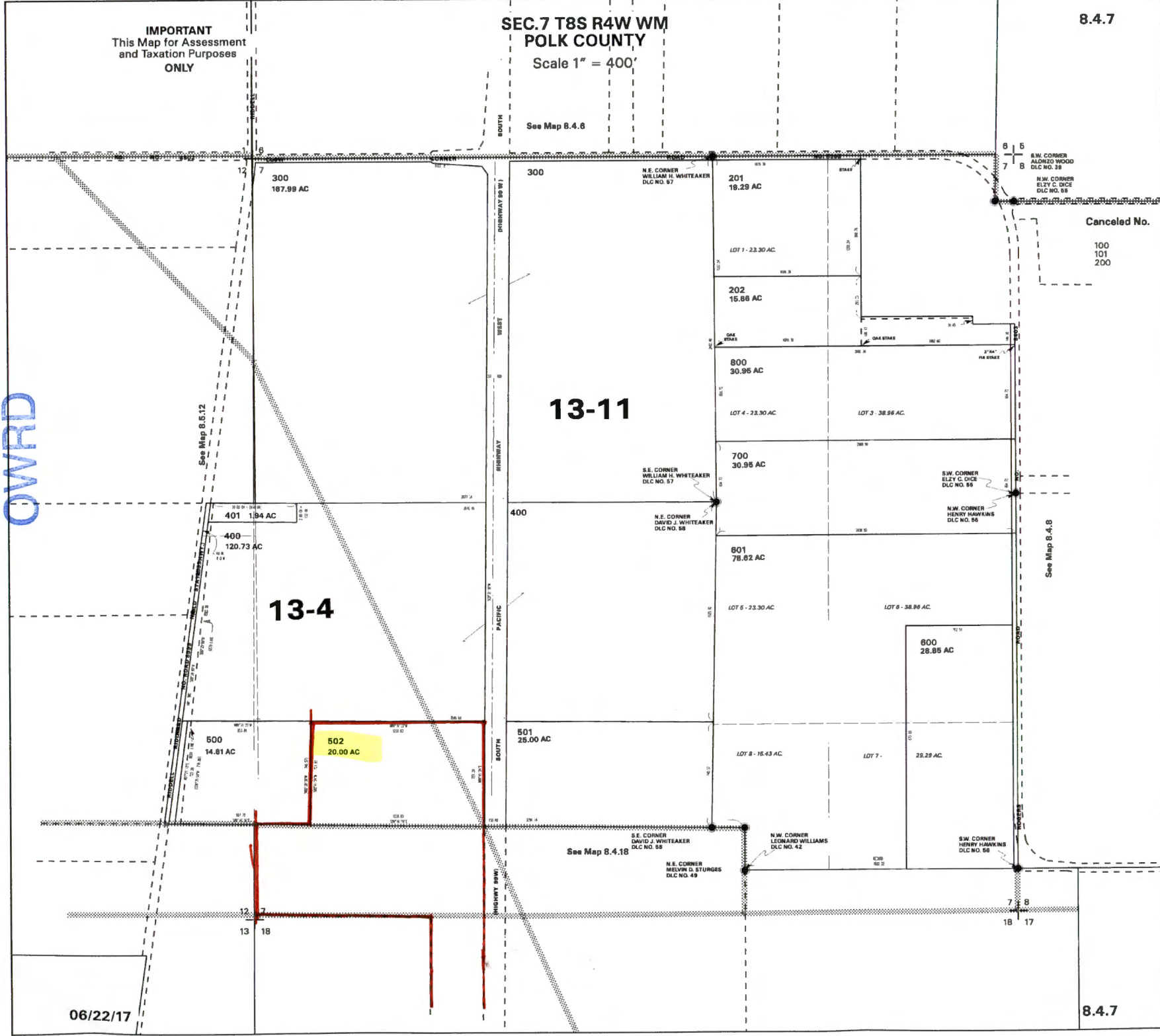
See Map 8.4.18

See Map 8.4.8

06/22/17

8.4.7

RECEIVED  
OCT 31 2017  
OWRD





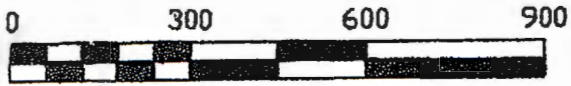
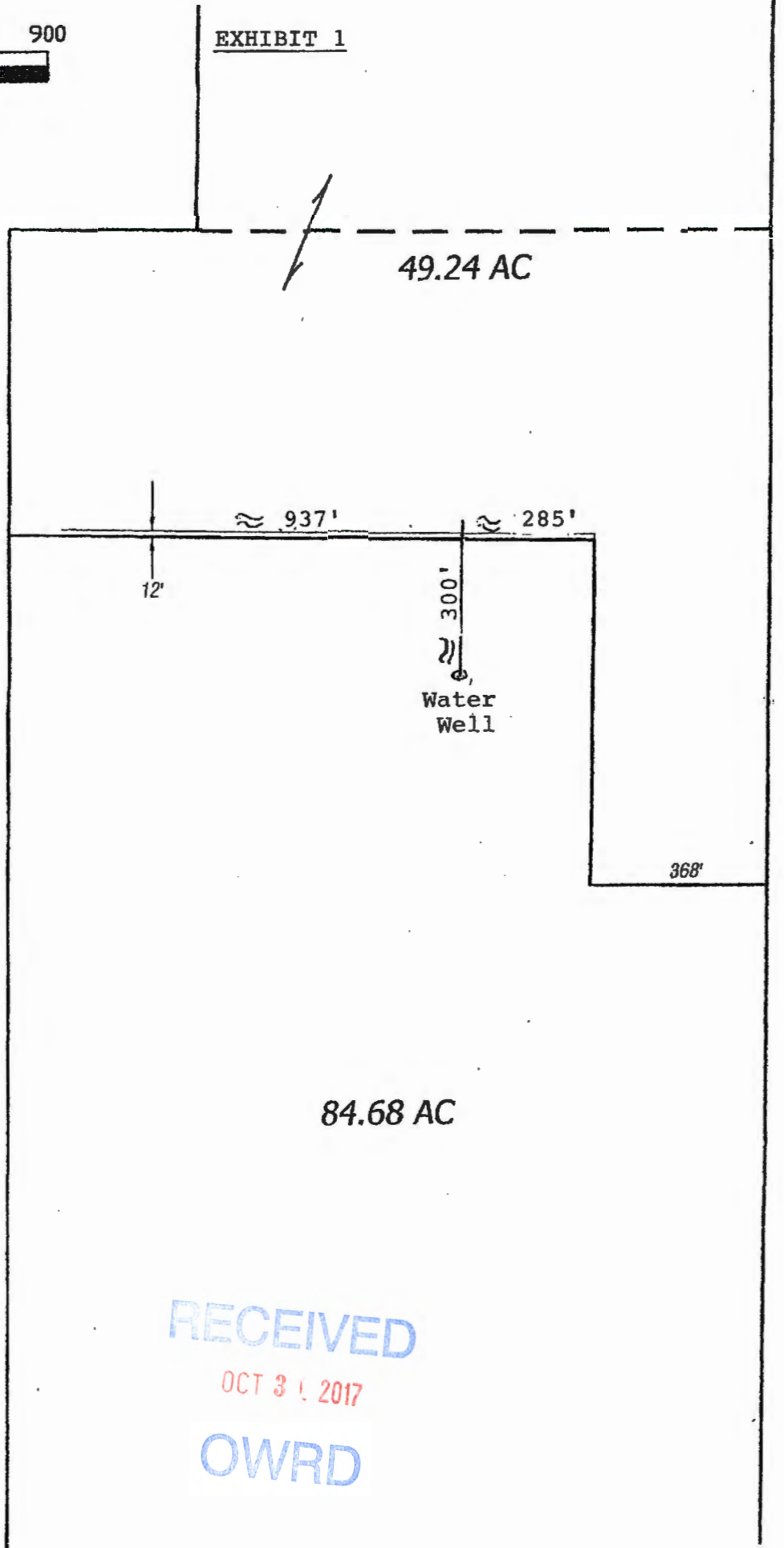


EXHIBIT 1



RECEIVED

OCT 31 2017

OWRD