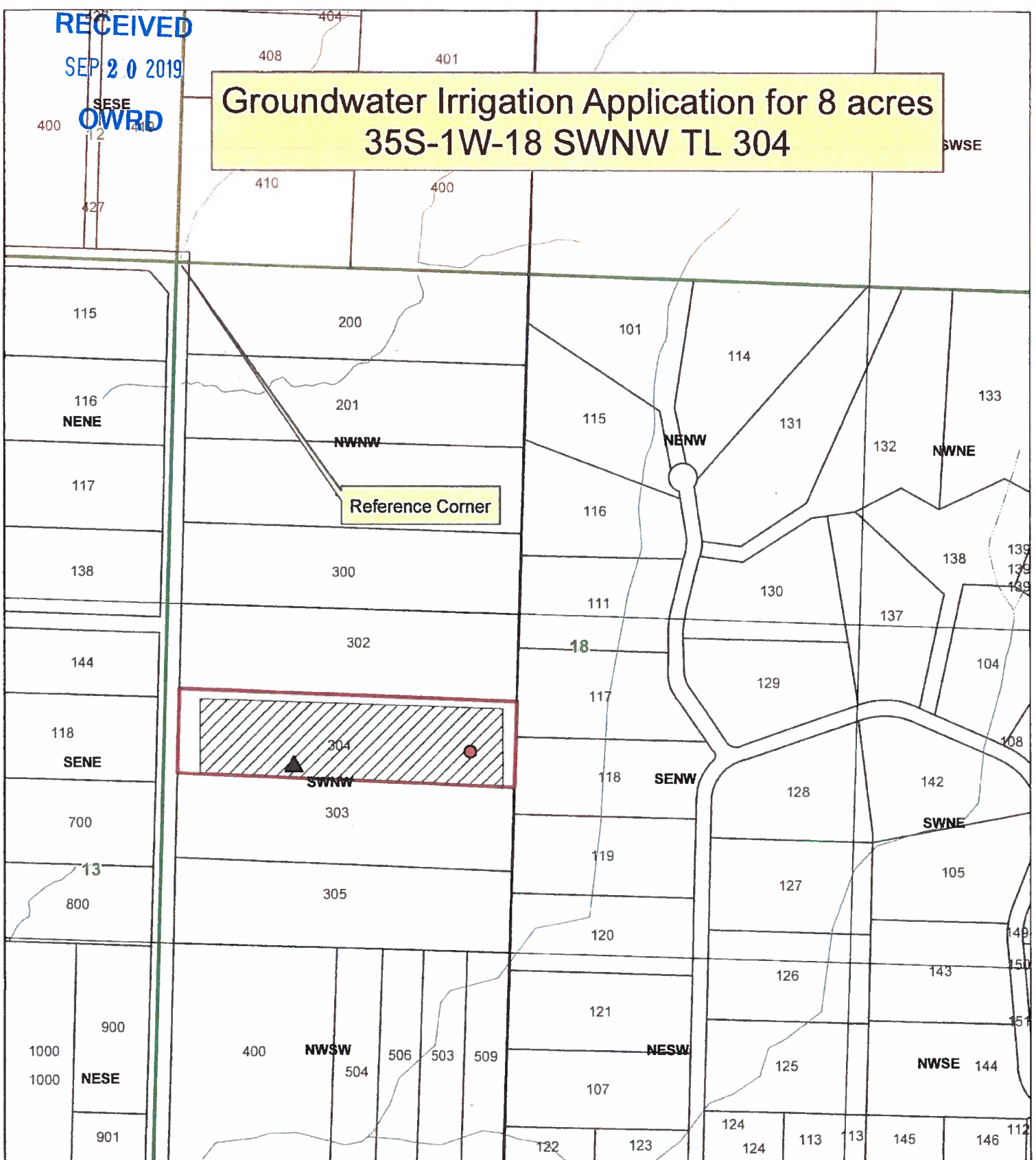


RECEIVED

SEP 20 2019

SESE
OWRD

Groundwater Irrigation Application for 8 acres 35S-1W-18 SWNW TL 304



Legend

- TL 304
- ▲ Well 1
- Well 2
- POU

Well 1: proposed
1930 ft South and
500 ft East from NW corner
Section 18

Well 2: proposed
1866 ft South and
1186 ft East from NW corner
Section 18



1 inch = 500 feet



JACKSON COUNTY

This map is based on a digital database compiled by Jackson County from a variety of sources. Jackson County cannot accept responsibility for errors, omissions, or positional accuracy. There are no warranties, expressed or implied.

Date: 09/18/2019: 35S-1W-18 SWNW TL 304 Jack R.mxd

G-18575