

This map was prepared for assessment purpose only.

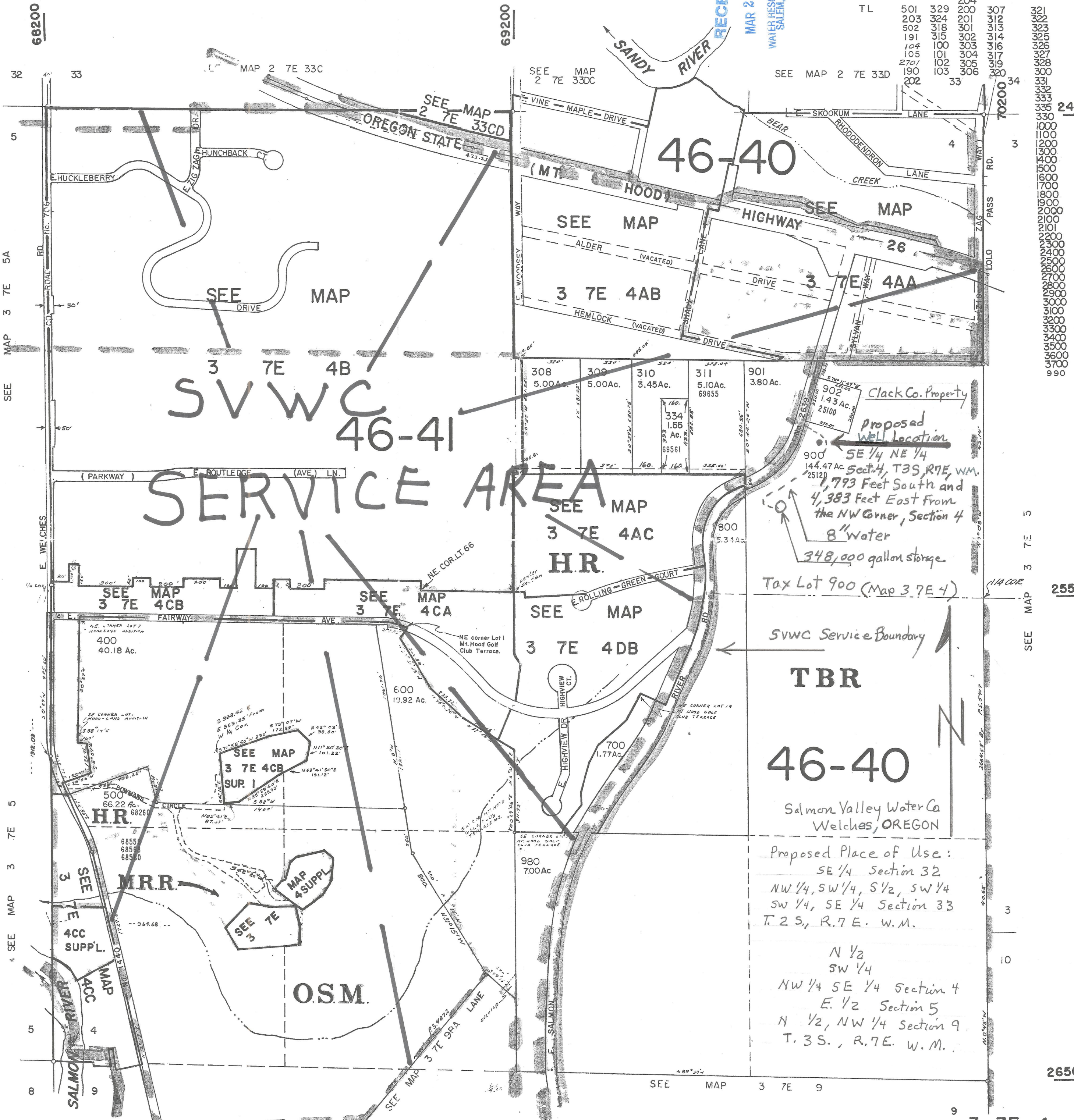
SECTION 4 T.3S. R.7E. W.M.
CLACKAMAS COUNTY

1" = 400'

3 7E 4
& INDEX

CANCELLED NOS.

TL	501	329	200	307
	203	324	201	312
	502	318	301	313
	191	315	302	314
	104	100	303	316
	105	101	304	327
	2701	102	305	328
	190	103	306	330
	202			331
				332
				333
				335
				336
				337
				338
				339
				340
				341
				342
				343
				344
				345
				346
				347
				348
				349
				350
				351
				352
				353
				354
				355
				356
				357
				358
				359
				360
				361
				362
				363
				364
				365
				366
				367
				368
				369
				370
				371
				372
				373
				374
				375
				376
				377
				378
				379
				380
				381
				382
				383
				384
				385
				386
				387
				388
				389
				390
				391
				392
				393
				394
				395
				396
				397
				398
				399
				400



Clack Co. Property
 Proposed Well Location
 SE 1/4 NE 1/4
 Sect. 4, T.3S, R.7E, W.M.
 793 Feet South and
 4,383 Feet East From
 the NW Corner, Section 4
 8" water
 348,000 gallon storage

Tax Lot 900 (Map 3 7E 4)

SVWC Service Boundary

TBR
46-40
 Salmon Valley Water Co
 Welches, OREGON

Proposed Place of Use:
 SE 1/4 Section 32
 NW 1/4, SW 1/4, S 1/2, SW 1/4
 SW 1/4, SE 1/4 Section 33
 T. 2 S., R. 7 E. W.M.

N 1/2
 SW 1/4
 NW 1/4 SE 1/4 Section 4
 E. 1/2 Section 5
 N 1/2, NW 1/4 Section 9
 T. 3 S., R. 7 E. W.M.

Application No. 915460
 Permit No.

3 7E 4
& INDEX
 BOOK 34