

This map was prepared for assessment purpose only.

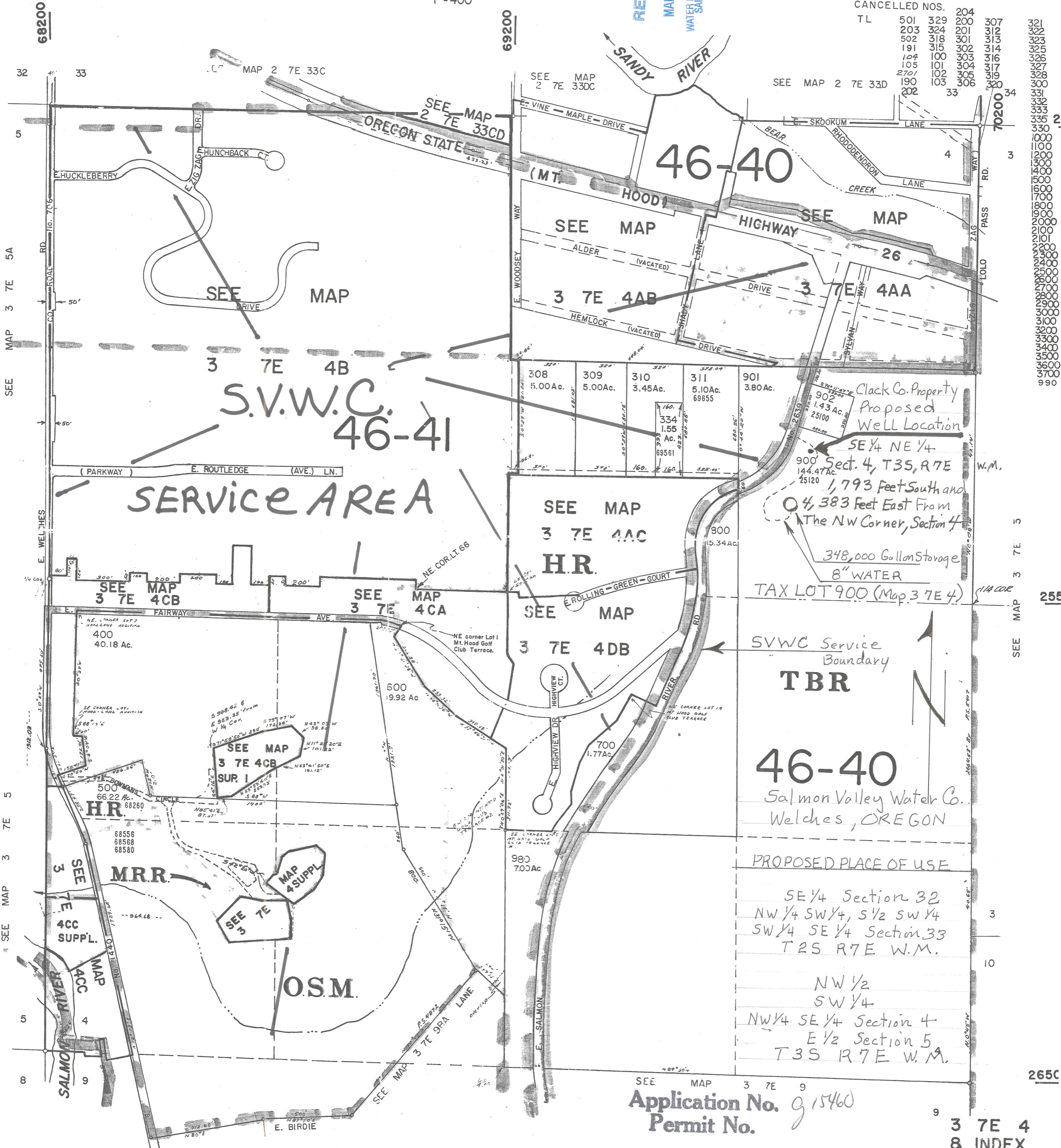
SECTION 4 T.3S. R.7E. W.M.  
CLACKAMAS COUNTY  
1" = 400'

3 7E 4  
& INDEX

RECEIVED  
MAR 27 2001  
WATER RESOURCES DEPT  
SALEM, OREGON

CANCELLED NOS.

TL	501	329	204	307
	203	324	201	312
	502	318	301	313
	191	315	302	314
	104	100	303	316
	105	101	304	317
	2701	102	305	319
	190	103	306	320
	202			33



Clack Co. Property  
Proposed  
Well Location  
SE 1/4 NE 1/4  
Sect. 4, T3S, R7E  
W.M.  
1,793 Feet South and  
4,383 Feet East From  
The NW Corner, Section 4  
348,000 Gallon Storage  
8" WATER  
TAX LOT 900 (Map 3 7E 4)

SVWC Service  
Boundary  
**TBR**  
**46-40**  
Salmon Valley Water Co.  
Welches, OREGON

PROPOSED PLACE OF USE  
SE 1/4 Section 32  
NW 1/4 SW 1/4, S 1/2 SW 1/4  
SW 1/4 SE 1/4 Section 33  
T2S R7E W.M.  
NW 1/2  
SW 1/4  
NW 1/4 SE 1/4 Section 4  
E 1/2 Section 5  
T3S R7E W.M.

Application No. 915460  
Permit No.

3 7E 4  
& INDEX  
BOOK 34 MAR 06 2001