

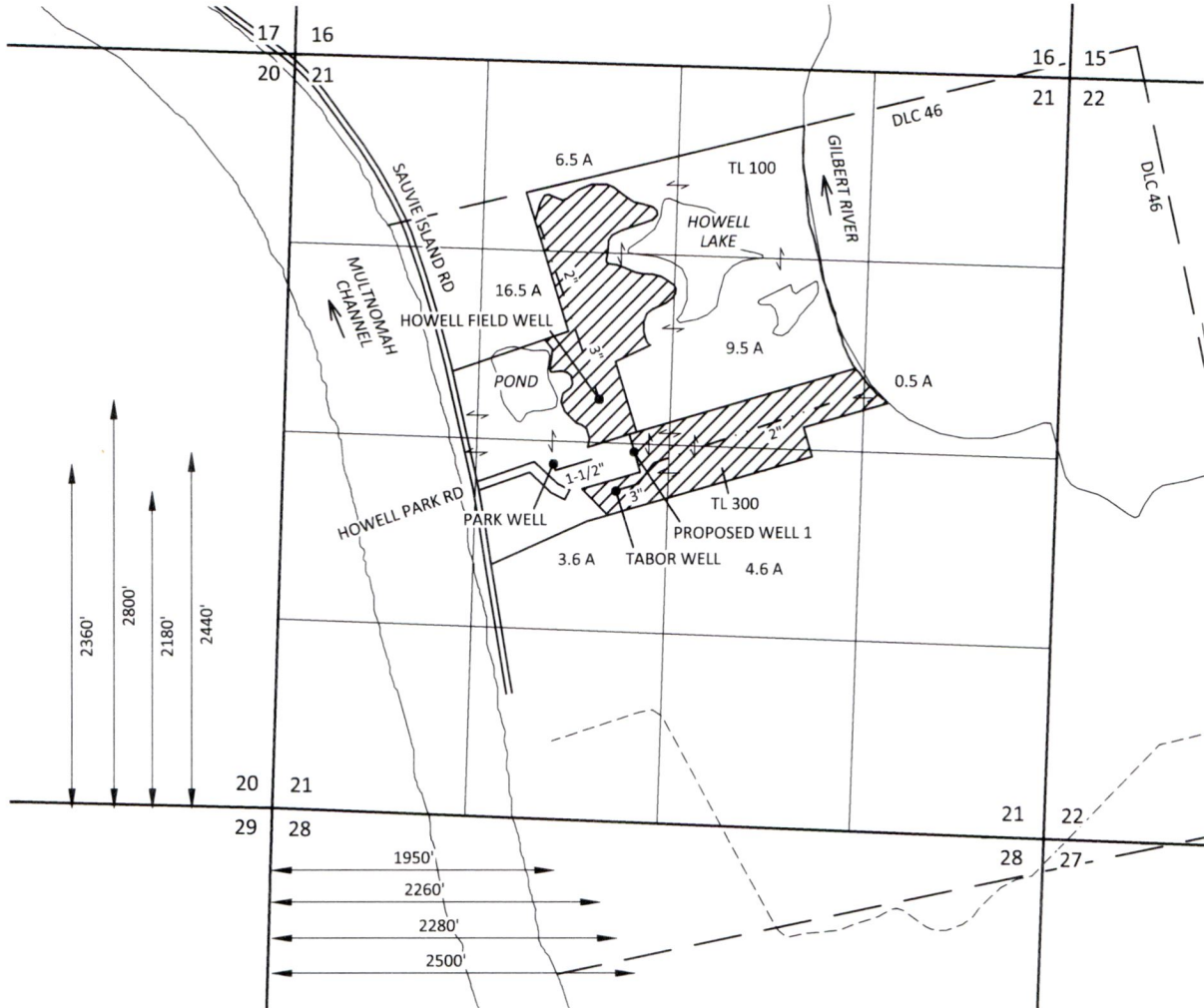
Section 21, T2N, R1W, W.M.,  
Multnomah County, Oregon

RECEIVED BY OWRD

DEC 07 2017




GROUNDWATER APPLICATION MAP  
Metro Regional Government

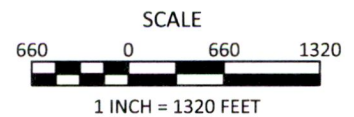
SALEM, OR



Note: There are primary irrigation rights on Tax Lot 300 held by the Savie Island Drainage Improvement District under Certificate 49880. The District has agreed to diminish these rights to supplemental irrigation if a permit is issued (see application documents).

EXPLANATION

-  PROPOSED PLACE OF USE  
41.2 ACRES
-  WELL
-  PIPE



November 7, 2017

This map is not intended to provide legal dimensions or locations of property ownership lines

Figure 1

**SKOOKUM**  
WATER ASSOCIATES INC

1626 VICTORIAN WAY  
EUGENE, OR 97401  
(503) 319-8926

G-18,589