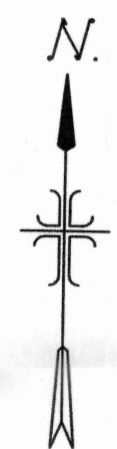
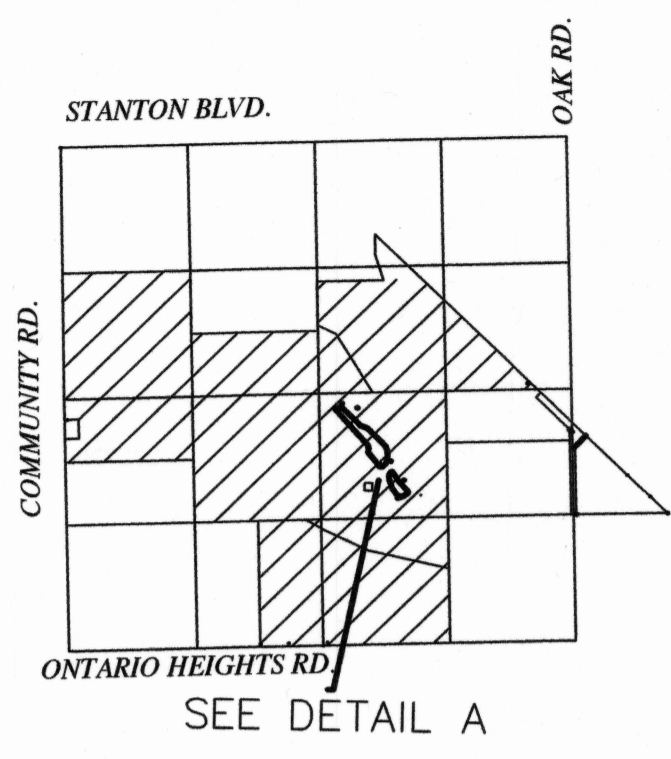



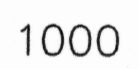

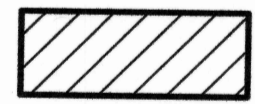

9-28-17

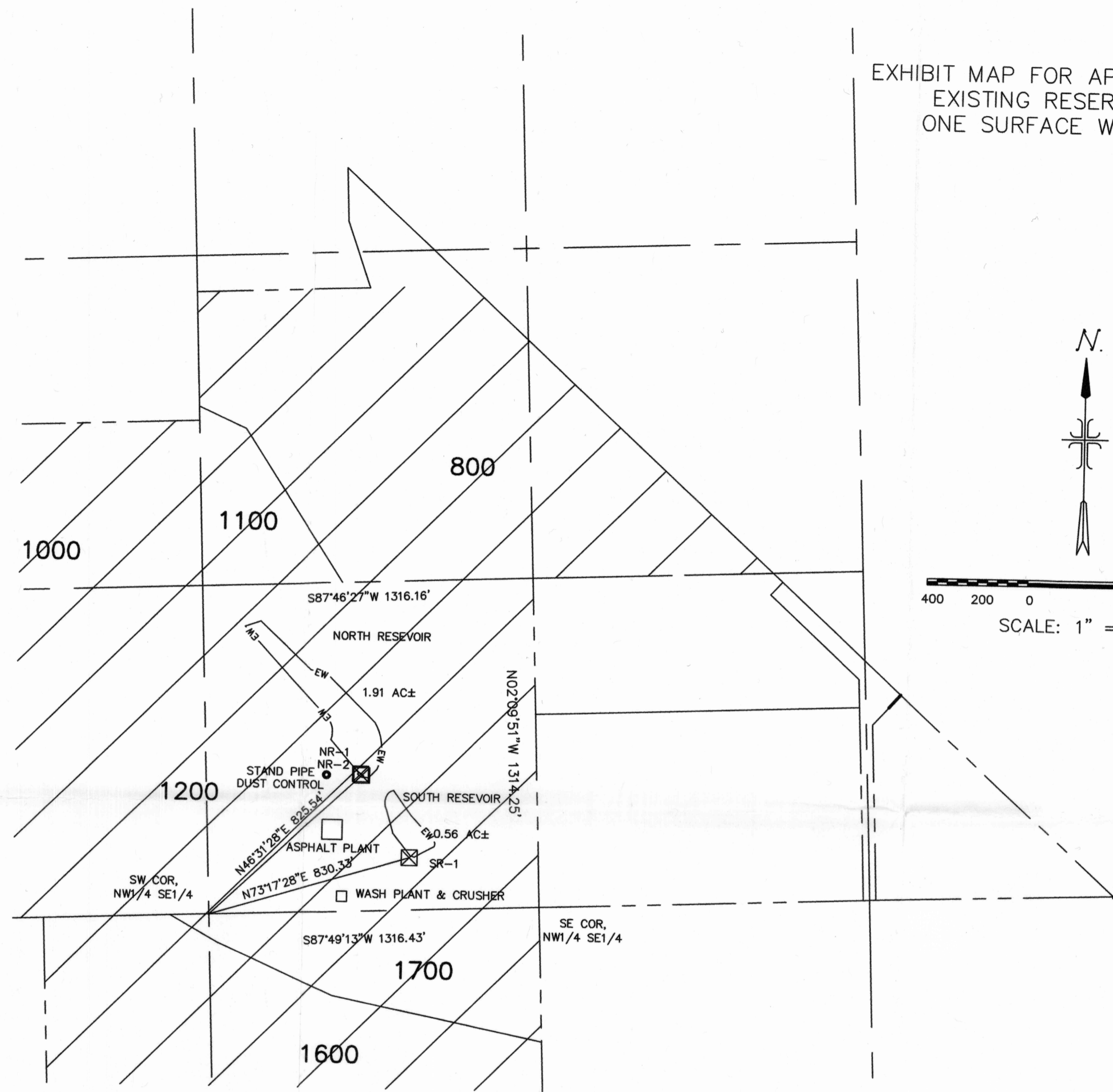
EXHIBIT MAP FOR APPLICATIONS FOR EXISTING RESERVOIRS AND ONE SURFACE WATER RIGHT



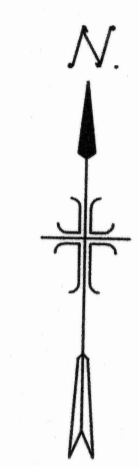
1320 600 0 1320 2640
SCALE: 1" = 1320'

LEGEND

-  Place of use for dust control
-  Tax Lot Numbers
-  Pump Location with Hour Meters
-  Place of Use
-  Edge of Water



DETAIL A



400 200 0 400 800
SCALE: 1" = 400'

NOTE:
THIS MAP IS FOR THE PURPOSE OF IDENTIFYING THE LOCATION OF WATER RIGHTS ONLY AND IS NOT INTENDED TO PROVIDE LEGAL DIMENSIONS OF PROPERTY LINES. TIES TO SW CORNER OF THE NW1/4 SE1/4 FOR PUMP NR-1, NR-2 AND SR-1 ARE ALSO TIES TO RESERVOIR DAMS. PUMPS ARE LOCATED AT THE WESTERLY CORNERS OF RESERVOIRS AT DAM.

NOTE:
HOUR METERS ARE LOCATED AT THE PUMPS, IN ELECTRICAL PANELS. A FLOW METER IS LOCATED AT THE ASPHALT PLANT.

EXHIBIT MAP FOR WATER RIGHTS LYING IN A PORTION OF SECTION 19, TOWNSHIP 17 S, RANGE 47 EAST, OF THE WILLAMETTE MERIDIAN, MALHEUR COUNTY, OREGON


RECEIVED
JAN 12 2018
OWRD

RECEIVED
JAN 11 2018
OWRD

WATER RIGHTS EXHIBIT MAP
SEUBERT EXCAVATORS, INC.

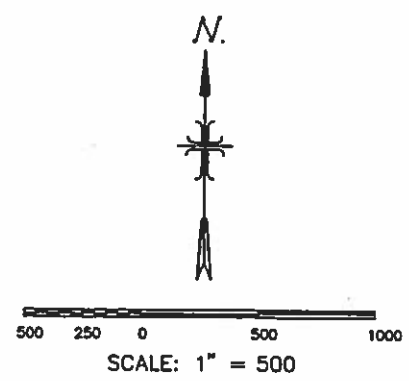
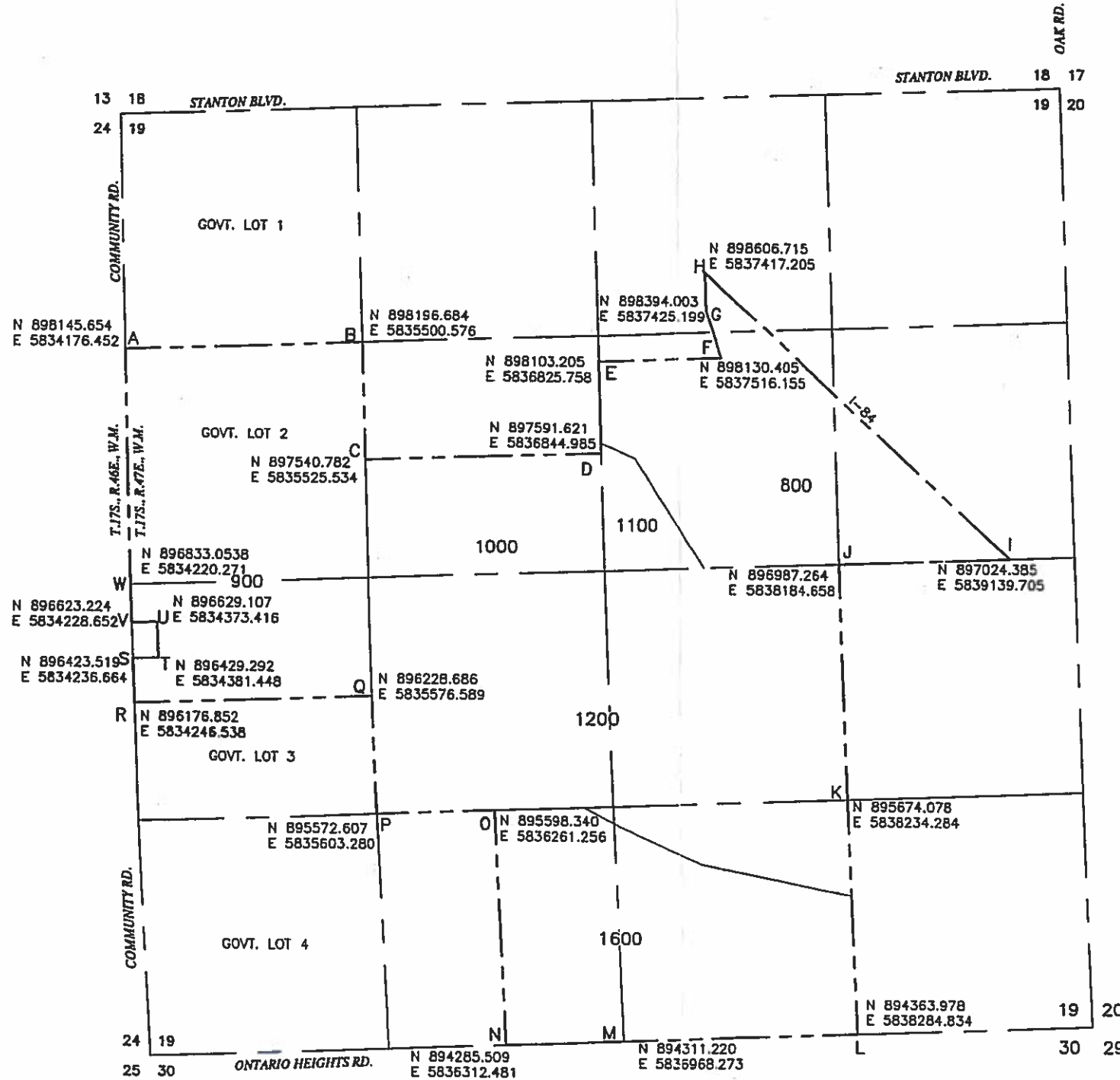
A PORTION OF THE NW1/4 OF SE1/4
OF SECTION 19,
T. 17 S., R. 47 E.,
W.M., MALHEUR COUNTY, OREGON

REVISED 12-12-17	DR: SPS	CK: MH	SHEET: 1 OF 1
DATE: December 12, 2017		FILE: 7504-03 WATER RIGHTS EXHIBIT 121217.dwg	



DAVID EVANS AND ASSOCIATES INC.
9925 EMERALD ST
BOISE, ID
PHONE: 208-585-5858

R-88496



THE COORDINATES SHOWN HEREON, ARE NAD 83, STATE PLANE GRID COORDINATES, U.S. SURVEY FEET. IN ORDER TO ACHIEVE MODIFIED GROUND COORDINATES, APPLY A COMBINED SCALE FACTOR OF 0.999902618426.

COORDINATE TABLE		
POINT	LATITUDE	LONGITUDE
A	N44.079000	W117.025148
B	N44.078989	W117.010105
C	N44.077189	W117.020114
D	N44.077178	W117.015090
E	N44.078582	W117.015082
F	N44.078578	W117.012453
G	N44.079311	W117.012758
H	N44.079895	W117.012754
I	N44.075361	W117.006456
J	N44.075368	W117.010093
K	N44.071764	W117.010113
L	N44.068167	W117.010128
M	N44.068173	W117.015141
N	N44.068177	W117.017638
O	N44.071781	W117.017625
P	N44.071786	W117.020130
Q	N44.073587	W117.020128
R	N44.073596	W117.025193
S	N44.074274	W117.025191
T	N44.074273	W117.024640
U	N44.074821	W117.024639
V	N44.074822	W117.025190
W	N44.075398	W117.025189

REGISTERED PROFESSIONAL LAND SURVEYOR
Walter L. Neitz 5/26/14
 OREGON
 JULY 11, 1989
 WALTER L. NEITZ
 813
 LIC. EXP. 12/31/14

DOGAMI ID NO. 23-0015, PERMIT BOUNDARY MAP

NARRATIVE:
 THE PURPOSE OF THIS MAP IS TO SHOW THE CURRENT PERMIT BOUNDARY OF TAX LOTS 900, 1000, 1100, 800, 1200 AND 1600.

BASIS OF BEARING:
 OREGON STATE PLANE COORDINATE SYSTEM
 NAD 1983, SOUTH ZONE (3602)

PREPARED FOR:
 SEUBERT EXCAVATORS, INC.
 DOGAMI ID NO. 23-0015, Canyon No. 1

DOGAMI PERMIT BOUNDARY EXHIBIT MAP FOR
SEUBERT EXCAVATORS, INC.

GOVERNMENT LOT 2, THE SOUTH 1/2 OF THE SE1/4SW1/4, A PORTION OF THE NW1/4SW1/4, A PORTION OF THE SW1/4SW1/4, A PORTION OF THE SW1/4SW1/4, THE NW1/4SE1/4, THE SW1/4SE1/4, THE EAST 1/2 OF THE SE1/4SW1/4, THE NE1/4SW1/4, AND A PORTION OF THE NORTH 1/2 OF GOVERNMENT LOT 3, OF SECTION 18, T. 17 S., R. 47 E., W.M., WALLOWA COUNTY, OREGON

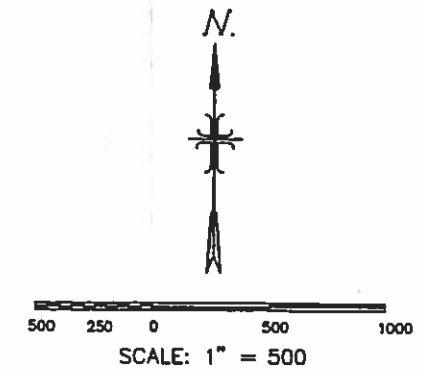
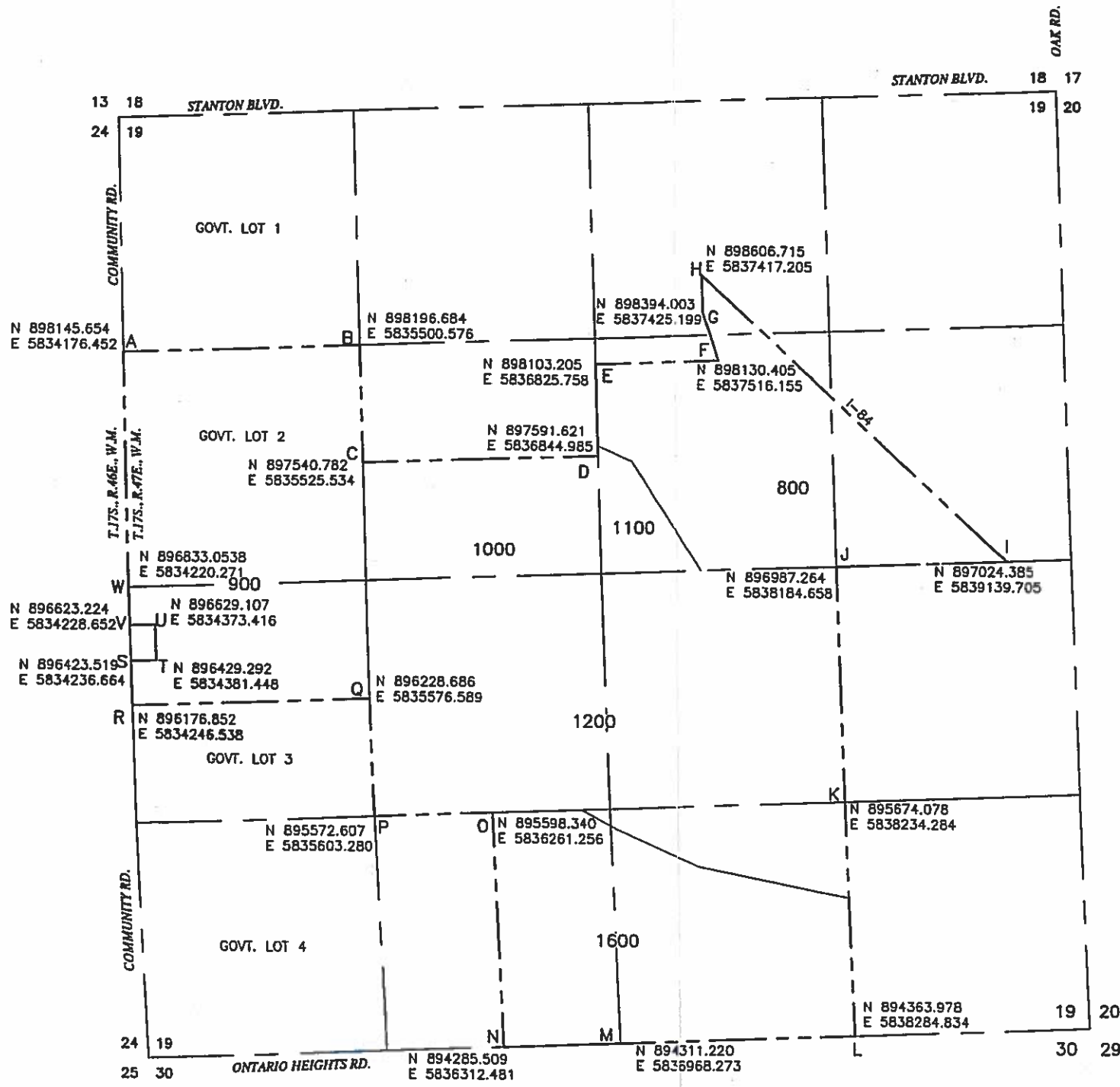
SCALE: 1" = 500' DR: SPS CK: WLN SHEET: 1 OF 1
 DATE: May 28, 2014 FILE: 7594-02 ONTARIO PERMIT BOUNDARY GRID.dwg

ALS Surveyors • Planners
 1103 West Main Street
 Middleton, Idaho
 208-585-5858

RECEIVED
 JAN 12 2018
 OWRD

RECEIVED
 JAN 11 2018
 OWRD

R-88496



THE COORDINATES SHOWN HEREON, ARE NAD 83, STATE PLANE GRID COORDINATES, U.S. SURVEY FEET. IN ORDER TO ACHIEVE MODIFIED GROUND COORDINATES, APPLY A COMBINED SCALE FACTOR OF 0.999902618426.

COORDINATE TABLE		
POINT	LATITUDE	LONGITUDE
A	N44.079000	W117.025148
B	N44.078989	W117.010105
C	N44.077189	W117.020114
D	N44.077178	W117.015090
E	N44.078582	W117.015082
F	N44.078578	W117.012453
G	N44.079311	W117.012758
H	N44.079895	W117.012754
I	N44.075361	W117.008456
J	N44.075368	W117.010093
K	N44.071764	W117.010113
L	N44.068167	W117.010128
M	N44.068173	W117.015141
N	N44.068177	W117.017638
O	N44.071781	W117.017625
P	N44.071786	W117.020130
Q	N44.073587	W117.020128
R	N44.073596	W117.025193
S	N44.074274	W117.025191
T	N44.074273	W117.024640
U	N44.074821	W117.024639
V	N44.074822	W117.025190
W	N44.075398	W117.025189

REGISTERED PROFESSIONAL LAND SURVEYOR
Walter L. Neitz 5/28/14
 OREGON
 JULY 11, 1980
 WALTER L. NEITZ
 913
 LC. DP. 12/31/14

DOGAMI ID NO. 23-0015, PERMIT BOUNDARY MAP

NARRATIVE:
 THE PURPOSE OF THIS MAP IS TO SHOW THE CURRENT PERMIT BOUNDARY OF TAX LOTS 900, 1000, 1100, 800, 1200 AND 1600.

BASIS OF BEARING:
 OREGON STATE PLANE COORDINATE SYSTEM
 NAD 1983, SOUTH ZONE (3602)

PREPARED FOR:
 SEUBERT EXCAVATORS, INC.
 DOGAMI ID NO. 23-0015, Canyon No. 1

DOGAMI PERMIT BOUNDARY EXHIBIT MAP FOR
SEUBERT EXCAVATORS, INC.

GOVERNMENT LOT 2, THE SOUTH 1/2 OF THE SE1/4SW1/4, A PORTION OF THE NW1/4SW1/4, A PORTION OF THE SW1/4SW1/4, A PORTION OF THE SE1/4SW1/4, THE NW1/4SW1/4, THE SW1/4SW1/4, THE EAST 1/2 OF THE SE1/4SW1/4, THE NE1/4SW1/4, AND A PORTION OF THE NORTH 1/2 OF GOVERNMENT LOT 3, OF SECTION 18, T. 17 S., R. 47 E., W.M., MALHEUR COUNTY, OREGON

SCALE: 1" = 500' DR: SPS CK: WLN SHEET: 1 OF 1
 DATE: May 28, 2014 FILE: 754-02 ONTARIO PERMIT BOUNDARY GRID.dwg

ALS
 Surveyors • Planners
 1103 West Main Street
 Middleton, Idaho
 208-585-5858

RECEIVED
 JAN 12 2018
 OWRD

RECEIVED
 JAN 1 1 2018
 OWRD

R-88496

RECEIVED

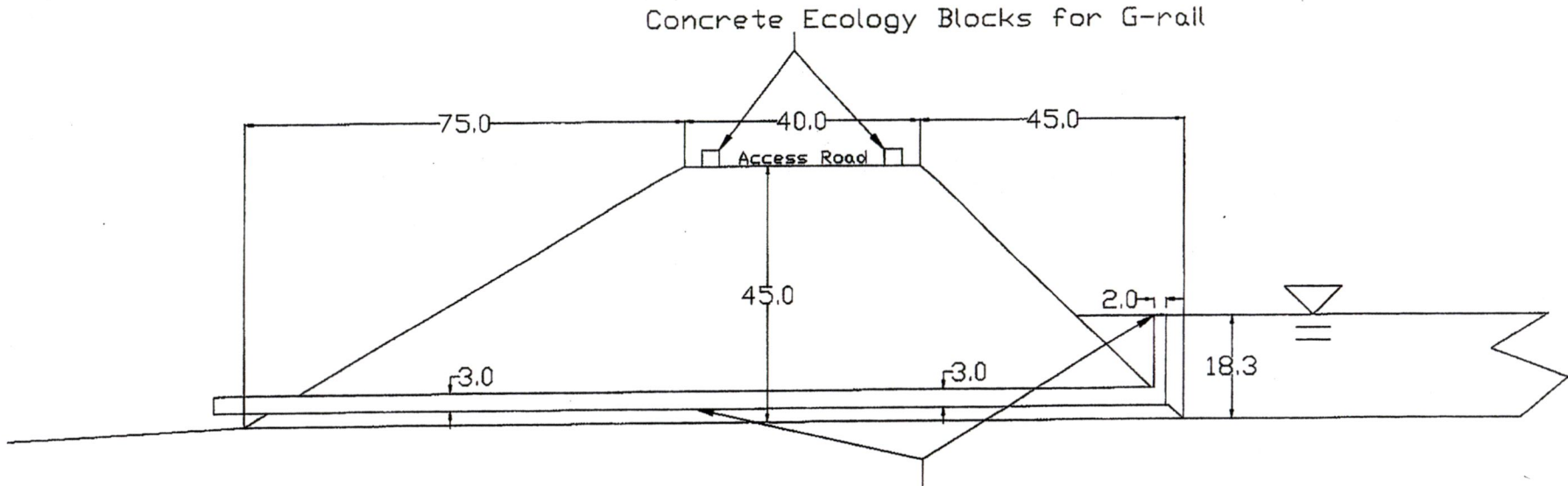
JAN 12 2018

OWHD

RECEIVED

JAN 11 2018

OWRD

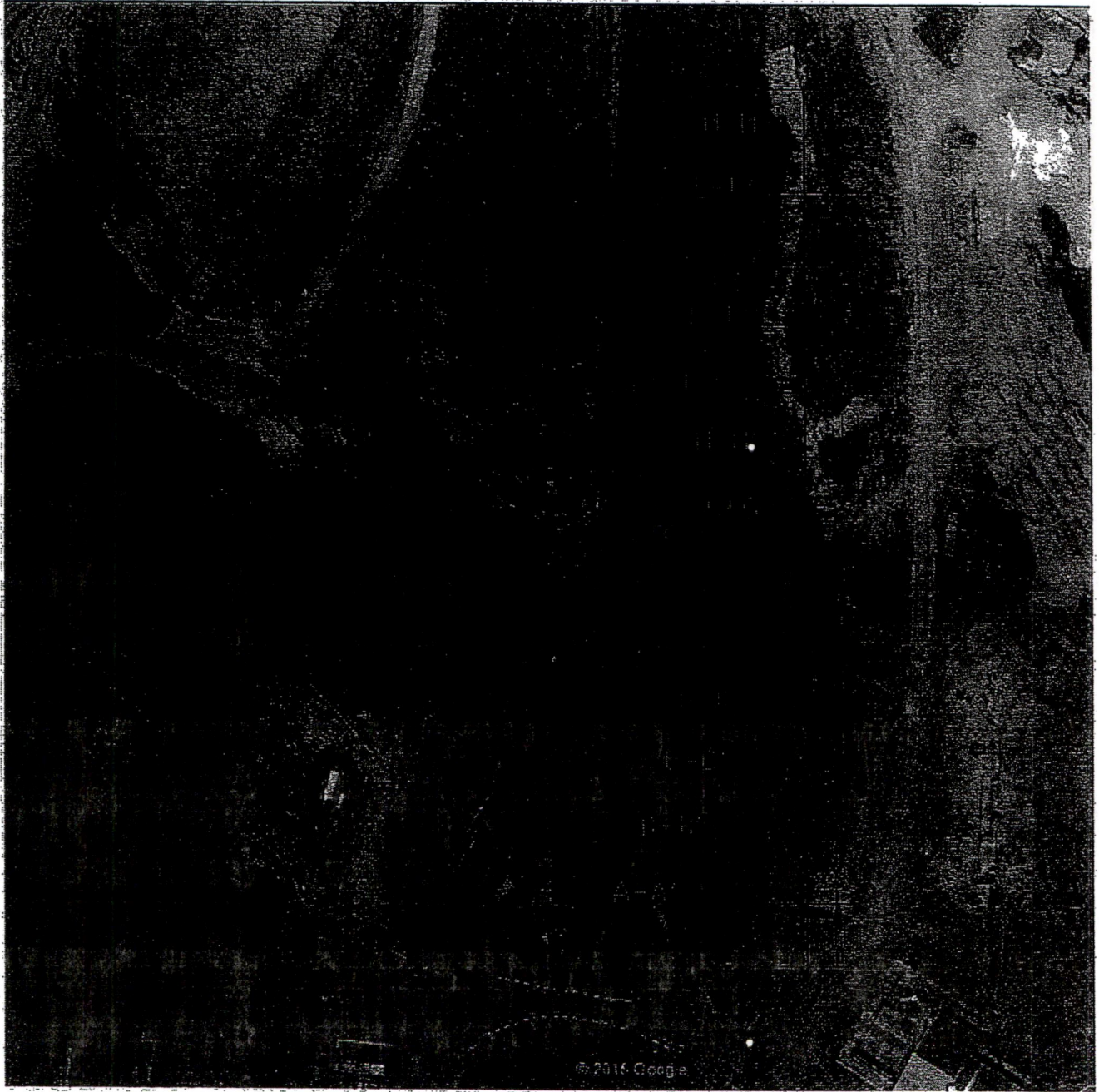


2' Corrugated Steel Pipe w/ Screen
for outlet protection verticle and 3'
dlameter horizontal culvert pipe

NORTH RESERVOIR

R-80496

Pond at Canyon #1 Quarry



RECEIVED
JAN 12 2018
OWRD

RECEIVED
JAN 11 2018
OWRD

12-88496