

RECEIVED  
 JAN 16 2018  
 OWRD

**1 RESERVOIR LOCATION MAP**

1" = 1000'



RESERVOIR REFERENCE LOCATION AT THE SPILLWAY

RESERVOIR LOCATION 1154 FT EAST AND 3264 FT NORTH OF THE SW CORNER OF SECTION 22, T. 15S., R. 09W.

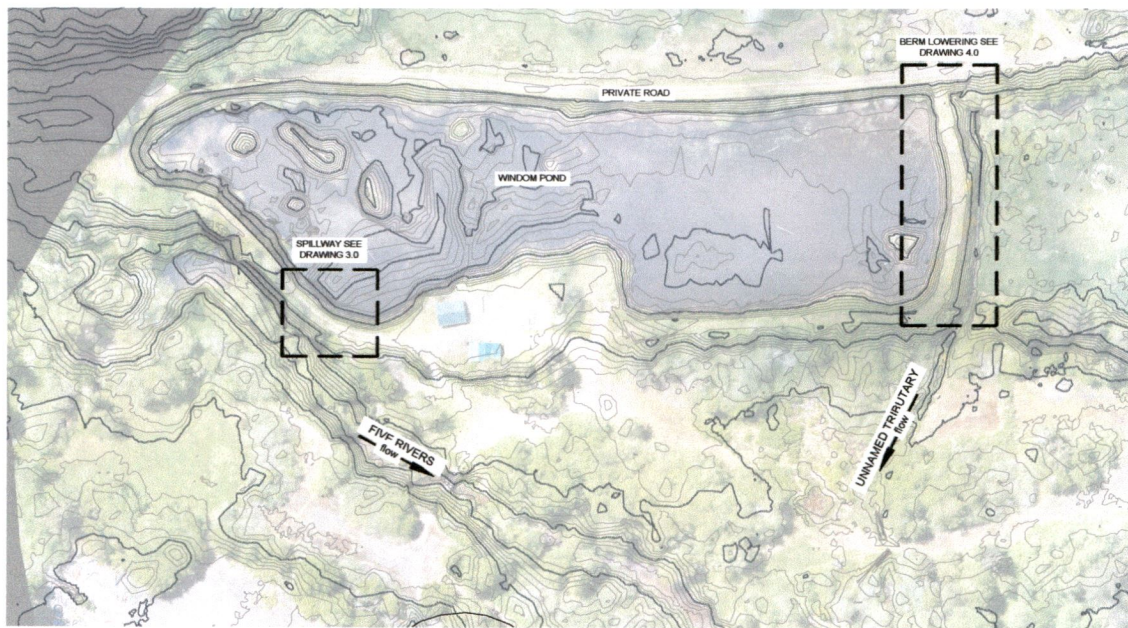
M:\Projects\2017\RDG-17-046 Windom Pond\CAD\Windom Pond Reservoir Location.dwg

PROJECT NUMBER	NO.	DATE	BY	DESCRIPTION	CHK
RDG-17-046	*	08/25/17	DF	ISSUED FOR PERMITS	CS
EXHIBIT					
<b>A</b>					

**RESERVOIR LOCATION MAP**  
 WINDOM POND IMPROVEMENT PROJECT  
 FISHER, OREGON



R-88500



**1 SITE OVERVIEW**

1" = 60'



RDG  
 311 GARDNER AVENUE  
 CONCORD, MA 01735  
 508 366 4677

**SITE OVERVIEW**

WINDOM POND IMPROVEMENT PROJECT  
 FISHER, OR

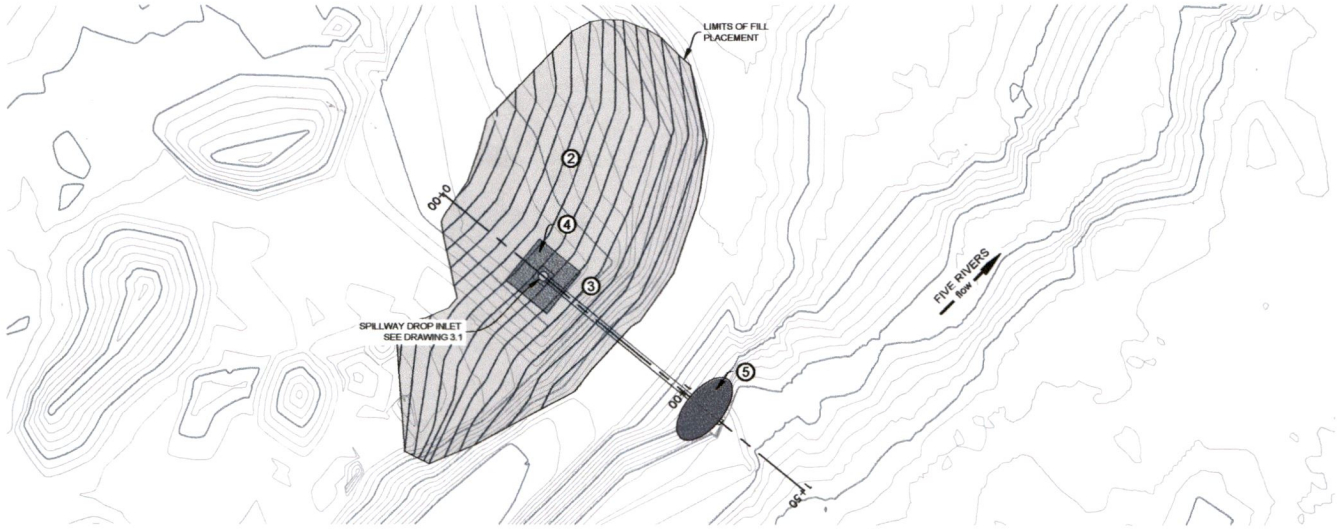
NO.	DATE	BY	DESCRIPTION	CHK
1	12/27/17	DF	DRAFT	CS
PROJECT NUMBER				RDG-17-046
DRAWING NUMBER				2.0
Drawing 2 of 6				

**DRAFT**

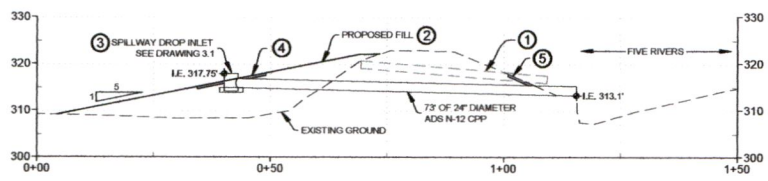
RECEIVED  
 JAN 16 2018  
 OWRD

R-8850

NO.	DATE	BY	DESCRIPTION	CHK	CS
1	12/6/17	DF	DRAFT		
PROJECT NUMBER RDS-12-046					
DRAWING NUMBER <b>3.0</b>					
Drawing 3 of 8					



**1 SPILLWAY PLAN**  
 1" = 30'



**2 SPILLWAY PROFILE**  
 HORIZ 1" = 20'  
 VERT 1" = 20'

- CONSTRUCTION NOTES**
- 1 REMOVE EXISTING PIPE AND RETAIN FOR LANDOWNER
  - 2 PLACE FILL ON INSIDE SLOPE OF BERM, LINES AND GRADES THIS SHEET, ESTIMATED QUANTITY 830 CY.
  - 3 PLACE DROP INLET SPILLWAY TO LINES AND GRADES THIS SHEET AND DWG 3.1
  - 4 INLET PROTECTION - PLACE 6" THICKNESS OF 3" MINUS CRUSHED ROCK, 6' EACH DIRECTION FROM DROP INLET
  - 5 OUTLET PROTECTION - PLACE 12 CY ODOT CLASS 200 ROCK AROUND PIPE AT OUTLET.

**DRAFT**

RECEIVED

JAN 16 2018

OWRD

R-88500





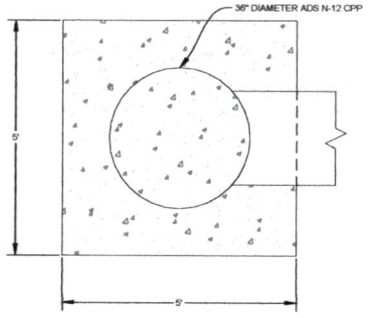
**SPILLWAY DROP INLET DETAIL**  
 WINDOM POND IMPROVEMENT PROJECT  
 FISHER, OR

NO.	DATE	BY	DESCRIPTION	CHK
1	12/01/17	DF	DRAFT	CE

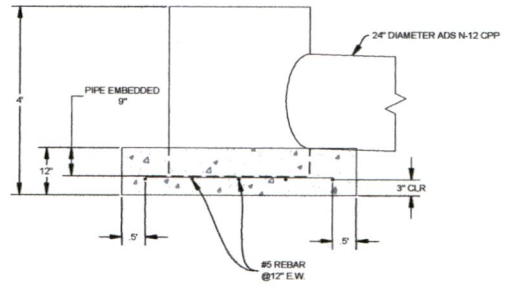
PROJECT NUMBER: RDG-17-046  
 DRAWING NUMBER: 3.1  
 Drawing 4 of 6

**CONSTRUCTION NOTES**

1. CONSTRUCT DROP INLET BASE FROM REINFORCED CONCRETE, CAST AGAINST EARTH. DIMENSIONS THIS PAGE. PLACE #5 BARS @ 12" EACH WAY IN SLAB. SPILLWAY BASE IS TO PREVENT THE SPILLWAY FROM FLOATING.
2. JOIN 2" DIAMETER PIPE TO 36" DIAMETER PIPE USING COUPLER OR CUSTOM FABRICATION. IF CUSTOM FABRICATION IS USED, ENCASE JOINT IN CONCRETE.



**1 DROP INLET TOP**  
 1" = 2'



**2 DROP INLET SIDE**  
 1" = 2'

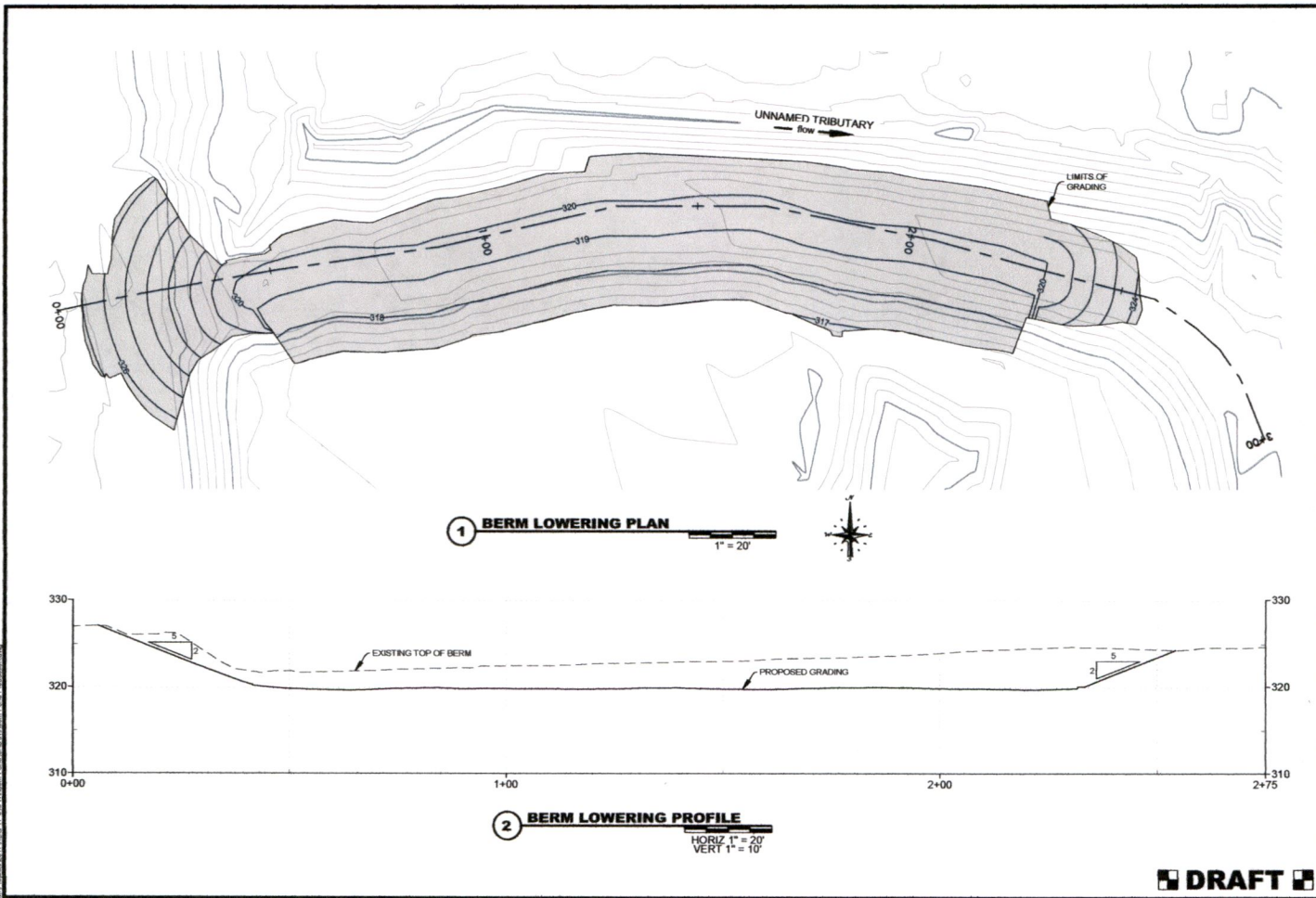
**DRAFT**

RECEIVED

JAN 16 2018

OWRD

R-88500



**BERM LOWERING PLAN AND PROFILE**  
WINDOM POND IMPROVEMENT PROJECT  
FISHER, OR

NO.	DATE	BY	DESCRIPTION	CHK
1	1/26/17	DF	DRAFT	CS

PROJECT NUMBER  
RDG-17-046

DRAWING NUMBER  
**4.0**

Drawing 5 of 8

RECEIVED  
JAN 16 2018  
OWRD

R-008500

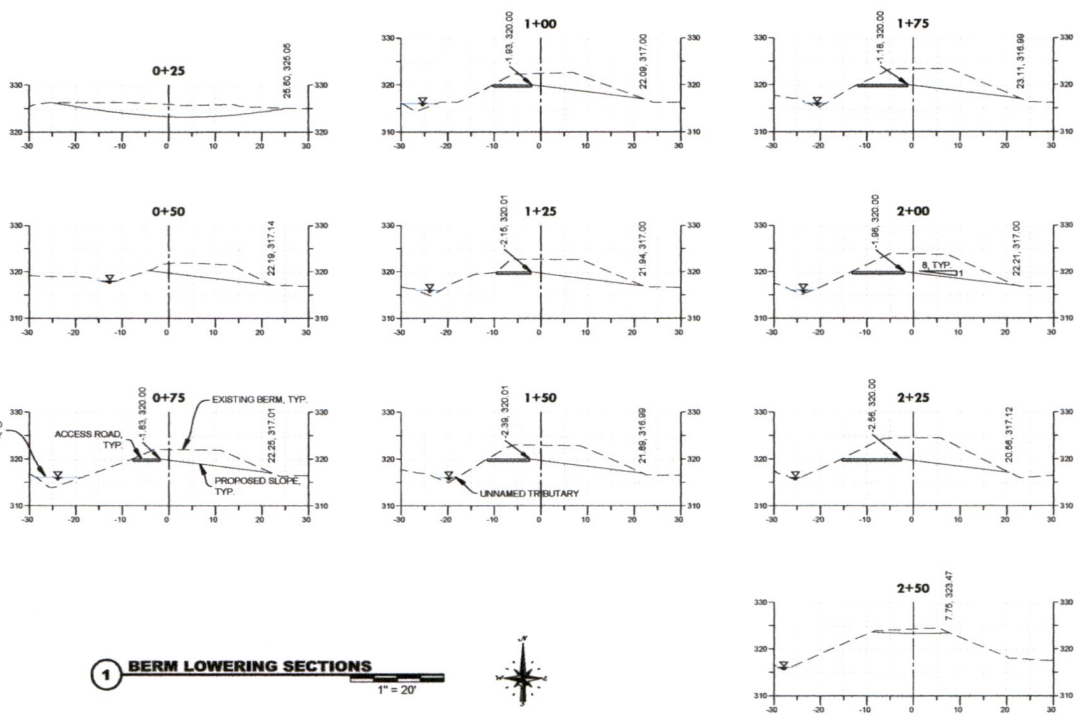
M:\Drawings\2017\2017-04-11-Windom Pond\DWG\Windom Pond Production.dwg



**BERM LOWERING SECTIONS**  
 WINDOM POND IMPROVEMENT PROJECT  
 FISHER, OR

NO.	DATE	BY	DESCRIPTION	CHK
1	12/20/17	CF	DRAFT	CF

PROJECT NUMBER: 800-17-048  
 DRAWING NUMBER: **4.1**  
 Drawing 6 of 6



**1 BERM LOWERING SECTIONS**  
 1" = 20'

**DRAFT**

RECEIVED  
 JAN 16 2018  
 OWRD