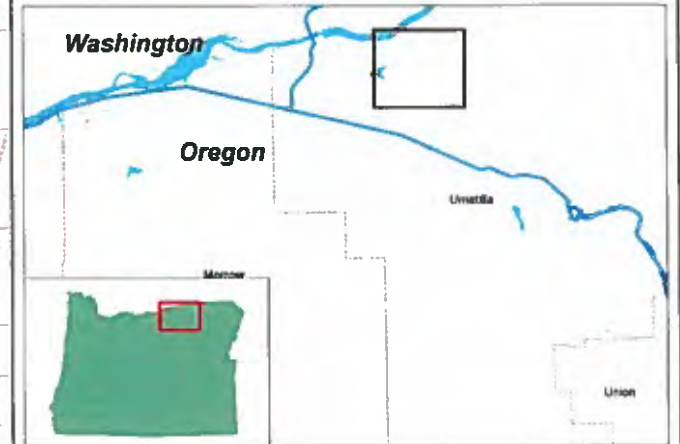


East Permit Place of Use
Map Frame A

NOWA



Legend

- Proposed Pump Station
- Proposed Pipeline Route
- ▨ Proposed Place of Use - East
- Existing Pump Stations
- Existing Delivery Systems
- Surface water
- Groundwater
- Storage
- Surface water, primary
- Surface water, supplemental
- Groundwater, primary
- Groundwater, supplemental
- Storage, primary
- Storage, supplemental
- Surface Water
- Groundwater
- Storage

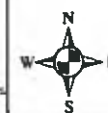
RECEIVED

SEP 12 2016

OWRD

1 inch = 0.25 miles

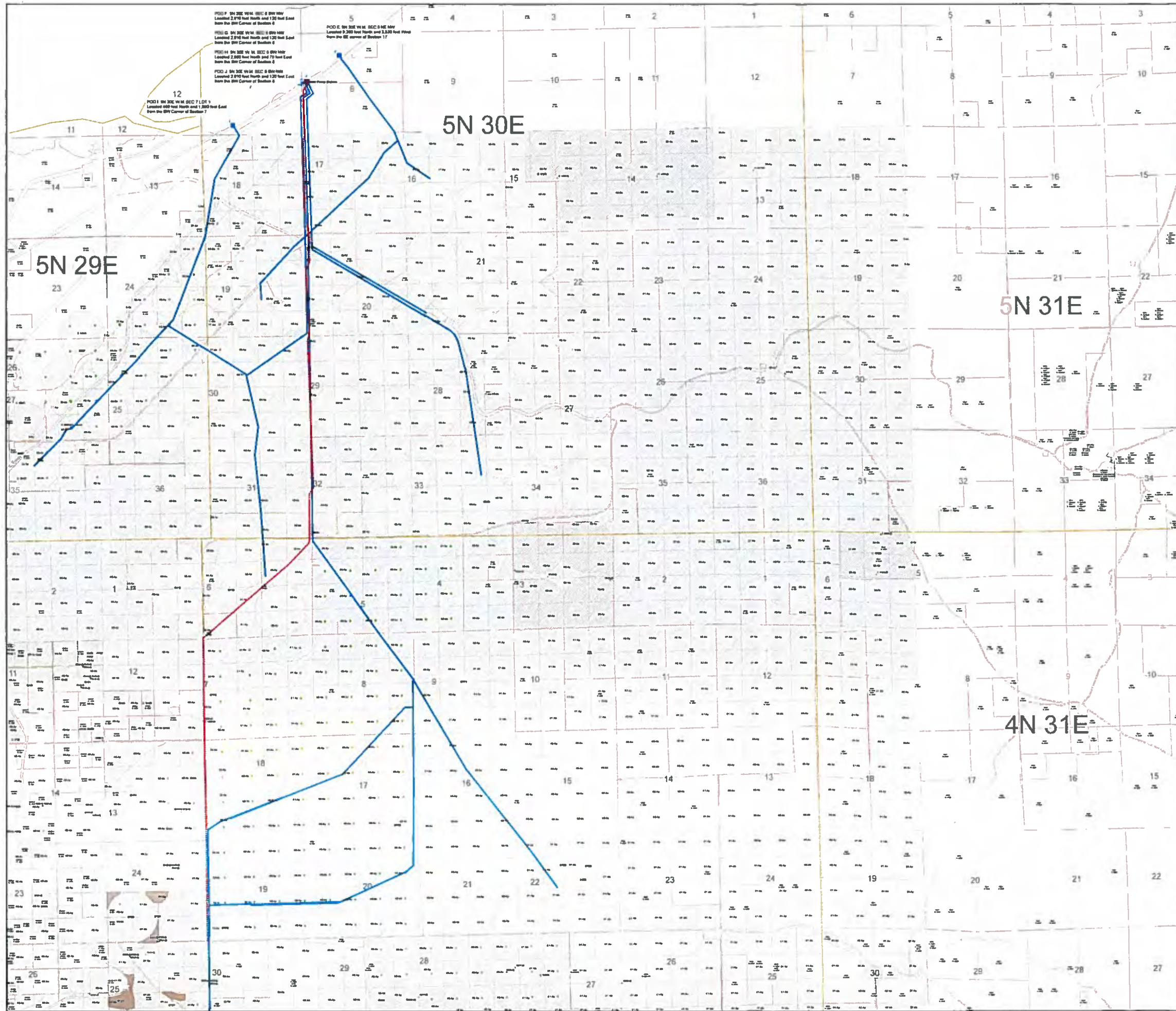
This map was prepared for the purpose of identifying the location of a water right only and it is not intended to provide legal dimension or locations of property ownership lines.



Projection: OR State Plane North
Datum: NAD 1983
Date: 4/6/2016
Data Sources:

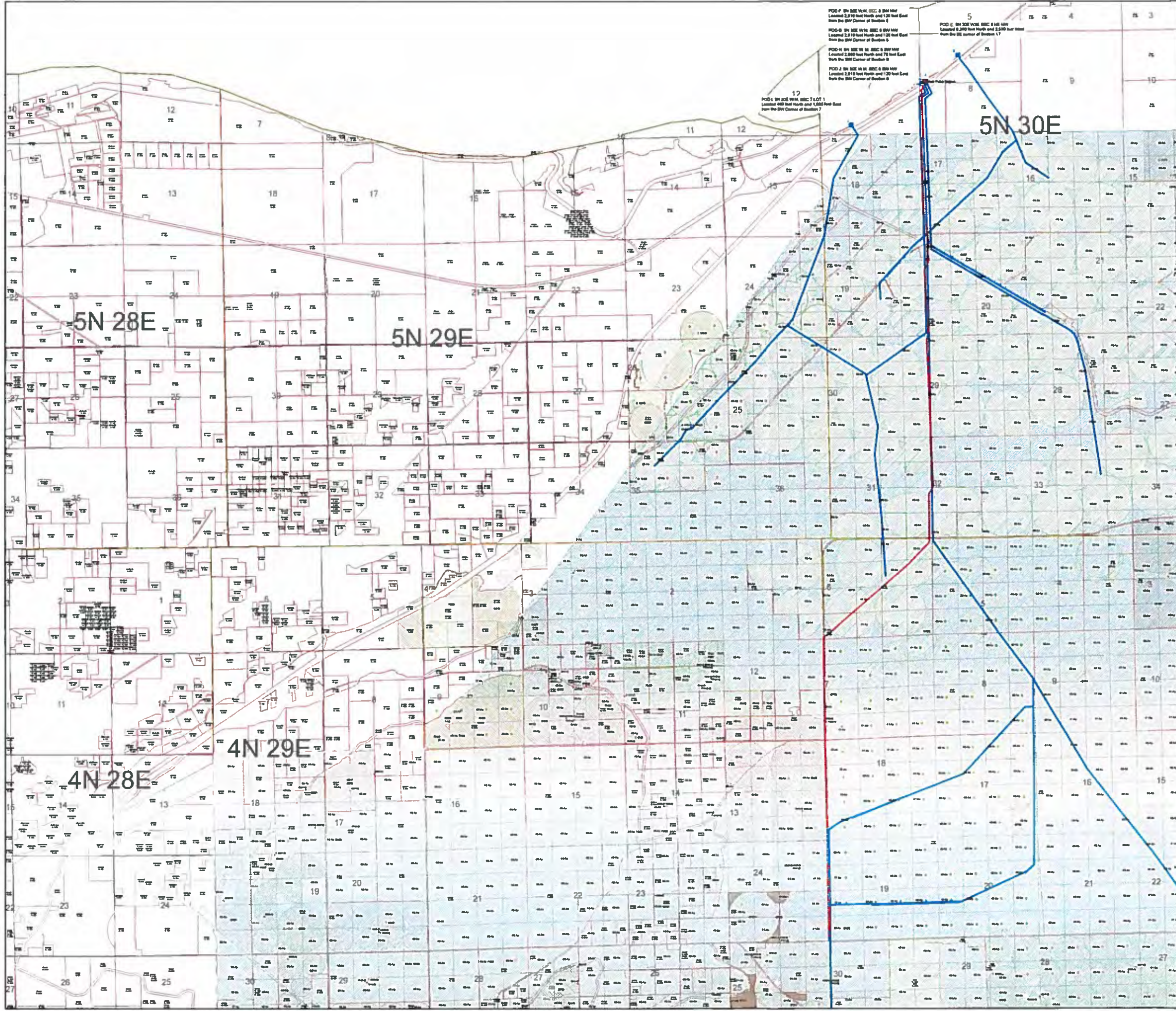
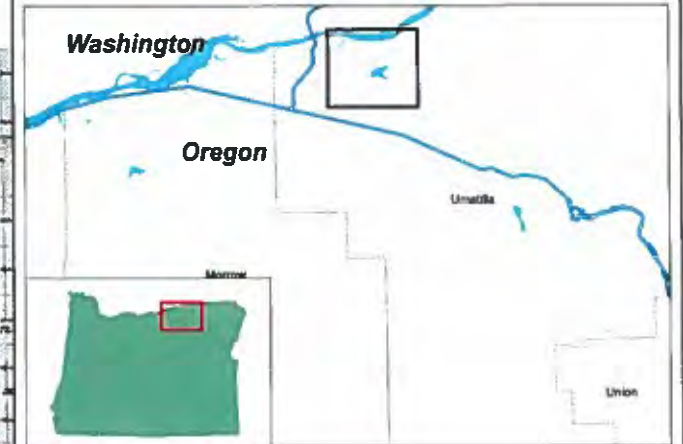


S-88290



East Permit Place of Use
Map Frame B

NOWA



- Legend**
- Proposed Pump Station
 - Proposed Pipeline Route
 - ▨ Proposed Place of Use - East
 - Existing Pump Stations
 - Existing Delivery Systems
 - Surface water
 - Groundwater
 - Storage
 - Surface water, primary
 - Surface water, supplemental
 - Groundwater, primary
 - Groundwater, supplemental
 - Storage, primary
 - Storage, supplemental
 - Surface Water
 - Groundwater
 - Storage

RECEIVED
SEP 12 2016
OWRD

1 inch = 0.25 miles

This map was prepared for the purpose of identifying the location of a water right only and it is not intended to provide legal dimension or locations of property ownership lines.



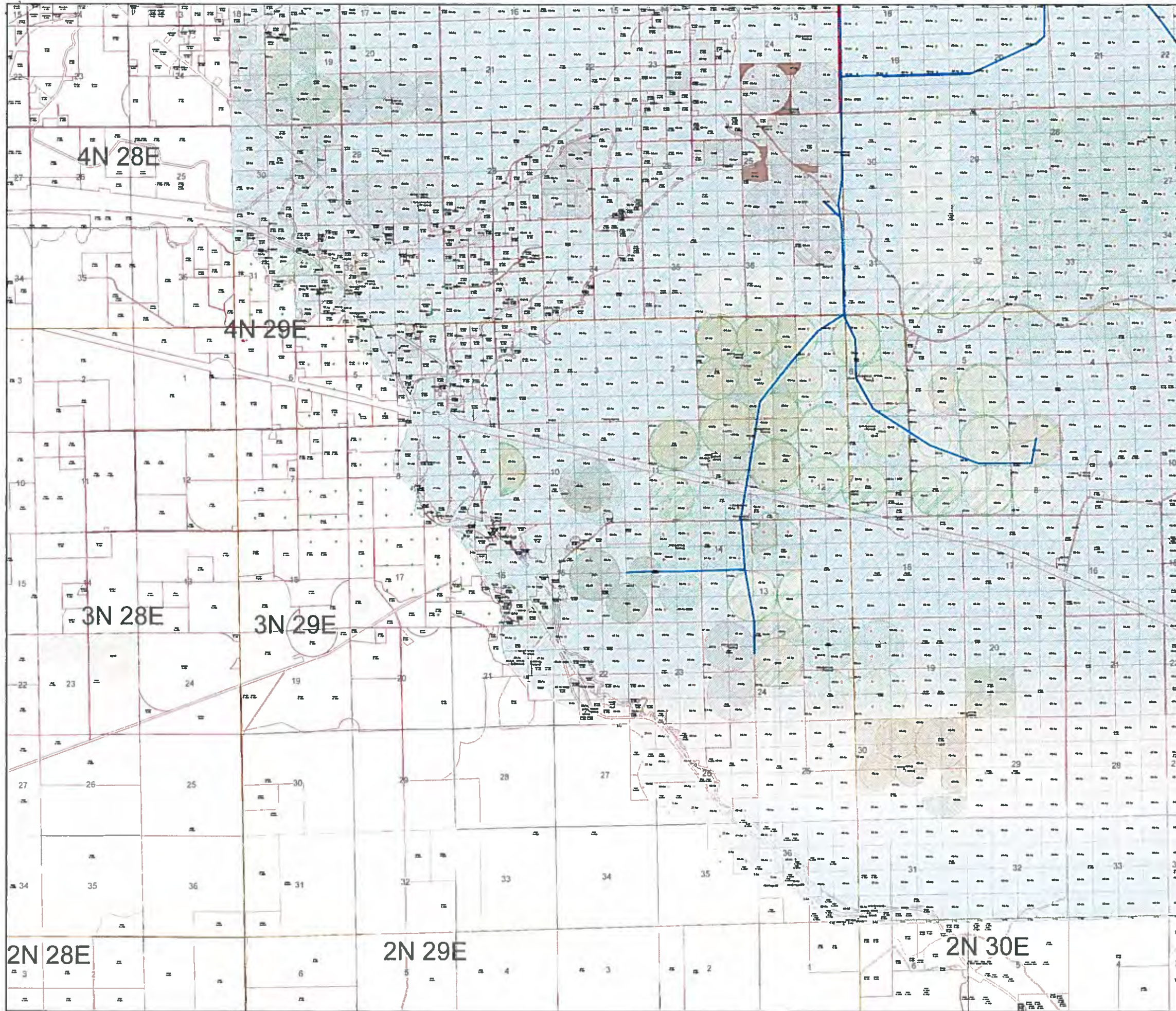
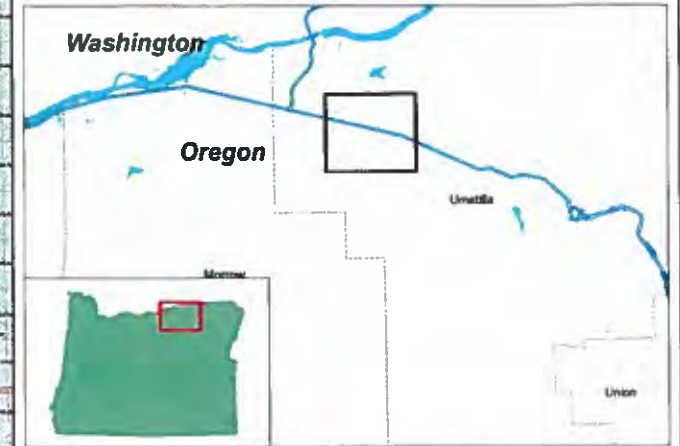
Projection: OR State Plane North
Datum: NAD 1983
Date: 4/6/2016
Data Sources:



S-88290

East Permit Place of Use
Map Frame C

NOWA



Legend

- Proposed Pump Station
- Proposed Pipeline Route
- Proposed Place of Use - East
- Existing Pump Stations
- Existing Delivery Systems
- Surface water
- Groundwater
- Storage
- Surface water, primary
- Surface water, supplemental
- Groundwater, primary
- Groundwater, supplemental
- Storage, primary
- Storage, supplemental
- Surface Water
- Groundwater
- Storage

RECEIVED
SEP 12 2016
OWRD

1 inch = 0.25 miles

This map was prepared for the purpose of identifying the location of a water right only and it is not intended to provide legal dimension or locations of property ownership lines.



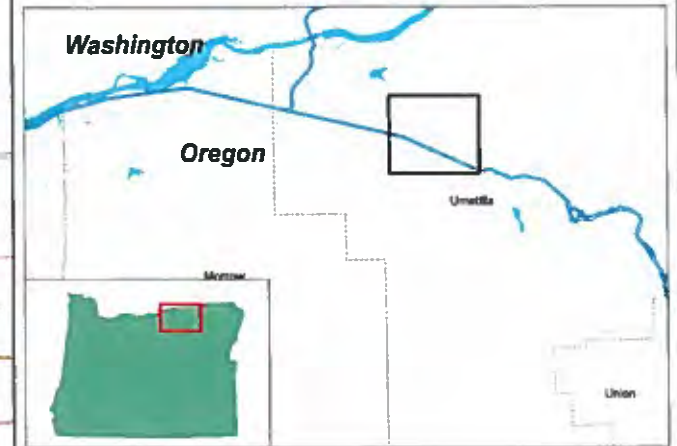
Projection: OR State Plane North
Datum: NAD 1983
Date 4/6/2016
Data Sources:



5-88296

East Permit Place of Use
Map Frame D

NOWA



Legend

- Proposed Pump Station
- Proposed Pipeline Route
- Proposed Place of Use - East
- Existing Pump Stations
- Existing Delivery Systems
- Surface water
- Groundwater
- Storage
- Surface water, primary
- Surface water, supplemental
- Groundwater, primary
- Groundwater, supplemental
- Storage, primary
- Storage, supplemental
- Surface Water
- Groundwater
- Storage

RECEIVED
SEP 12 2016
OWRD

1 inch = 0.25 miles

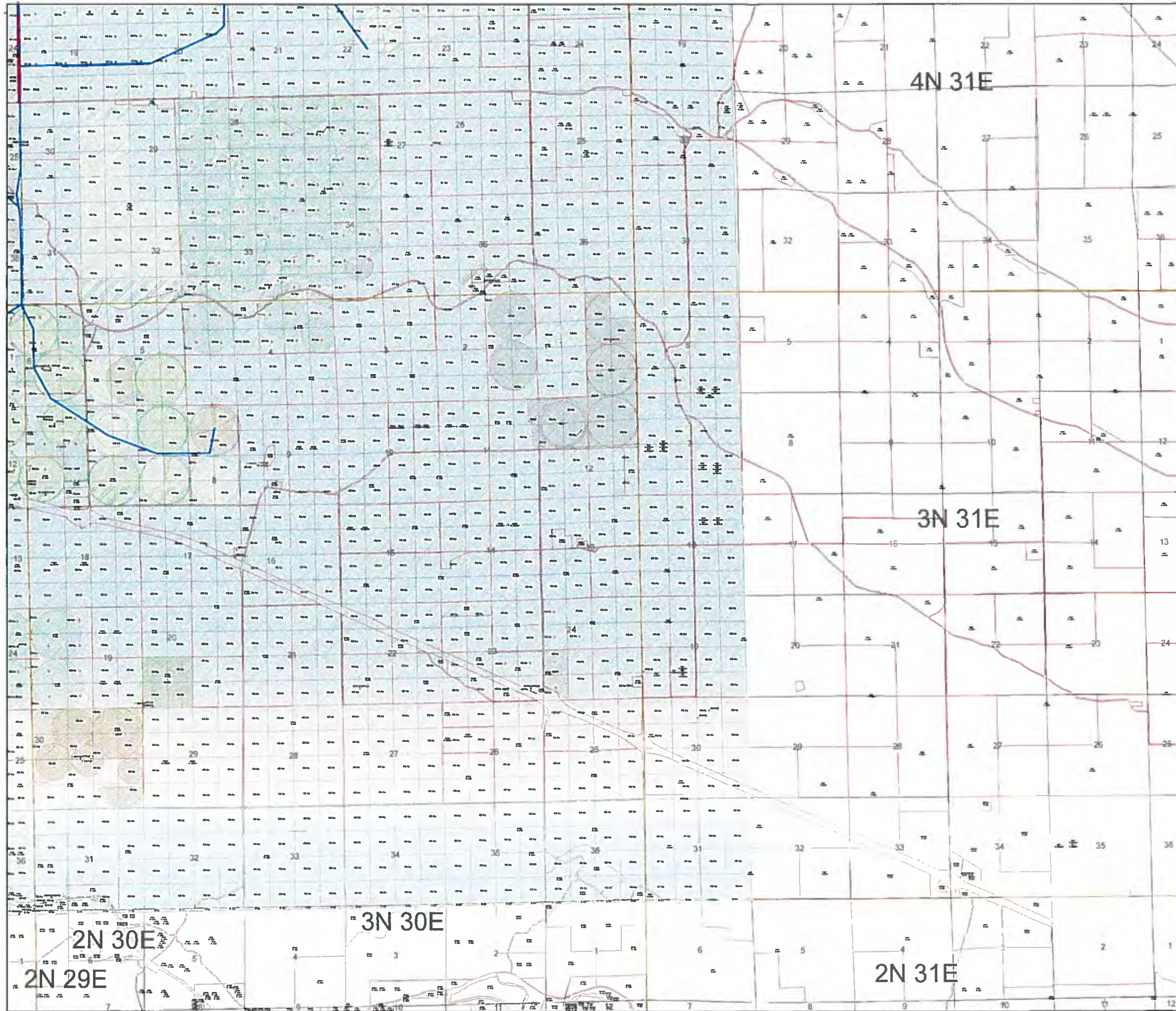
This map was prepared for the purpose of identifying the location of a water right only and it is not intended to provide legal dimension or locations of property ownership lines.

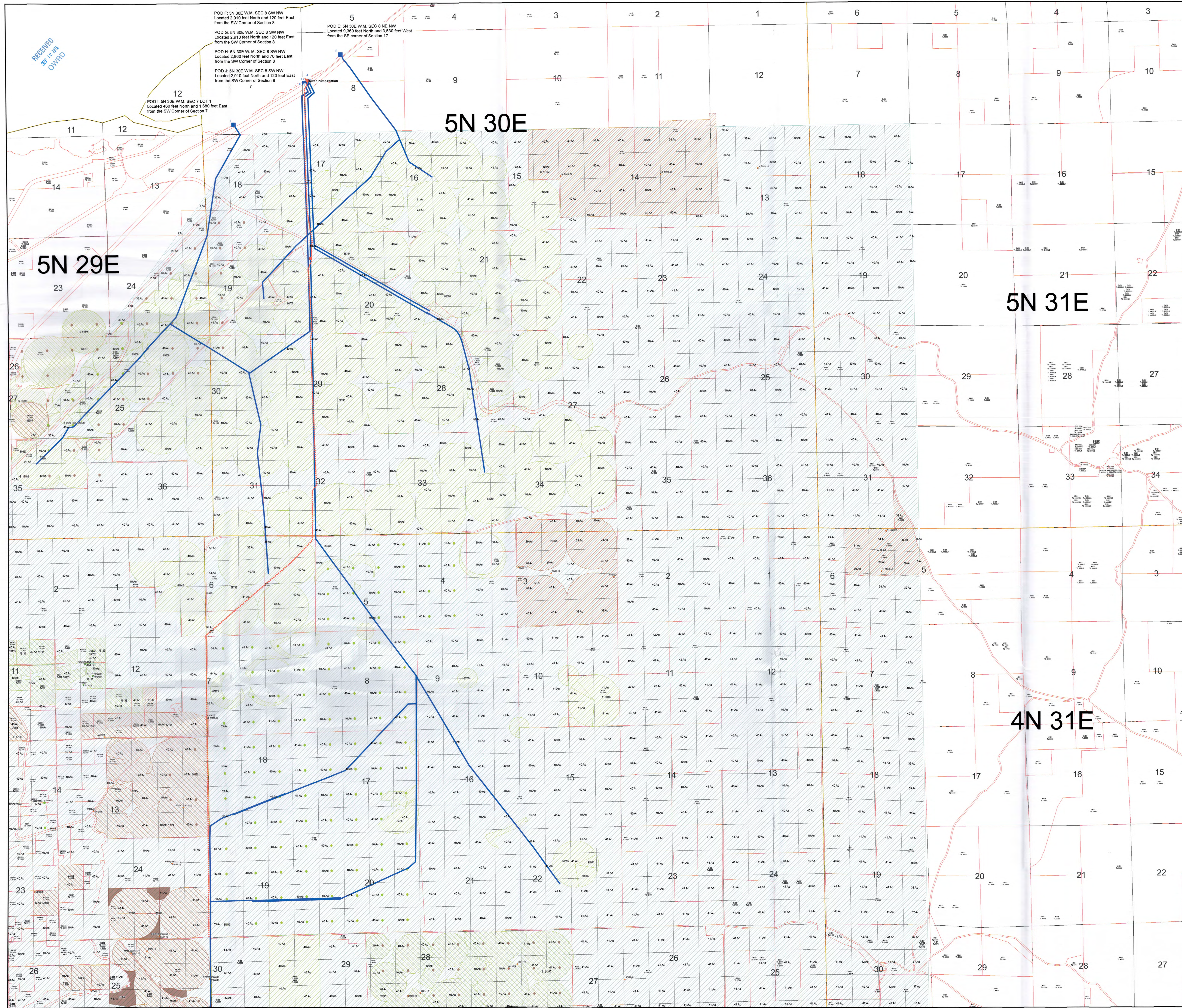


Projection: OR State Plane North
Datum: NAD 1983
Date: 4/6/2016
Data Sources:



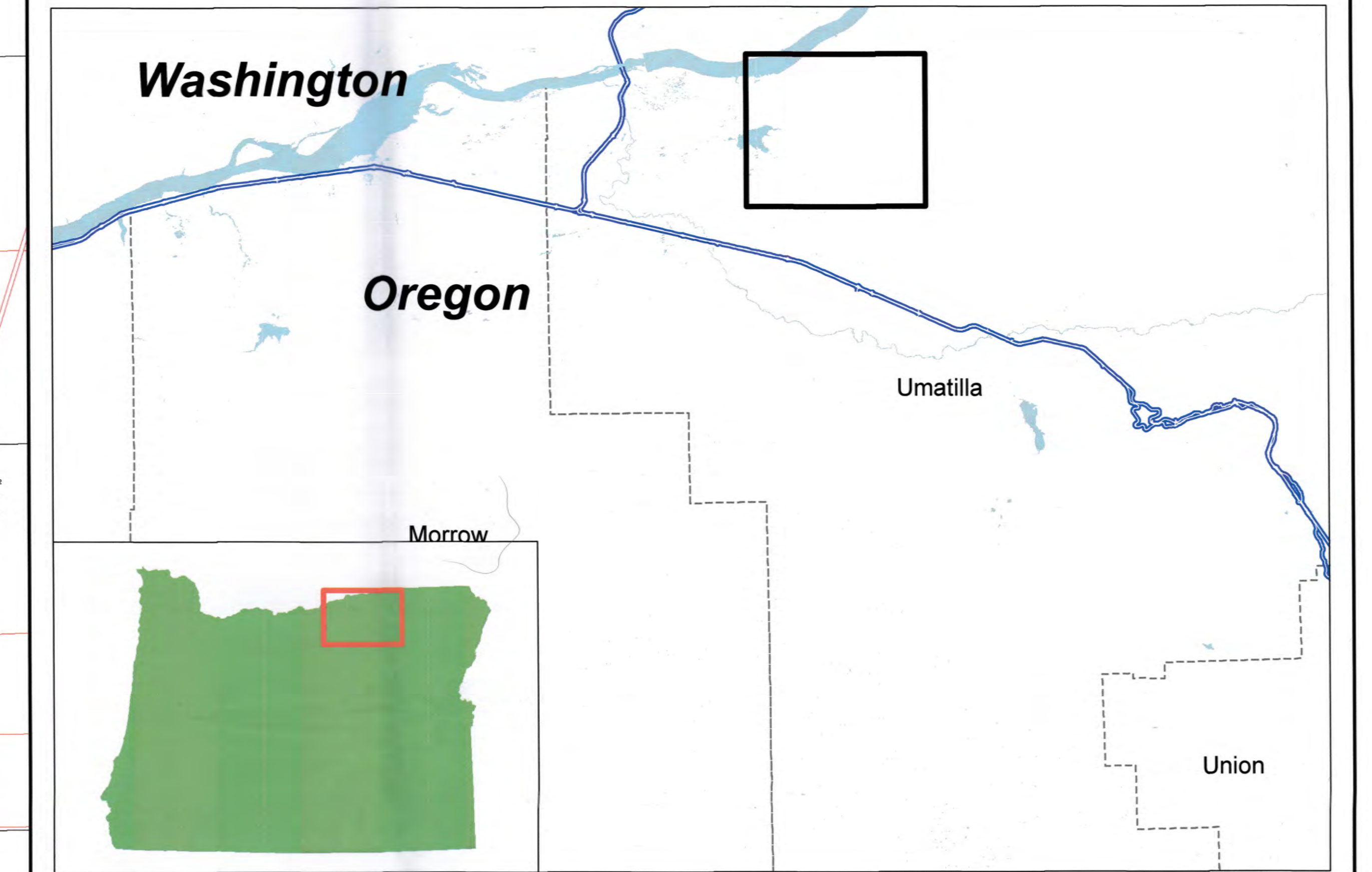
S-8820





**East Permit Place of Use
Map Frame A**

NOWA

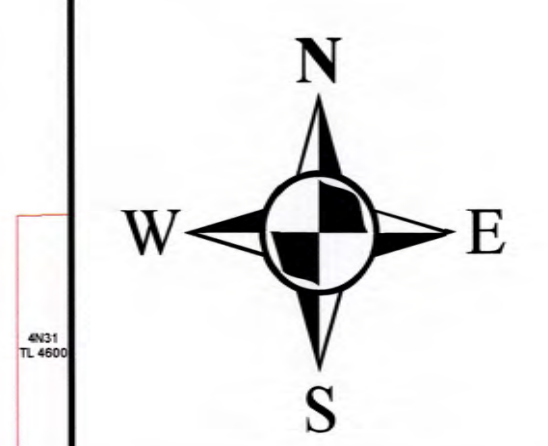


Legend

- Proposed Pump Station
- Proposed Pipeline Route
- ▨ Proposed Place of Use - East
- Existing Pump Stations
- Existing Delivery Systems
- Surface water
- Groundwater
- Storage
- ▨ Surface water, primary
- ▨ Surface water, supplemental
- ▨ Groundwater, primary
- ▨ Groundwater, supplemental
- ▨ Storage, primary
- ▨ Storage, supplemental
- Surface Water
- Groundwater
- Storage

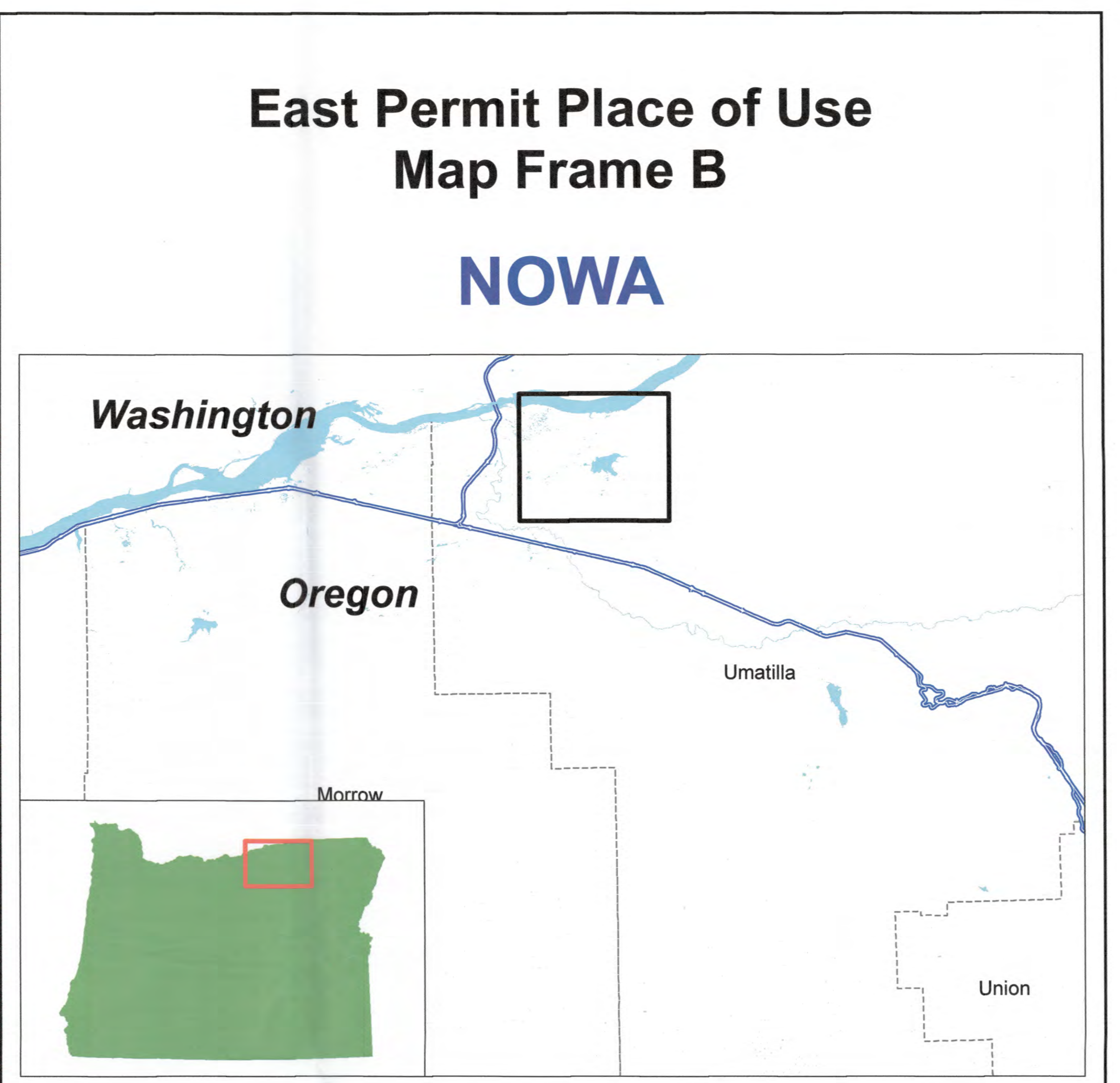
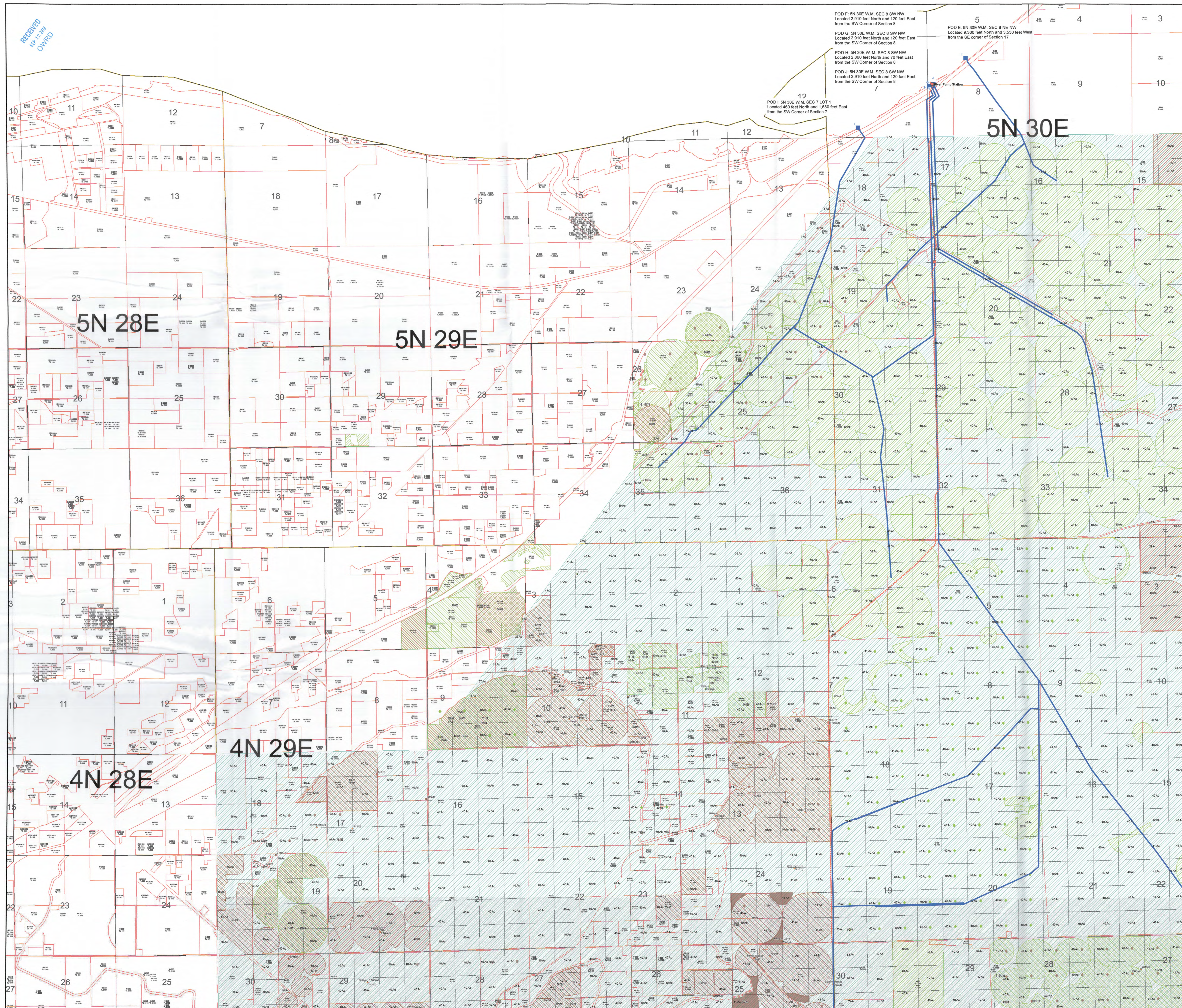
1 inch = 0.25 miles

This map was prepared for the purpose of identifying the location of a water right only and it is not intended to provide legal dimension or locations of property ownership lines.



Projection: OR State Plane North
Datum: NAD 1983
Date 4/6/2016
Data Sources:





- ### Legend
- Proposed Pump Station
 - Proposed Pipeline Route
 - ▨ Proposed Place of Use - East
 - Existing Pump Stations
 - Existing Delivery Systems
 - Surface water
 - Groundwater
 - Storage
 - ▨ Surface water, primary
 - ▨ Surface water, supplemental
 - ▨ Groundwater, primary
 - ▨ Groundwater, supplemental
 - ▨ Storage, primary
 - ▨ Storage, supplemental
 - Surface Water
 - Groundwater
 - Storage

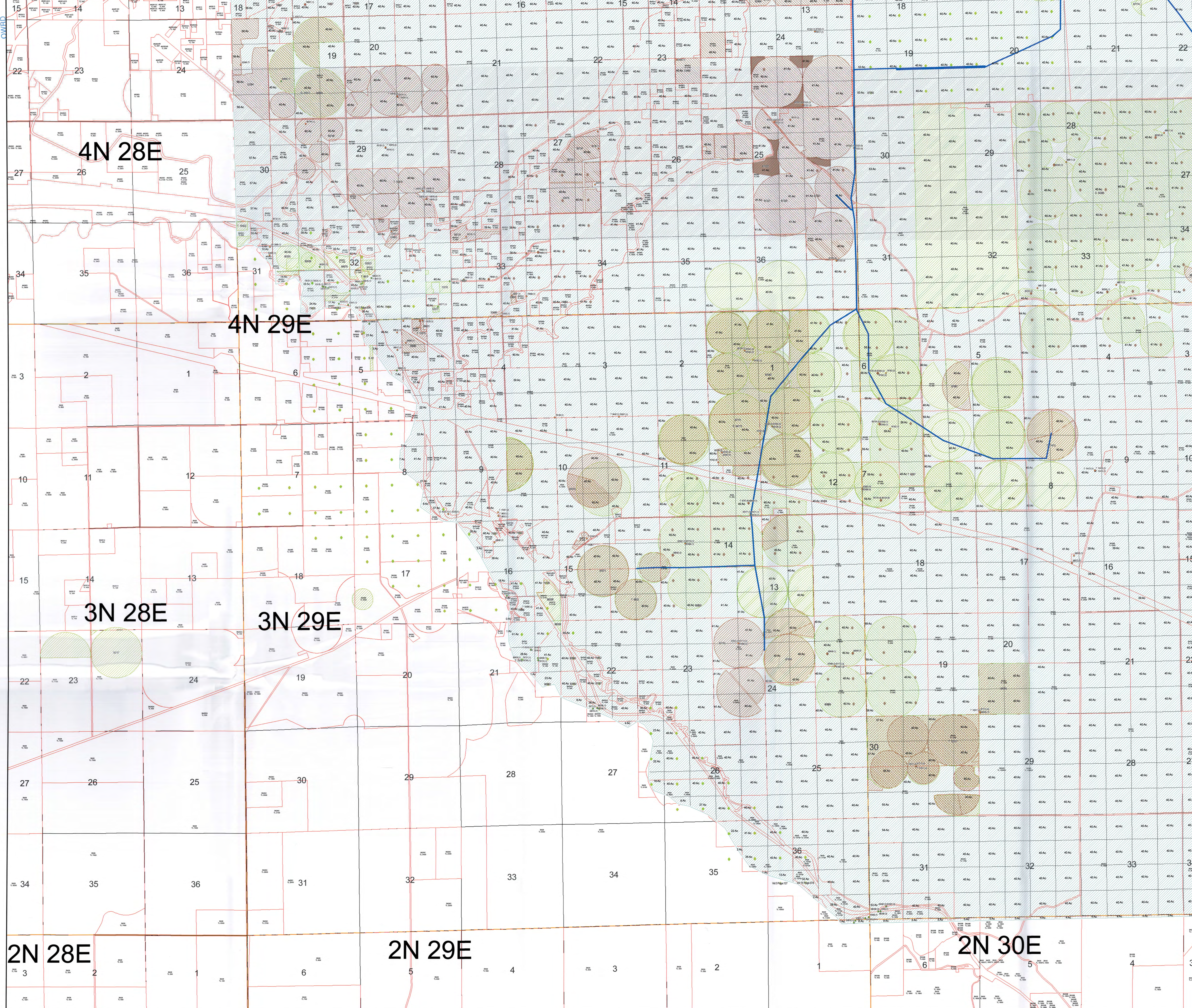
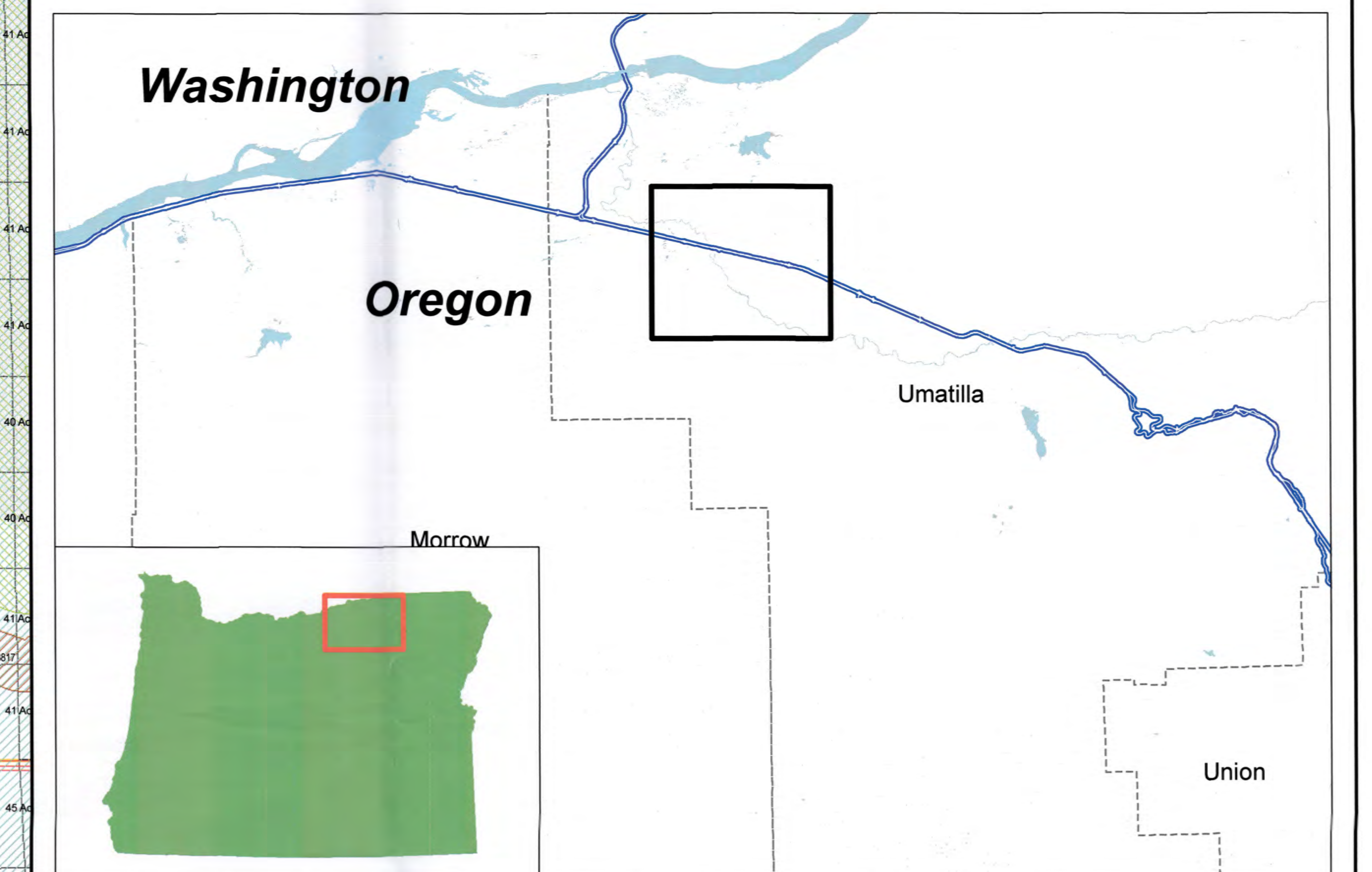
1 inch = 0.25 miles

This map was prepared for the purpose of identifying the location of a water right only and it is not intended to provide legal dimension or locations of property ownership lines.

RECEIVED
SEP 12 2016
OWBDD

East Permit Place of Use Map Frame C

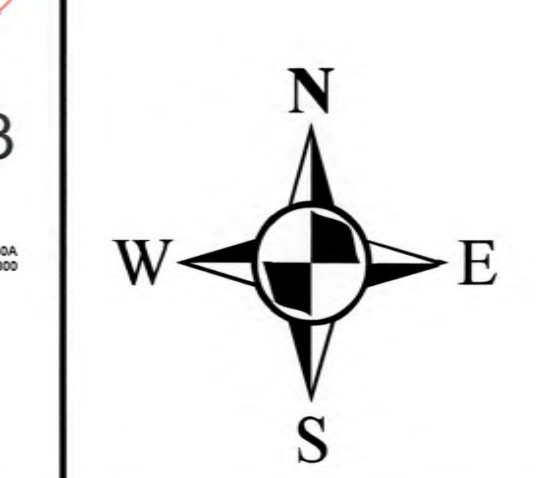
NOWA



- ### Legend
- Proposed Pump Station
 - - - Proposed Pipeline Route
 - ▨ Proposed Place of Use - East
 - Existing Pump Stations
 - Existing Delivery Systems
 - Surface water
 - Groundwater
 - Storage
 - ▨ Surface water, primary
 - ▨ Surface water, supplemental
 - ▨ Groundwater, primary
 - ▨ Groundwater, supplemental
 - ▨ Storage, primary
 - ▨ Storage, supplemental
 - Surface Water
 - Groundwater
 - Storage

1 inch = 0.25 miles

This map was prepared for the purpose of identifying the location of a water right only and it is not intended to provide legal dimension or locations of property ownership lines.

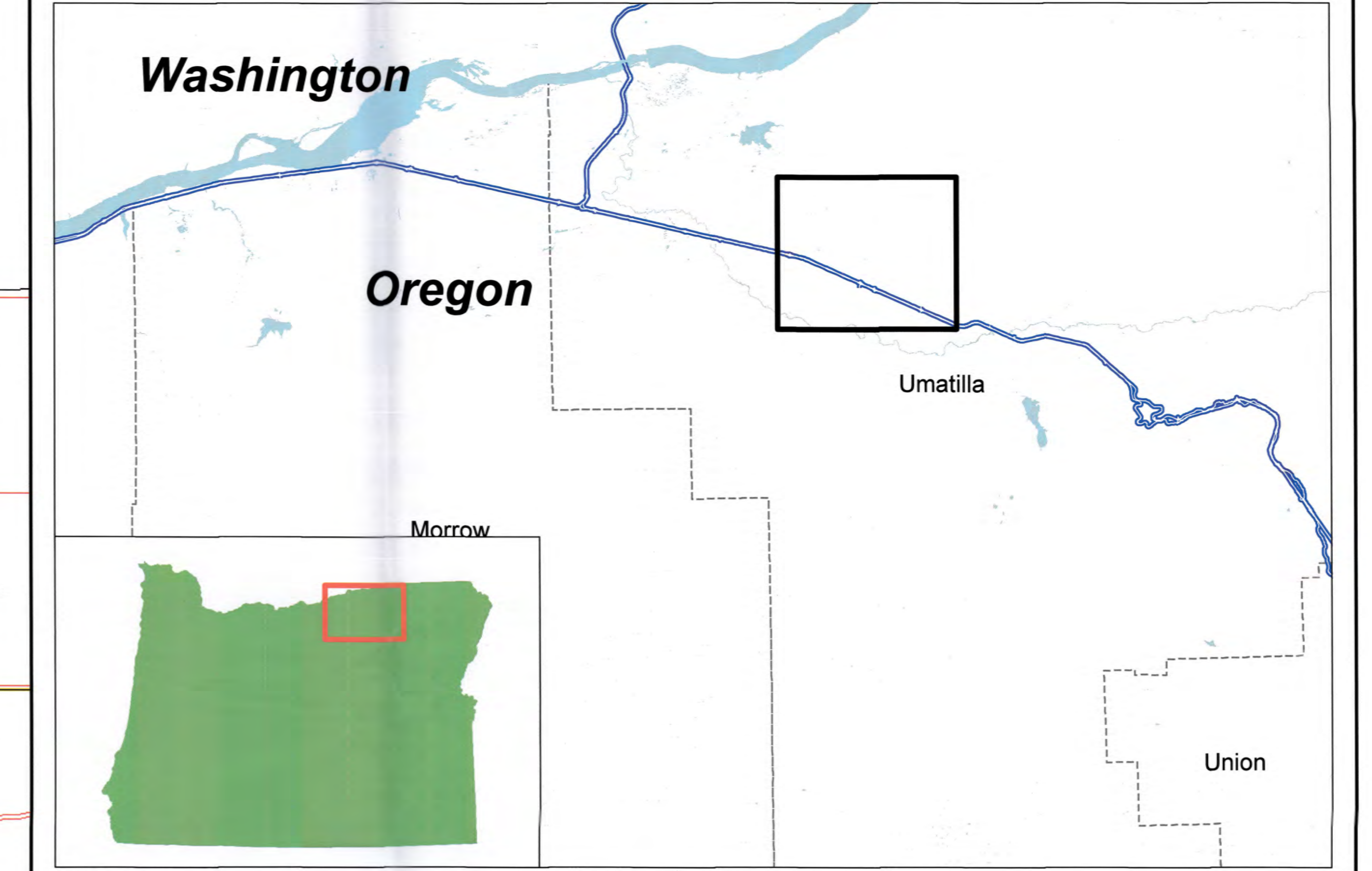


Projection: OR State Plane North
 Datum: NAD 1983
 Date 4/6/2016
 Data Sources:



**East Permit Place of Use
Map Frame D**

NOWA

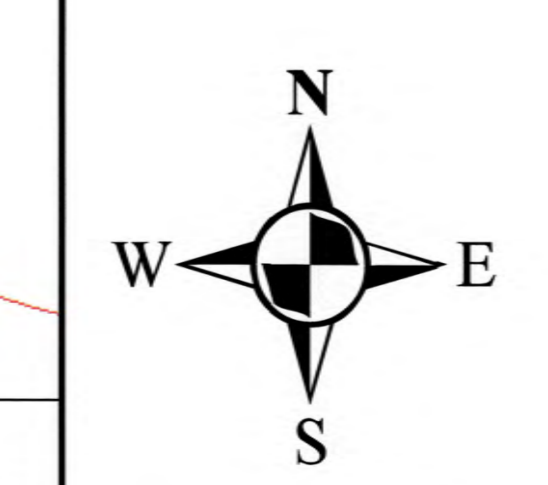


Legend

- Proposed Pump Station
- Proposed Pipeline Route
- ▨ Proposed Place of Use - East
- Existing Pump Stations
- Existing Delivery Systems
- Surface water
- Groundwater
- Storage
- ▨ Surface water, primary
- ▨ Surface water, supplemental
- ▨ Groundwater, primary
- ▨ Groundwater, supplemental
- ▨ Storage, primary
- ▨ Storage, supplemental
- Surface Water
- Groundwater
- Storage

1 inch = 0.25 miles

This map was prepared for the purpose of identifying the location of a water right only and it is not intended to provide legal dimension or locations of property ownership lines.



Projection: OR State Plane North
Datum: NAD 1983
Date 4/6/2016
Data Sources:

