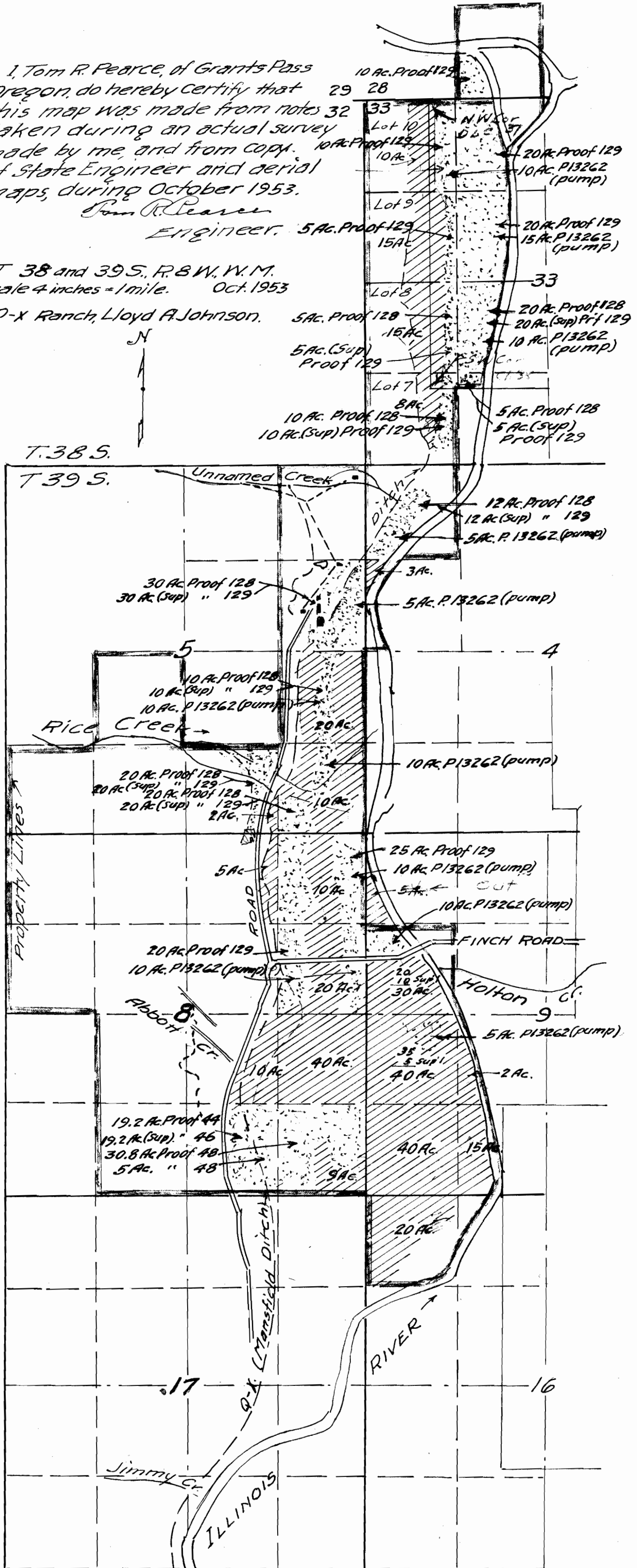


I, Tom R. Pearce, of Grants Pass Oregon, do hereby certify that this map was made from notes taken during an actual survey made by me, and from copies of State Engineer and aerial maps, during October 1953.

Tom R. Pearce
Engineer.

T 38 and 39 S., R. 8 W., W.M.
Scale 4 inches = 1 mile. Oct. 1953
Q-X Ranch, Lloyd A. Johnson.



Legend:

This Application
40 Ac.

Existing Rights
10 Ac

Monument Corner conc. Dam.
Diversion



Application No. 28912
Permit No. 22718