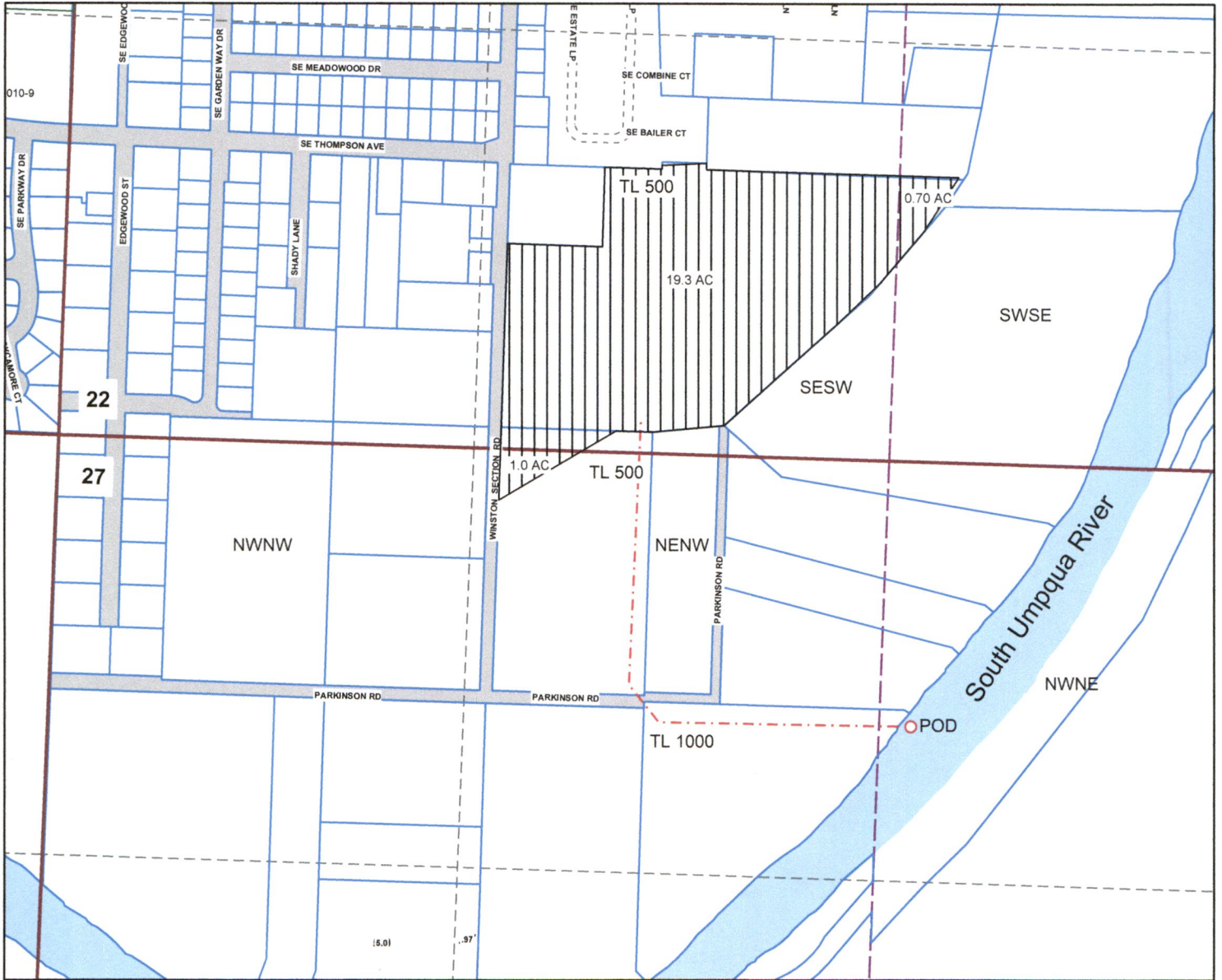




**Application Map**  
**Morton Banks**  
**T.28S. R.6W. Sections 22 and 27**  
**Douglas County**  
**Scale 1" = 500'**

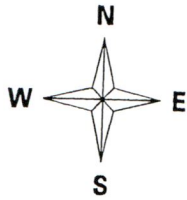


**Point of Diversion is 860 ft. South and 85 ft. East from the  
North Quarter Section Corner of Section 23.**

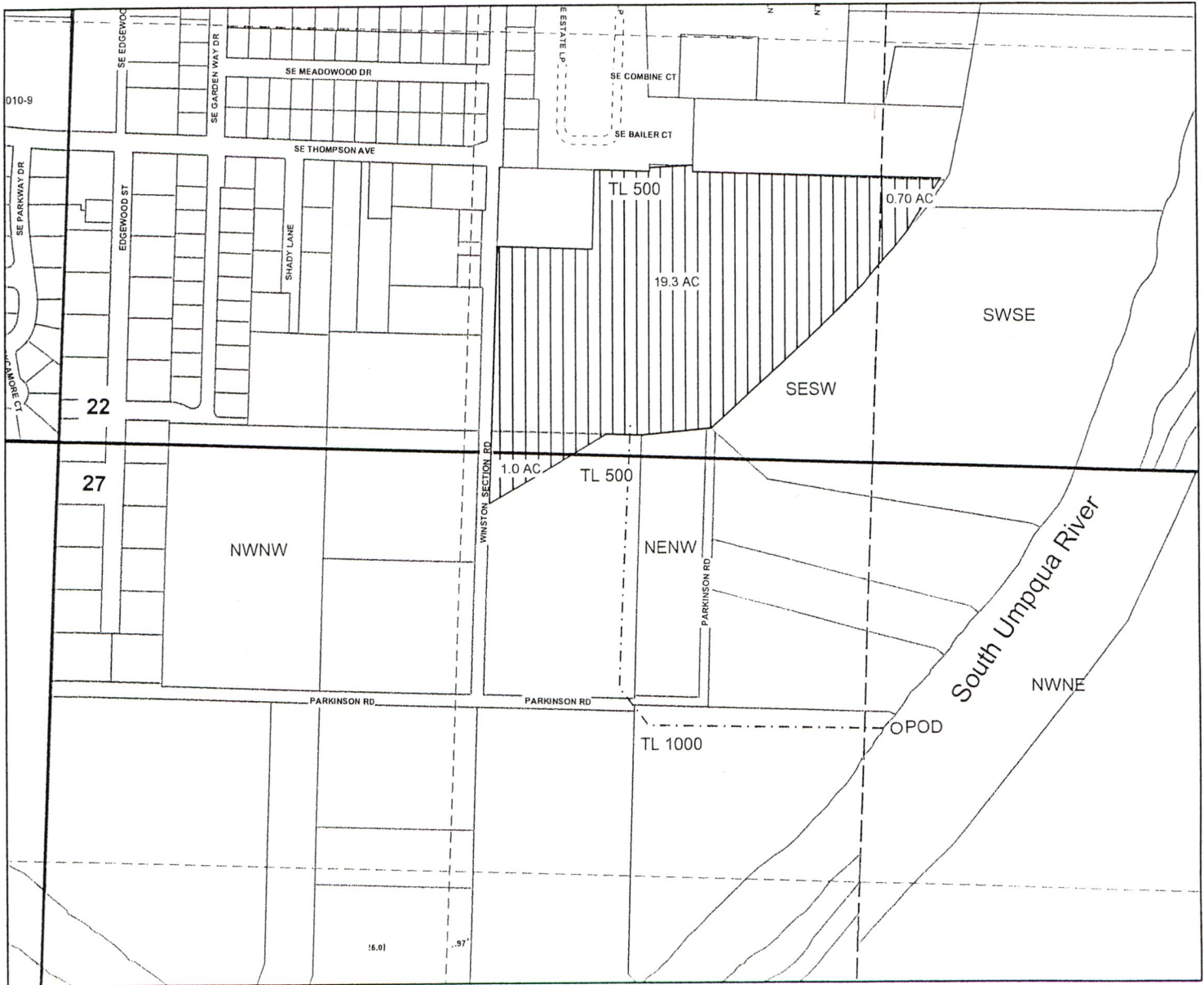
↑  
227  
270  
JS

**RECEIVED**  
FEB 16 2018  
**OWRD**

S-88574



Application Map  
Morton Banks  
T.28S. R.6W. Sections 22 and 27  
Douglas County  
Scale 1" = 500'



Point of Diversion is 860 ft. South and 85 ft. East from the  
North Quarter Section Corner of Section 23.

↑  
22?  
27  
58

RECEIVED

FEB 16 2018

OWRD

S-88574