

**SUMMARY OF PROPERTIES FOR
APPLICATION S-86982 CALA FARMS**

TOTAL 2,603.34 ACRES OF WATER RIGHTS REQUESTED

Map and Section	Quarter/ Quarter	Acres of Water Rights Requested
Cala Map 1 - 12S4W11		81.90
	NWSE	2
	NESE	4.90
	SWSE	32
	SESE	40
	SESW	3
Cala Map 2, 3, 4, 5, and 6 - 12S4W12		227.25
	SWNW	23.76
	NWSW	33.06
	NESW	40
	SESW	7
	SWSE	30
	SESE	35.93
	NWSE	40
Cala Map 4, 5, and 7 - 12S4W13		172.05
	NWNW	38.24
	NWNE	20.77
	NENW	37.80
	NENE	21
	SWNW	27.12
	SESW	27.12

Map and Section	Quarter/ Quarter	Acres of Water Rights Requested
Cala Map 8 - 12S4W14		161.72
	NENW	16.63
	NWNE	40
	NENE	40
	SEnw	9
	SWNE	36
	SENE	20.09
Cala Map 9 - 12S3W18		105.02
	SWNW	9.02
	SEnw	2
	NWSW	40
	NESW	11
	SWSW	38
	SESW	5
Cala Map 10 and 12 - 12S3W19		237.72
	NWNW	23.72
	NENW	22
	NWNE	38
	NENE	40
	SWNE	26
	SESE	40
	NWSE	18
	NESE	30

Map and Section	Quarter/ Quarter	Acres of Water Rights Requested
Cala Map 10, 11, 13, and 18- 12S3W20		351.15
	NWNW	10.97
	NWSW	36
	SWNW	40
	NENW	13.5
	NESW	40
	SWSW	6
	SENW	38.32
	SESW	10
	NWSE	38.18
	SWSE	38.18
	NESE	40
	SESE	40
Cala Map 14 and 15 - 12S3W21		296.99
	NWSW	40
	SWSW	40
	NESW	28.51
	SESW	28.48
	NWSE	40
	NESE	40
	SWSE	40
	SESE	40
Cala Map 12 - 12S4W24		94.29
	SWSE	5
	SWSW	.5
	NENE	33.5
	SWNE	3.62
	SESE	11.67
	NWNE	14
	SENE	26

Map and Section	Quarter/ Quarter	Acres of Water Rights Requested
Cala Map 16 and 17 - 12S3W28		267.61
	NWNW	35
	SWNW	29
	NENW	40
	SEnw	22.15
	NWNE	19.23
	SWNE	33
	NWSE	10
	NENE	20
	NESE	19.23
	SENE	40
Cala Map 19, 20, and 21 - 12S3W29		78.29
	NWNW	13.29
	NENW	20
	SEnw	3
	NESW	25.6
	SWSW	3
	SESW	13.4
Cala Map 20 and 22 - 12S3W30		60.64
	SWNE	.64
	SENE	7
	NWSE	6
	NESE	10
	SWSE	8
	SESE	29

Map and Section	Quarter/ Quarter	Acres of Water Rights Requested
Cala Map 20, 21, 23, 24, 25, 26, 28 and 29 - 12S3W31		205.59
	NWNE	3
	NENW	13.61
	NENE	11
	SWNE	9
	SENE	31
	NENW	13.61
	NWNW	3
	NWSE	8
	SWSE	34.10
	NESE	23
	SESE	40
	SESW	16.27
Cala Map 23 and 24 – 12S3W32		70.68
	NENW	12.54
	SENE	.9
	NWNW	1.5
	SWNW	5
	NWSW	23
	SWSW	15
	NESW	7
	SESW	5.74
Cala Map 27 - 12S4W36		68.68
	SWSE	30.68
	SESE	38
Cala Map 27 – 13S4W1		48
	NWNE	18
	NENE	30

Map and Section	Quarter/ Quarter	Acres of Water Rights Requested
Cala Map 26, 28, and 29 - 13S3W6		75.76
	NENW	15
	NENE	10
	NWNE	29.18
	SWNE	8
	NWNW	13.58
TOTAL ACRES		2,603.34

Point of Diversion A – 12s4w14: 1275 Feet South and 1075 Feet West from the NE Corner of Section 14

Point of Diversion B – 12s4w24: 2500 Feet South and 1000 Feet West from the NE Corner of Section 24

Point of Diversion C – 12s3w30: 1800 Feet South and 600 Feet West from the NE corner of Section 30

Point of Diversion D – 12s3w30: 3900 Feet South and 1250 Feet West from the NE corner of Section 30

Point of Diversion E – 12s3w31: 1320 Feet South and 2000 Feet East from the NE Center of Section 31

12S4W11 LOT 300
TOTAL 81.90 ACRES

NWSE 2 ACRES SWSE 32 ACRES
NESE 4.9 ACRES SESE 40 ACRES

SESW 3 ACRES



Oregon Water Resources Department
Water Rights Mapping Tool



Map 1 - Gatchel Bottom

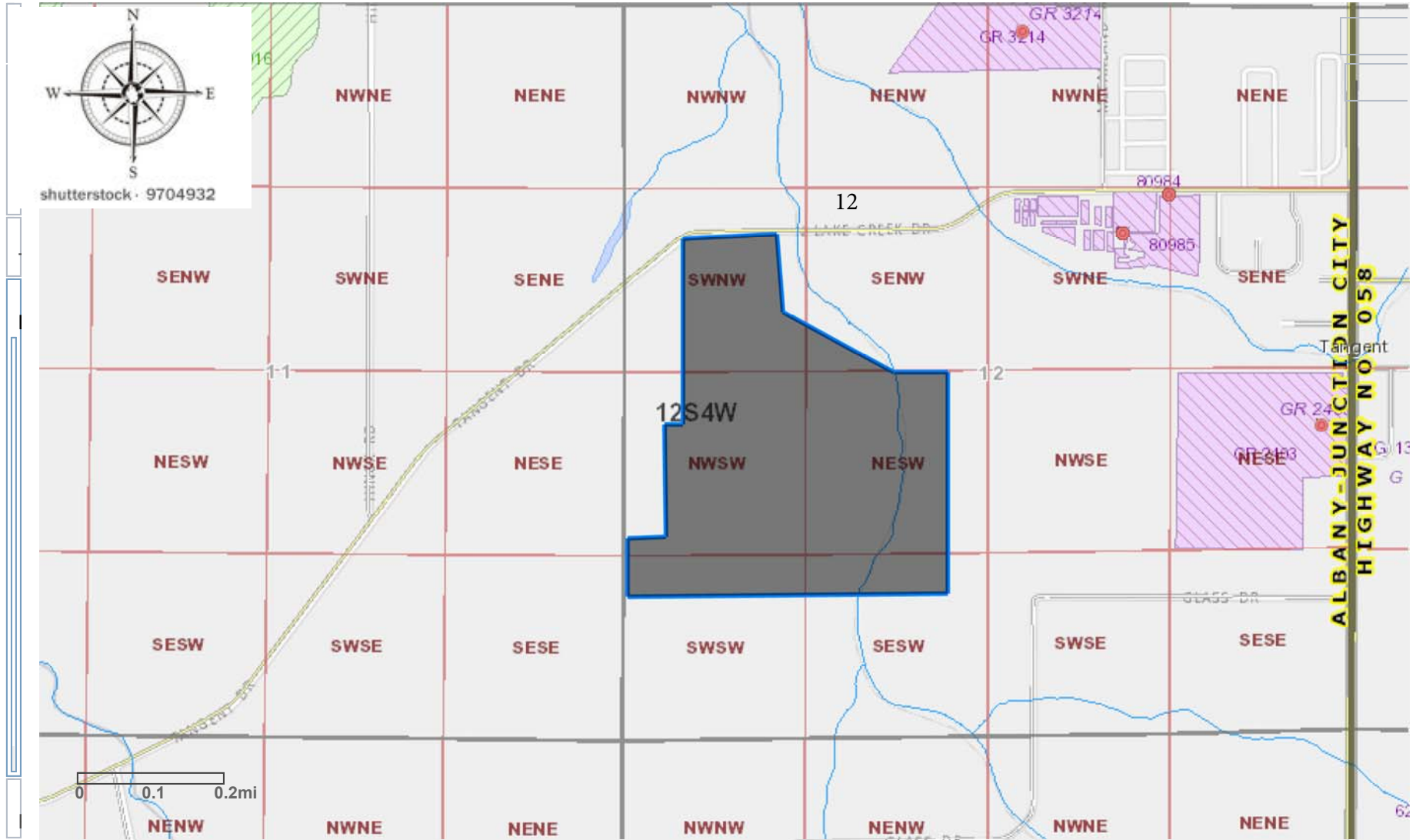
12S4W12 LOT 1100
TOTAL 100.06 ACRES

SWNW 21.26 ACRES NESW 32.24 ACRES
SWSW 8 ACRES SENW 1.5 ACRES

SESW 7 ACRES NWSW 30.06 ACRES



Oregon Water Resources Department
Water Rights Mapping Tool



Map 2 - Cody

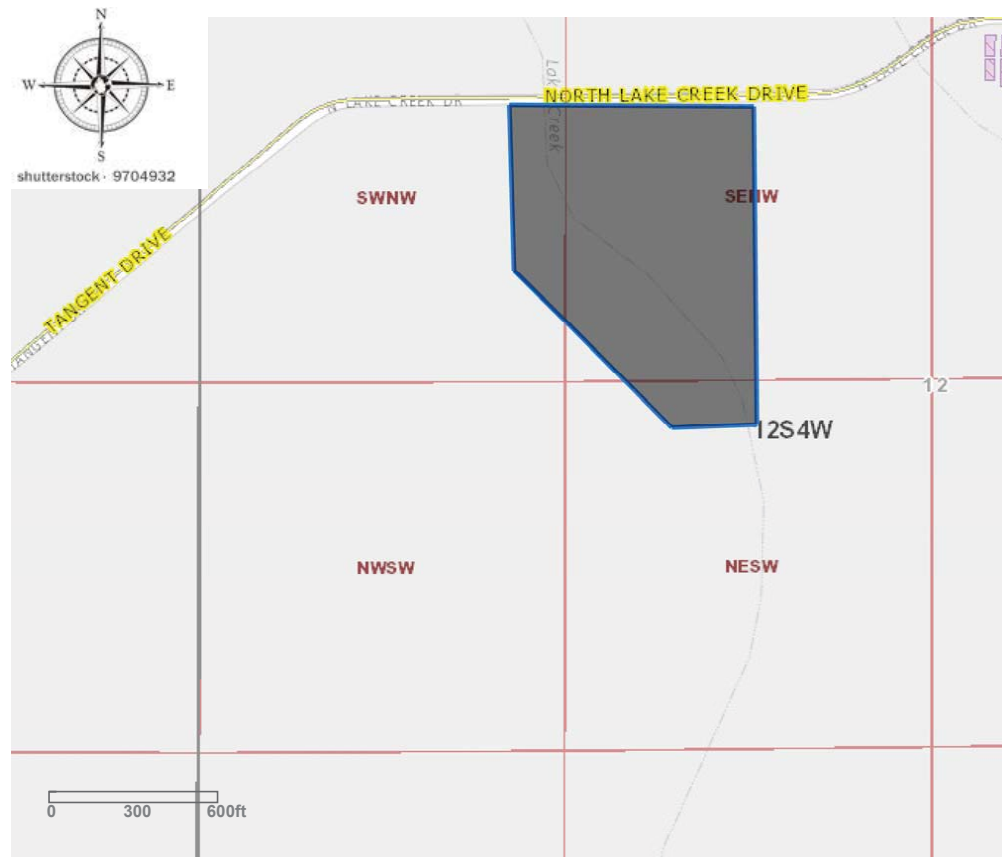
12S 4W 12 #1102

SWNW = 2.5 ACRES

NESW 2.76 ACRES

TOTAL 16.26 ACRES

SE1W = 11 ACRES



Map 3 - Cody

12S4W12 and 13
LOT1203 TOTAL 87.76
ACRES

12SWSW 32 ACRES
13NENW 20 ACRES

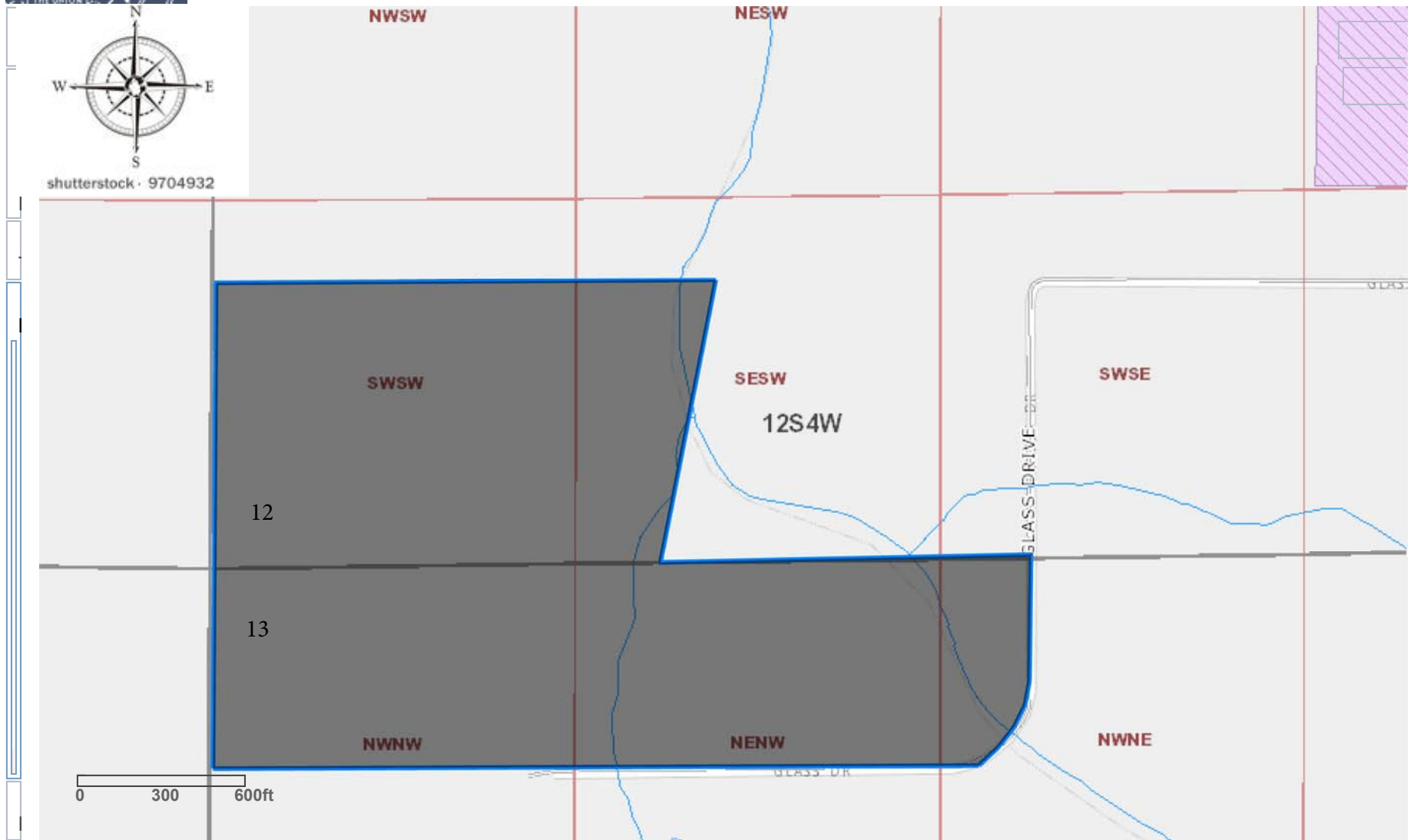
13NWNW 20 ACRES

13NWNE 6.76 ACRES

12SESW 9 ACRES



Oregon Water Resources Department
Water Rights Mapping Tool



Map 4 - Gatchel Slough

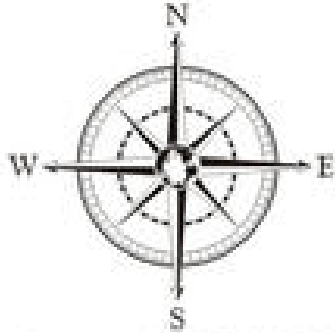
12S4W12 and 13 LOT 1300
TOTAL 83.01 ACRES

12SWSE 20 ACRES
12SESE 28 ACRES

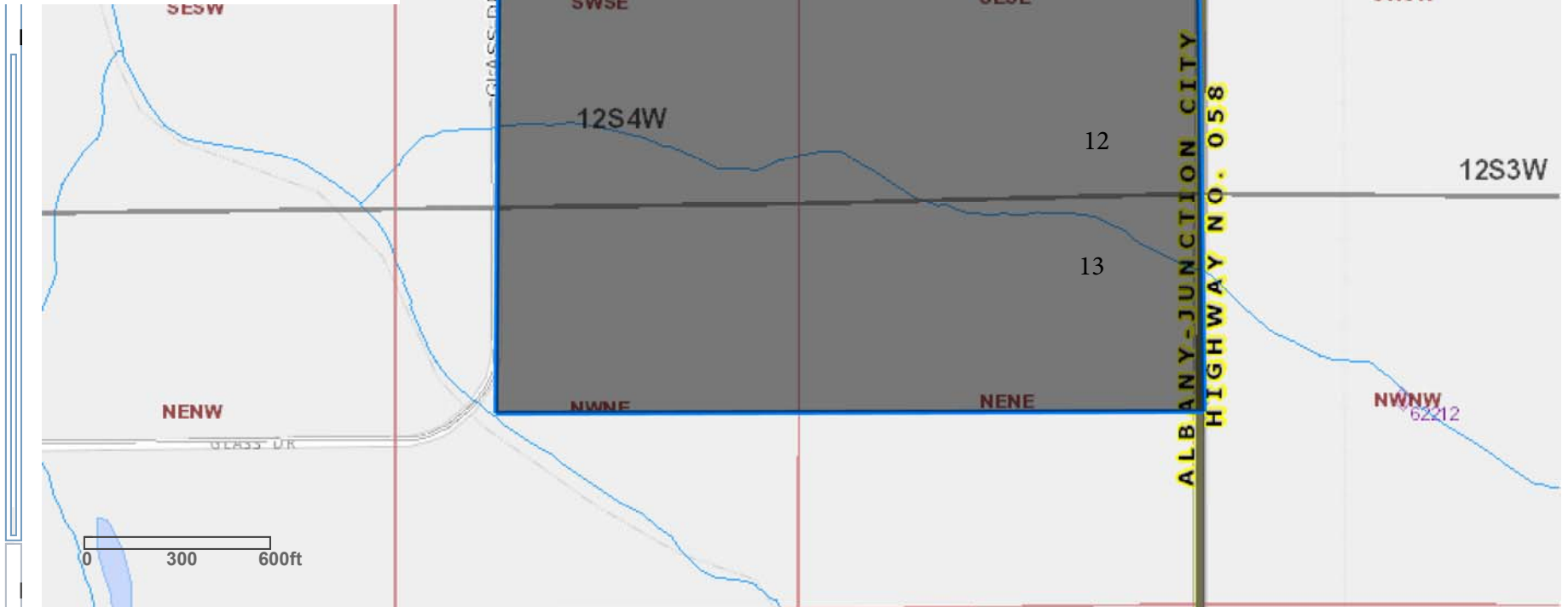
13NWNE 14.01 ACRES
13NENE 21 ACRES



Oregon Water Resources Department
Water Rights Mapping Tool



shutterstock · 9704932



Map 5 - Byron's 80

12S4W12 LOT 1400
TOTAL 94.93 ACRES
64.93 New Irrigation Acres

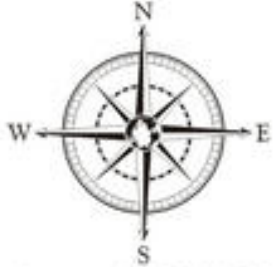
NWSE 40 ACRES
SESE 7.93

SWSE 10 ACRES

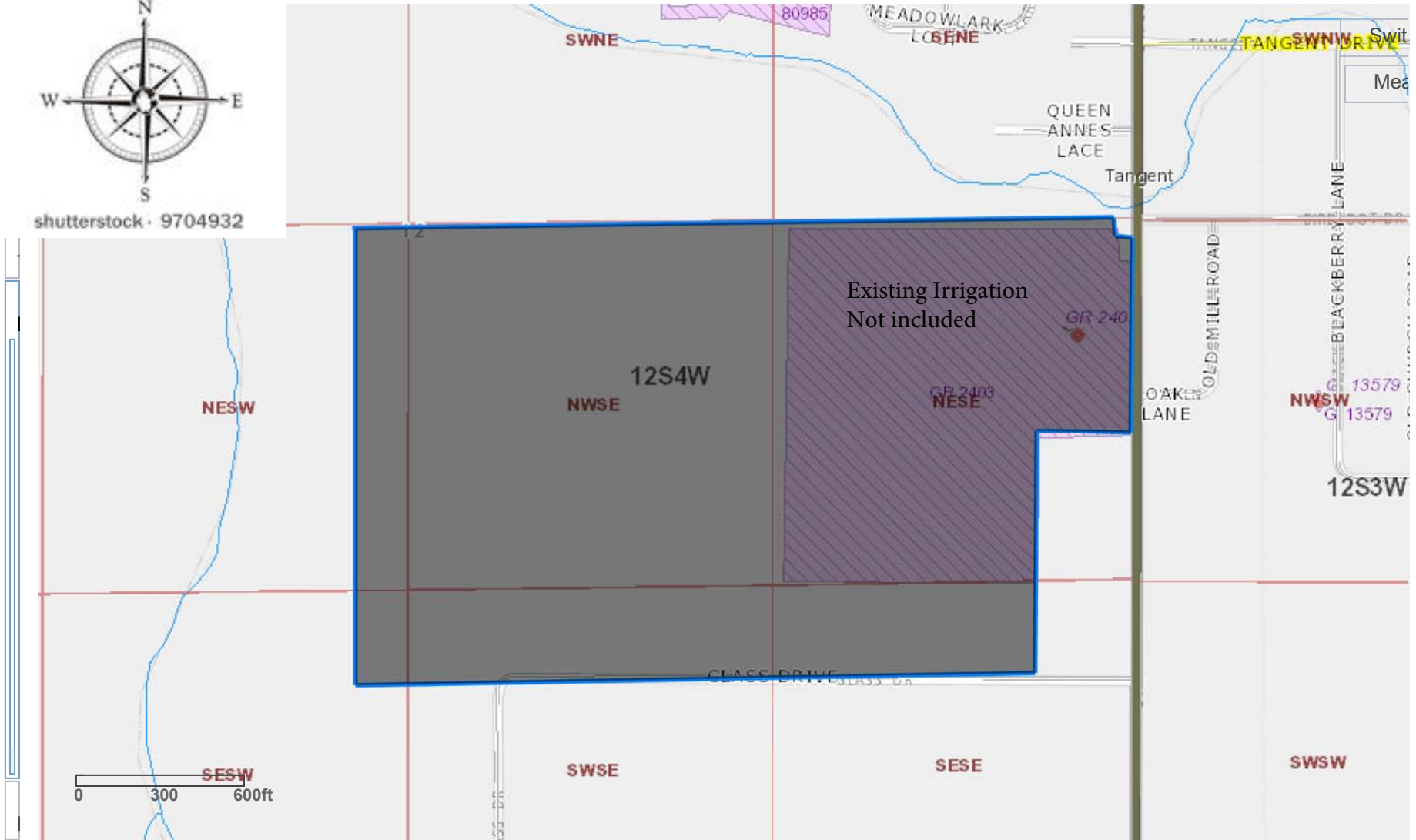
NESW 5 ACRES
SESW 2 ACRES



Oregon Water Resources Department
Water Rights Mapping Tool



shutterstock · 9704932



Map 6 - Harrison

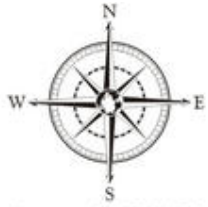
12S4W13 LOT 200
TOTAL 94.24 ACRES

NWNW 18.24 ACRES
NENW 17.8 ACRES

SWNW 29.10 ACRES
SENW 29.10 ACRES



Oregon Water Resources Department
Water Rights Mapping Tool



shutterstock · 9704932



Map 7 - Gatchel Glass Drive

12S4W14 LOT 100
TOTAL 161.72 ACRES

NENW 16.63 ACRES
NWNE 40 ACRES

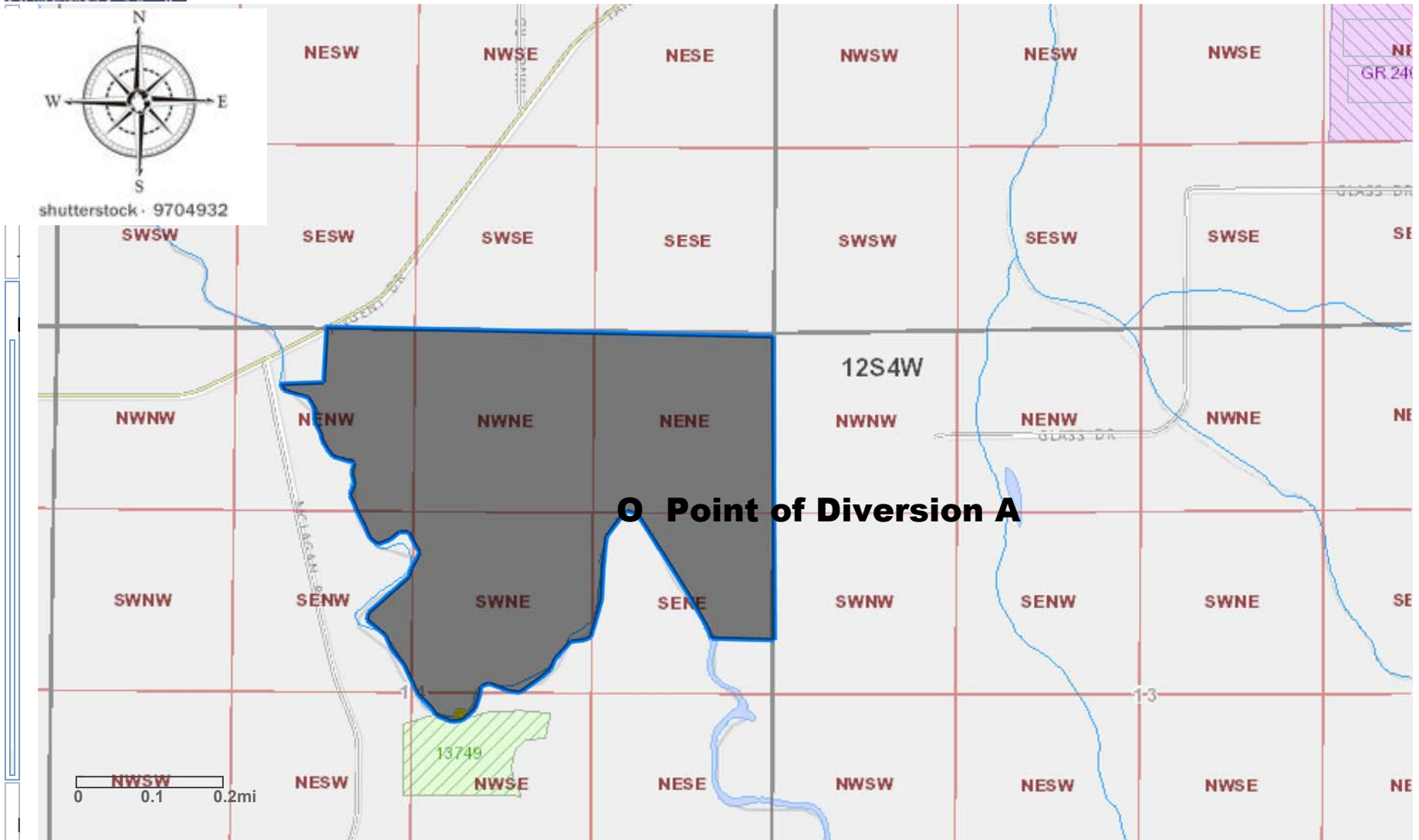
NENE 40 ACRES
SENE 9 ACRES

SWNE 36 ACRES
SENE 20.09 ACRES



Oregon Water Resources Department
Water Rights Mapping Tool

O = Point of Diversion A, 12s4w14: 1275 Feet South and 1075 Feet West from the NE Corner of Section 14



Map 8- Gatchel Bottom/S

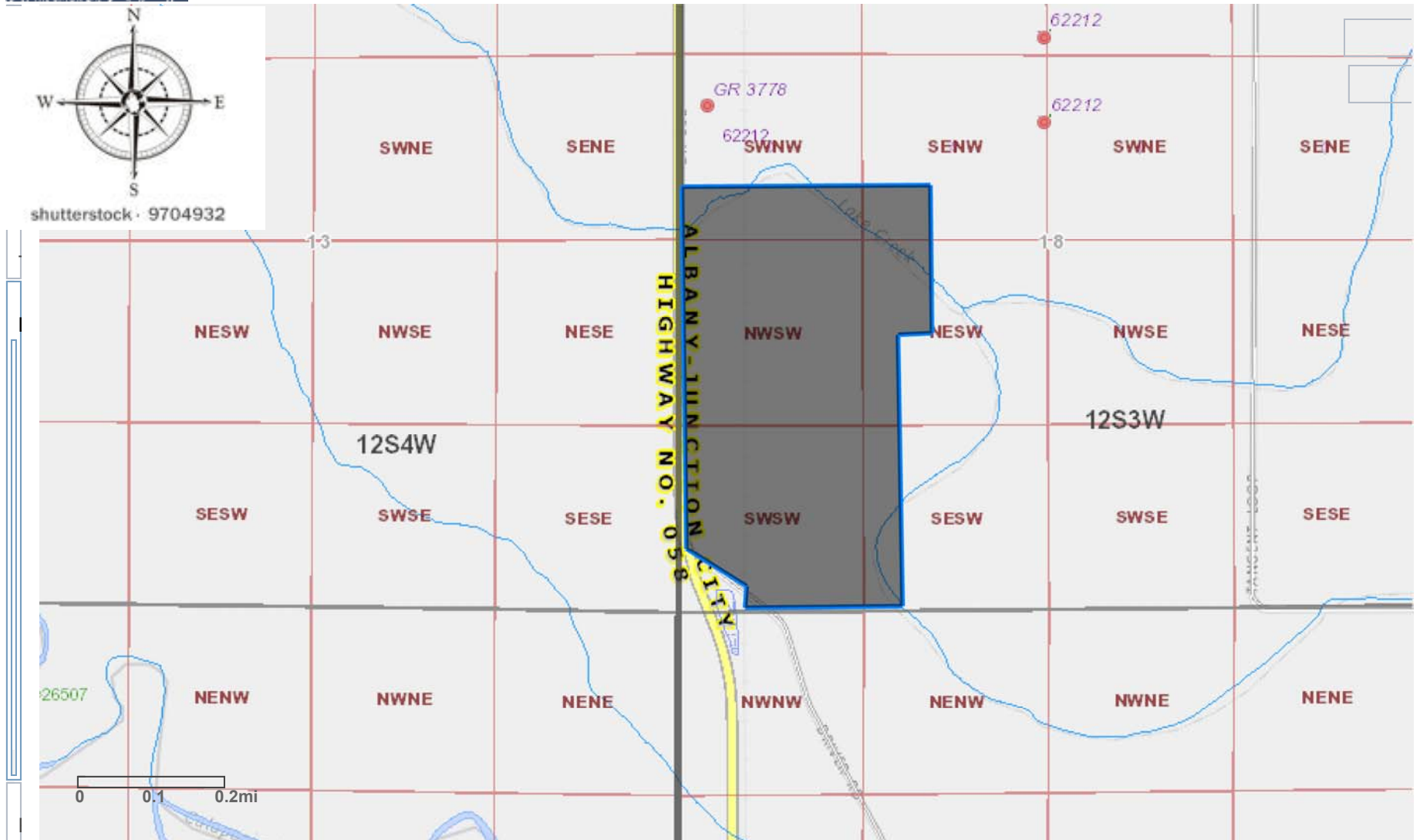
12S3W18 LOT 400
TOTAL 105.02 ACRES

SWNW 9.02 ACRES NWSW 40 ACRES
SESW 2 ACRES NESW 11 ACRES

SWSW 38 ACRES
SESW 5 ACRES



Oregon Water Resources Department
Water Rights Mapping Tool



Map 9 - Byron RR Field

12S3W19 and 20 LOT 100
TOTAL 254.39 ACRES

19NWNW 20.39 ACRES
20NWSW 7 ACRES
20SWNW 11 ACRES

19NWNW 38 ACRES
19NENW 22 ACRES

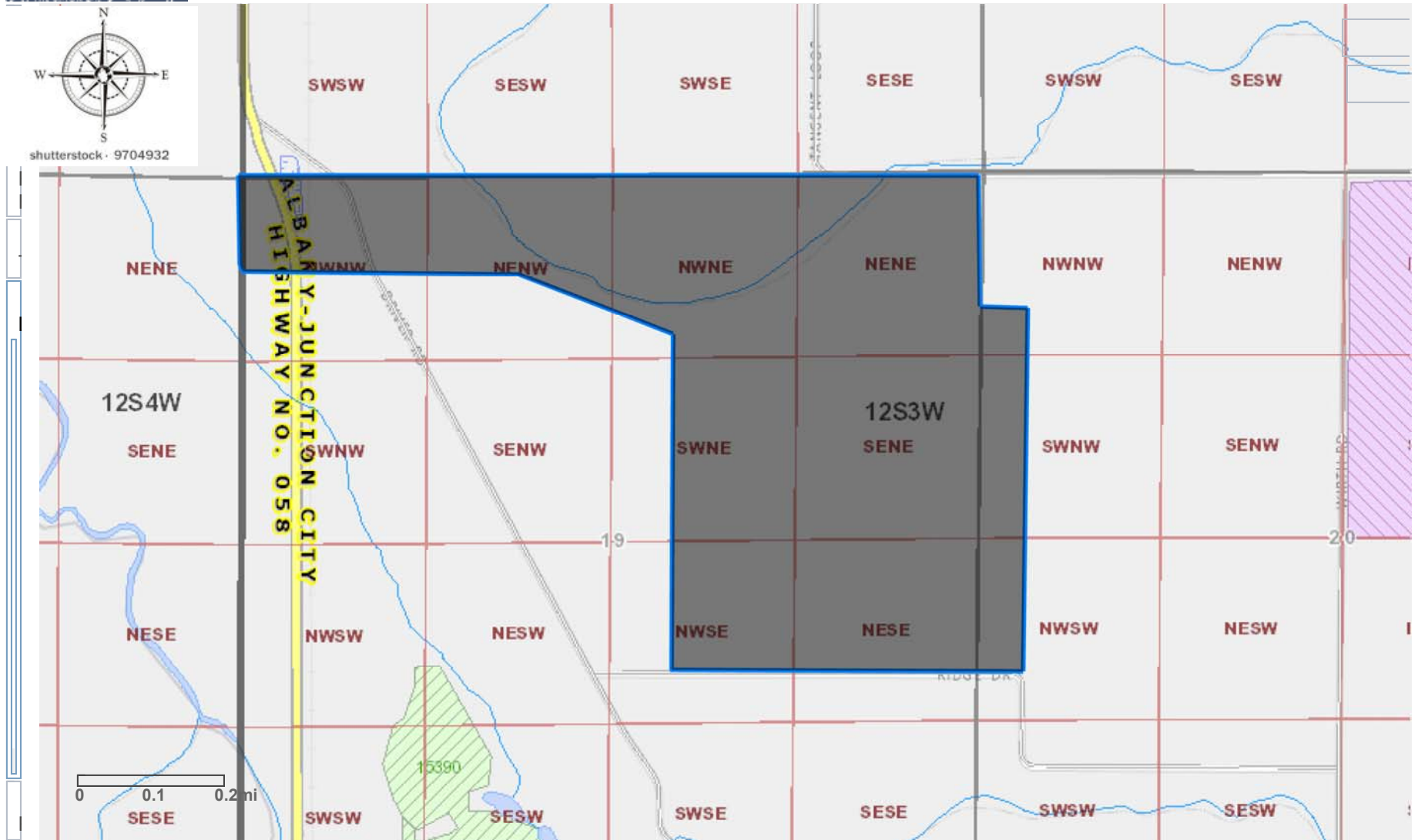
19SWNE 26 ACRES
19NENE 40 ACRES

19NWSW 18 ACRES
19SESE 40 ACRES

20NWNW 2 ACRES
19NESE 30 ACRES



Oregon Water Resources Department
Water Rights Mapping Tool



Map 10 - Driver 30/180

12S3W20 LOT 201
TOTAL 169.06 ACRES

NWNW 6.74 ACRES
SWNW 29 ACRES

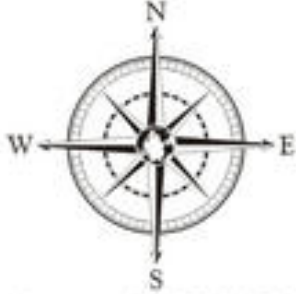
NWSW 29 ACRES
SWSW 6 ACRES

NENW 10 ACRES
SENW 38.32 ACRES

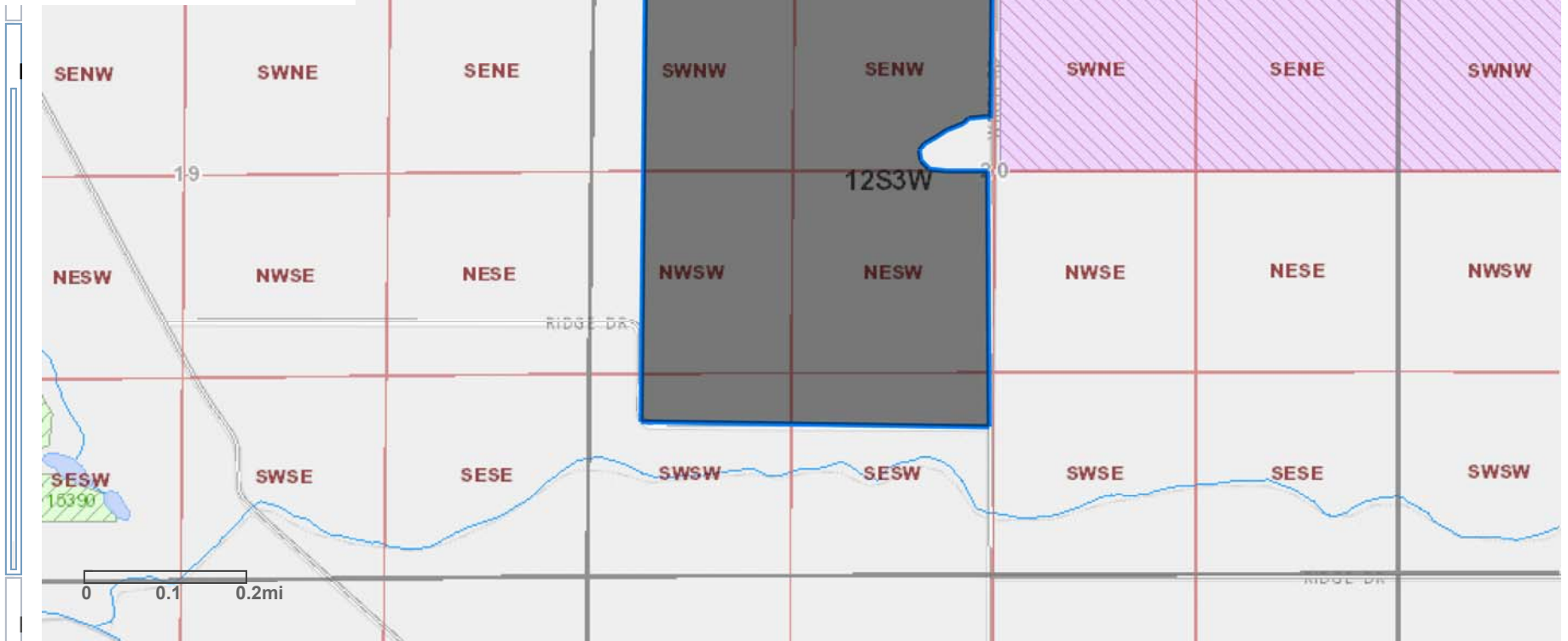
NESW 40 ACRES
SESW 10 ACRES



Oregon Water Resources Department
Water Rights Mapping Tool



shutterstock · 9704932



Map 11 - Archibald

12S4W19 AND 24 LOT 100

24SWSE 5 ACRES

24SWSW.5 ACRES

24NENE 33.5 ACRES

24SWNE 3.62 ACRES

TOTAL 97.62 ACRES

24SESE 11.67 ACRES

24NWNE 14 ACRES

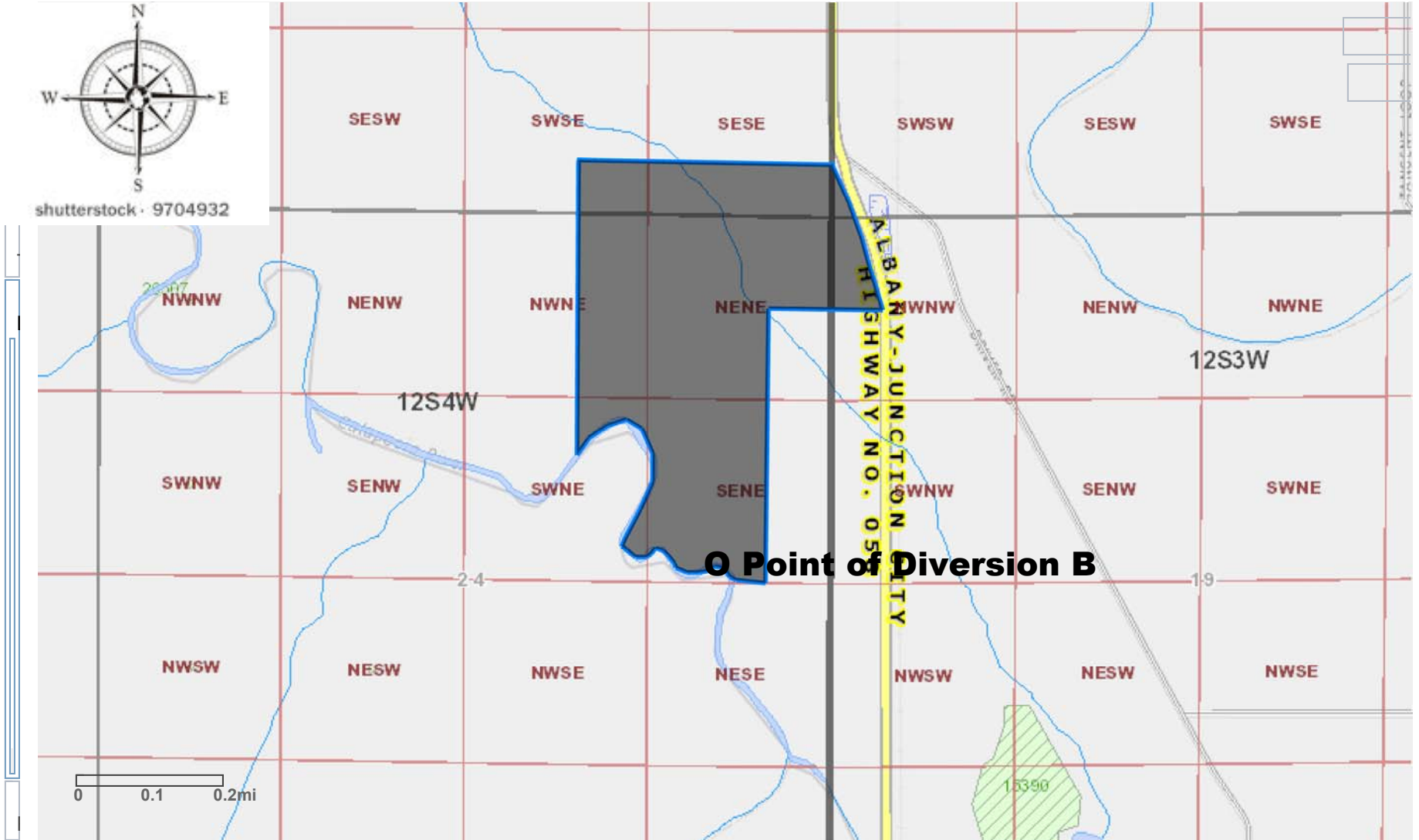
19NWNW 3.33 ACRES

24SENE 26 ACRES



Oregon Water Resources Department
Water Rights Mapping Tool

O = Point of Diversion B, 12s4w24: 2500 Feet South and 1000 Feet West from the NE Corner of Section 24



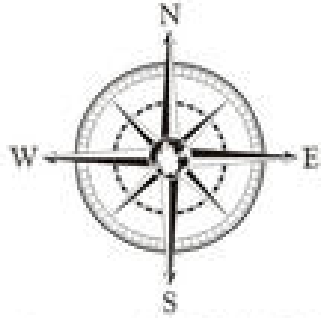
Map 12 - Byron House/Trees

12S3W20 LOT 400
TOTAL 156.36 ACRES

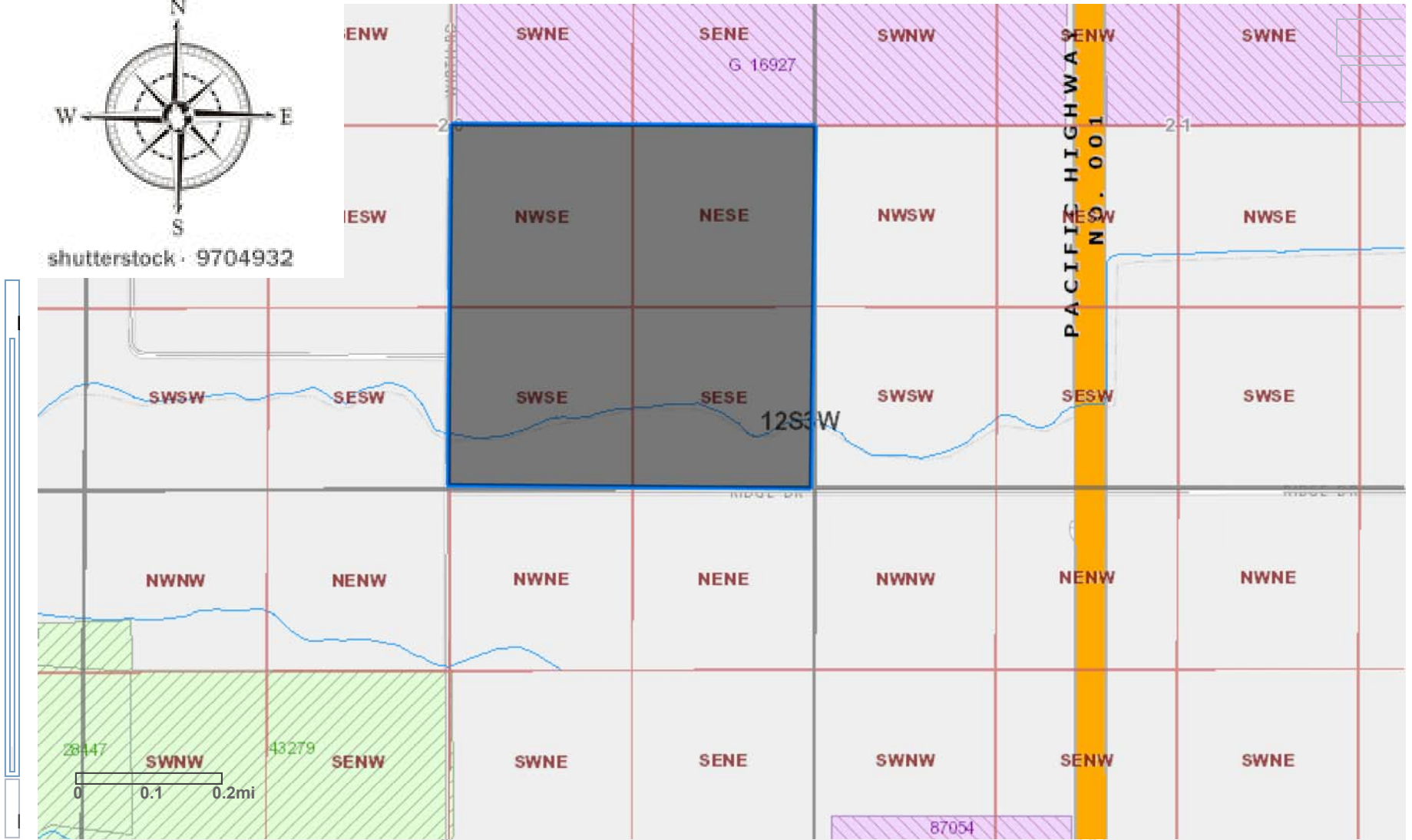
NWSE 38.18 ACRES SWSE 38.18 ACRES
NESE 40 ACRES SESE 40 ACRES



Oregon Water Resources Department
Water Rights Mapping Tool



shutterstock · 9704932



Map 13 - Ropp Lelia

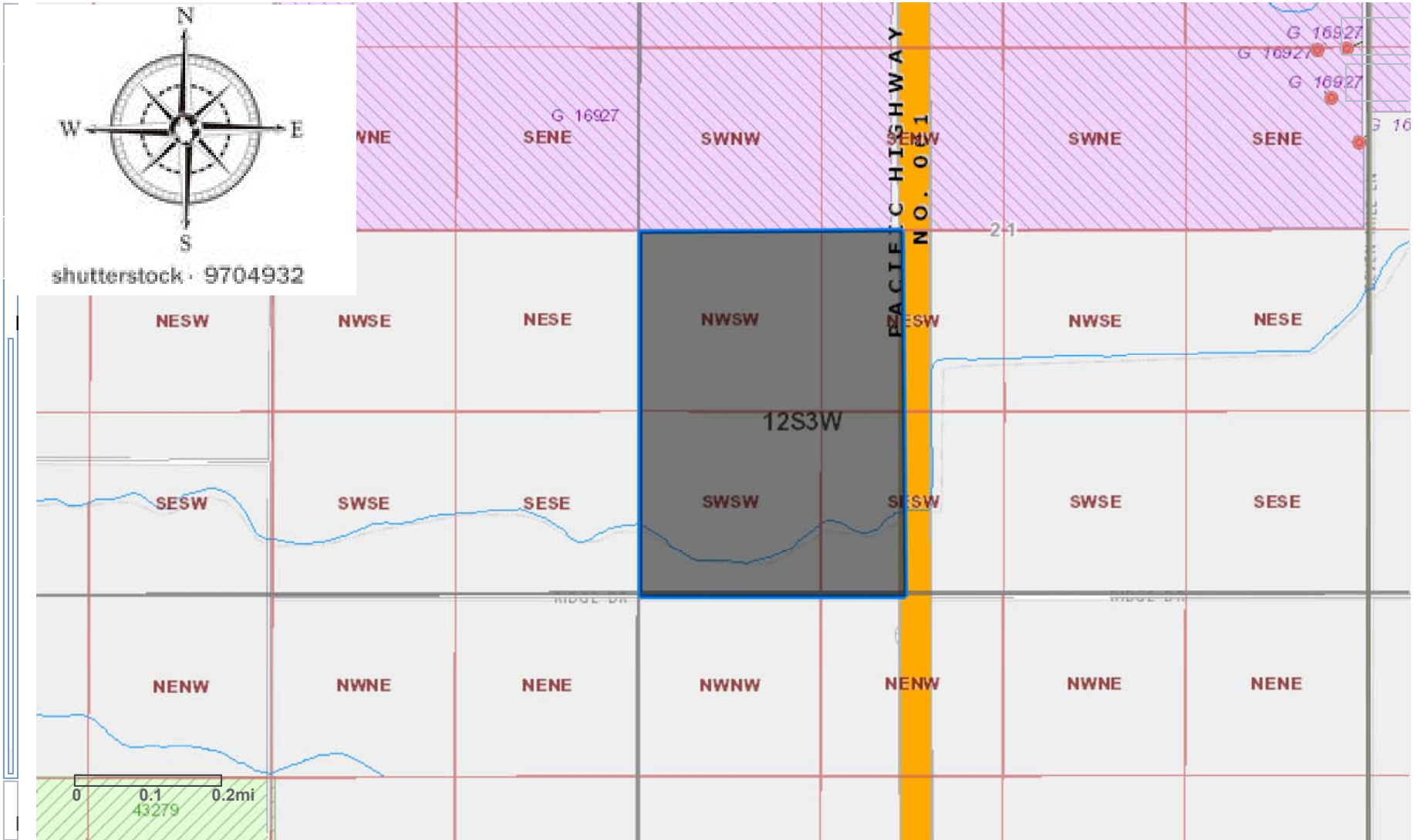
12S3W21 LOT 301
TOTAL 110.03 ACRES

NWSW 40 ACRES
SWSW 40 ACRES

NESW 15.03 ACRES
SESW 15 ACRES



Oregon Water Resources Department
Water Rights Mapping Tool



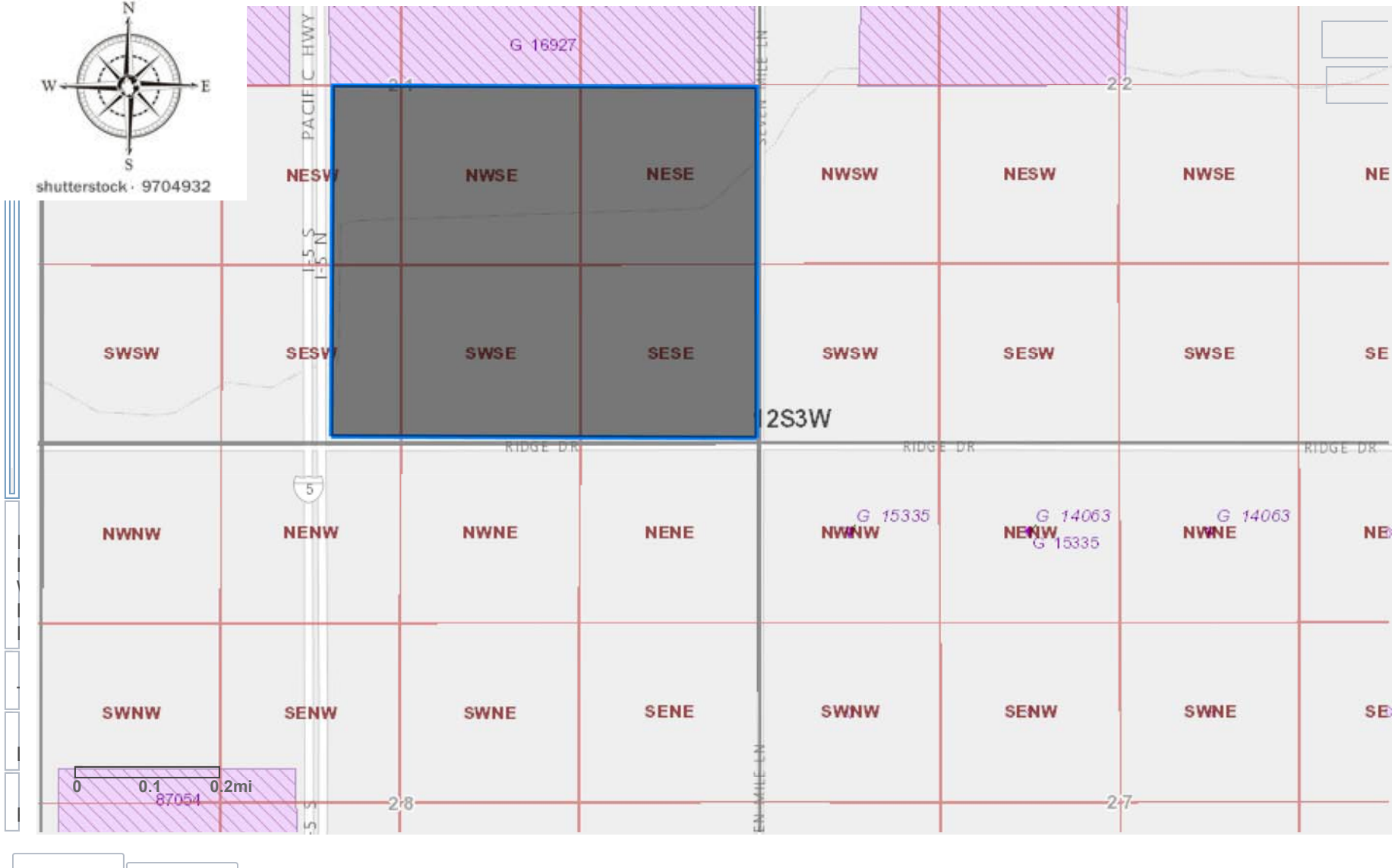
Map 14 - Ropp Lelia

12S3W21 lot 300
TOTAL 186.96 ACRES

NESW 13.48 ACRES NESE 40 ACRES SWSE 40 ACRES
NWSE 40 ACRES SESW 13.48 ACRES SESE 40 ACRES



Oregon Water Resources Department
Water Rights Mapping Tool



Map 15- Ropp NE/SE

12S3W28 LOT 200
TOTAL 141.15 ACRES

NWNW 35 ACRES
SWNW 29 ACRES

NENW 40 ACRES
SENW 22.15 ACRES

NWNE 9 ACRES
SWNE 6 ACRES



Oregon Water Resources Department
Water Rights Mapping Tool



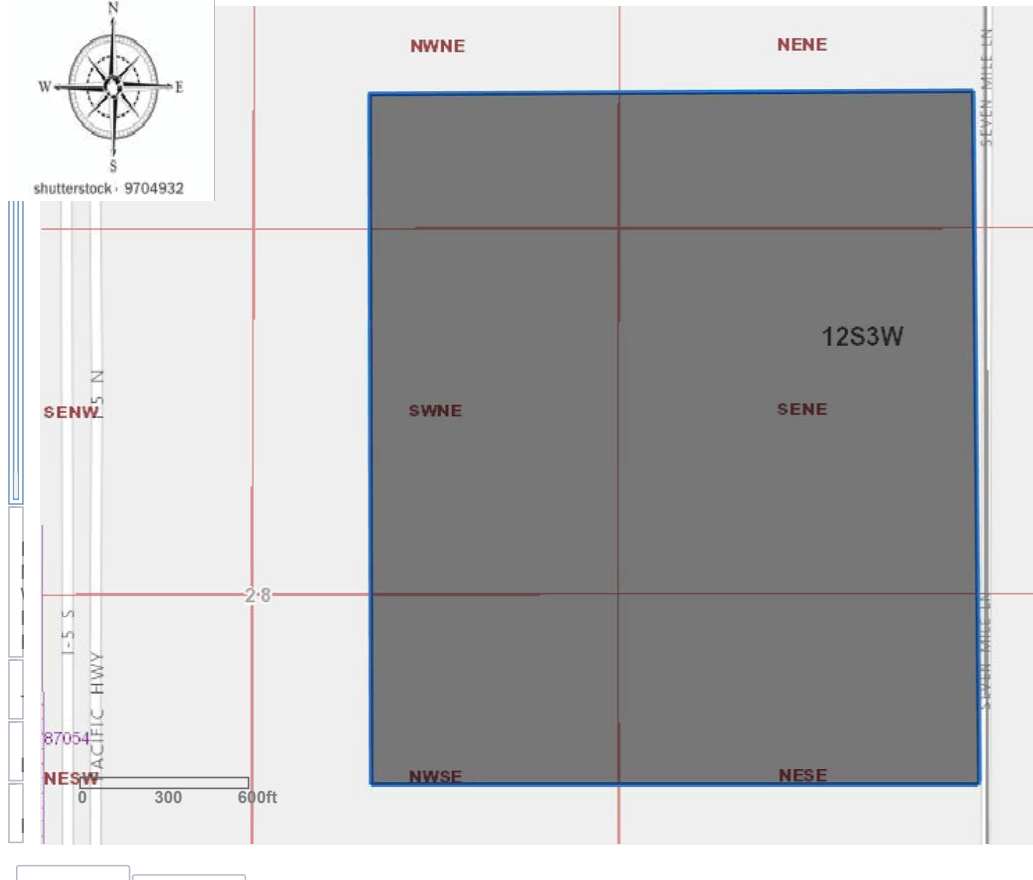
Map 16- 36/39 Kalina W/E

12S3W28 LOT 700
TOTAL 126.46 ACRES

NWNE 10.23 ACRES NENE 20 ACRES SWNE 27 ACRES SENE 40 ACRES
NWSE 10 ACRES NESE 19.23 ACRES



Oregon Water Resources Department
Water Rights Mapping Tool User Guide



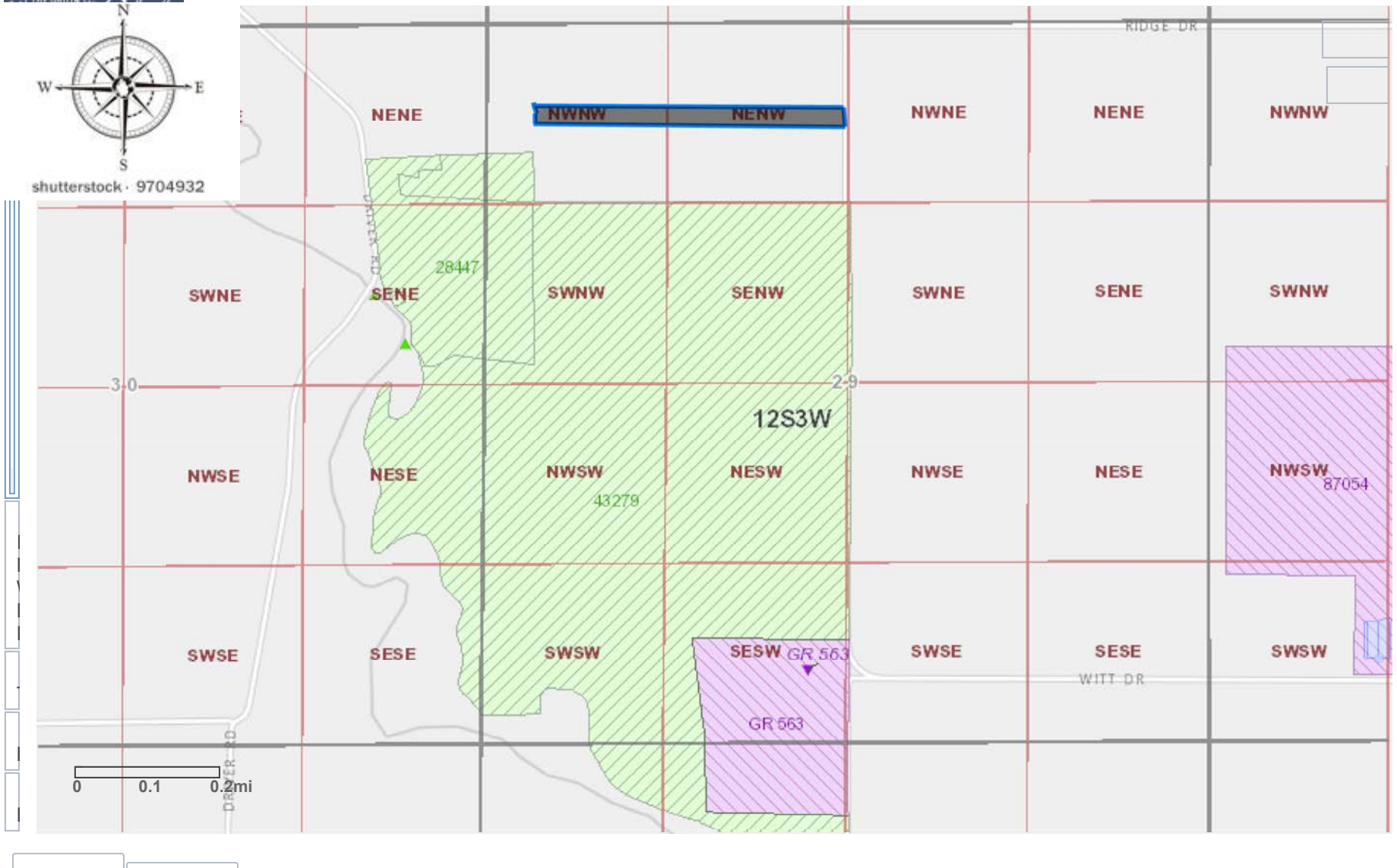
MAP 17 - Seven Mile and Ridge Rd

12S3W20 LOT 301
TOTAL 5.73 ACRES

NWNW 2.23 ACRES
NENW 3.5 ACRES



Oregon Water Resources Department
Water Rights Mapping Tool



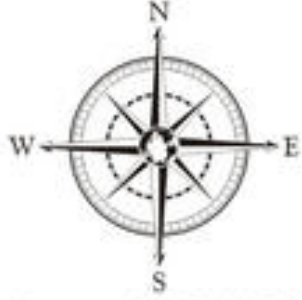
Map 18 - 41 Florida 115

12S3W29 LOT 400
TOTAL 33.29 ACRES

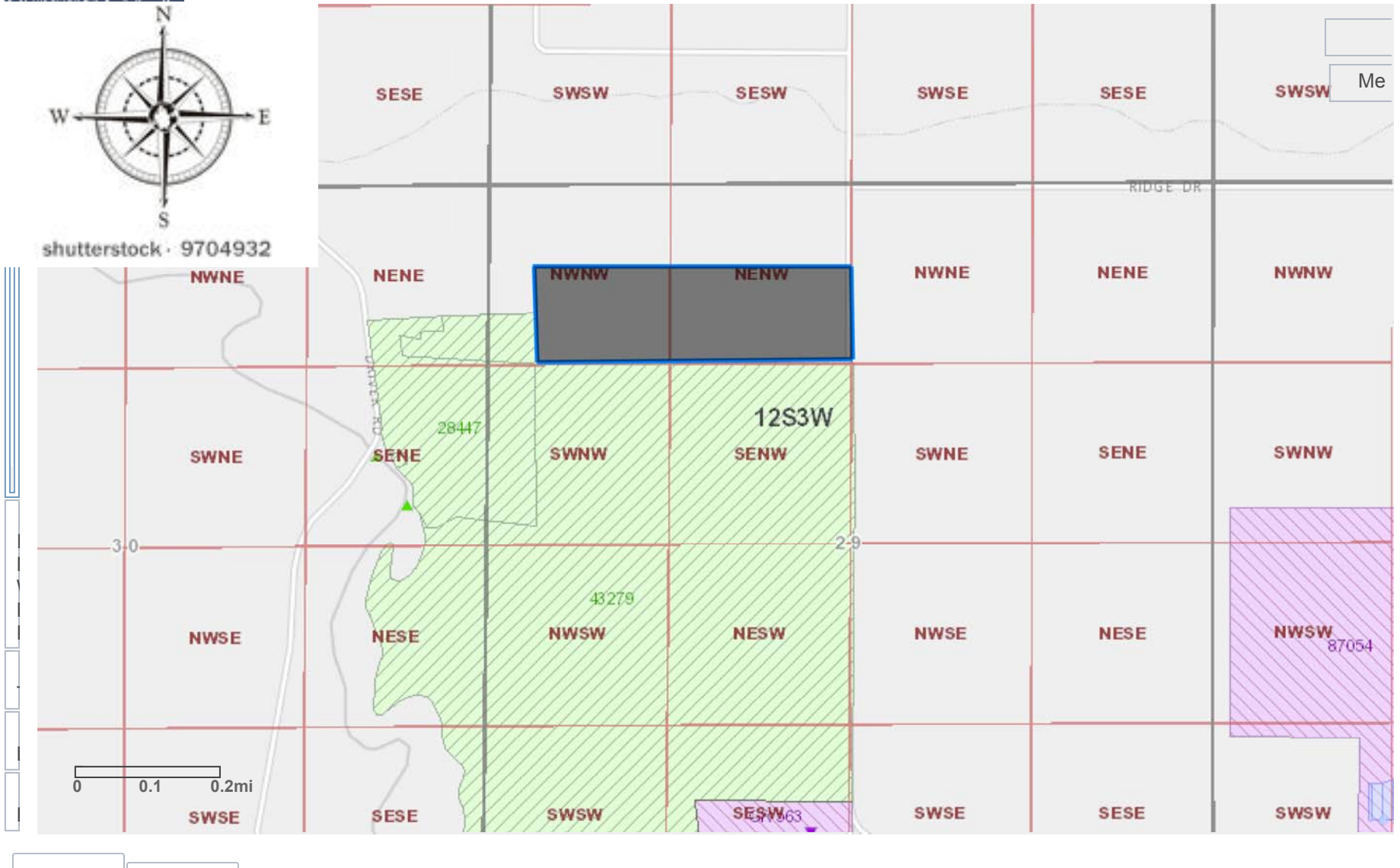
NWNW 13.29 ACRES
NENW 20 ACRES



Oregon Water Resources Department
Water Rights Mapping Tool



shutterstock · 9704932



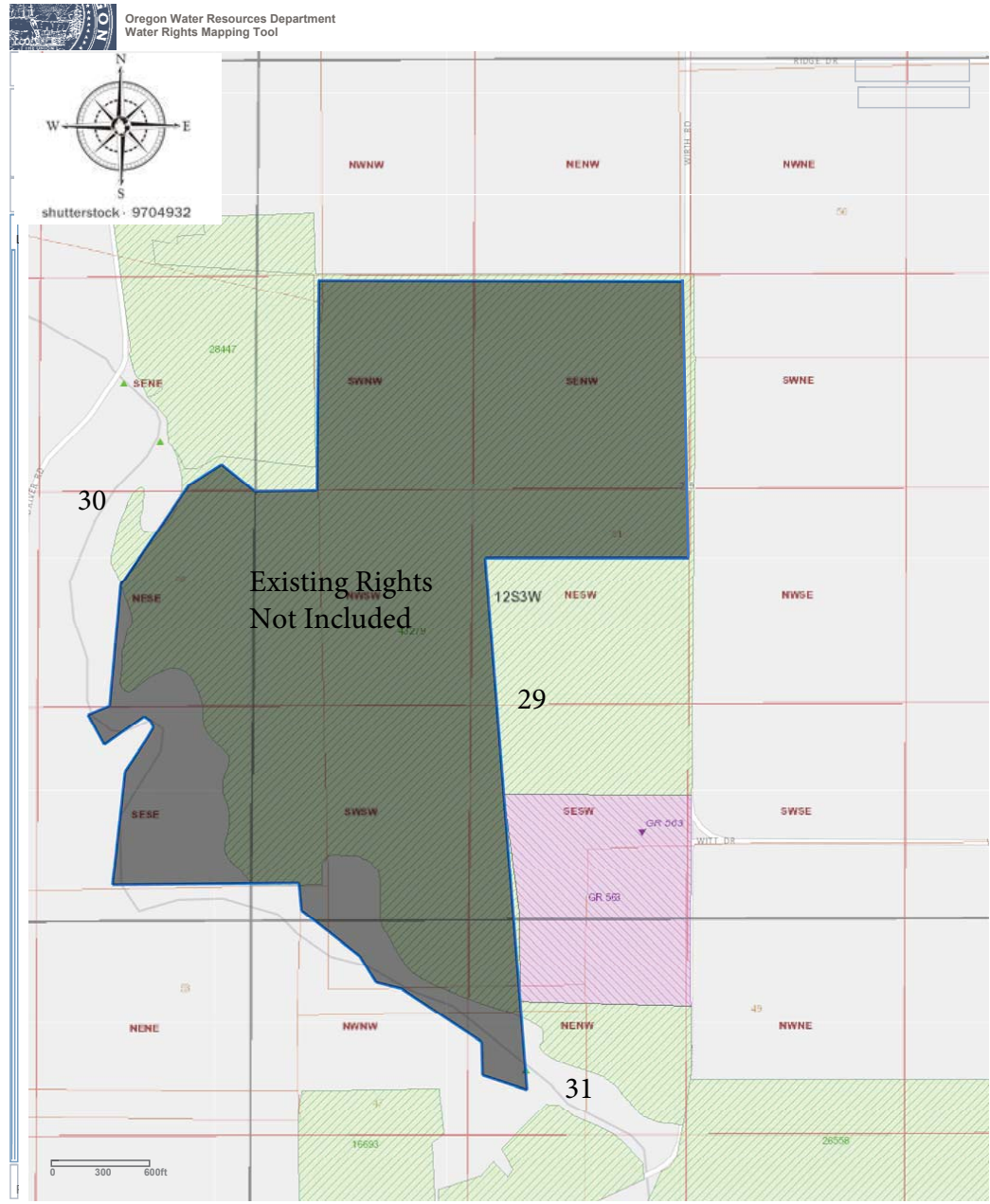
Map 19 - 41 Florida 115

30NESE 3 ACRES 29SWSW 3 ACRES 29SENW 3 ACRES 30SESE 20 ACRES 31NWNW 3 ACRES 31NENW 3 ACRES

12S3W29, 30, and 31 LOT 500

TOTAL 224 ACRES

35 New Acres



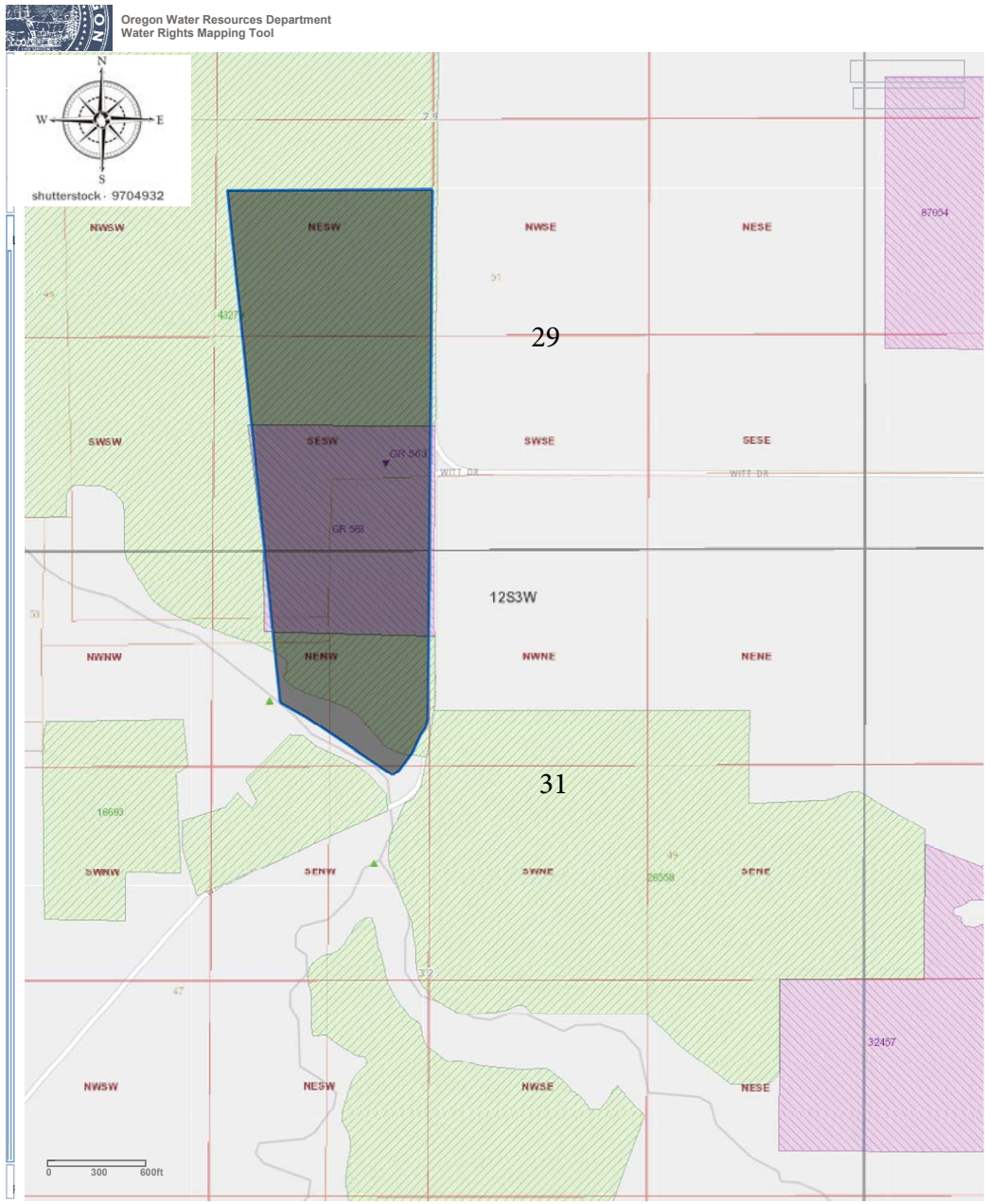
Map 20 - 42/43/46 Calley

12S3W29 and 31 LOT 502

29NESW 25.6 ACRES 31NENW 13.61 ACRES 29SESW 13.4 ACRES

TOTAL 83.61

52.61 New Acres



POD POU

Map 21 - 46 Calley

12S3W30 LOT 500
TOTAL 37.64 ACRES

SWNE .64 ACRES
SENE 7 ACRES

NWSE 6 ACRES
NESE 7 ACRES

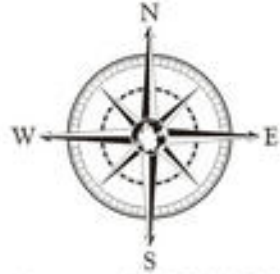
SWSE 8 ACRES
SESE 9 ACRES



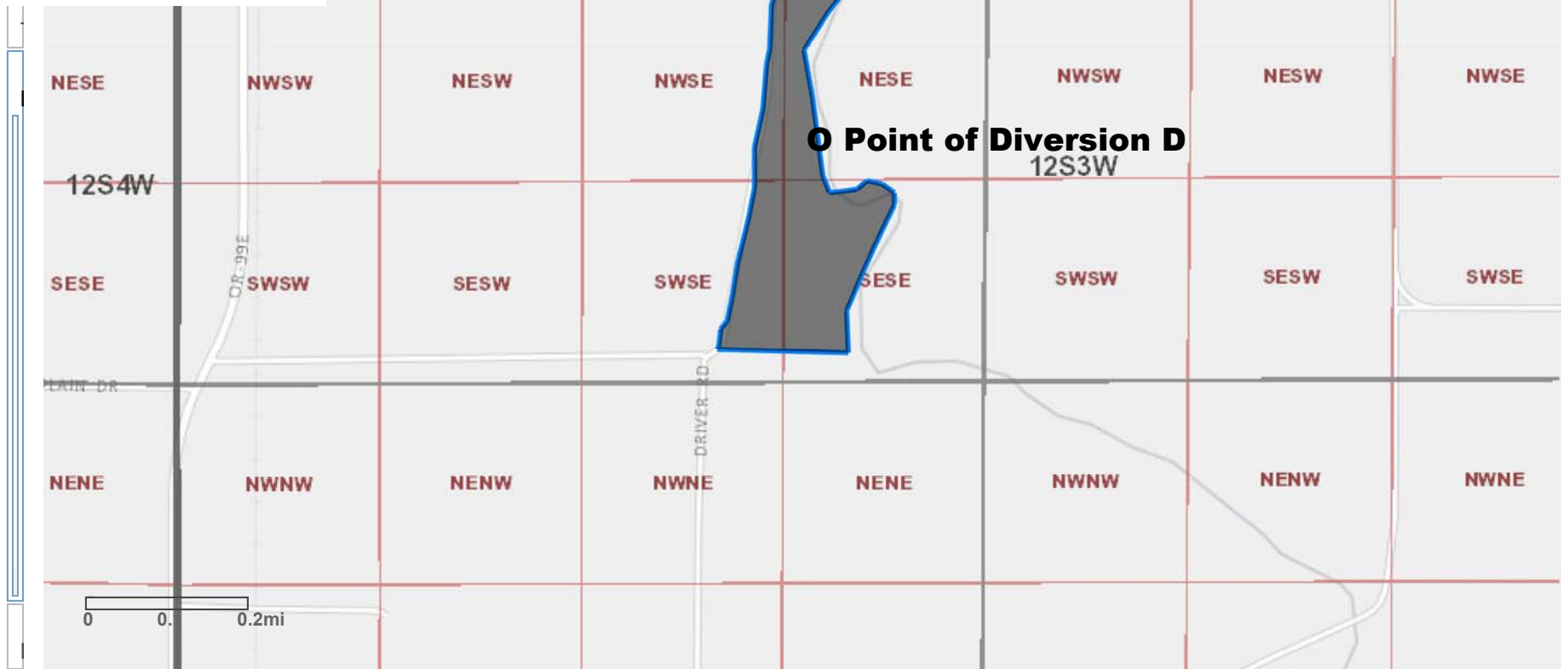
Oregon Water Resources Department
Water Rights Mapping Tool

**O = Point of Diversion C, 12s3w30: 1800 Feet South
and 600 Feet West from the NE corner of Section 30**

**O = Point of Diversion D, 12s3w30: 3900 Feet South
and 1250 Feet West from the NE corner of Section 30**



shutterstock · 9704932



Map 22 - 48 Berger

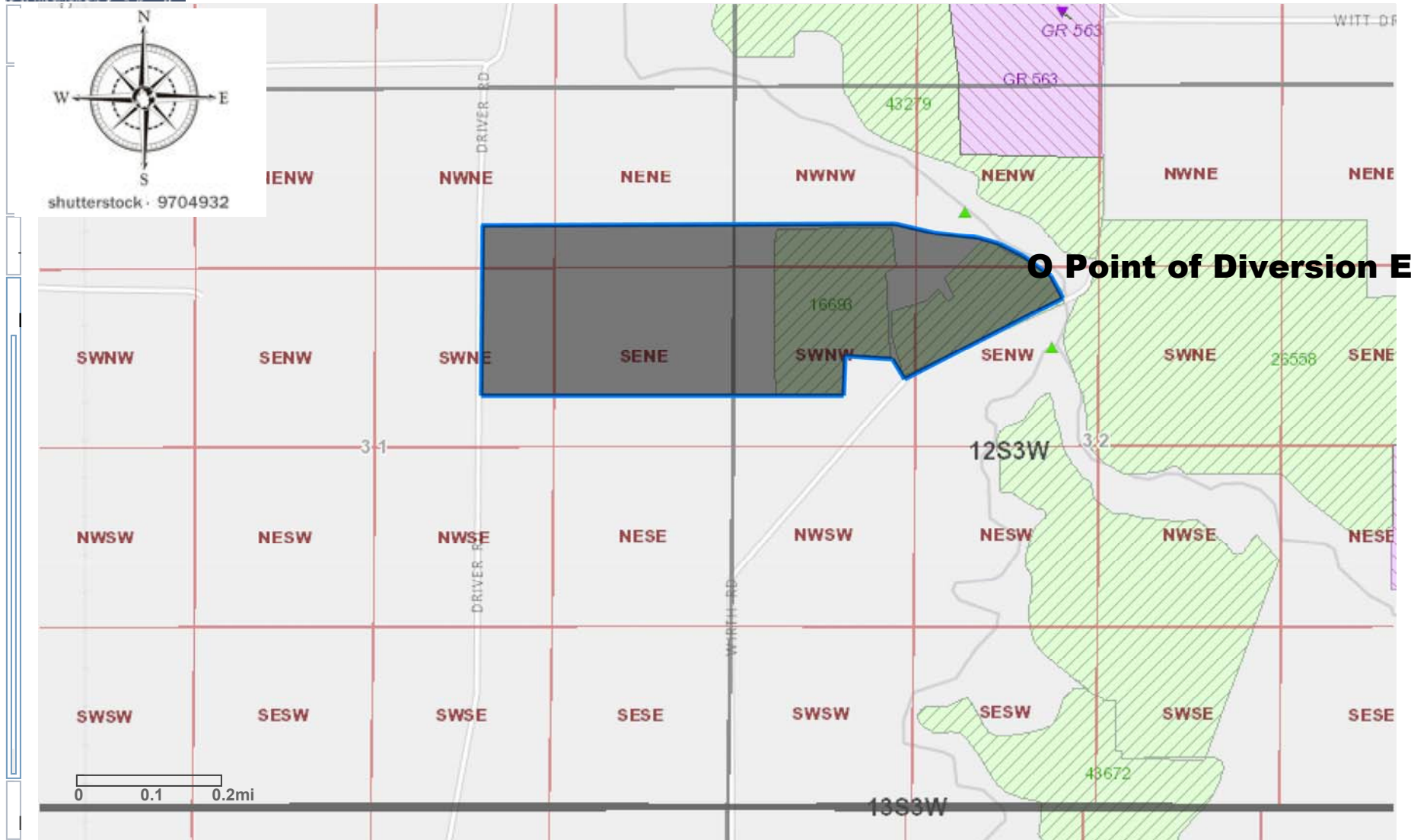
12S3W31 and 32 LOT 401 31NWNE 3 ACRES 31NENE 11 ACRES 31SWNE 9 ACRES 31SENE 31 ACRES 32NENW12.54 ACRES

TOTAL 103.94 ACRES 73.94 New Acres 32SENE .9 ACRES 32NWNW 1.5 ACRES 32SWNW 5 ACRES



Oregon Water Resources Department
Water Rights Mapping Tool

O = Point of Diversion E, 12s3w31: 1320 Feet South and 2000 Feet East from the NE Center of Section 31



Map 23 - 49/50 Hawkins

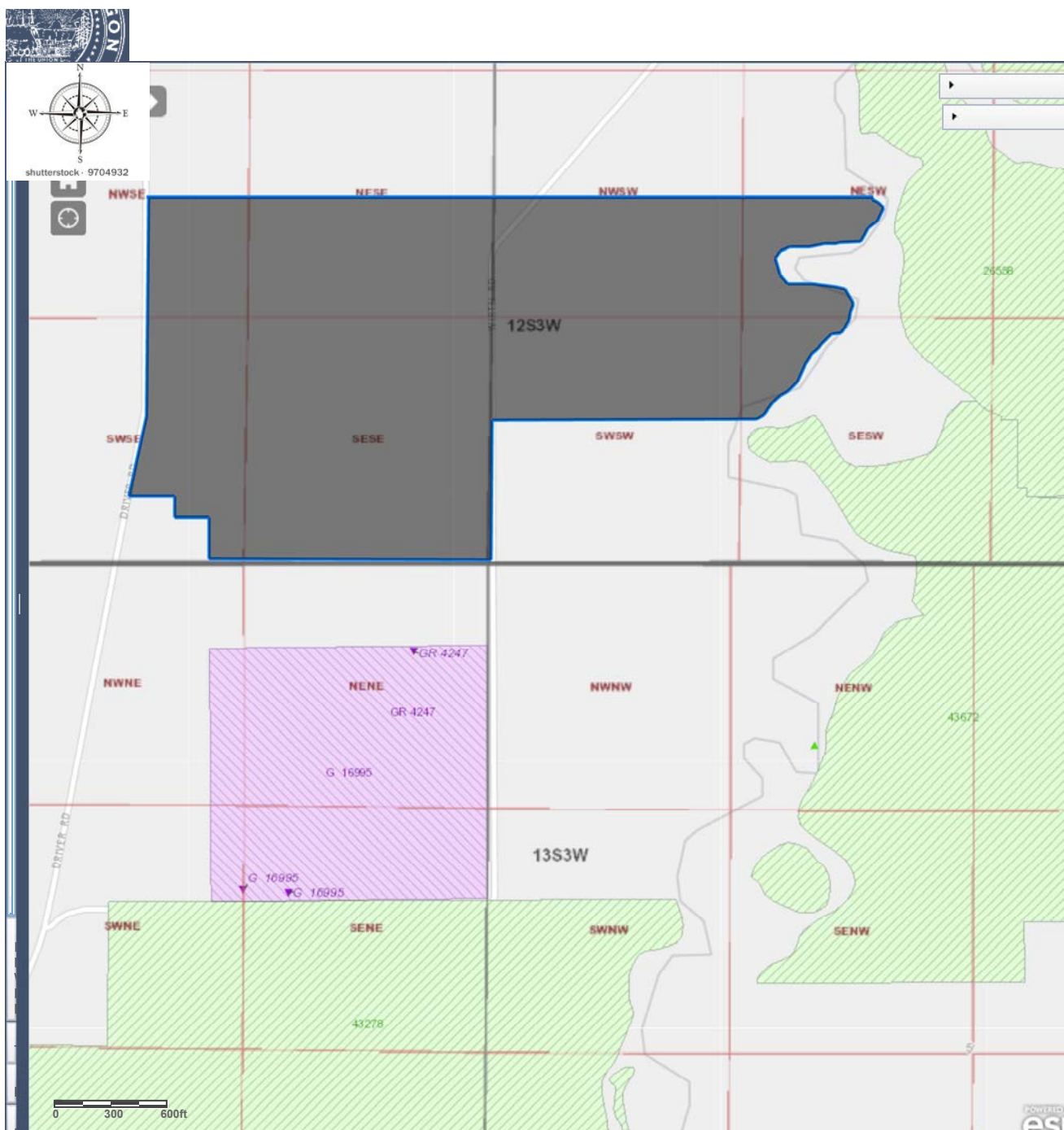
12S3W31 and 32 LOT 600
TOTAL 131.75 ACRES

31NWSE 8 ACRES
31SWSE 10 ACRES

31NESE 23 ACRES
31SESE 40 ACRES

32NWSW 23 ACRES
32SWSW 15 ACRES

32NESW 7 ACRES
32SESW 5.74 ACRES



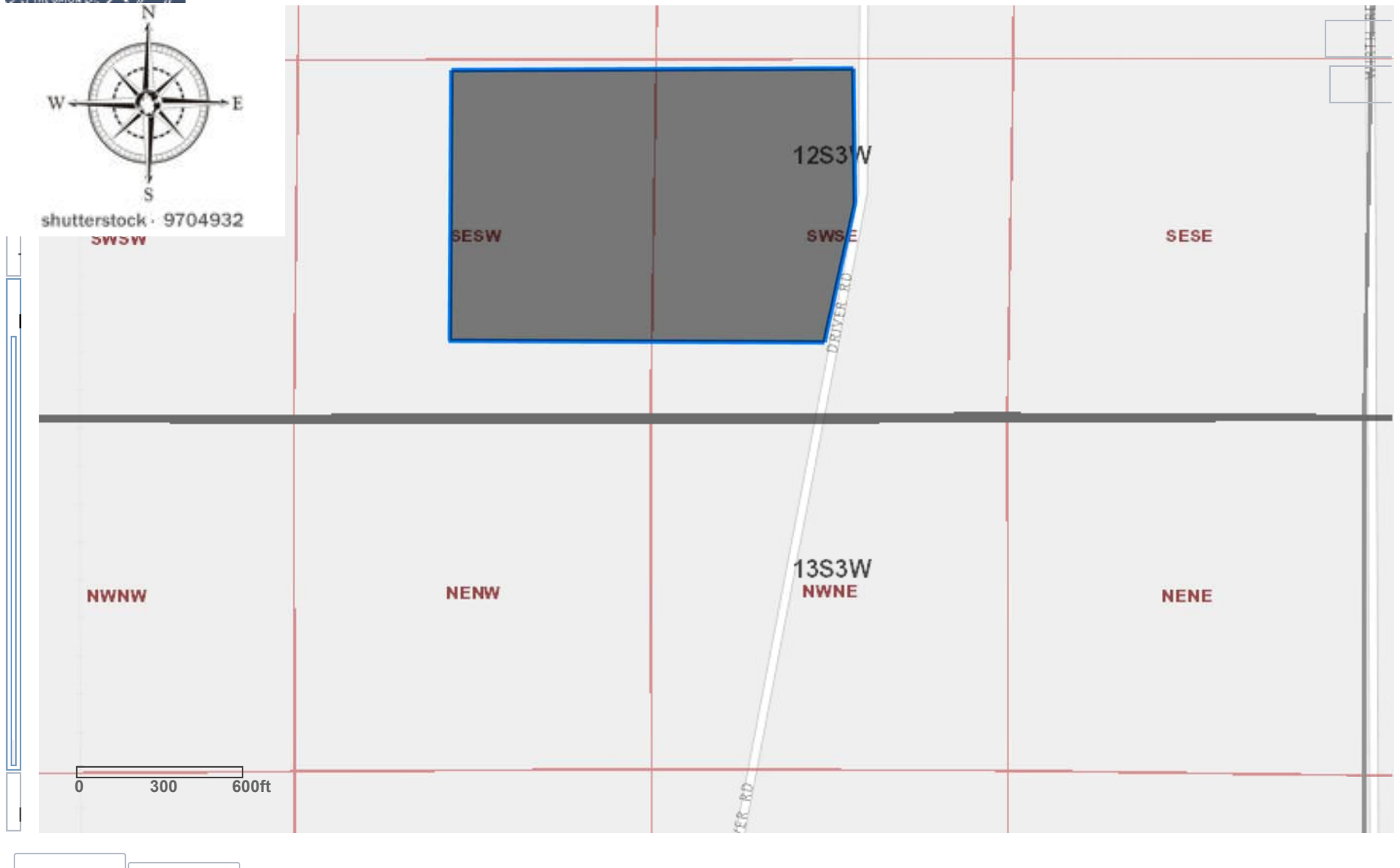
Map 24 - 56/57 Herrling/Lisa

12S3W31 LOT 601
TOTAL 32.27 ACRES

SESW 16.27 ACRES SWSE 16 ACRES



Oregon Water Resources Department
Water Rights Mapping Tool



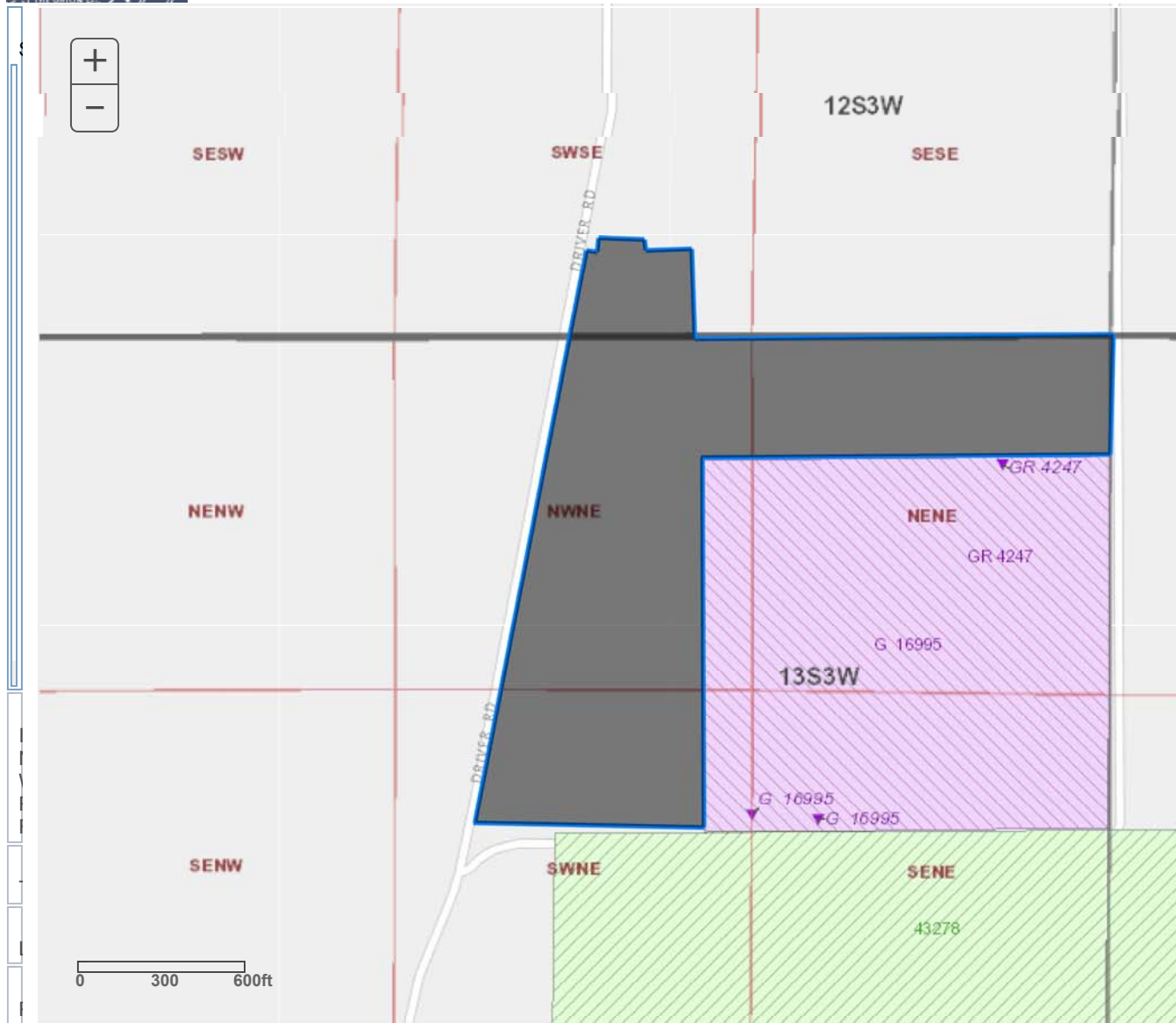
Map 25 - 54 Hick

13S3W6 and 12S3W31 LOT 1000 31SWSE 4.10 ACRES 6NWNE 18 ACRES 6NENE 10 ACRES 6SWNE 8 ACRES TOTAL 40.10 ACRES



Oregon Water Resources Department
Water Rights Mapping Tool

[User Guide](#)



Map 26- 55 Tim's Dairy

12S4W36 and 13S4W1

36SWSE 30.68 ACRES

1NWNE 18 ACRES

36SESE 38 ACRES

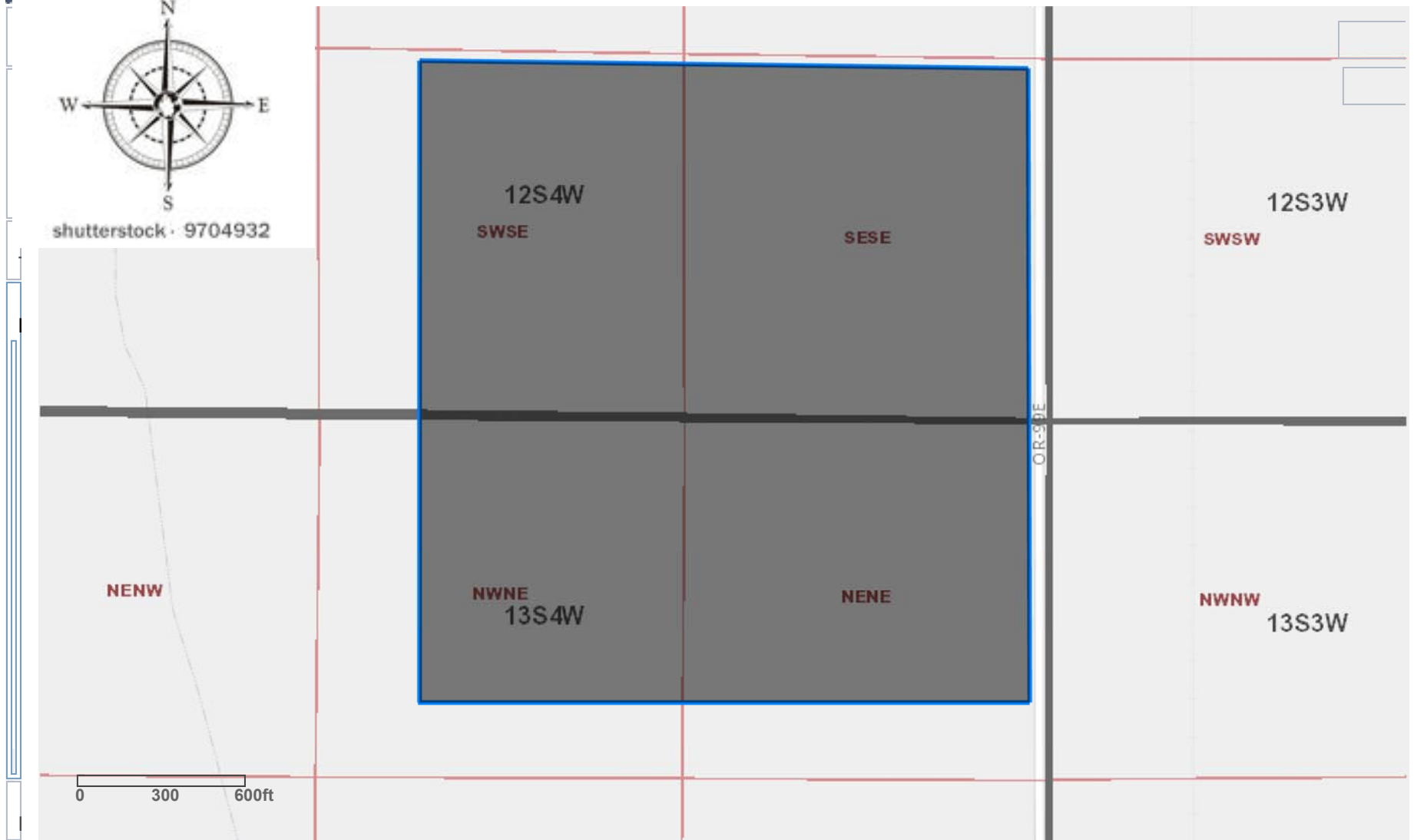
1NENE 30 ACRES

LOT 600

TOTAL 116.68 ACRES



Oregon Water Resources Department
Water Rights Mapping Tool



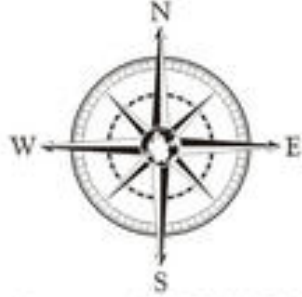
Map 27 - 52 Jenks West

12S3W31 and
13S3W6 LOT 500
TOTAL 15.58 ACRES

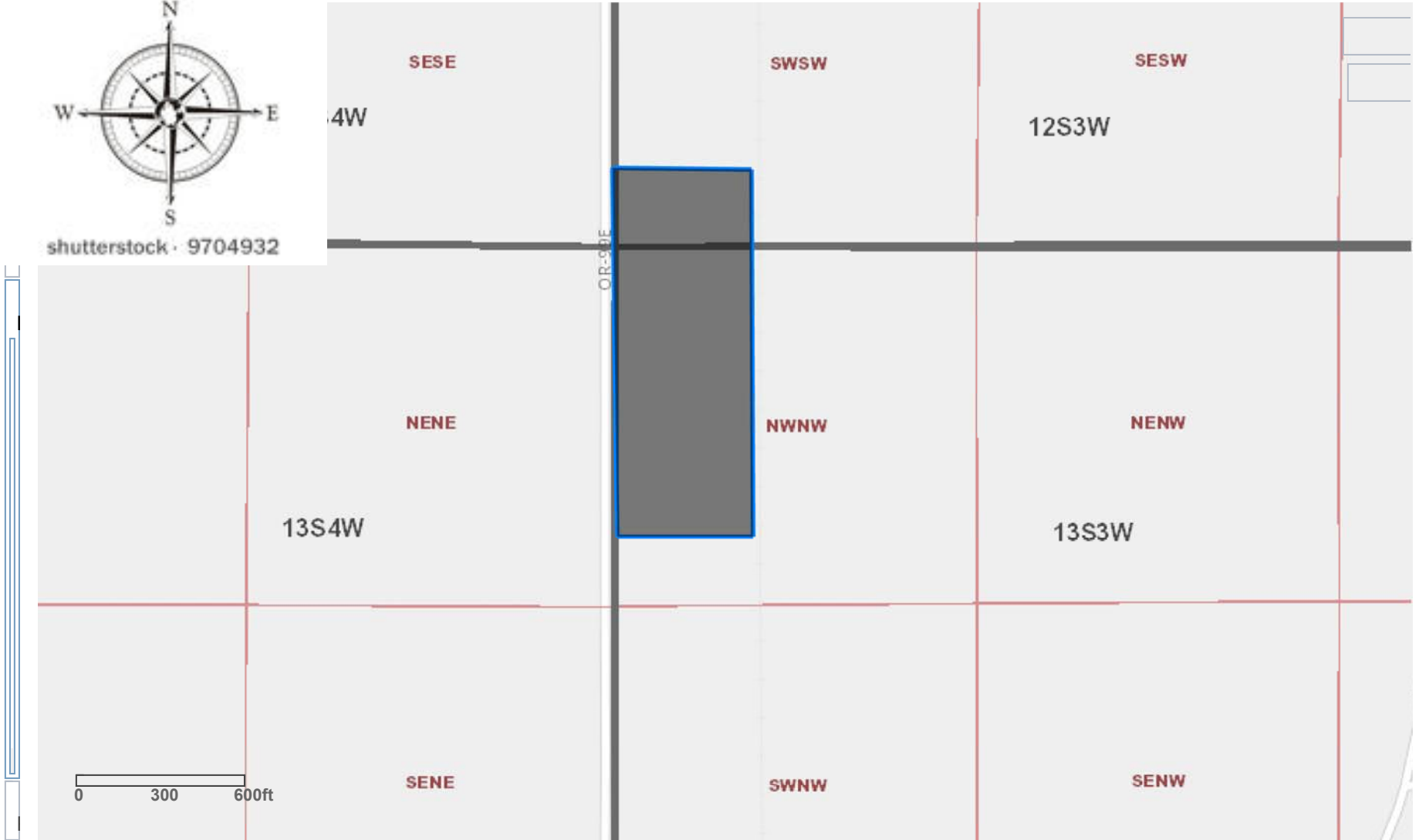
31SWSW 2 ACRES 6NWNW 13.58 ACRES



Oregon Water Resources Department
Water Rights Mapping Tool



shutterstock · 9704932



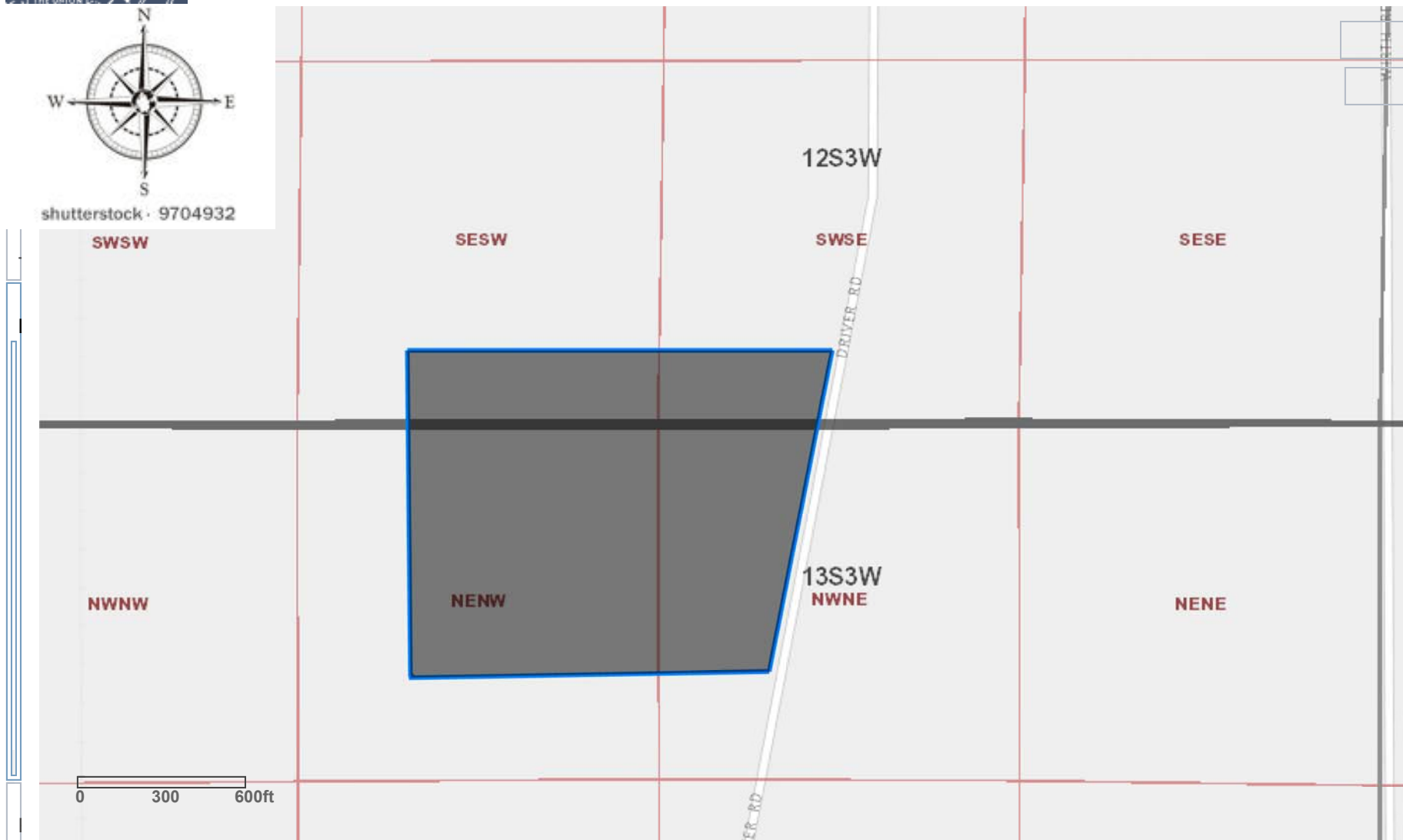
Map 28 - 53 Jenks East

12S3W31 and
13S3W6 LOT 200
TOTAL 38.18 ACRES

31SESW 8 ACRES 31SWSE 4 ACRES 6NENW 15 ACRES
6NWNE 11.18 ACRES



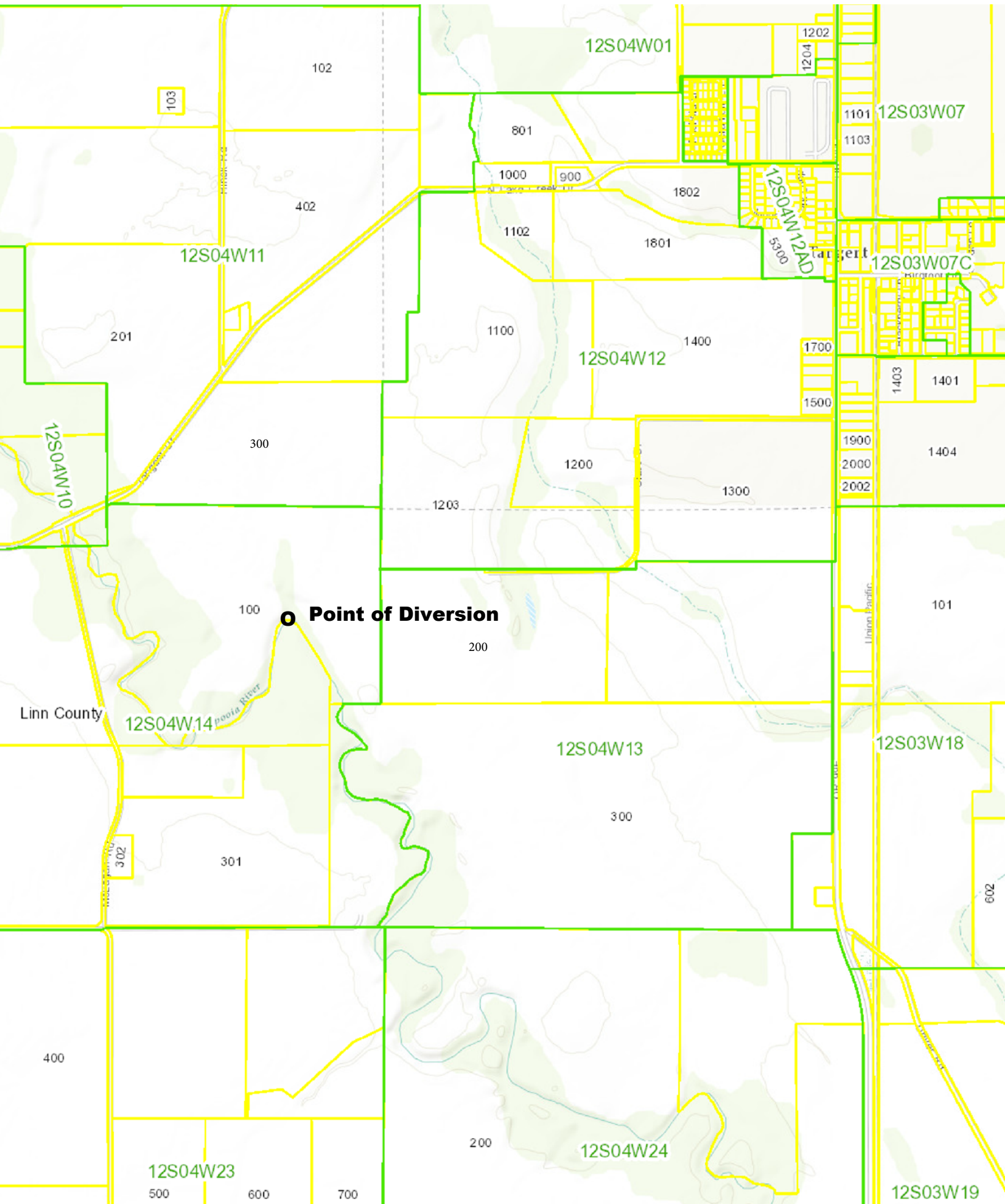
Oregon Water Resources Department
Water Rights Mapping Tool

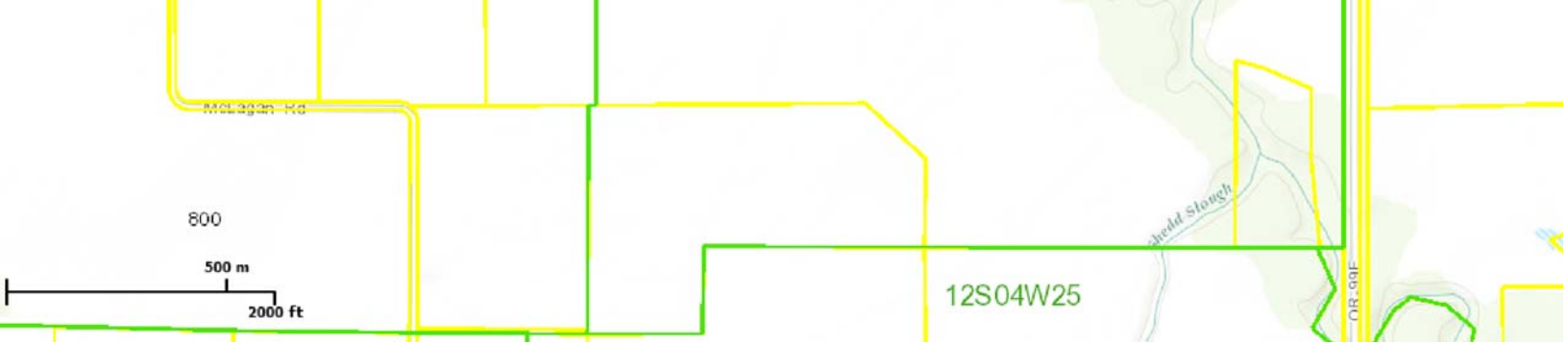


Map 29 - 73 Dixon S

The Oregon Map

Maps 1-8

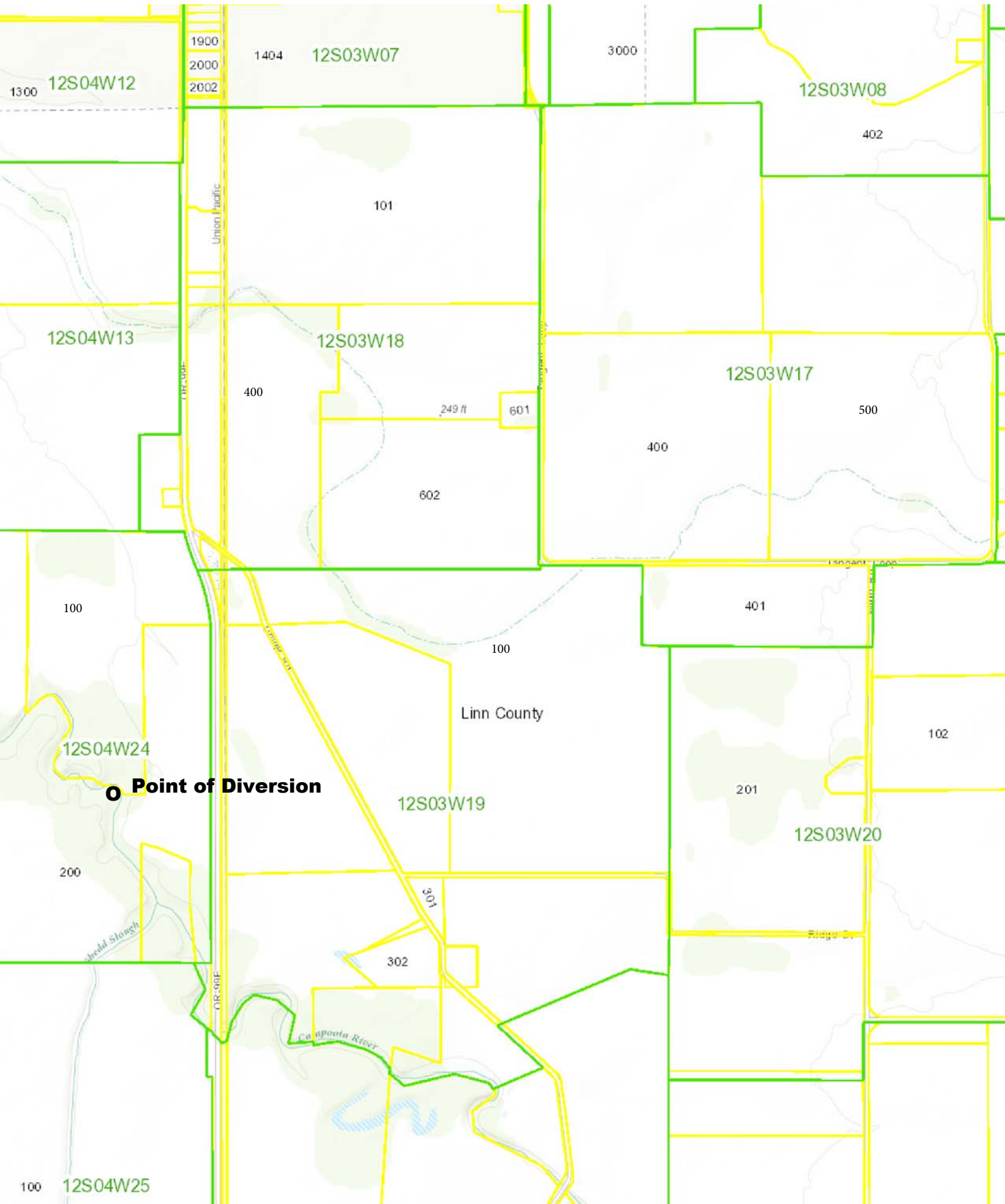




Copyright 2011 ORMAP. All rights reserved. Fri Nov 13 2015 03:50:39 PM.

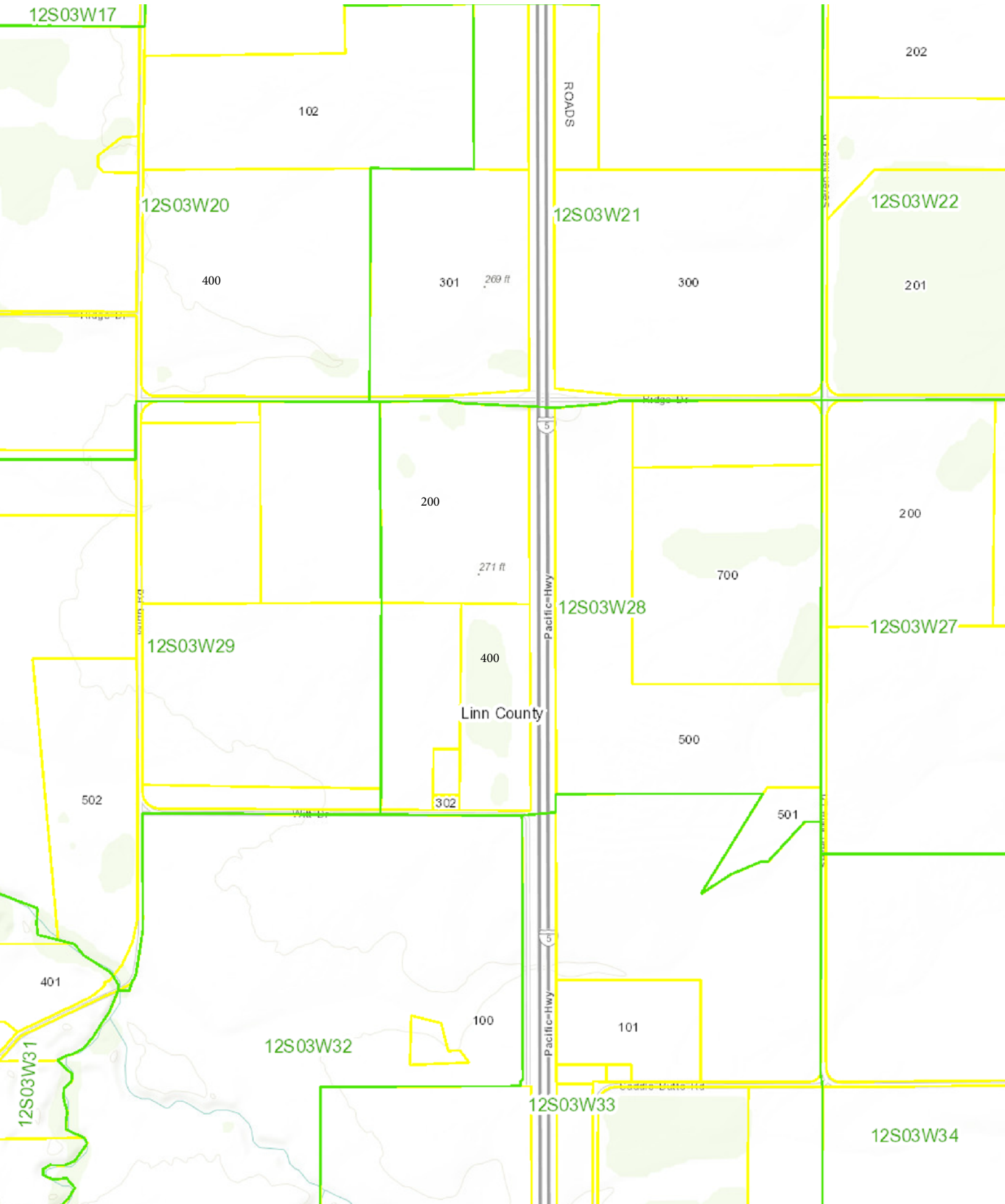
The Oregon Map

Maps 9-13



The Oregon Map

Maps 14-18





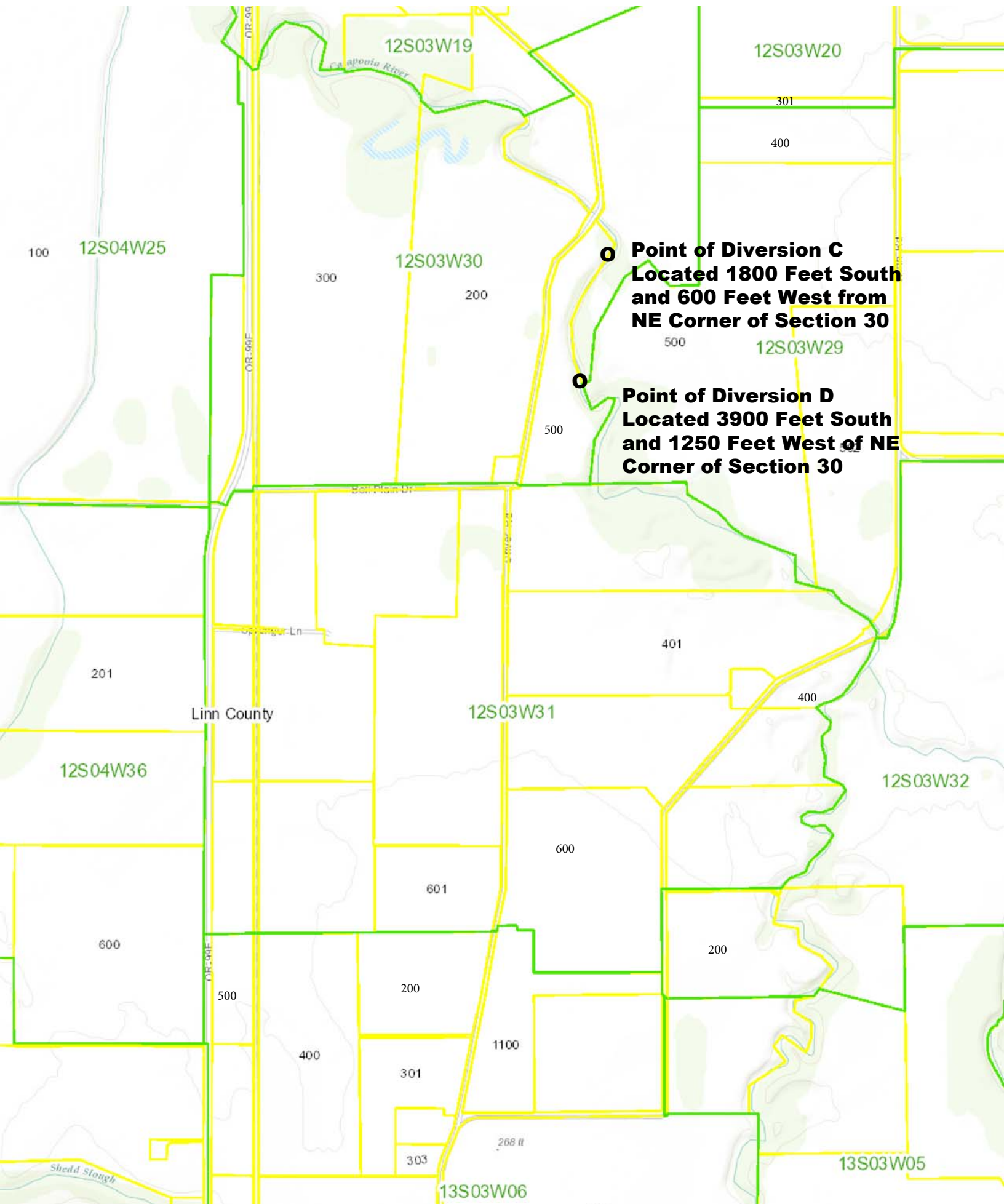
Copyright 2011 ORMAP. All rights reserved. Fri Nov 13 2015 03:53:17 PM.



Copyright 2011 ORMAP. All rights reserved. Fri Nov 13 2015 03:46:41 PM.

The Oregon Map

Maps 19-28





Copyright 2011 ORMAP. All rights reserved. Fri Nov 13 2015 03:58:09 PM.