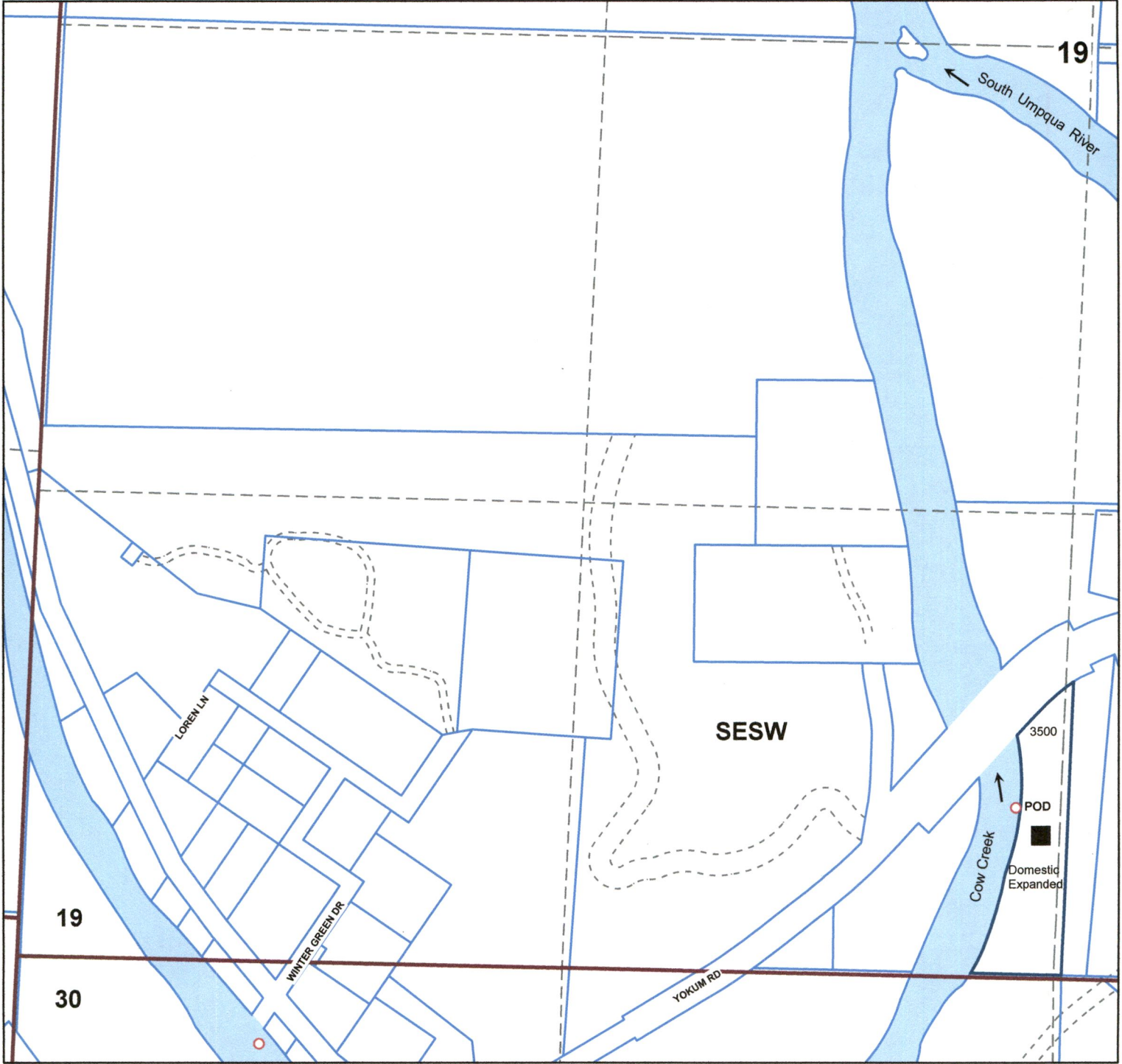


SESW 1/4 Section T30S. R5W. W.M.

**Application Map
Lee and Penni Zeigler
Douglas County
Scale: 1" = 400'**

RECEIVED
APR 09 2018
OWRD



**Point of Diversion is 475 ft. North and 150 ft. West from the
South Quarter Section Corner**

S-88573

THIS MAP WAS PREPARED FOR ASSESSMENT PURPOSE ONLY.

SW1/4 SEC.1' OS. R.5W. W.M. DOUGLAS COUNTY 1" = 200'

REVISED ON 10-31-12

30 5

SEE MAP 30 5 19

5-08523

NE COR JOHN W BURCH DLC NO. 46
NW COR JOHN W BURCH DLC NO. 61
100 54.01 AC

NE COR JOHN W BURCH DLC NO. 61

CANCELLED NOS
2000 200 300
3000 2800 3001
2900 103 3000
601

PORTION OF PARTITION

PLAT
PT PARCEL 1

LOT 5 17.29

70-02

101 18.74 AC
SEE HWY DRG 1R-2-1794
SOUTH UMPQUA RIVER

102 5.02 AC
EAST 272.00'
PORTION OF PARTITION PLAT
PARCEL 2

WLY SW COR JOHN YOKUM DLC NO. 43

SEE MAP 30 6 24D

70-03

LAWSON

ASSESSED BY DOR

301 5.00 AC
MLP 7/34

201 5.01 AC

LOT 6 12.31

NO 1994-3
PARCEL 3
VACATED 99-1454

VACATED CO V22 P35 (OLD CO. RD. 20A)

SEE MAP 30 5 19D

24
19
25
30

1997-117

ACRES
DRIVE
WINTER GREEN

SUB V7 P39
SEE M129-35

1800 0.50 AC

1900 3.00 AC

1400 0.31 AC

1300 0.62 AC

1200 0.62 AC

800 1.27 AC

800 0.85 AC

1000 0.85 AC

1100 1.94 AC

900 0.31 AC

1000 0.31 AC

2400 0.03 AC

2500 4.108 AC

2600 0.11 AC

2700 1.60 AC

2500 0.93 AC

2700 0.93 AC

2700 0.93 AC

2700 0.93 AC

2700 0.93 AC

2700 0.93 AC

2200 1.11 AC

2100 0.76 AC

202 9.14 AC

203 6.93 AC

203 6.93 AC

203 6.93 AC

203 6.93 AC

203 6.93 AC

203 6.93 AC

203 6.93 AC

203 6.93 AC

203 6.93 AC

475N
150W

3500 3.93 AC

3200 2.45 AC

3100 0.80 AC

3200 2.45 AC

3200 2.45 AC

3200 2.45 AC

3200 2.45 AC

3200 2.45 AC

3200 2.45 AC

3200 2.45 AC

3200 2.45 AC

3200 2.45 AC

3200 2.45 AC

3200 2.45 AC

3200 2.45 AC

3200 2.45 AC

3200 2.45 AC

3200 2.45 AC

3200 2.45 AC

541-914-4590
Leet + Penni Zeigler

SEE MAP 30 5 30B

OWRD

APR 09 2018

RECEIVED

477,000
4,162,000

30 5 19C

Copy

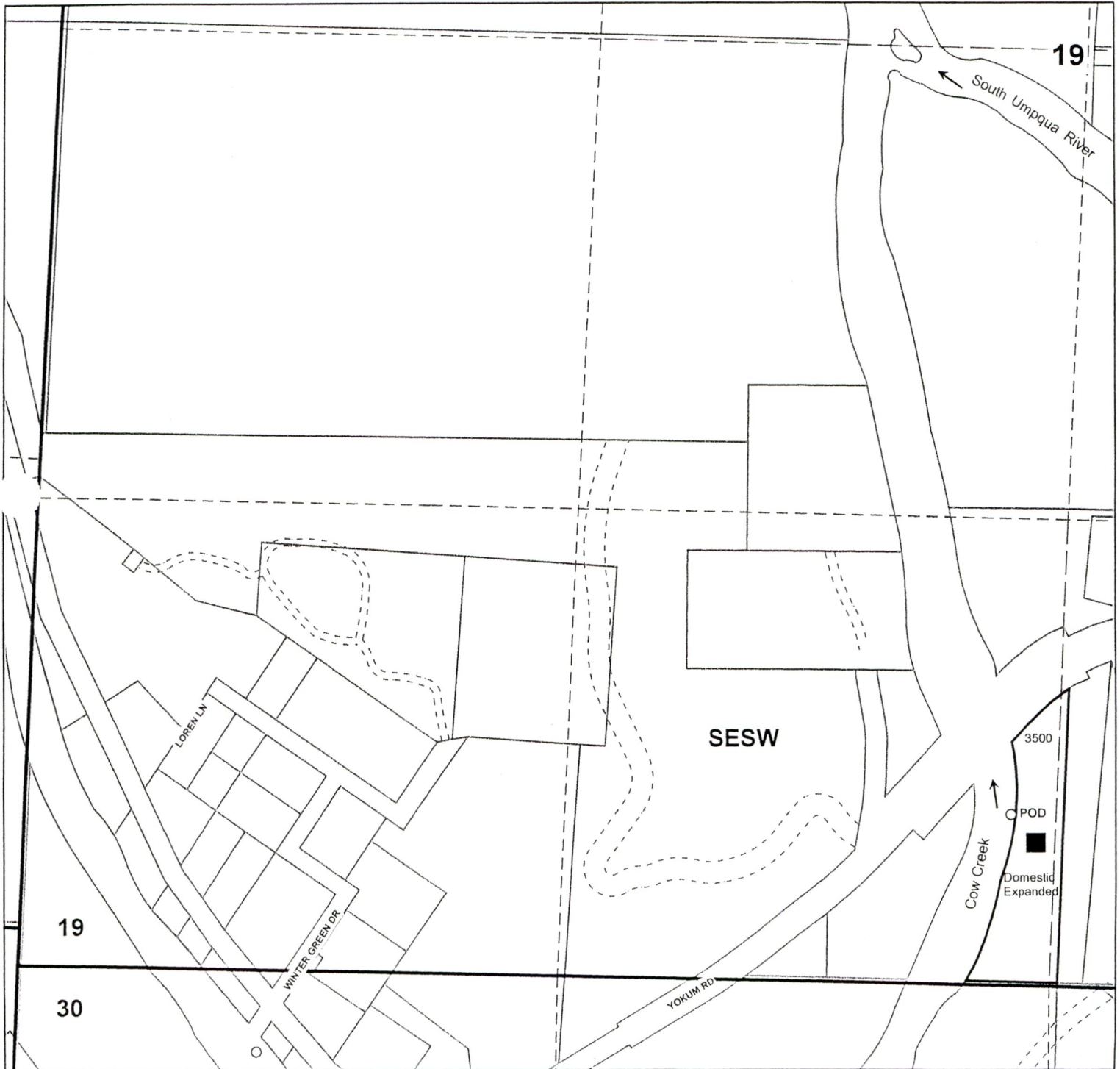
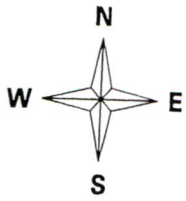
SESW 1/4 Section T30S. R5W. W.M.

Application Map
Lee and Penni Zeigler
Douglas County
Scale: 1" = 400'

RECEIVED

APR 09 2018

OWRD



Point of Diversion is 475 ft. North and 150 ft. West from the
South Quarter Section Corner

S-88573