

RECEIVED

APR 18 2018

OWRD

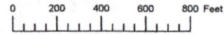
WELL SITE FROM
NE CORNER OF 29
W= 2,226 FT
S= 330 FT
29
T18S-R46E



This map is prepared for
assessment purposes only.
04/17/17

G18654

THIS MAP WAS PREPARED FOR ASSESSMENT PURPOSE ONLY



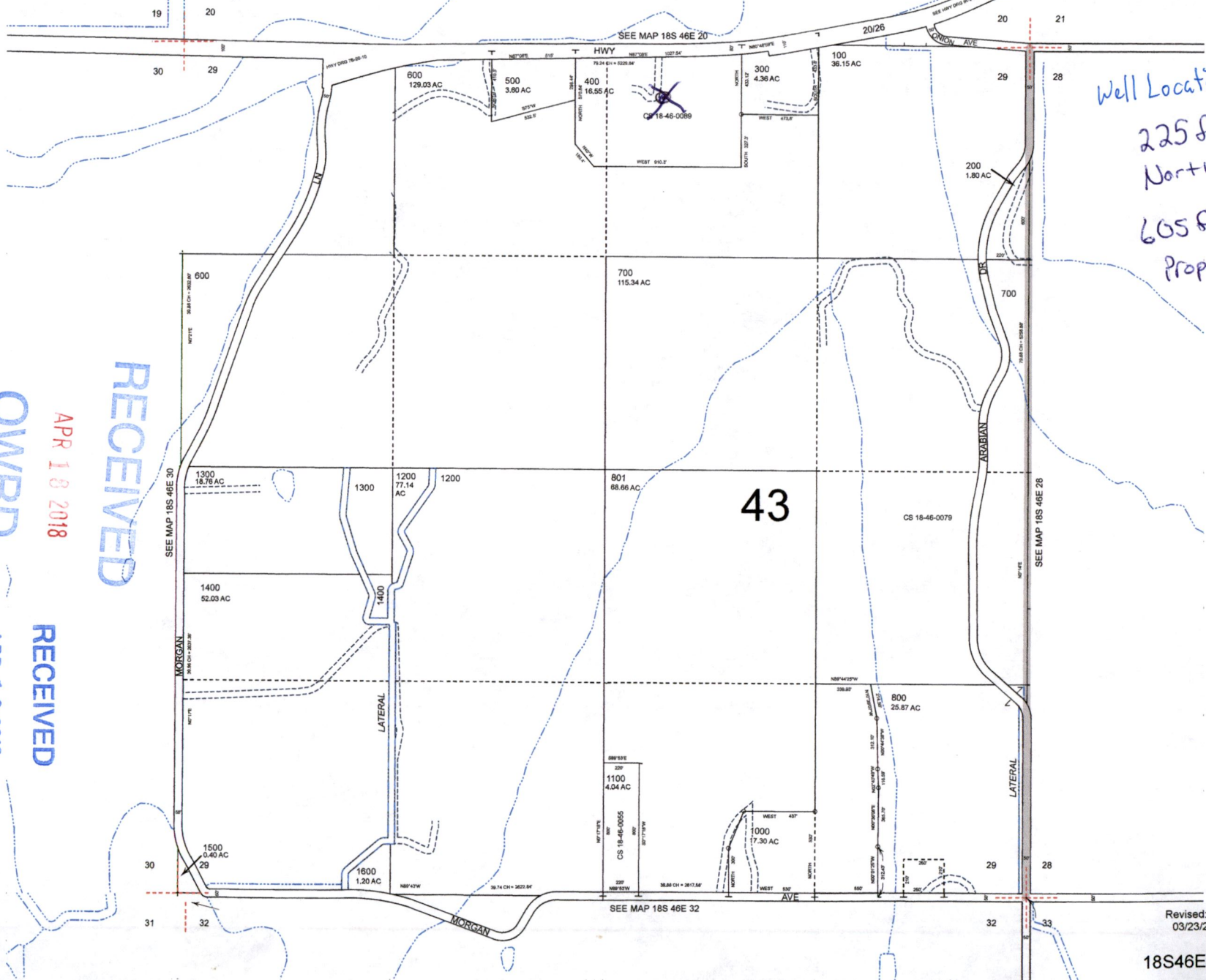
SECTION 29 T.18S. R.46E. W.M. MALHEUR COUNTY

1" = 400'

1 1/2 inch Equals 1320ft 18S46E29

Cancelled 900

G-18654



Well Location
225 ft from North Property Line
605 ft from East Property Line



RECEIVED

APR 18 2018

OWRD

RECEIVED

APR 12 2018

OWRD

43

Revised: MA 03/23/2016

18S46E29