





N

Scale: 1" = 1320'

Amended Location Well#3
 2605' South of NW Corner of SEC 6
 1265' East of NW Corner of SEC 6

LEGEND

-  Buried Pipeline
-  Well
-  Existing Permit G-17865 Place of Use
-  Proposed Place of Use New Application

APPLICATION MAP FOR POINT OF
 APPROPRIATION AMMENDMENT
 FOR PERMIT G-17865
 and for
 NEW GROUND WATER
 FOR
 V BOX LAND & LIVESTOCK CO.

RECEIVED

APR 20 2018

OWRD

RECEIVED

APR 19 2018

OWRD

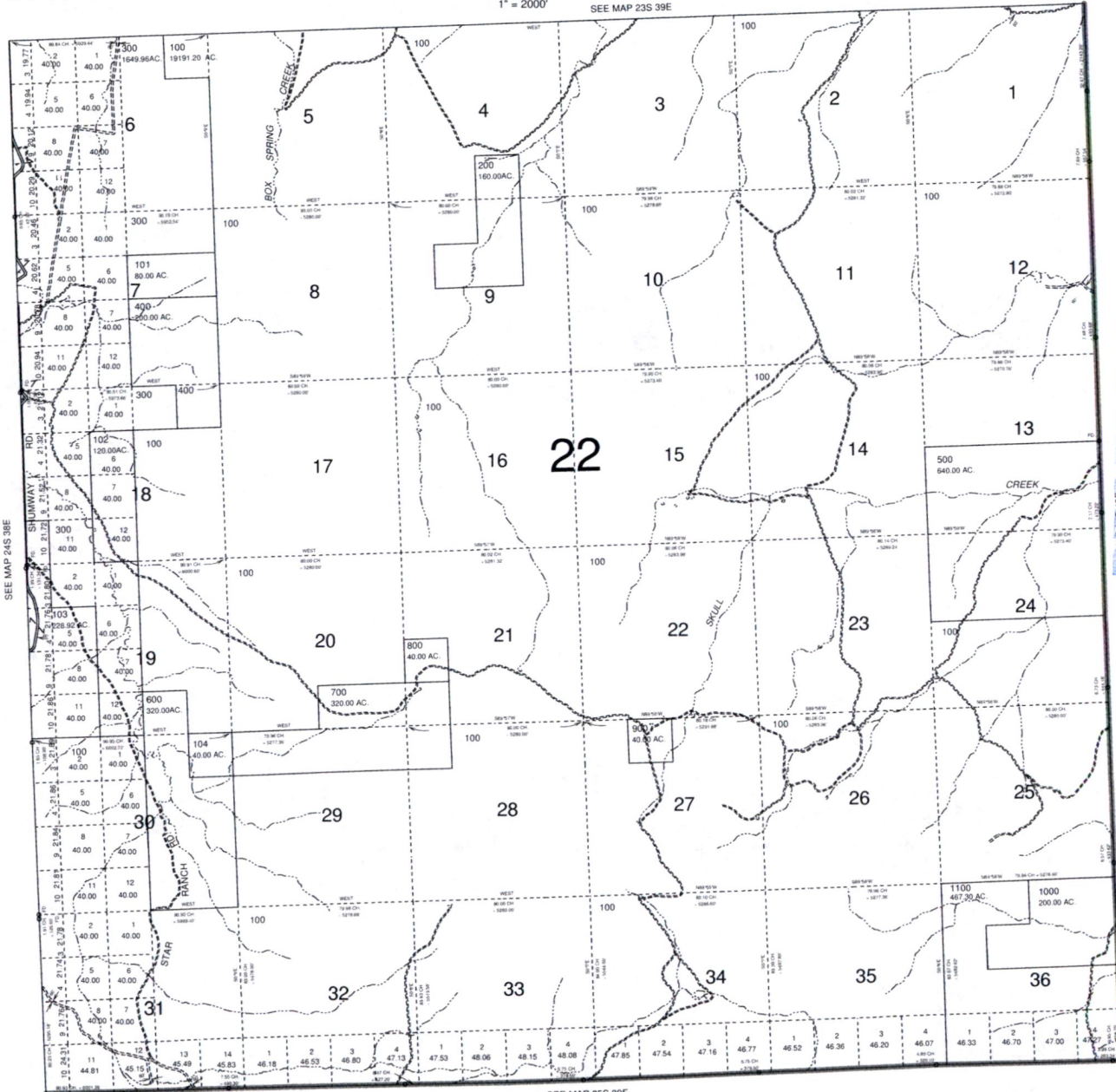
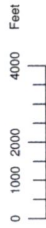
G-18657

THIS MAP WAS PREPARED FOR ASSESSMENT PURPOSE ONLY

T.24S. R.39E. W.M.
MALHEUR COUNTY

24S 39E

1" = 2000' SEE MAP 23S 39E



SEE MAP 25S 39E

RECEIVED

APR 19 2018

OWRD

RECEIVED

APR 29 2018

OWRD

Revised by
DBJ
Aug 21, 2003
24S 39E

6-18657