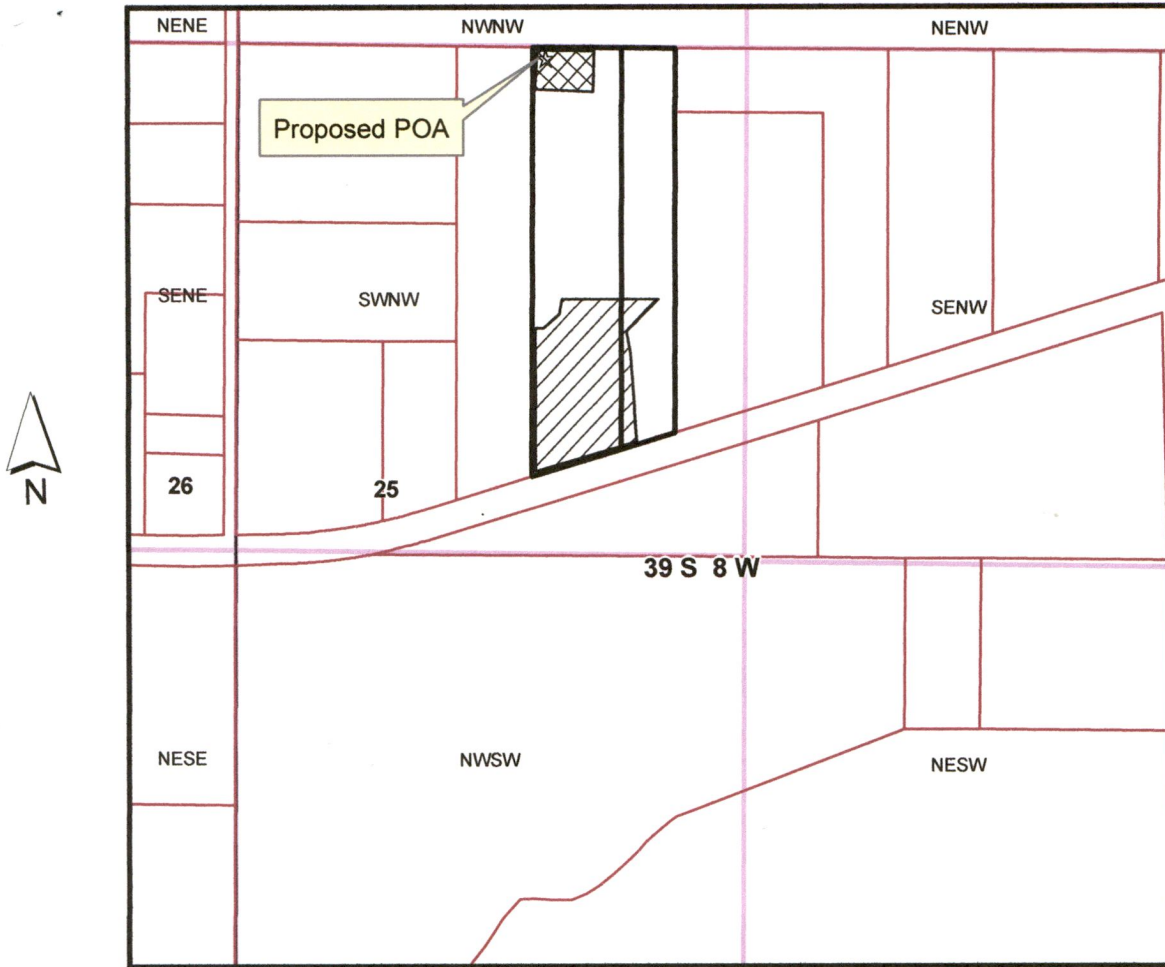






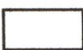


# 39S 8W Section 25 - TL 802 & 806



1 inch = 500 feet

**2800 & 2850 Caves Hwy - S. Treleaven GW Application Map**

 TL 802 & 806	 Irrigation 3 acres
 Josephine	 Nursery Use 0.5 acres
 Townships	 Proposed POA is 790' E, 10' S of NW corner of SW of NW of section 25, 39S 8W
 Sections	

RECEIVED

APR 23 2018

OWRD  
RECEIVED

APR 24 2018

OWRD

G-18660