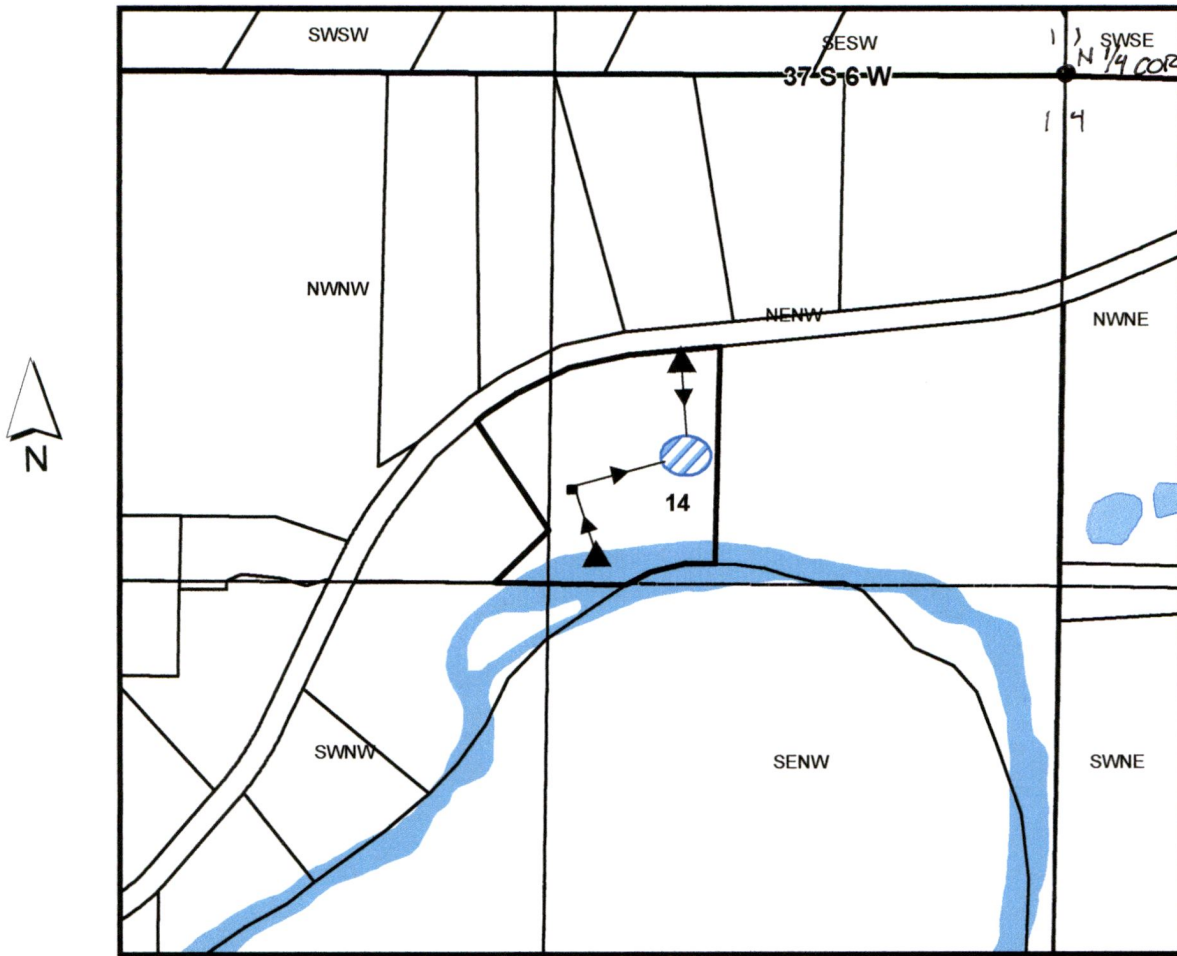


37S 06W Section 14 TL 1001 - 969 Fish Hatchery Rd



1 inch = 500 feet

Alternate Reservoir Application Map for 969 Fish Hatchery Rd

969 Fish Hatchery TL 1001	POD's from Applegate Rvr & Murphy Ditch
Josephine	Pump House
Sections	Conner Pond
Quarter quarters	

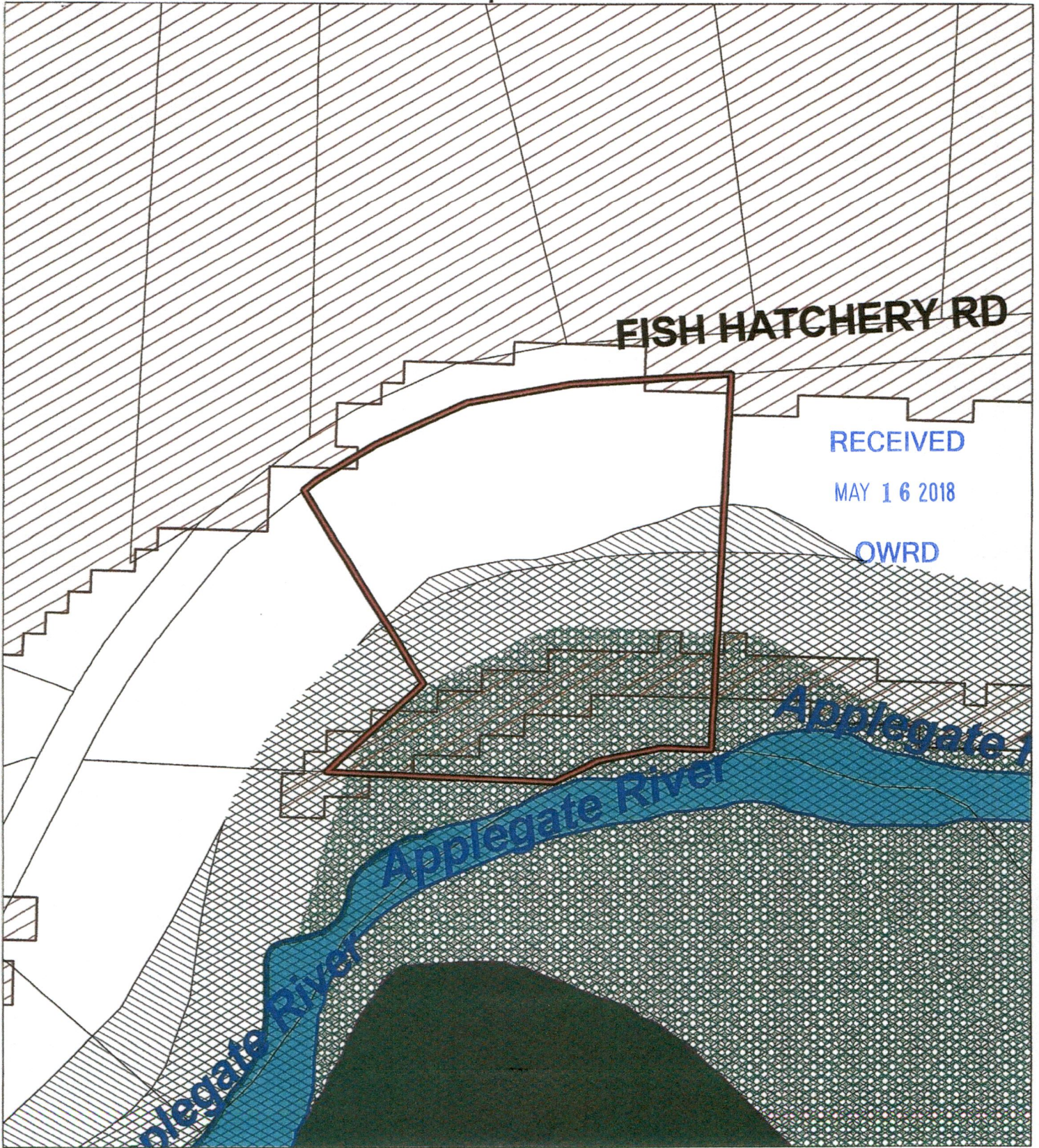
APPLEGATE RIVER POD - 1250' SOUTH & 1200' WEST FROM N 1/4 COR. SEC. 14

RECEIVED

MAY 16 2018

OWRD

R-88583



RECEIVED
MAY 16 2018
OWRD

Legend

FEMA Flood Map	
	Floodway
	Floodway Fringe
	Granite Soils
	Slope > 15%
	Tulebeds
Water (line)	
	Class 1
	Class 2
Water (polygon)	
	Water Bodies
	Wetlands (Line)
	Wetlands (Polygon)



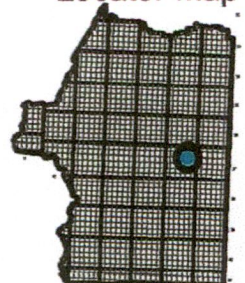
The information on this map is furnished for general interest purposes only. This information is provided without warranties of any kind, express or implied, and it should not be used to support any purchase or other investment. Neither Josephine County, Cave Junction, nor Grants Pass will accept responsibility for any errors or inaccuracies in the depicted information.



Scale
1:2400



Locator Map

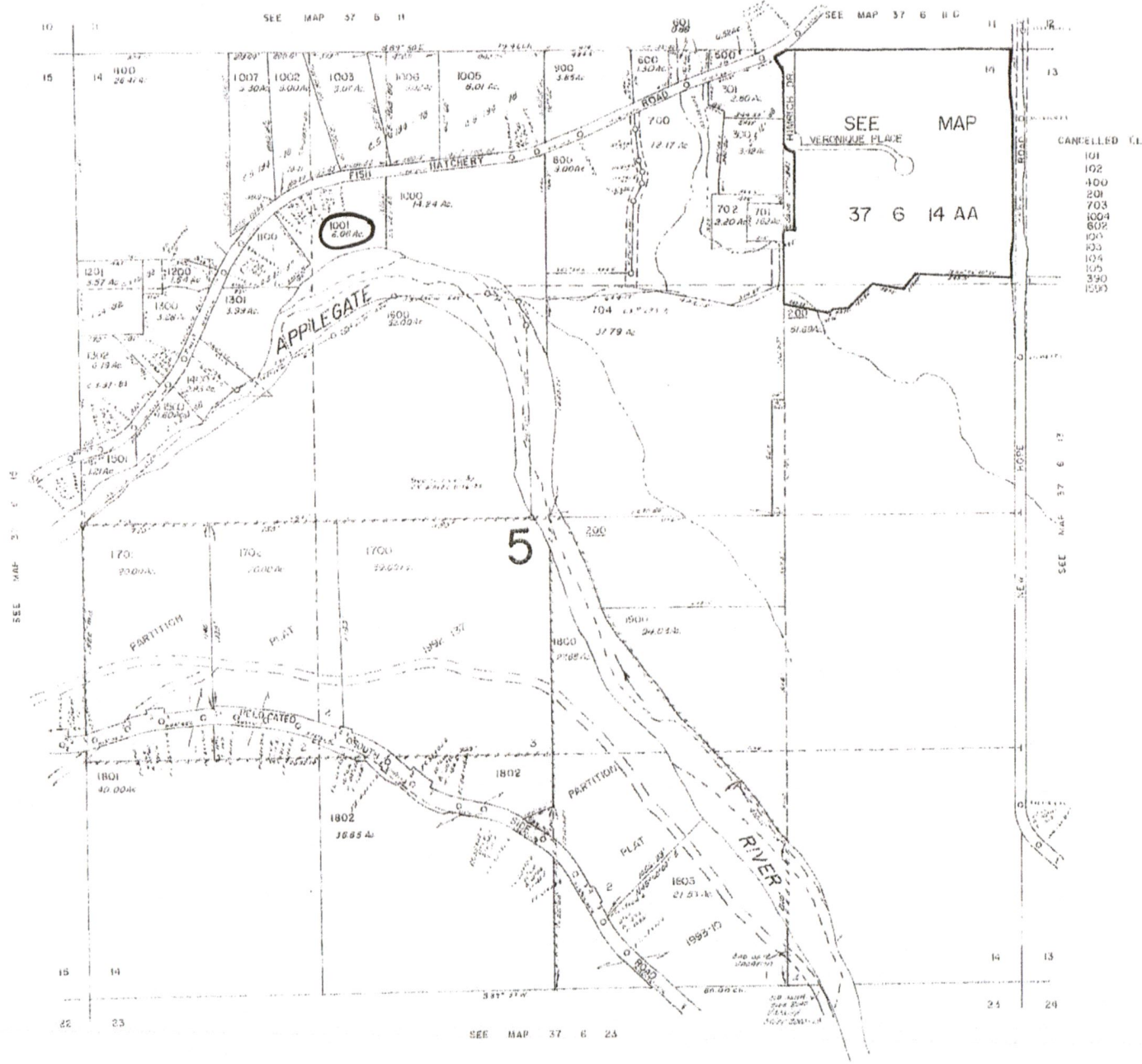


R-00583

1250' S.
1200' W.

R-88583

This map was prepared for
DEPARTMENT OF REVENUE ONLY.



RECEIVED
MAY 16 2018
OWRD