

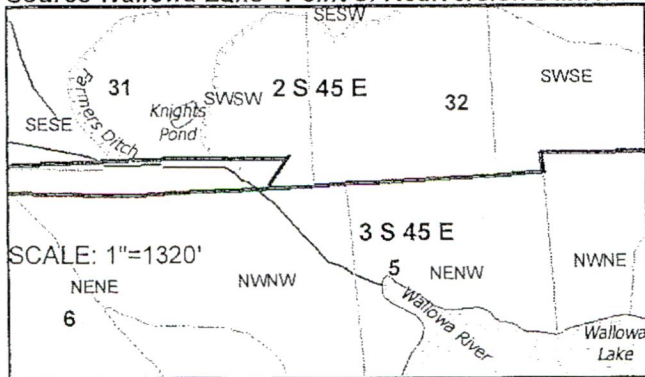
Buhler Stored Water Application Map
Source Wallowa Lake - Point of Rediversion Buhler Pump Station

RECEIVED

SCALE: 1:10,000

JUN 29 2018

OWRD



Source of Water: Wallowa Lake

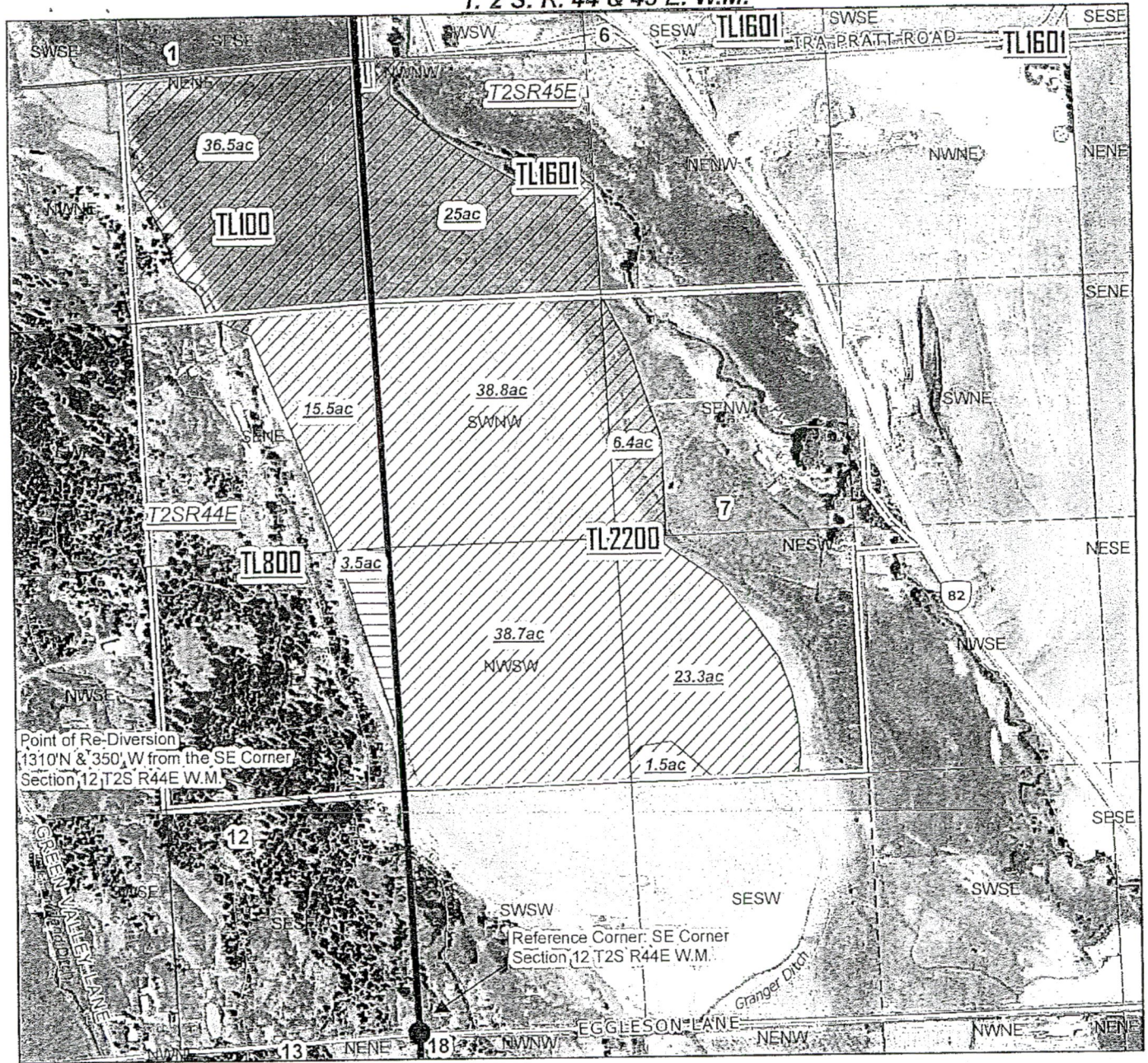
- Townships
- Sections
- Quarter-Quarters
- Taxlots
- Primary POU
- Supplemental POU

Map Disclaimer:
 This product is for informational purposes and may not have been prepared for, or be suitable for, legal, engineering, or surveying purposes. Users of this information should review or consult the primary data and information sources to ascertain the usability of the information.
 This map is not intended to display property lines.

C:\Data\GIS_Data\Applications\Stored Water\2018_Buhler\2018_Buhler.mxd

SP-88596

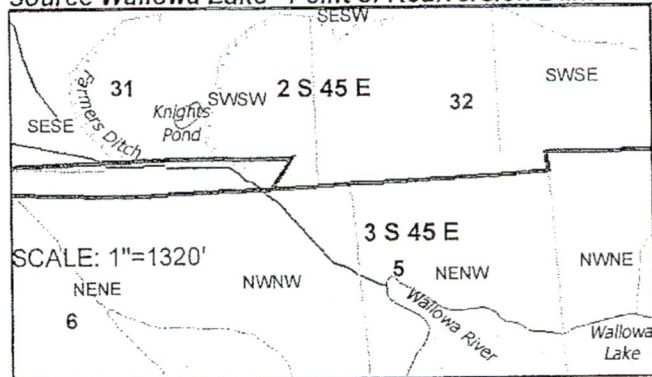
T. 2 S. R. 44 & 45 E. W.M.



Buhler Stored Water Application Map
Source Wallowa Lake - Point of Rediversion Buhler Pump Station

RECEIVED

SCALE: 1:10,000

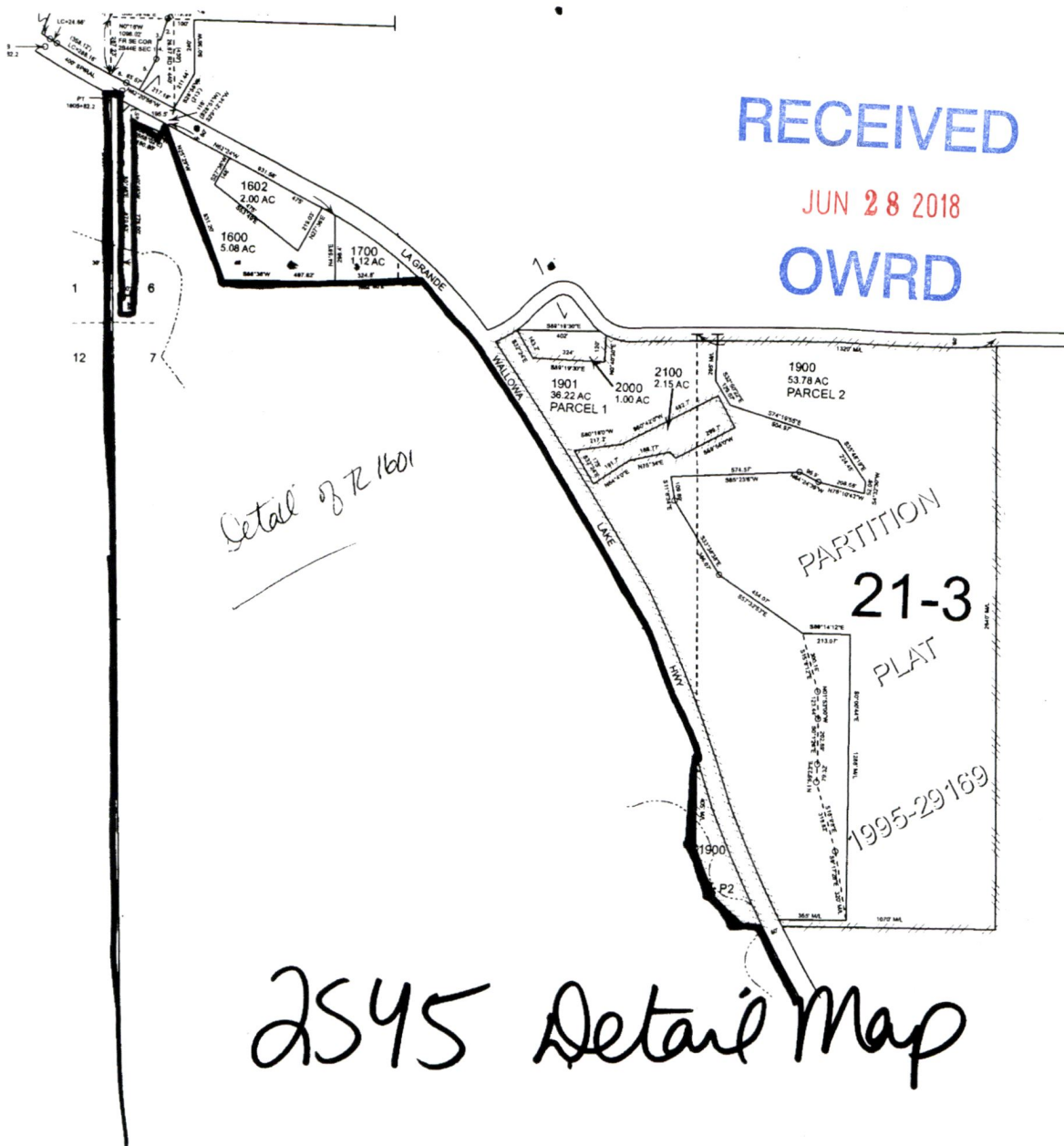


JUN 29 2018

OWRD

- Townships
- Sections
- Quarter-Quarters
- Taxlots
- Primary POU
- Supplemental POU

Map Disclaimer:
 This product is for informational purposes and may not have been prepared for, or be suitable for, legal, engineering, or surveying purposes. Users of this information should review or consult the primary data and information sources to ascertain the usability of the information.
 This map is not intended to display property lines.



RECEIVED

JUN 28 2018

OWRD

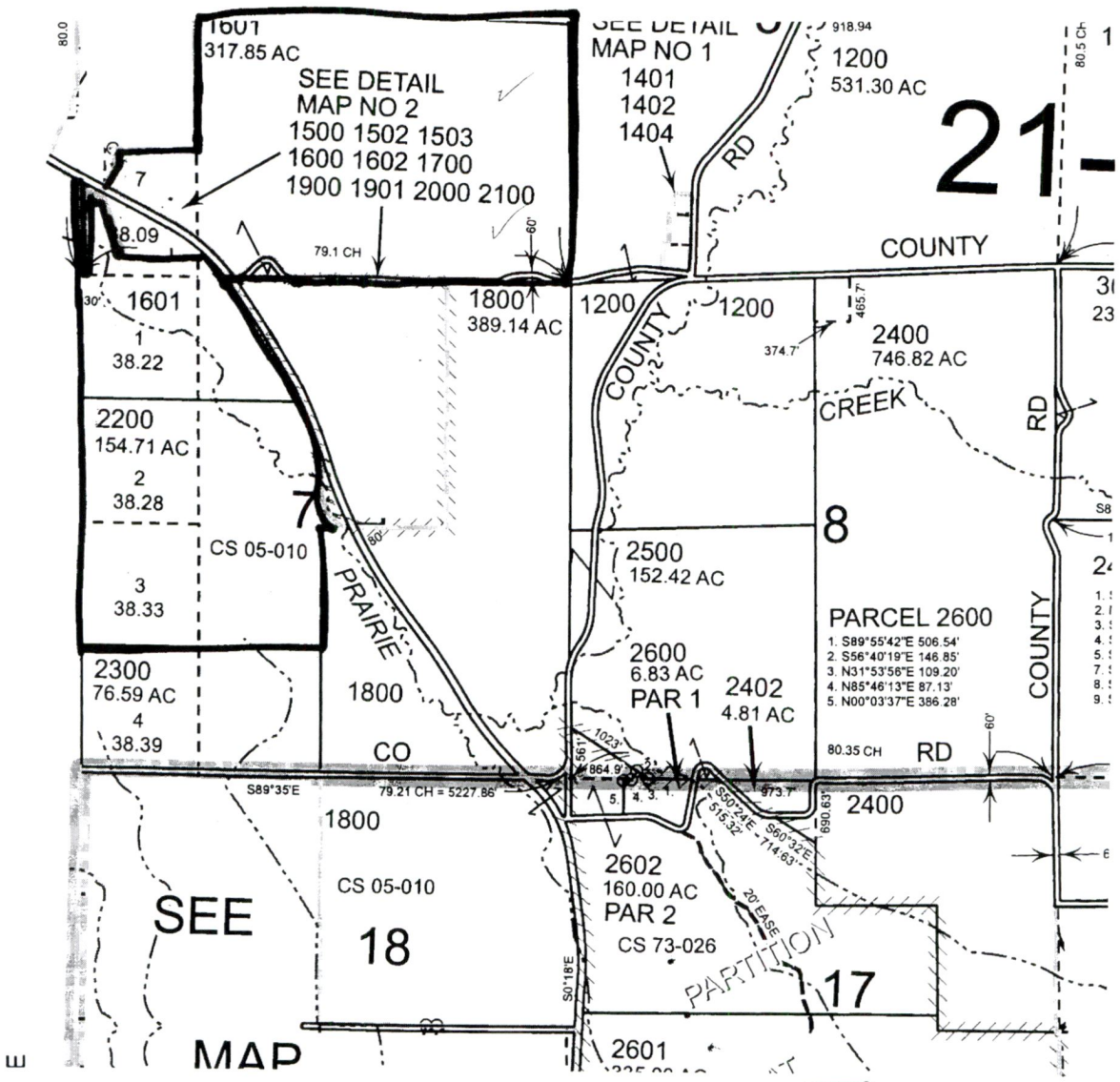
Detail of R 1601

PARTITION
21-3
PLAT

1995-29169

2545 Detail Map

S-88596



21-

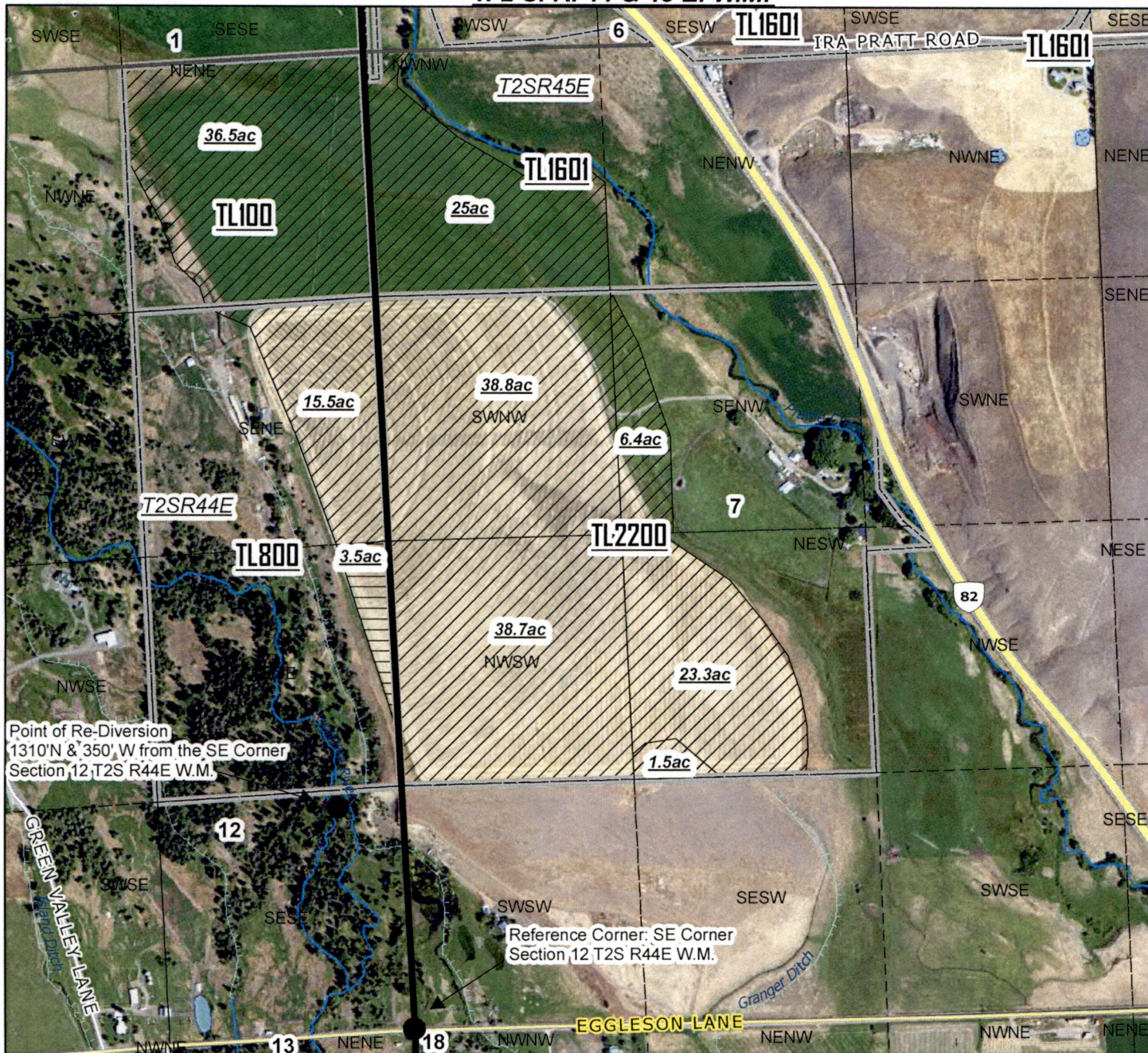
RECEIVED

JUN 28 2018

OWRD

2545

T. 2 S. R. 44 & 45 E. W.M.



Buhler Stored Water Application Map
Source Wallowa Lake - Point of Rediversion Buhler Pump Station



Source of Water: Wallowa Lake

Map Disclaimer:
 This product is for informational purposes and may not have been prepared for, or be suitable for legal, engineering, or surveying purposes. Users of this information should review or consult the primary data and information sources to ascertain the usability of the information.
 This map is not intended to display property lines

C:\Data\GIS_Data\Applications\Stored Water\2018_Buhler\2018_Buhler.mxd

RECEIVED RECEIVED

JUN 28 2018

JUN 20 2018

OWRD

OWRD

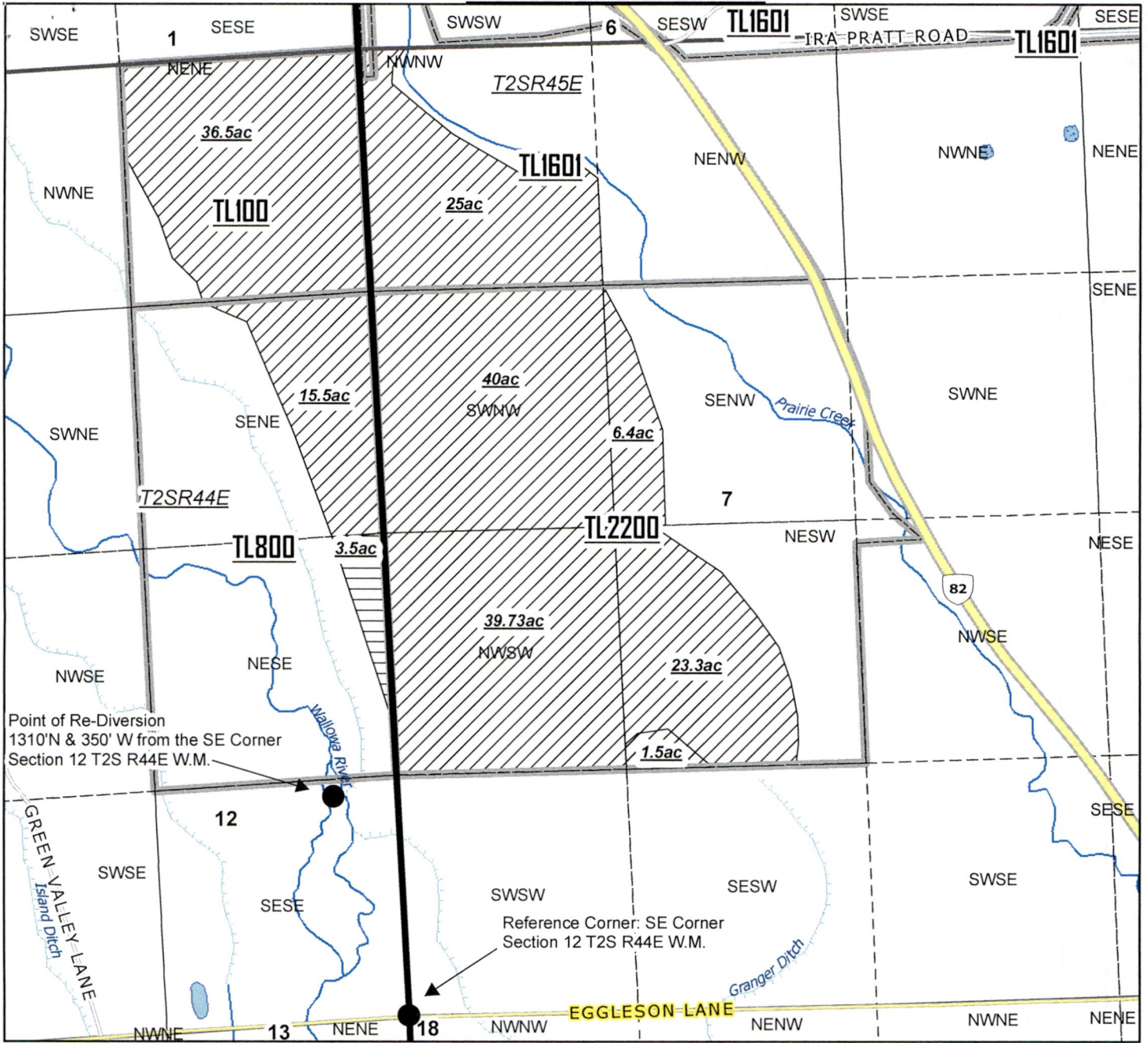
- Townships
- Sections
- Quarter-Quarters
- Taxlots
- Primary POU
- Supplemental POU

SCALE: 1:10,000



0-00591

T. 2 S. R. 44 & 45 E. W.M.



Buhler Stored Water Application Map
Source Wallowa Lake - Point of Rediversion Buhler Pump Station



Source of Water: Wallowa Lake

Map Disclaimer:
 This product is for informational purposes and may not have been prepared for, or be suitable for legal, engineering, or surveying purposes. Users of this information should review or consult the primary data and information sources to ascertain the usability of the information. This map is not intended to display property lines

C:\Data\GIS_Data\Applications\Stored Water\2018_Buhler\2018_Buhler.mxd

RECEIVED

SCALE: 1:10,000

RECEIVED JUN 20 2018

JUN 28 2018

OWRD

OWRD

- Townships
- Sections
- Quarter-Quarters
- Taxlots
- Primary POU
- Supplemental POU

