

5-8864

IMPORTANT
This Map for Assessment
and Taxation Purposes
ONLY

SEC.16 T9S R4W WM
POLK COUNTY
Scale 1" = 400'

See Map 9.4.10

9.4.16

Canceled No.

See Map 9.4.17

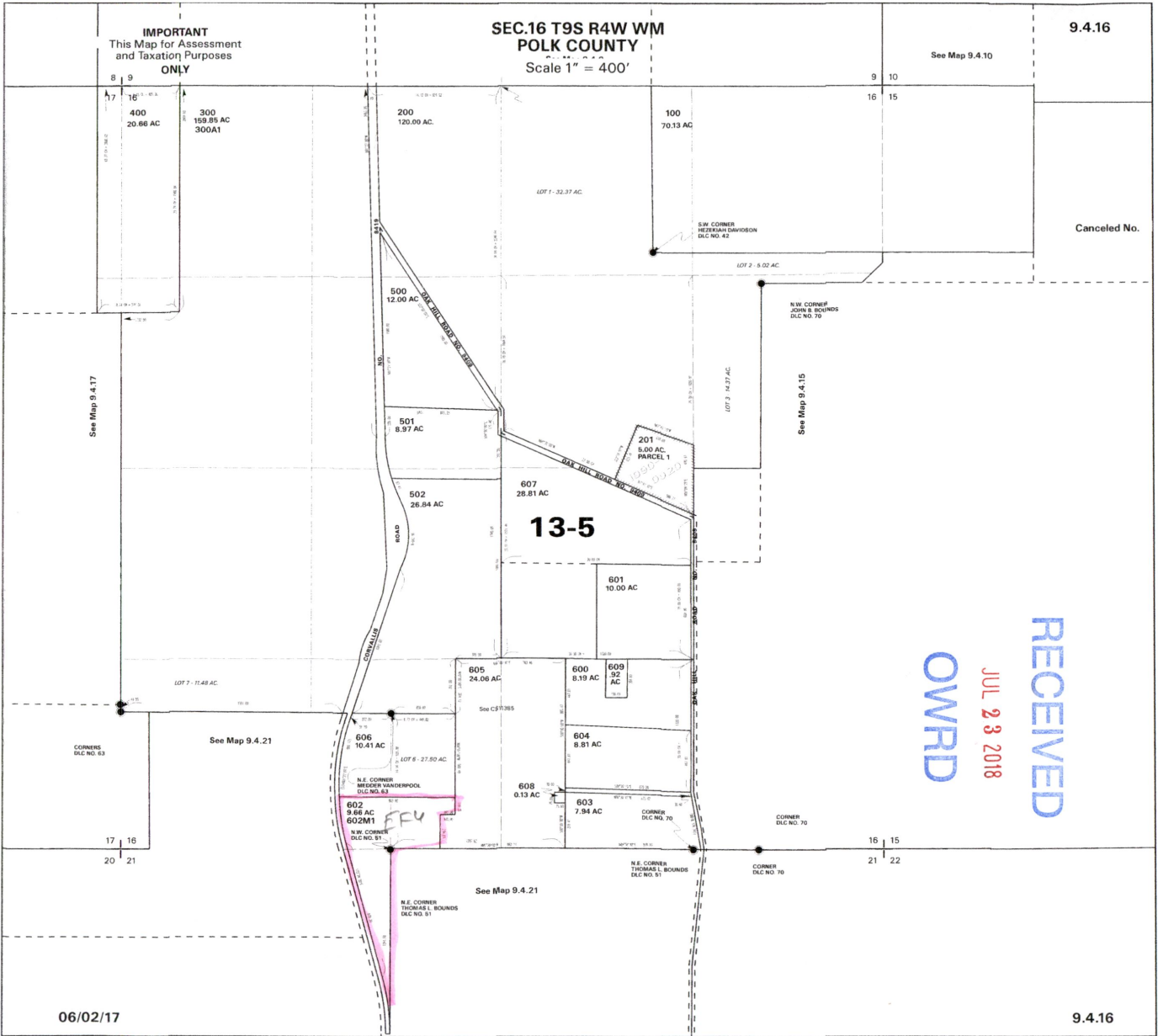
See Map 9.4.15

13-5

RECEIVED
JUL 23 2018
OWPRD

06/02/17

9.4.16



5-88645

IMPORTANT
This Map for Assessment
and Taxation Purposes
ONLY

SEC.17 T9S R4W WM
POLK COUNTY

Scale 1" = 400'

See Map 9.4.8

9.4.17

Canceled No.
1000

13-8

13-5

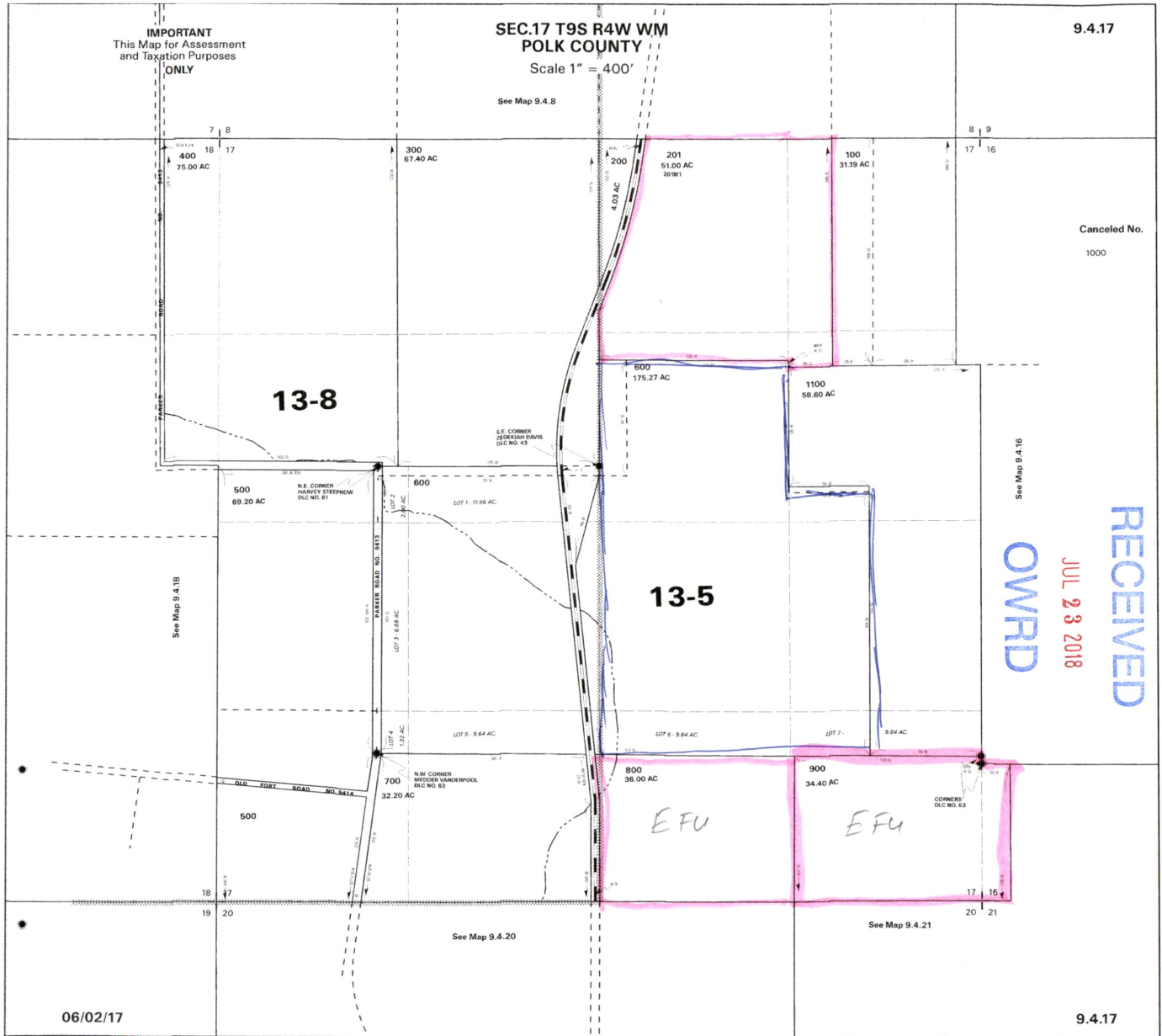
EFU

EFU

RECEIVED
JUL 23 2018
OWPRD

06/02/17

9.4.17



5-88645

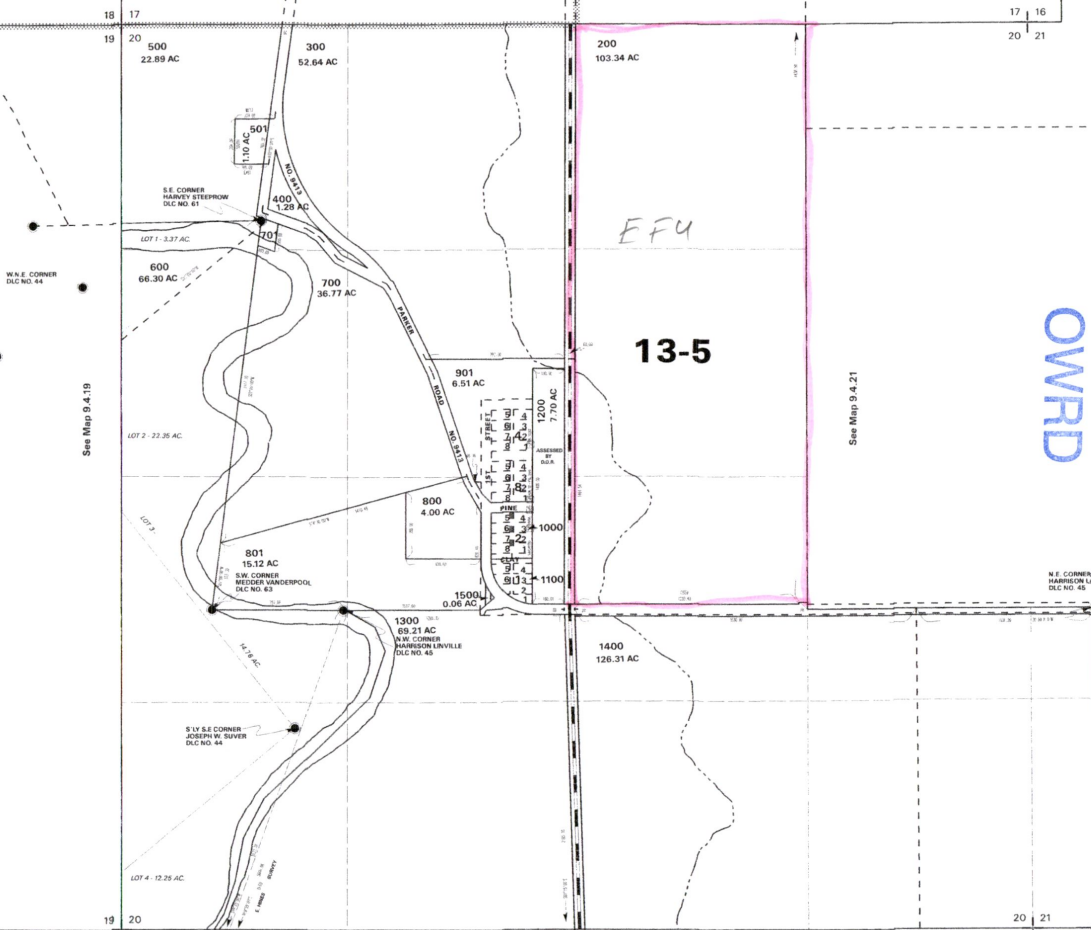
IMPORTANT
This Map for Assessment
and Taxation Purposes
ONLY

**SEC.20 T9S R4W WM
POLK COUNTY**

Scale 1" = 400'

9.4.20

See Map 9.4.17



Canceled No.

- 100
- 601
- 602
- 900
- 1301
- 1401
- 1402
- 1403
- 1501

RECEIVED
OWPRD
 JUL 23 2018

See Map 9.4.21

See Map 9.4.19

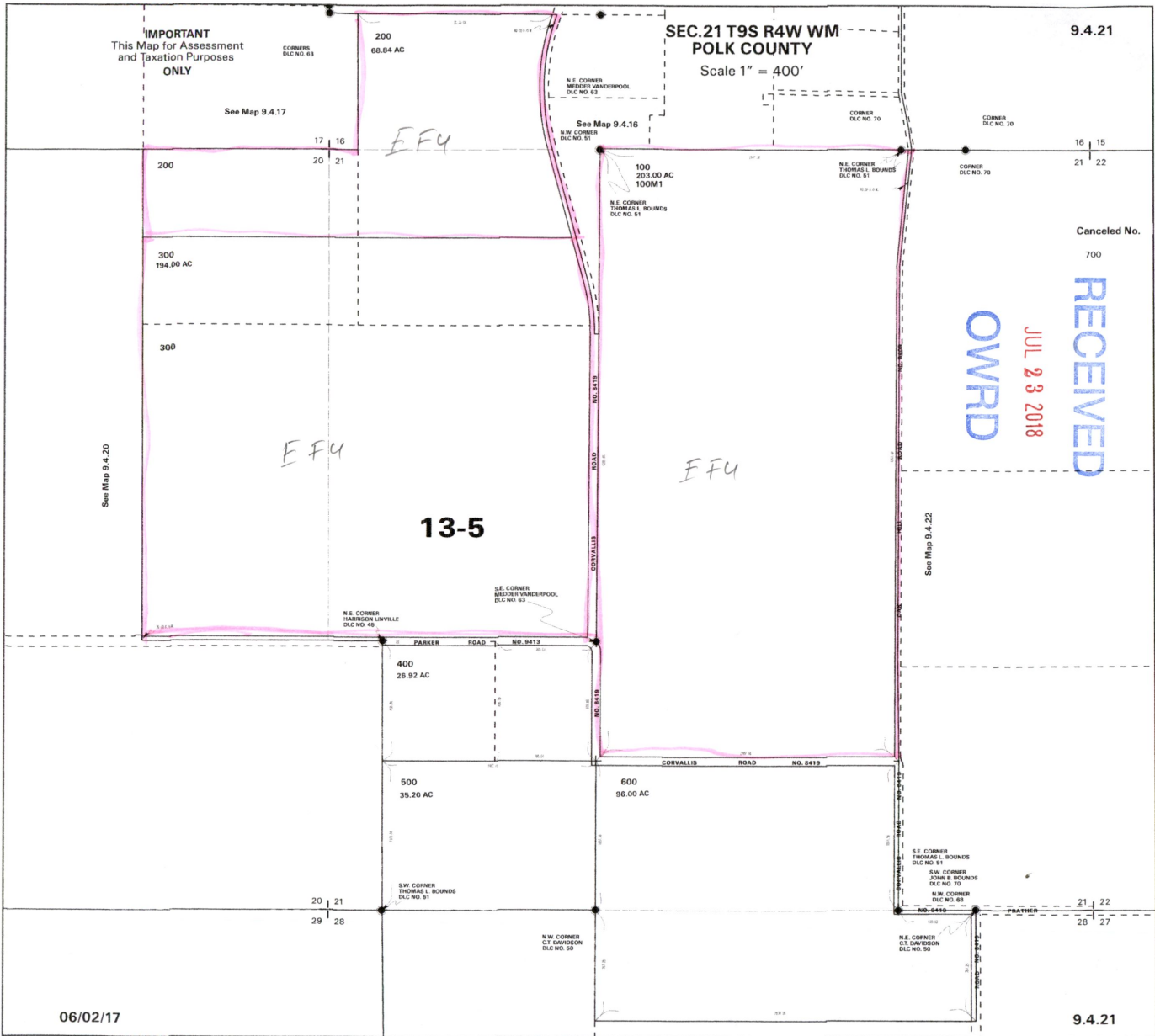
See Map 9.4.30

See Map 9.4.29

06/02/17

9.4.20

51988-5



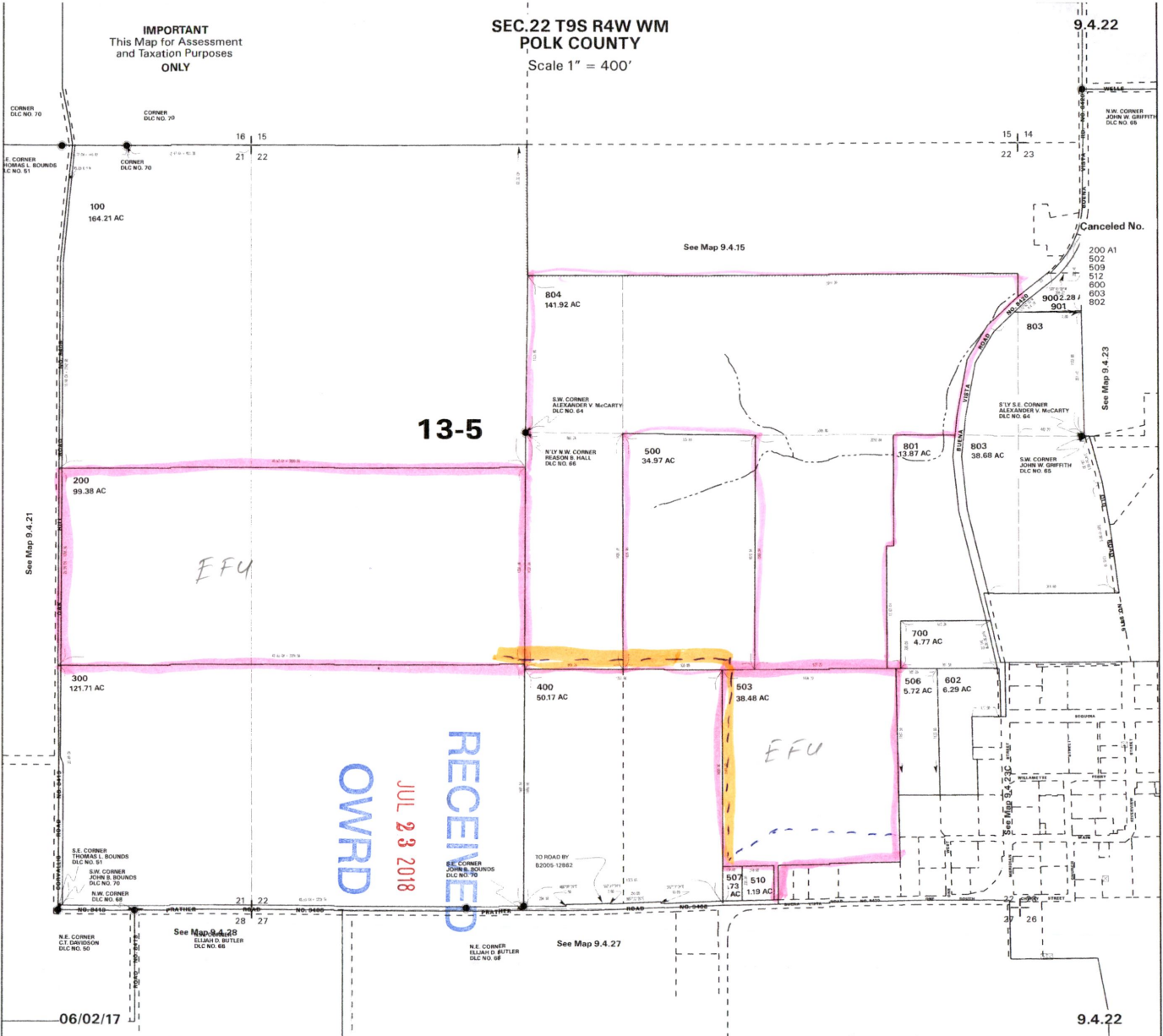
8864

IMPORTANT
This Map for Assessment
and Taxation Purposes
ONLY

SEC.22 T9S R4W WM
POLK COUNTY

Scale 1" = 400'

9.4.22



13-5

EFU

EFU

RECEIVED
OWRD
JUL 23 2018

06/02/17

9.4.22

5-8645

IMPORTANT
This Map for Assessment
and Taxation Purposes
ONLY

SW1/4 SEC. 23 T9S R4W WM
POLK COUNTY
Scale 1" = 200'

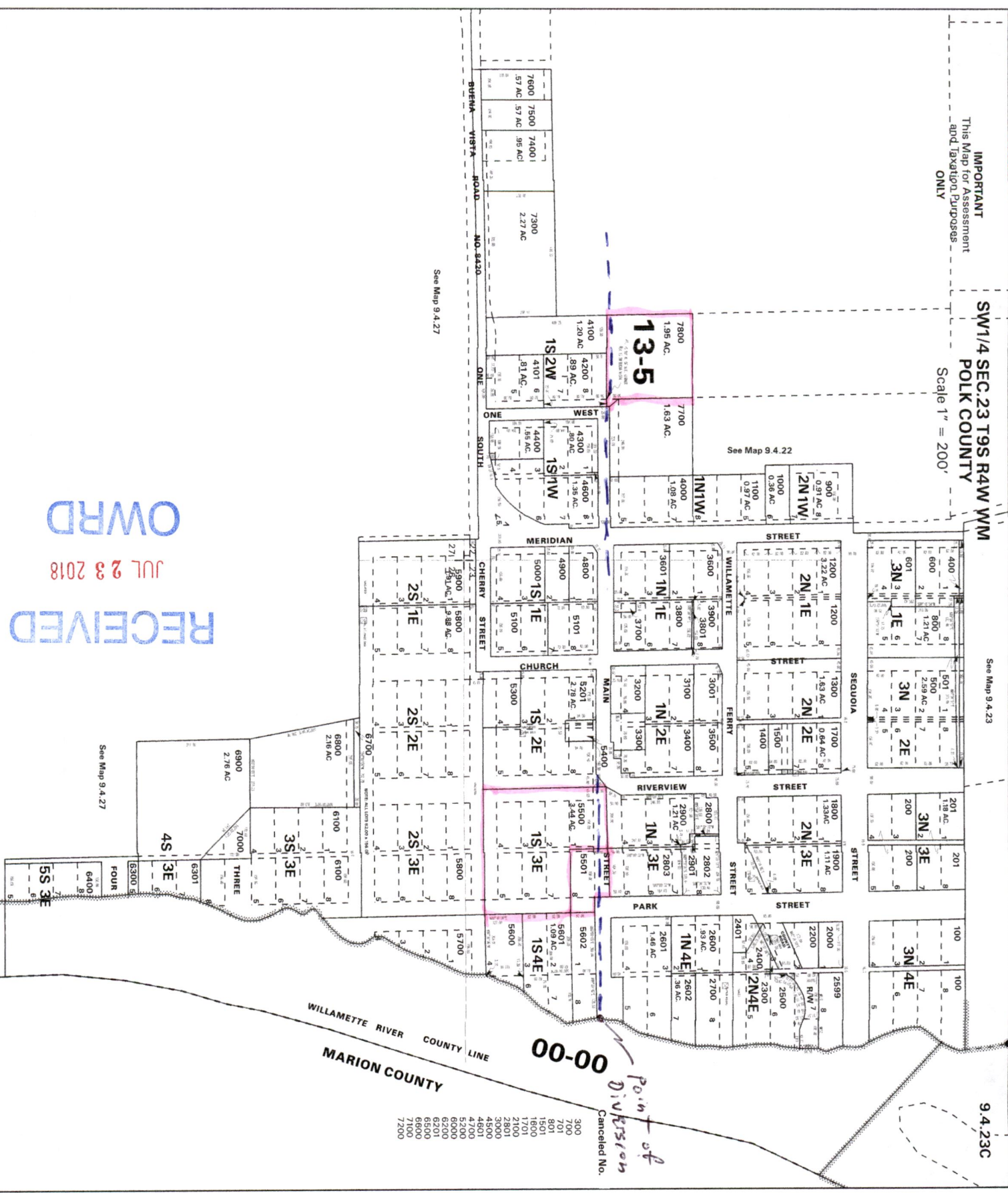
See Map 9.4.23

9.4.23C

300
700
701
801
1801
1802
1701
2100
2801
3000
4500
4700
5200
6000
6200
6201
6800
7100
7200
Canceled No.

00-00
Point of
Division

WILLAMETTE RIVER COUNTY LINE
MARION COUNTY



See Map 9.4.22

See Map 9.4.27

See Map 9.4.27

RECEIVED
JUL 23 2018
OWRPD

06/02/17

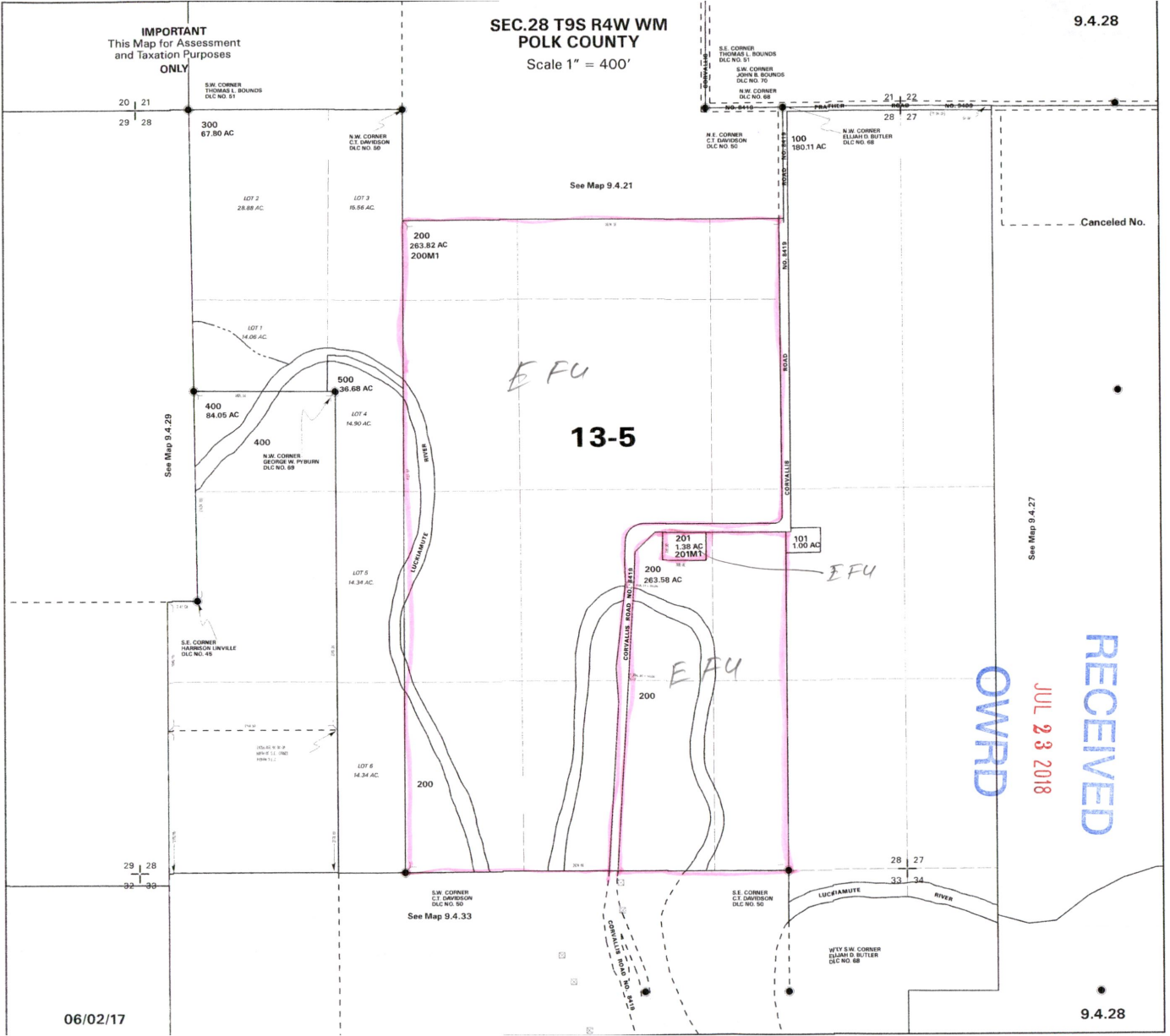
9.4.23C

57988-5

IMPORTANT
This Map for Assessment
and Taxation Purposes
ONLY

SEC.28 T9S R4W WM
POLK COUNTY
Scale 1" = 400'

9.4.28



06/02/17

9.4.28

RECEIVED
JUL 23 2018
OWPRD