

This map was prepared for assessment purpose only.

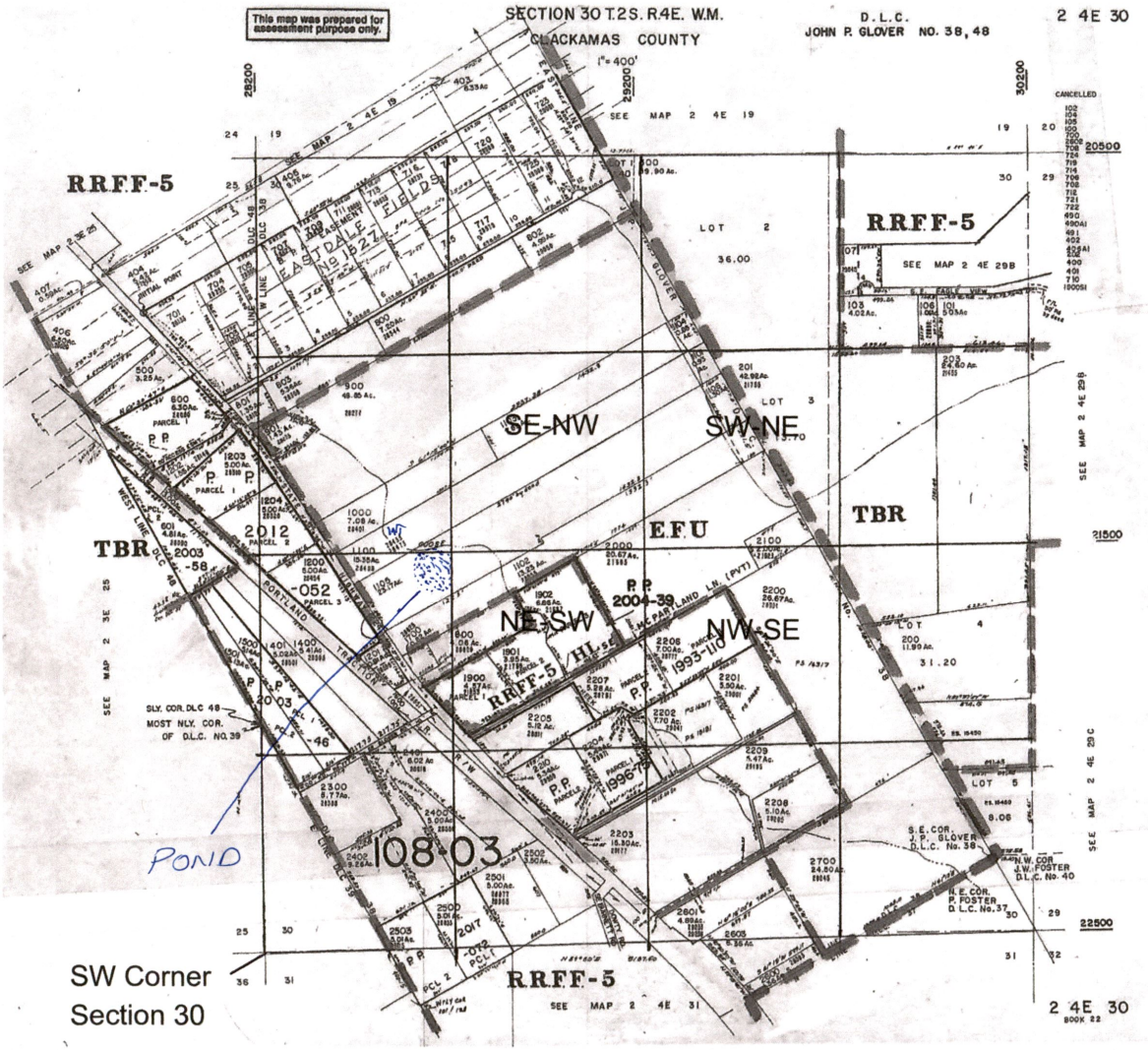
SECTION 30 T2S. R4E. W.M.
CHACKAMAS COUNTY

D. L. C.
JOHN P. GLOVER NO. 38, 48

2 4E 30

T2S R4E Section 30

TL 1105
Center of reservoir is located:
2550' N, 1180' E
from the SW corner
of Section 30
Scale 1"=1000'



SW Corner
Section 30

RECEIVED

AUG 10 2018

OWRD

R-88660