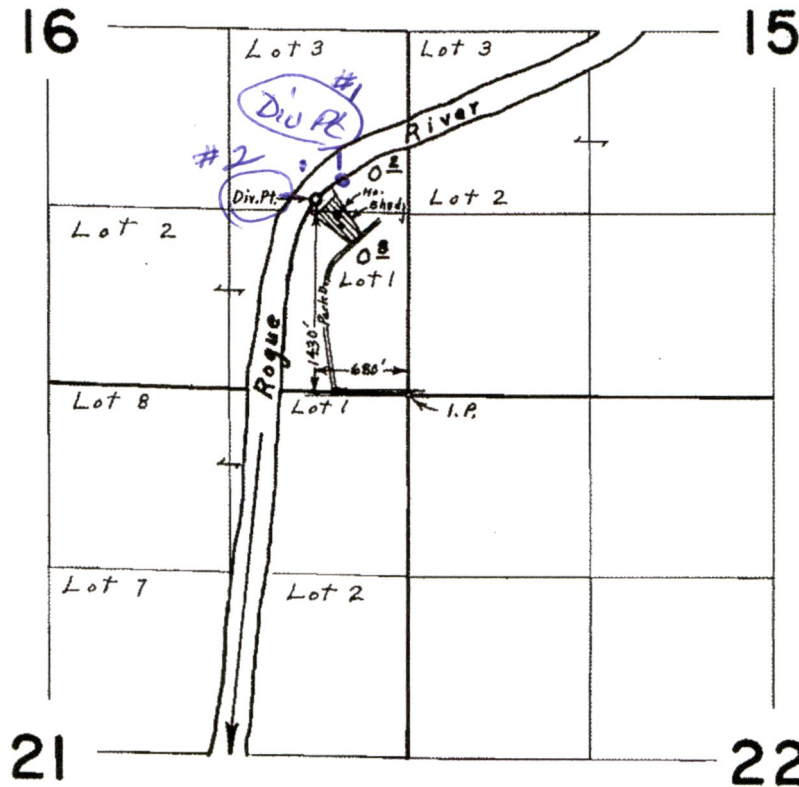


T. 34 S.R. 1 W.W.M.



RECEIVED
 AUG 13 2018
 OWRD

Application for Domestic
 USE LIMITED License
 DIU #2 1430' NORTH + 680' WEST
 FROM SE CORNER SECTION 16
 DIU #1 1430' NORTH + 700' WEST
 OF THE SE CORNER OF SECTION 16

Surveyed May 20, 1968, by L.E. Gould

ROGUE HIGH

WATER RIVER

LINE

RECEIVED
AUG 13 2018
OWRD

WC 6 +/-
63.71

6.4 +/- WC

4.6 +/- WC

5'28"E

100.07 (100.0) TRAVERSE LINE PER EDGWOOD SUBDIVISION 100.07 (100.0)

149.97

ADJUSTED TL 701
26794 SQ FT +/-
DOC.# 02-21806
ORJCO.

COUNTY CHANGED TO TL 703

ADJUSTED TL 700
30098 SQ FT +/-
DOC.# 02-21806
ORJCO.

N41°48'06"W

DOC.#01-00885, ORJCO.

300.26

300.26

379.98

N39°54'05"W

N39°54'05"W

DOC.#98-09553, ORJCO.

300.87

FD. ORIGIN

6

8

7

SHED

N55°58'18"W

306.28

ADJUSTED PROPERTY 1

9

GARAGE

5

GRAVEL

N59°10'14"W

TRUE POINT OF BEGINNING

FS3456

66761

166.6