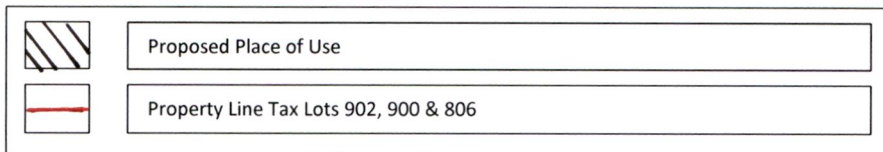
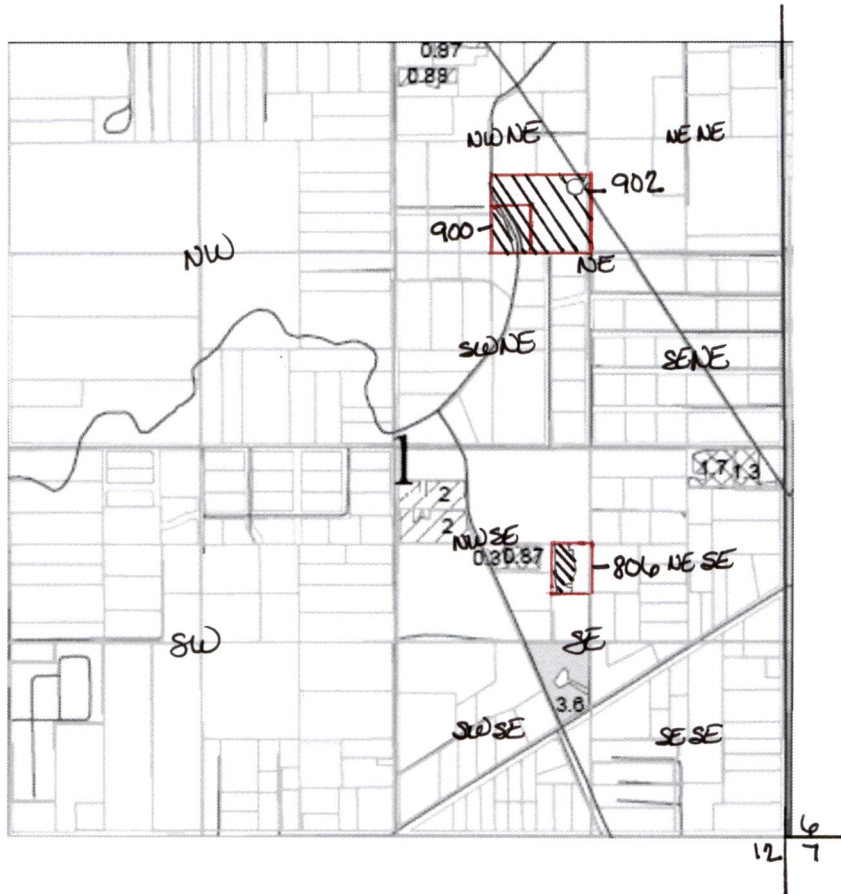


# T4N, R28E, Sec 01

QQ NW NE 5.0 Acres Tax Lot 902

QQ NW NE 1.5 Acres Tax Lot 900

QQ NW SE 1.0 Acres Tax Lot 806



1 Inch = 1320 Feet

RECEIVED RECEIVED

AUG 20 2018

AUG 17 2018

2018 Hermiston Irrigation District

Permit to Use Surface Water

Proposed "TO" Lands

OWRD

OWRD

4N28E 01 TAX LOTS 900 & 902  
Torres, Francisco

FOR REFERENCE ONLY - NOT TO SCALE

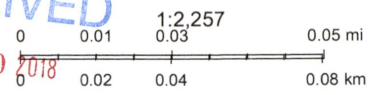


6/27/2018, 1:22:19 PM

- Override 1
- CountyRoads
- Pipeline
- DistrictBoundary
- Taxlots
- Canals

RECEIVED  
AUG 17 2018  
OWRD

RECEIVED  
AUG 20 2018  
OWRD



Esri, HERE, Garmin, © OpenStreetMap contributors, and the GIS user community. Source: Esri, DigitalGlobe, GeoEye, Earthstar Geographics, Hermiston Irrigation District. Copyright Hermiston Irrigation District. All Rights Reserved.

4N 28E 01 TAXLOT 806  
Searle Patience

FOR REFERENCE ONLY - NOT TO SCALE



7/12/2018, 9:54:01 AM

- Override 1
- CountyRoads
- Taxlots by Owner \_Query result
- Taxlots
- DistrictBoundary

RECEIVED

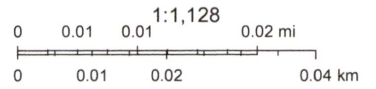
AUG 17 2018

OWRD

RECEIVED

AUG 20 2018

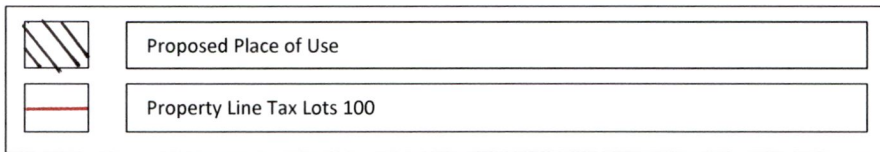
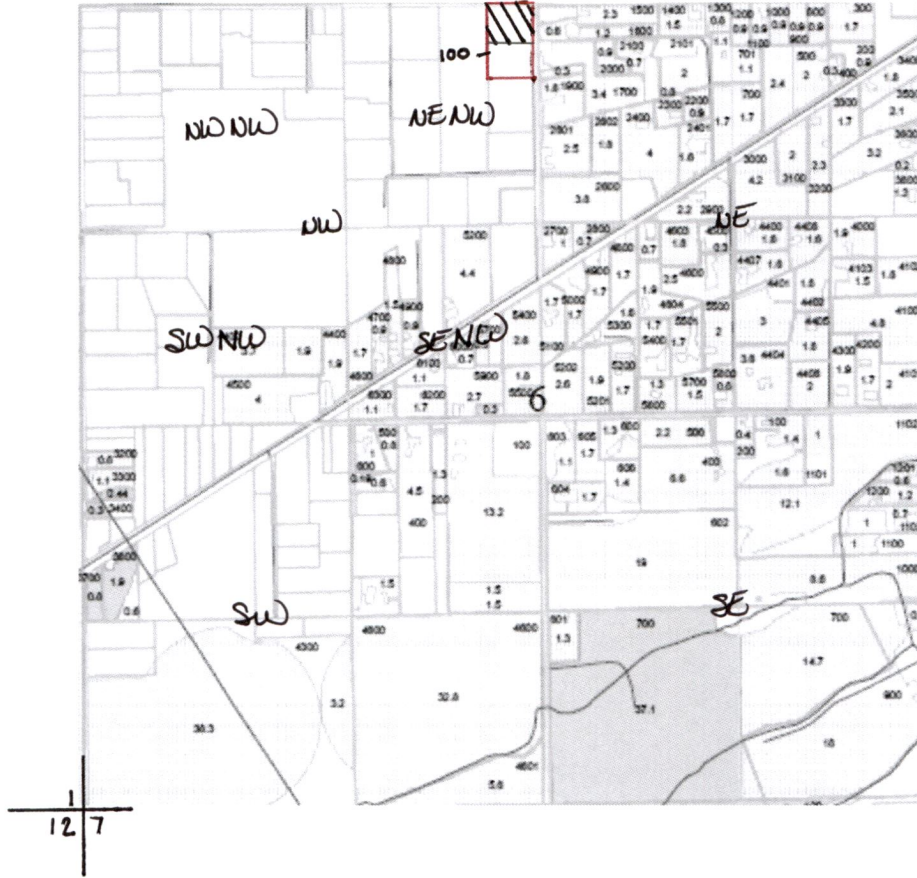
OWRD



Esri, HERE, Garmin, © OpenStreetMap contributors, and the GIS user community. Source: Esri, DigitalGlobe, GeoEye, Earthstar Geographics, Hermiston Irrigation District. Copyright Hermiston Irrigation District. All Rights Reserved.

# T4N, R29E, Sec 06

## QQ NE NW 2.0 Acres Tax Lot 100



RECEIVED  
AUG 20 2018  
OWRD

1 Inch = 1320 Feet

2018 Hermiston Irrigation District  
Permit to Use Surface Water  
Proposed "TO" Lands

RECEIVED  
AUG 17 2018  
OWRD

Phillips Linda

FOR REFERENCE ONLY - NOT TO SCALE



7/10/2018, 3:33:34 PM

- Override 1
- CountyRoads
- DistrictBoundary
- Taxlots

RECEIVED

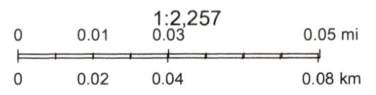
AUG 20 2018

OWRD

RECEIVED

AUG 17 2018

OWRD

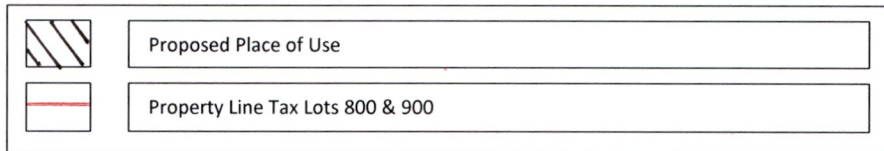
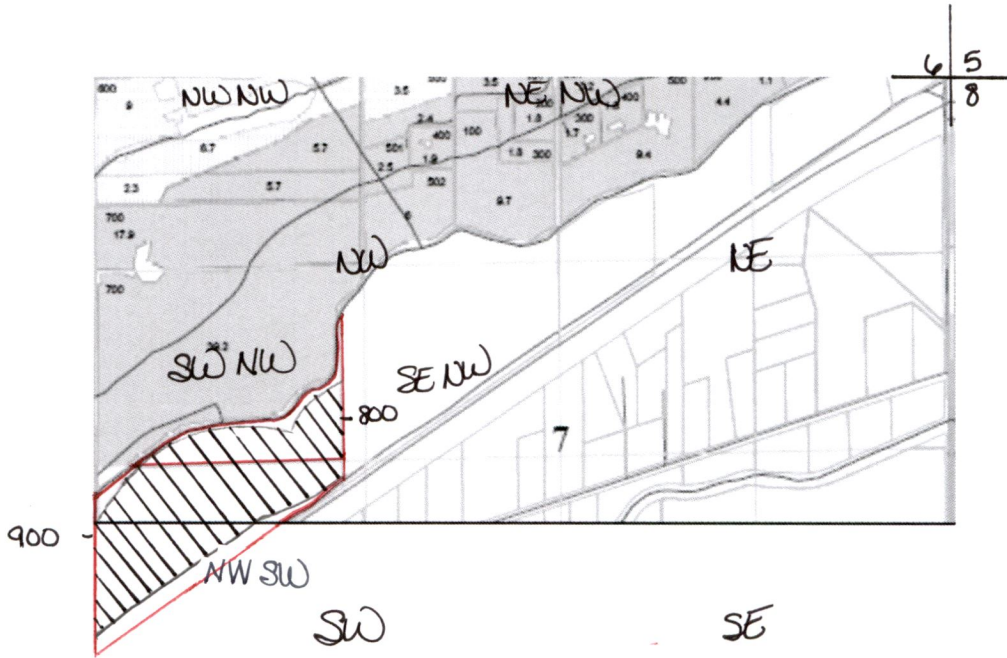


Esri, HERE, Garmin, © OpenStreetMap contributors, and the GIS user community. Source: Esri, DigitalGlobe, GeoEye, Earthstar Geographics, Hermiston Irrigation District. Copyright Hermiston Irrigation District. All Rights Reserved.

# T4N, R29E, Sec 07

QQ NW SW 19.0 Acres Tax Lot 900

QQ SW NW 6.0 Acres Tax Lot 800



RECEIVED

AUG 17 2018

RECEIVED  
OWRD

AUG 20 2018

OWRD

1 Inch = 1320 Feet

2018 Hermiston Irrigation District  
Permit to Use Surface Water  
Proposed "TO" Lands

# Woods Deb



7/12/2018, 10:25:58 AM

- Override 1
- Taxlots by Owner\_Query result
- DistrictBoundary
- CountyRoads
- Taxlots
- Pipeline
- Canals
- WaterRights

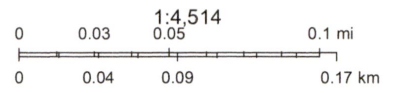
RECEIVED

AUG 20 2018

AUG 17 2018

OWRD

OWRD

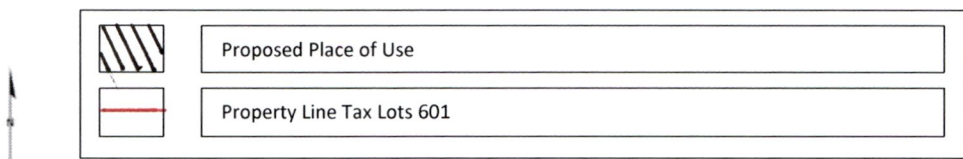
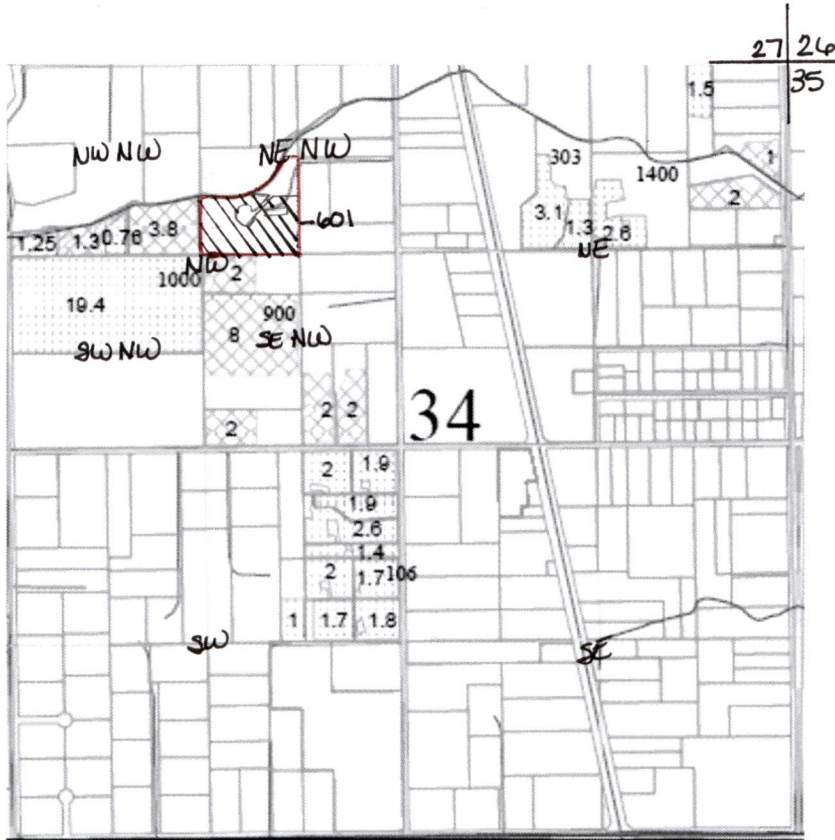


Esri, HERE, Garmin, © OpenStreetMap contributors, and the GIS user community. Source: Esri, DigitalGlobe, GeoEye, Earthstar Geographics, Hermiston Irrigation District. Copyright Hermiston Irrigation District. All Rights Reserved.

# T5N, R28E, Sec 34

## QQ NE NW 5.0 Acres Tax Lot 601

RECEIVED  
 AUG 17 2018  
 OWRD  
 RECEIVED  
 AUG 20 2018  
 OWRD



1 Inch = 1320 Feet

2018 Hermiston Irrigation District  
 Permit to Use Surface Water  
 Proposed "TO" Lands



AUG 17 2018

OWBRD

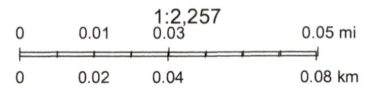
5N28E34 TAXLOT 601  
Bailey Wendell

FOR REFERENCE ONLY - NOT TO SCALE



7/12/2018, 11:42:29 AM

- Taxlots by Owner\_Query result
- Taxlots
- Override 1
- Canals
- DistrictBoundary



Esri, HERE, Garmin, © OpenStreetMap contributors, and the GIS user community, Source: Esri, DigitalGlobe, GeoEye, Earthstar Geographics, Hermiston Irrigation District. Copyright Hermiston Irrigation District. All Rights Reserved.

# T5N, R28E, Sec 36

## QQ SW NE 4.0 Acres Tax Lot 200

RECEIVED

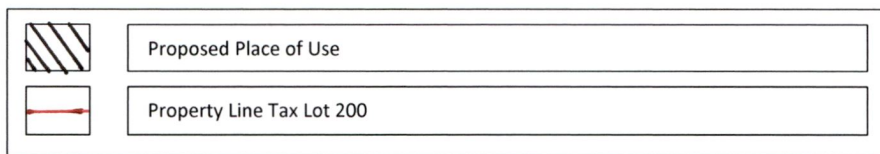
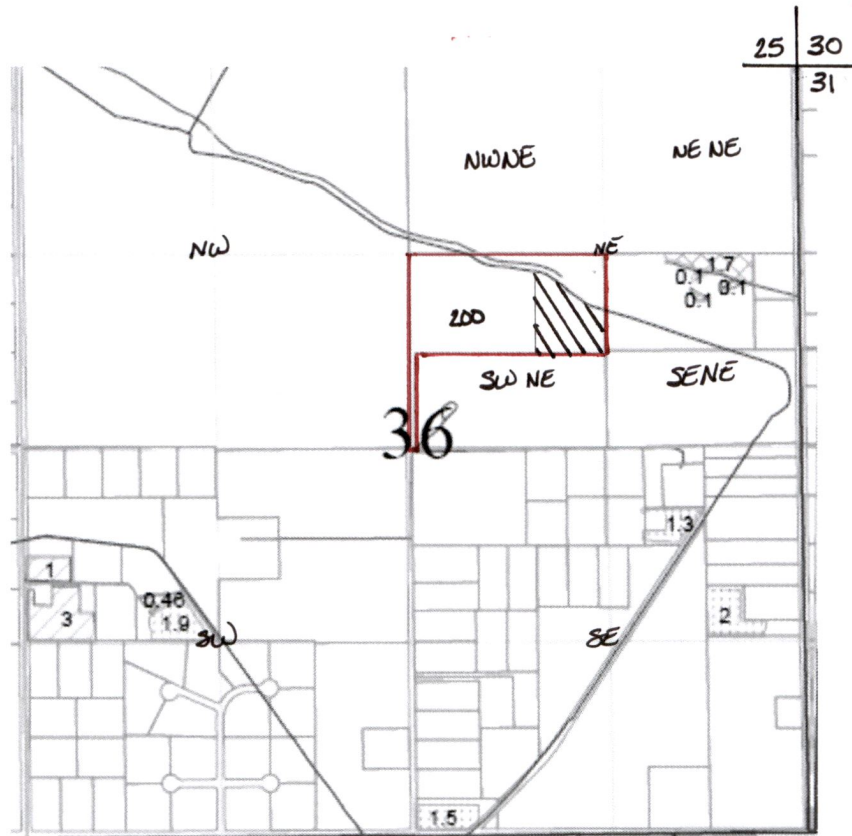
AUG 17 2018

OWRD

RECEIVED

AUG 20 2018

OWRD



1 Inch = 1320 Feet

2018 Hermiston Irrigation District  
Permit to Use Surface Water  
Proposed "TO" Lands

5N28E 36 TAXLOT 200  
Christopherson N

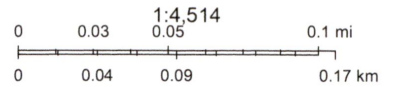
FOR REFERENCE ONLY - NOT TO SCALE



7/12/2018, 11:57:35 AM

- Taxlots by Owner\_Query result
- DistrictBoundary
- Taxlots
- Override 1
- CountyRoads
- Canals

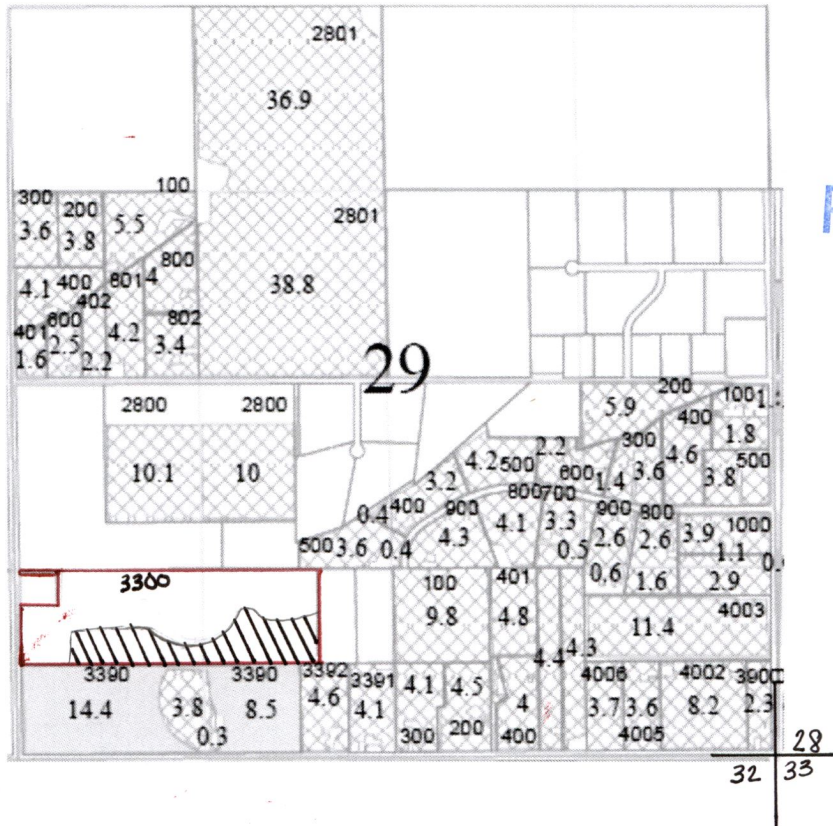
RECEIVED  
AUG 20 2018  
OWRD  
RECEIVED  
AUG 17 2018  
OWRD



Esri, HERE, Garmin, © OpenStreetMap contributors, and the GIS user community. Source: Esri, DigitalGlobe, GeoEye, Earthstar Geographics, Hermiston Irrigation District. Copyright Hermiston Irrigation District. All Rights Reserved.

# T5N, R29E, Sec 29

## QQ SW SW 10.0 Acres Tax Lot 3300



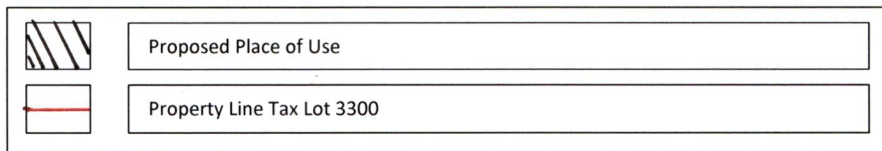
RECEIVED

AUG 17 2018

OWRD  
RECEIVED

AUG 20 2018

OWRD



1 Inch = 1320 Feet

2018 Hermiston Irrigation District  
Permit to Use Surface Water  
Proposed "TO" Lands

5N29E 29 TAX LOT 3300  
Ortiz Hector

FOR REFERENCE ONLY - NOT TO SCALE

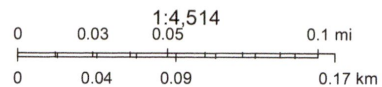


7/12/2018, 1:30:35 PM

-  Override 1
-  DistrictBoundary
-  Taxlots
-  CountyRoads

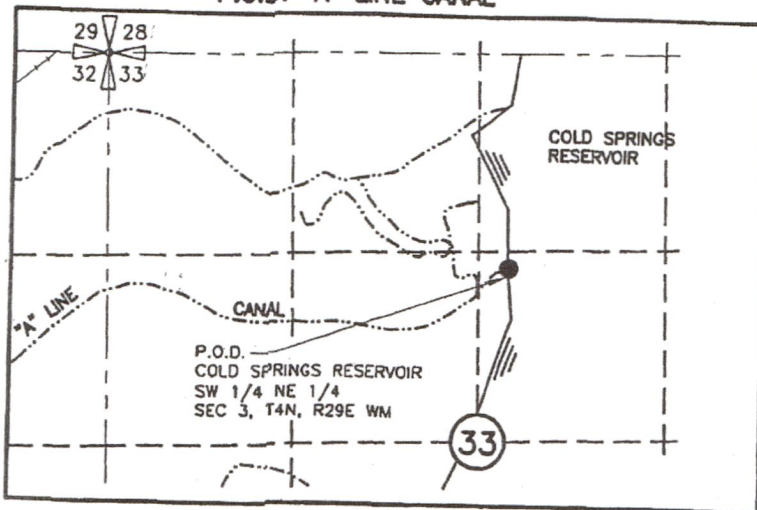
RECEIVED  
AUG 20 2018  
OWRD

RECEIVED  
AUG 17 2018  
OWRD



Esri, HERE, Garmin, © OpenStreetMap contributors, and the GIS user community. Source: Esri, DigitalGlobe, GeoEye, Earthstar Geographics, Hermiston Irrigation District. Copyright Hermiston Irrigation District. All Rights Reserved.

P.O.D. "A" LINE CANAL



RECEIVED

AUG 17 2018

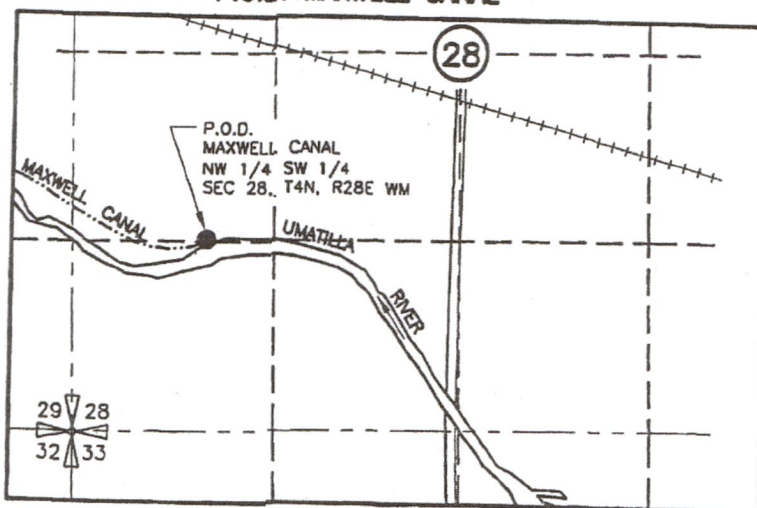
OWRD

RECEIVED

AUG 20 2018

OWRD

P.O.D. MAXWELL CANAL



P.O.D. US FEED CANAL

