

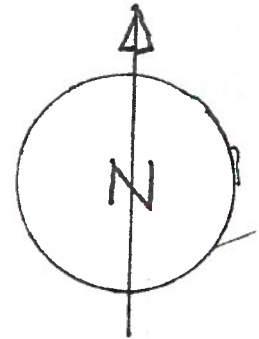
RECEIVED

MAY 10 2019

OWRD

T.2S.R3E.W.M.

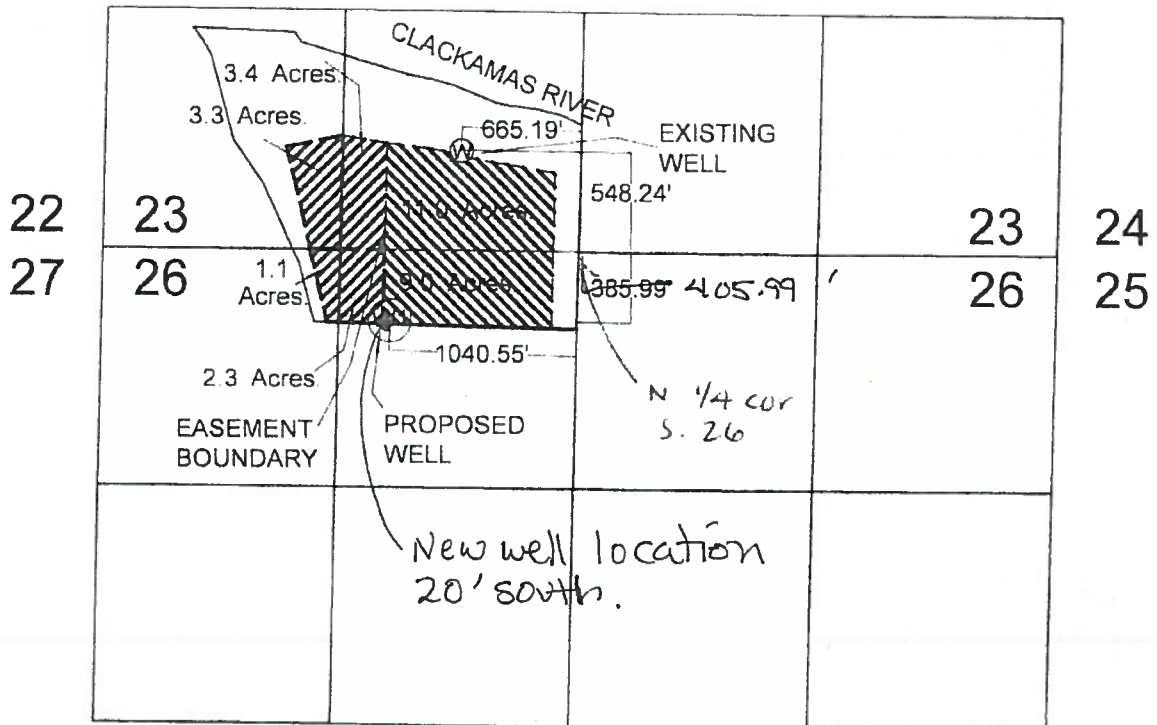
Amended map Application  
G18729



RECEIVED

AUG 27 2018

OWRD



TAX LOT: 23E 23 00900

APPLICATION MAP  
SCALE 1" = 1000'

Proposed well located  $405.99'$   ~~$385.77'$~~  S,  $1040.55'$  W fr.  
N  $\frac{1}{4}$  cor. S. 26

G-18729