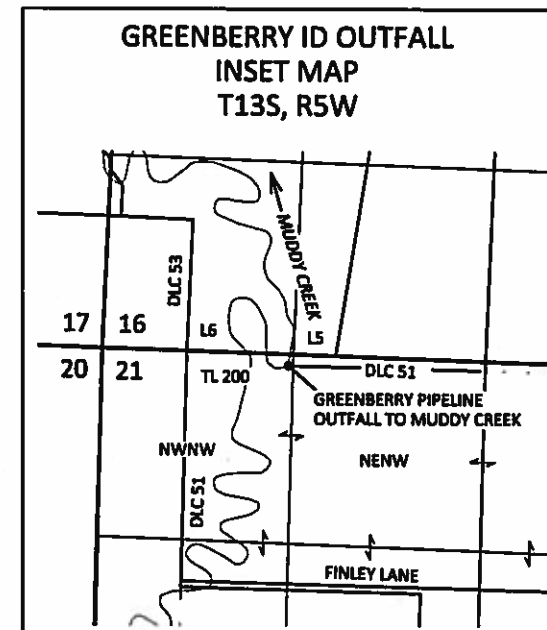
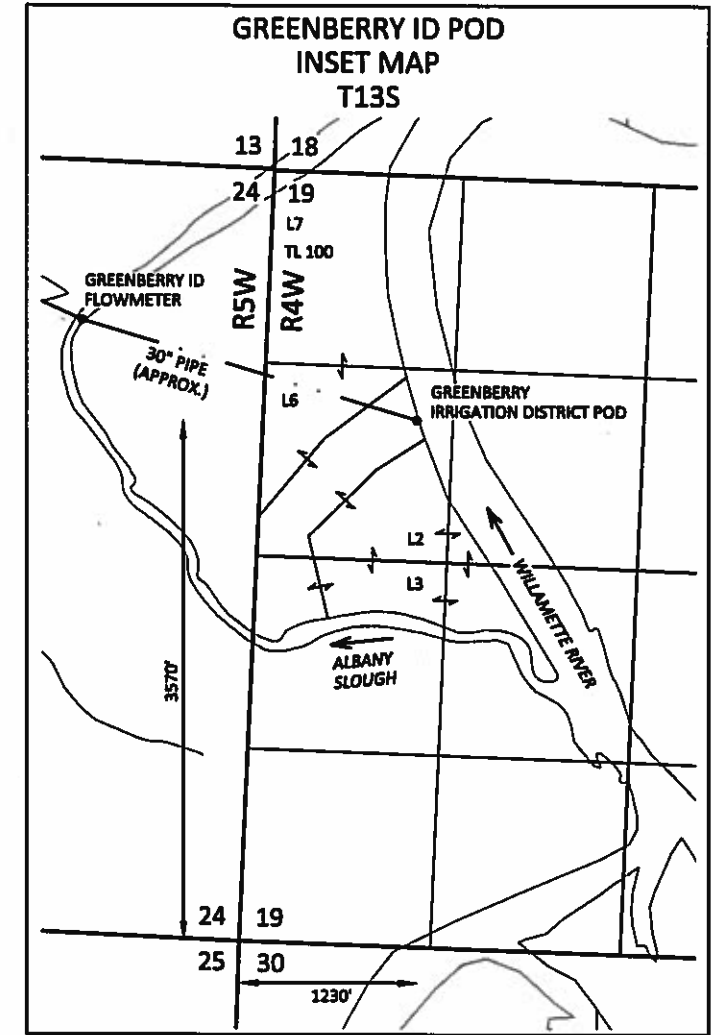
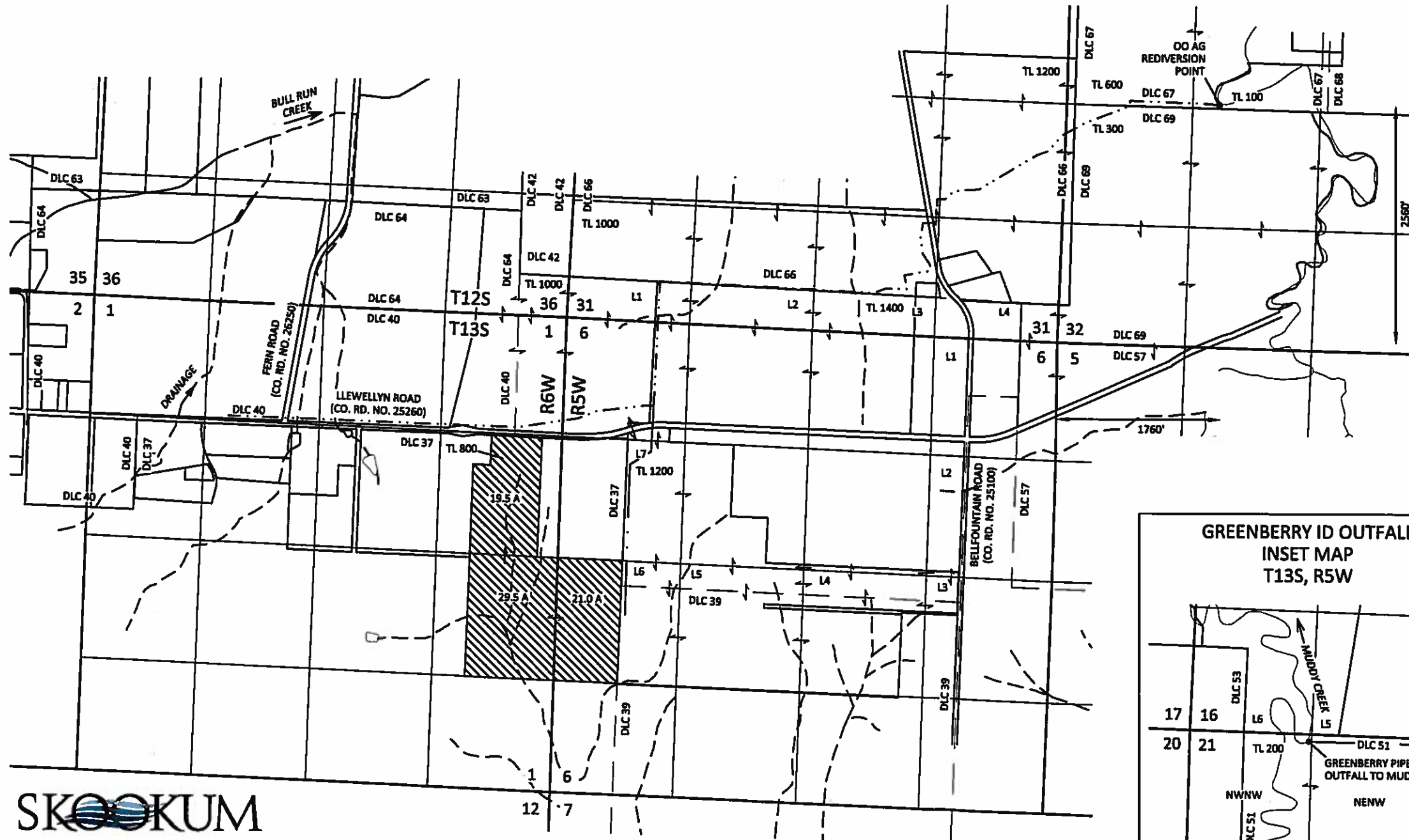


Section 36, T12S, R6W, W.M.,
 Section 1, T13S, R6W, W.M.,
 Sections 31 & 32, T12S, R5W, W.M.,
 Section 6, T13S, R5W, W.M.,
 Section 19, T13S, R4W, W.M.,
 Benton County, Oregon

SURFACE WATER APPLICATION MAP
O.O. Agriculture LLC



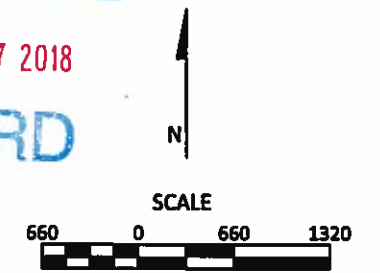
EXPLANATION

- PROPOSED PLACE OF USE
70.0 ACRES
- POINT OF DIVERSION (POD), REDIVERSION POINT, OUTFALL
- PIPELINE (APPROX.)

RECEIVED

SEP 07 2018

OWRD



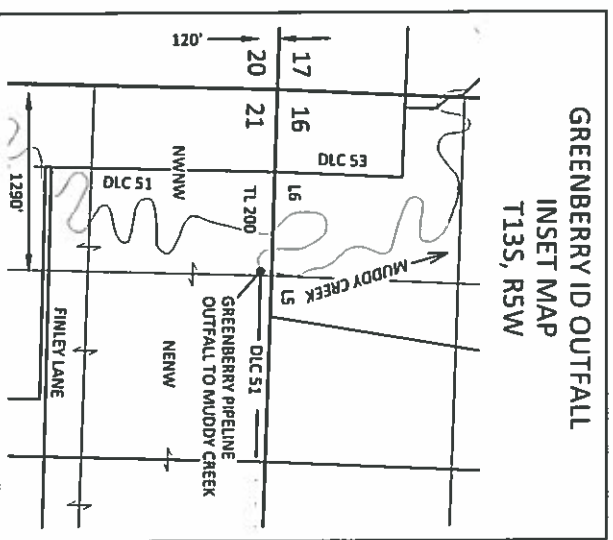
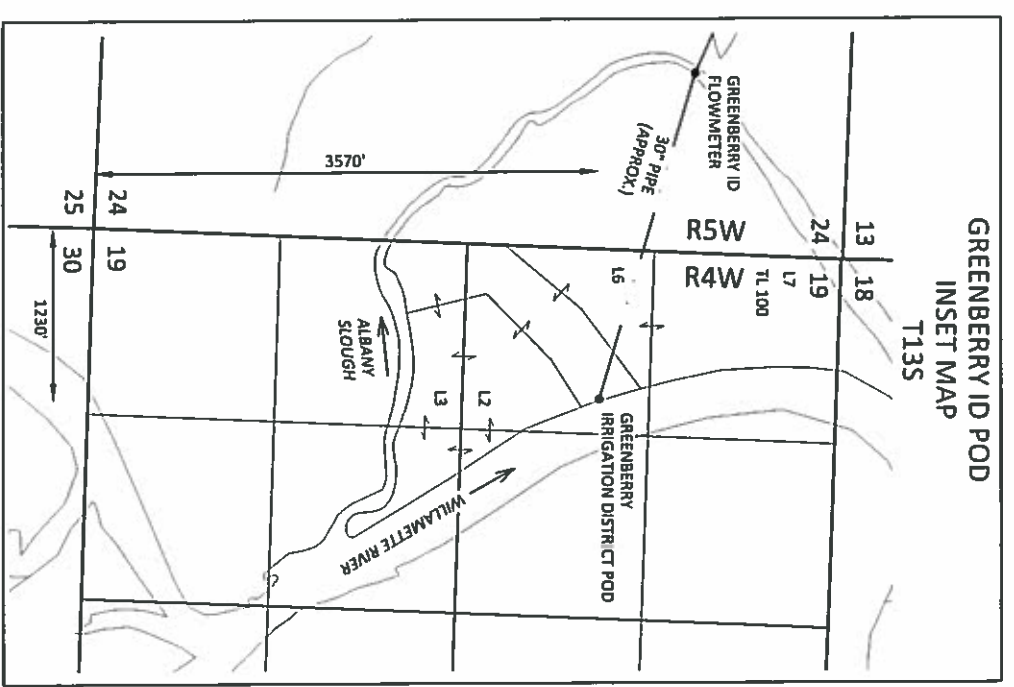
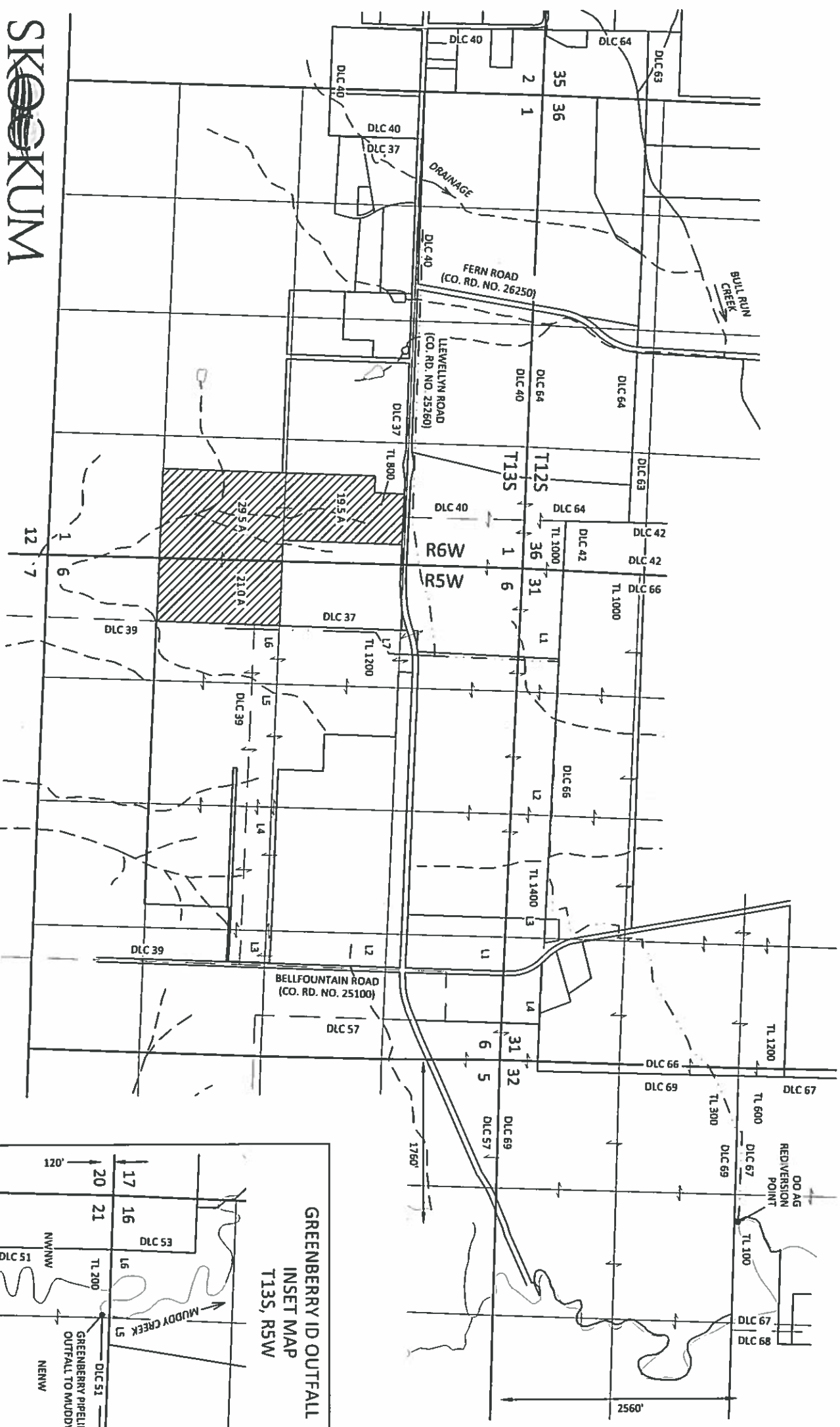
August 22, 2018

This map is not intended to provide legal dimensions or locations of property ownership lines

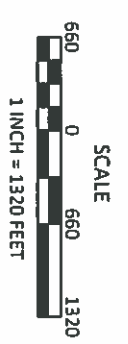
Figure 1

Section 36, T12S, R6W, W.M.,
 Section 1, T13S, R6W, W.M.,
 Sections 31 & 32, T12S, R5W, W.M.,
 Section 6, T13S, R5W, W.M.,
 Section 19, T13S, R4W, W.M.,
 Benton County, Oregon

AMENDED SURFACE WATER APPLICATION MAP
 O.O. Agriculture LLC



EXPLANATION
 [Hatched Box] PROPOSED PLACE OF USE
 70.0 ACRES
 [Dot] POINT OF DIVERSION (POD), REDIVERSION POINT, OUTFALL
 [Dashed Line] PIPELINE (APPROX.)



December 20, 2018

This map is not intended to provide legal dimensions or locations of property ownership lines

Figure 1

SUPERSEDING

SKOOKUM

WATER ASSOCIATES INC
 1626 VICTORIAN WAY
 EUGENE, OR 97401
 (503) 319-8926

RECEIVED

DEC 20 2018

OWRD

S-86667