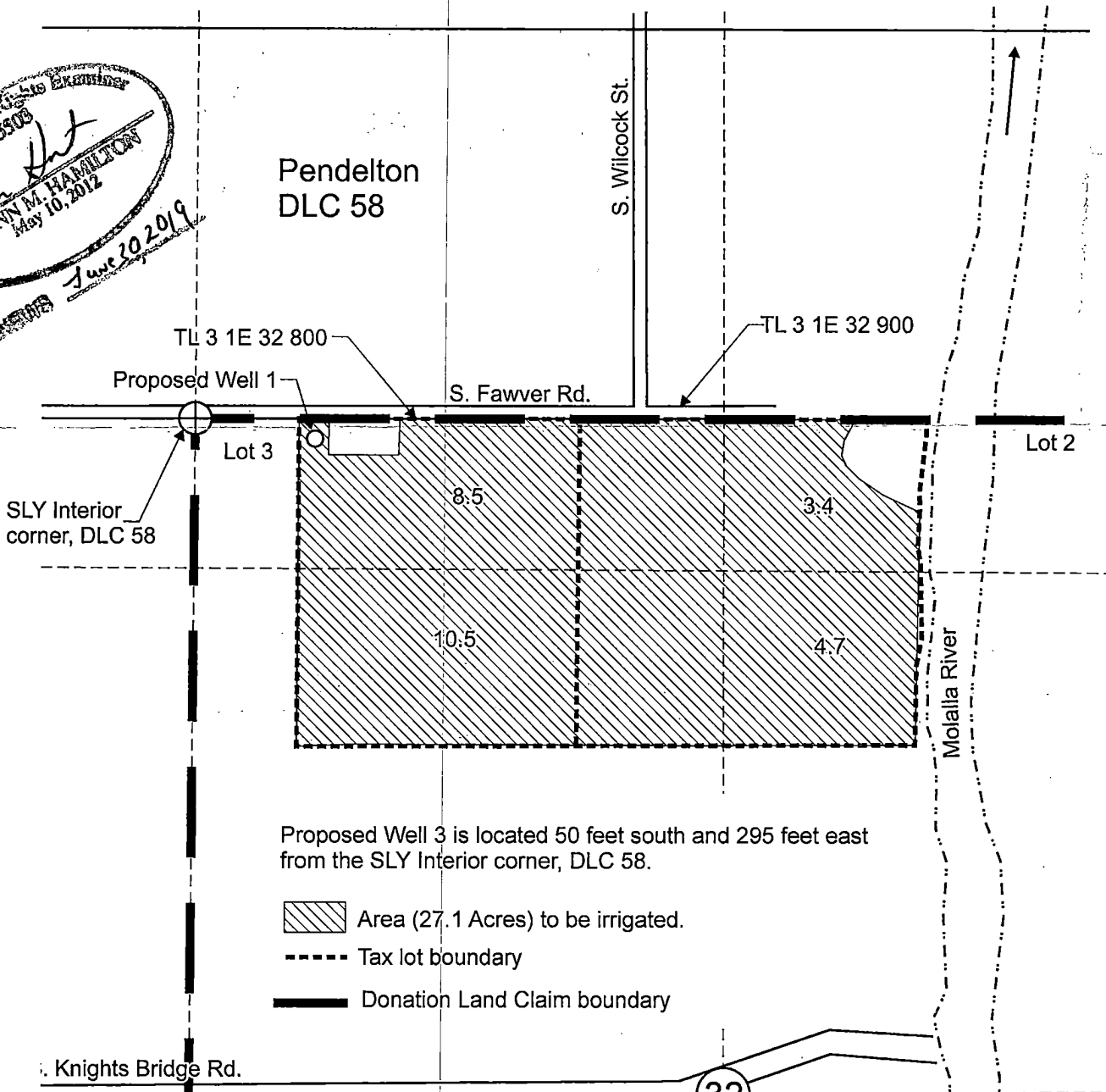


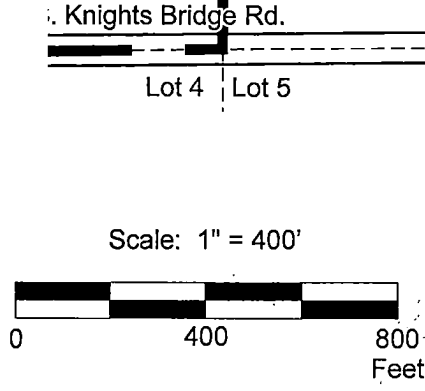
T.3S. R.1E. Section 32, W.M.

Doann M. HAMILTON
 May 10, 2012
 June 20 2019



Proposed Well 3 is located 50 feet south and 295 feet east from the SLY Interior corner, DLC 58.

- Area (27.1 Acres) to be irrigated.
- Tax lot boundary
- Donation Land Claim boundary

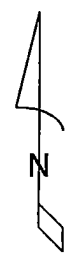


RECEIVED

SEP 14 2018

OWRD

This map was prepared for the purpose of identifying the location of a water right only and is not intended to provide legal dimensions or location of property ownership lines.



Water Right Application Map

Joann and Bud Fawver
T.3S. R.1E. Section 32, W.M.

Pacific Hydro-Geology Inc.

08/2018

6-10-2012

FawverGWAppMap.cdr

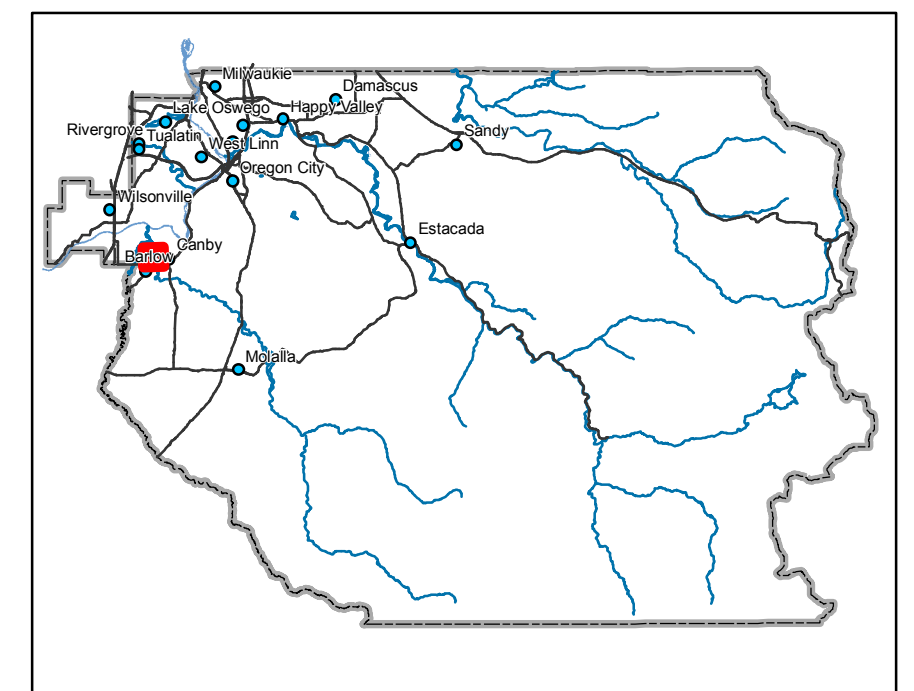
SECTION 32 T.3S. R.1E. W.M.
CLACKAMAS COUNTY
1" = 400'

D. L. C.'S
C. PENDLETON NO. 58
LUCIUS A. SEELY NO 57 & 48

Cancelled Taxlots

- 1000E1
- 1100E1
- 1700E1
- 2201

- Parcel Boundary
- Private Road ROW
- Historical Boundary
- Railroad Centerline
- TaxCodeLines
- Map Index
- WaterLines
- Land Use Zoning
- Plats
- Water
- Corner
- Section Corner
- 1/16th Line
- Govt Lot Line
- DLC Line
- Meander Line
- PLSS Section Line
- Historic Corridor 40'
- Historic Corridor 20'



THIS MAP IS FOR ASSESSMENT
PURPOSES ONLY

