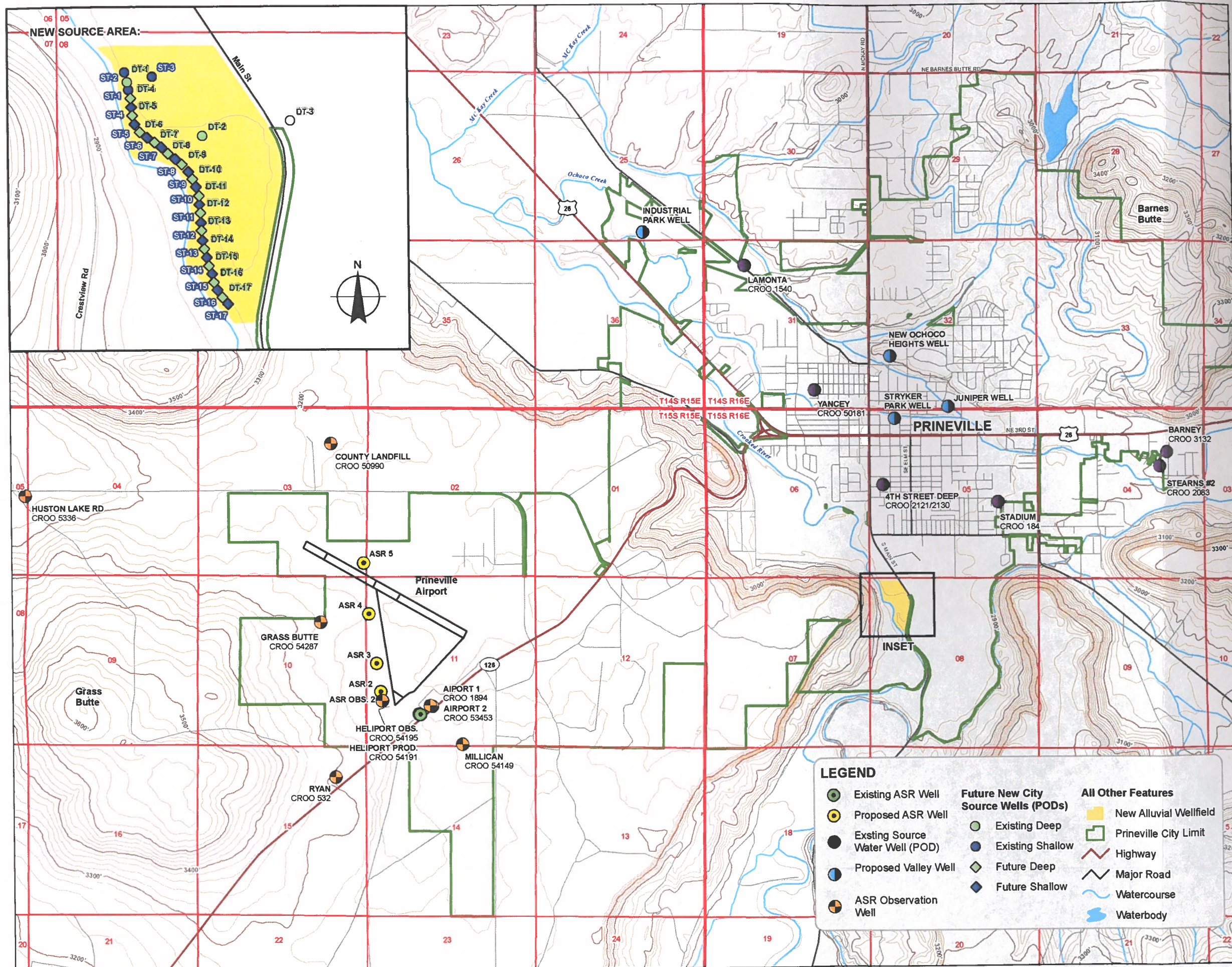


Limited License Map

ASR Limited License Application and Work Plan

City of Prineville



POD LOCATION DESCRIPTIONS
PROPOSED ASR WELL AND FUTURE WELL SITES
 Heliport Production Well: Located 1070 feet North and 1710 feet East from the SW corner of Section 11, Township 15 South, Range 15 East (W.M.)
 Future ASR Well 2: Located 1691 feet North and 482 feet East from the SW corner of Section 11, Township 15 South, Range 15 East (W.M.)
 Future ASR Well 3: Located 2569 feet North and 327 feet East from the SW corner of Section 11, Township 15 South, Range 15 East (W.M.)
 Future ASR Well 4: Located 1141 feet South and 83 feet East from the NW corner of Section 11, Township 15 South, Range 15 East (W.M.)
 Future ASR Well 5: Located 442 feet North and 86 feet West from the SE corner of Section 3, Township 15 South, Range 15 East (W.M.)

ASR SOURCE WATER POINTS OF DIVERSION
 New Ochoco Heights Well: Located 1673 feet North and 677 feet East from the SE Corner of Section 32, Township 14 South, Range 16 East (W.M.)
 Industrial Park Well: Located 277 feet North and 1986 feet West from the NW Corner of Section 31, Township 14 South, Range 15 East (W.M.)
 Stryker Park Well: Located 277 feet South and 812 feet East from the SW Corner of Section 32, Township 15 South, Range 16 East (W.M.)
 Juniper Well: Located 97 feet North and 2493 feet East from the SW Corner of Section 32, Township 15 South, Range 16 East (W.M.)
 CROO 184 (Stadium Well): Located 2122 feet North and 461 feet West from the SE corner of Section 5, Township 15 South, Range 16 East (W.M.)
 CROO 2083 (Stearns #2): Located 1810.2 feet South and 1151.5 feet East from the N 1/4 corner of Section 4, Township 15 South, Range 16 East (W.M.)
 CROO 3132 (Barney): Located 1315 feet South and 1370 feet East from the N 1/4 corner of Section 4, Township 15 South, Range 16 East (W.M.)
 CROO 50181 (Yancey): Located 1070 feet North and 1370 feet East and 55 degrees and 0 minutes East from the 1/4 section corner south line of Section 31, Township 14 South, Range 16 East (W.M.)
 CROO 1540 (Lamonta): Located 58 degrees South and 13 minutes East, 1447 feet from the NW corner of Section 31, Township 14 South, Range 16 East (W.M.)
 CROO 2121 (4th Street Deep): Located 375 feet North and 370 feet East from the W 1/4 corner of Section 5, Township 15 South, Range 16 East (W.M.)
 D-1 (CROO 54593): Located 422 feet South and 400 feet East from the NW corner of Section 8, Township 15 South, Range 16 East (W.M.)
 S-1 (CROO 54587): Located 471 feet South and 406 feet East from the NW corner of Section 8, Township 15 South, Range 16 East (W.M.)
 D-2 (CROO 54592): Located 585 feet South and 793 feet East from the NW corner of Section 8, Township 15 South, Range 16 East (W.M.)
 D-3: Located 516 feet South and 438 feet East from the NW corner of Section 8, Township 15 South, Range 16 East (W.M.)
 S-2: Located 581 feet South and 468 feet East from the NW corner of Section 8, Township 15 South, Range 16 East (W.M.)
 D-4: Located 601 feet South and 508 feet East from the NW corner of Section 8, Township 15 South, Range 16 East (W.M.)
 S-3: Located 621 feet South and 584 feet East from the NW corner of Section 8, Township 15 South, Range 16 East (W.M.)
 D-5: Located 657 feet South and 811 feet East from the NW corner of Section 8, Township 15 South, Range 16 East (W.M.)
 S-4: Located 694 feet South and 654 feet East from the NW corner of Section 8, Township 15 South, Range 16 East (W.M.)
 D-6: Located 801 feet South and 508 feet East from the NW corner of Section 8, Township 15 South, Range 16 East (W.M.)
 S-5: Located 821 feet South and 700 feet East from the NW corner of Section 8, Township 15 South, Range 16 East (W.M.)
 S-6: Located 789 feet South and 731 feet East from the NW corner of Section 8, Township 15 South, Range 16 East (W.M.)
 D-7: Located 840 feet South and 759 feet East from the NW corner of Section 8, Township 15 South, Range 16 East (W.M.)
 S-7: Located 888 feet South and 784 feet East from the NW corner of Section 8, Township 15 South, Range 16 East (W.M.)
 D-8: Located 921 feet South and 799 feet East from the NW corner of Section 8, Township 15 South, Range 16 East (W.M.)
 S-8: Located 1004 feet South and 809 feet East from the NW corner of Section 8, Township 15 South, Range 16 East (W.M.)
 D-9: Located 1061 feet South and 815 feet East from the NW corner of Section 8, Township 15 South, Range 16 East (W.M.)
 S-9: Located 1116 feet South and 808 feet East from the NW corner of Section 8, Township 15 South, Range 16 East (W.M.)
 D-10: Located 1178 feet South and 796 feet East from the NW corner of Section 8, Township 15 South, Range 16 East (W.M.)
 S-10: Located 1232 feet South and 800 feet East from the NW corner of Section 8, Township 15 South, Range 16 East (W.M.)
 D-11: Located 1267 feet South and 836 feet East from the NW corner of Section 8, Township 15 South, Range 16 East (W.M.)
 S-11: Located 1320 feet South and 888 feet East from the NW corner of Section 8, Township 15 South, Range 16 East (W.M.)
 D-12: Located 1372 feet South and 879 feet East from the NW corner of Section 8, Township 15 South, Range 16 East (W.M.)
 S-12: Located 1420 feet South and 898 feet East from the NW corner of Section 8, Township 15 South, Range 16 East (W.M.)
 D-13: Located 1479 feet South and 909 feet East from the NW corner of Section 8, Township 15 South, Range 16 East (W.M.)
 S-13: Located 1527 feet South and 949 feet East from the NW corner of Section 8, Township 15 South, Range 16 East (W.M.)

ASR OBSERVATION WELLS
 Airport Well 1: Located 1210 feet North and 1950 feet East from the SW corner of Section 11, Township 15 South, Range 15 East (W.M.)
 Airport Well 2: Located 1165 feet North and 1990 feet East from the SW corner of Section 11, Township 15 South, Range 15 East (W.M.)
 Millican Well (Airport Well 3): Located 55 feet North and 3000 feet East from the SW corner of Section 11, Township 15 South, Range 15 East (W.M.)
 CROO 53989 (Heliport Observation Well): Located 1238 feet North and 1508 feet East from the SW corner of Section 11, Township 15 South, Range 15 East (W.M.)
 ASR Observation Well 2: Located 1404 feet North and 506 feet East from the SW corner of Section 11, Township 15 South, Range 15 East (W.M.)
 CROO 532 (Ryan Well): Located 895 feet South and 952 feet West from the SW corner of Section 11, Township 15 South, Range 15 East (W.M.)
 CROO 53361 (Houston Lake Rd): Located 183 feet South and 77 feet West from the W 1/4 corner of Section 4, Township 15 South, Range 15 East (W.M.)
 CROO 54287 (Grass Butte Well): Located 1472 feet South and 1493.15 feet West from the NE corner of Section 10, Township 15 South, Range 15 East (W.M.)
 CROO 50990 (County Landfill Well): Located 1067 feet South and 1161 feet West from the NW corner of Section 3, Township 15 South, Range 15 East (W.M.)

LEGEND

Existing ASR Well	Proposed ASR Well	Existing Source Water Well (POD)	Proposed Valley Well	ASR Observation Well
Existing Deep	Existing Shallow	Future Deep	Future Shallow	
New Alluvial Wellfield	Prineville City Limit	Highway	Major Road	Watercourse
	Waterbody			

MAP NOTES:
 POD = Point of Diversion
 Date: October 1, 2018
 Data Sources: ESRI, USGS, DigiGlobe 2016

0 1,500 3,000 4,500 Feet