

RECEIVED

JAN 22 2019

OWRD

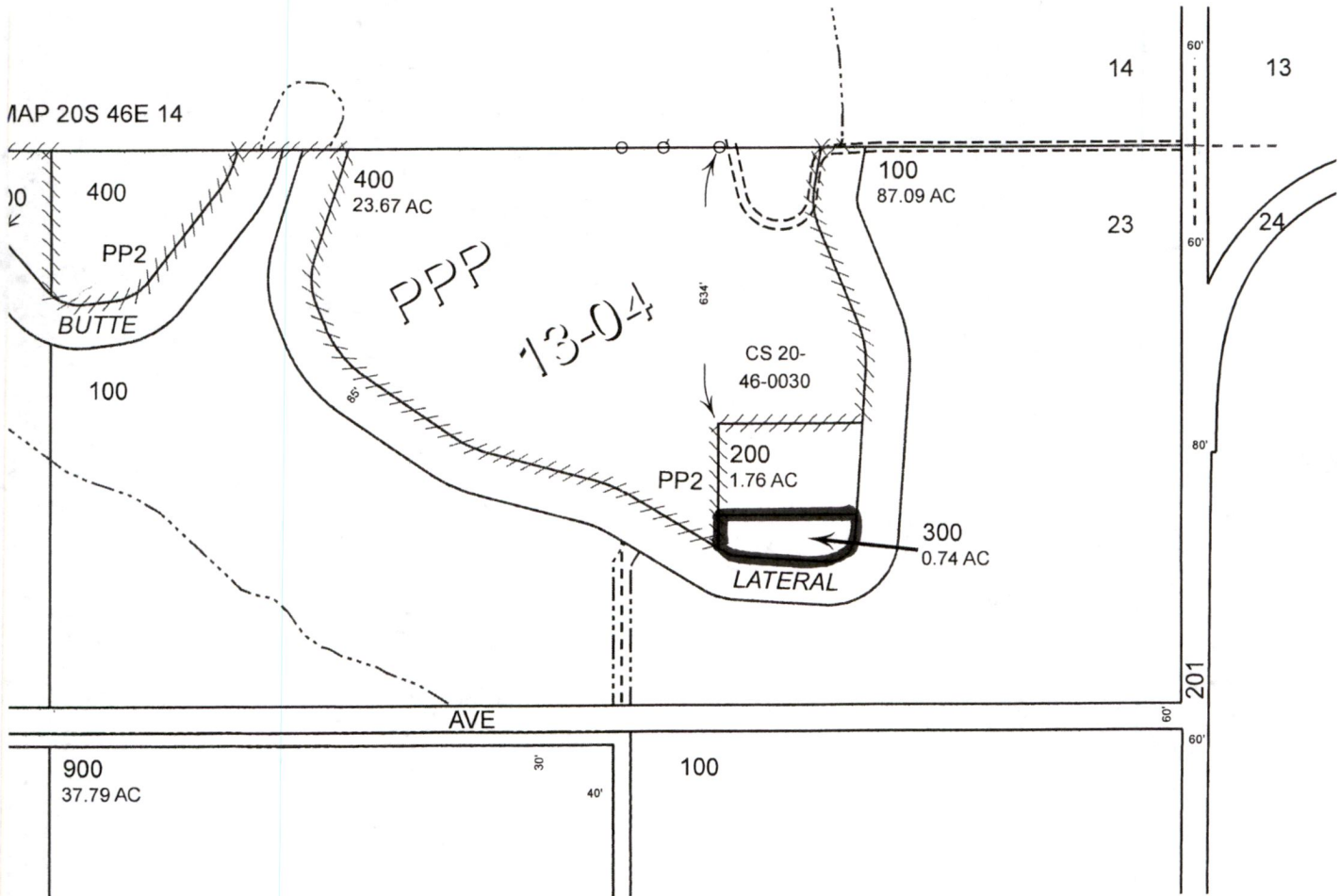


NORTH

Compliments of  
MALHEUR COUNTY  
TITLE COMPANY INC  
Map No. 204623  
Tax Lot 300  
This sketch is furnished  
to assist in property  
location and the company  
assumes no liability  
for inaccuracies.

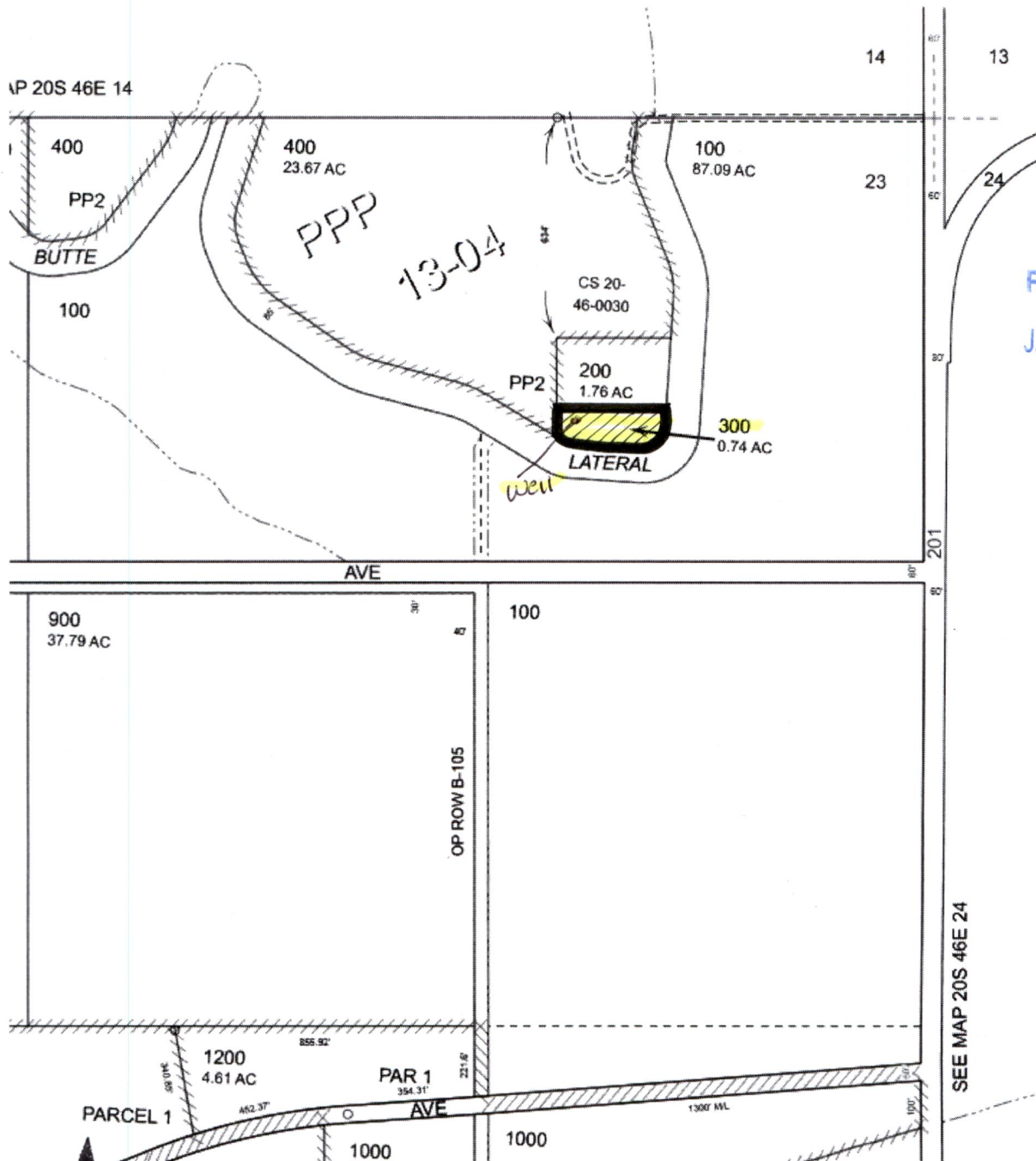
3 T.20S. R.46E. W.M.  
EUR COUNTY

1" = 400'



G-18781

Section 23 Township 20S, Range 46E, Tax Lot # 300



RECEIVED  
 JAN 22 2019  
 OWRD

SEE MAP 20S 46E 24

NORTH

Compliments of  
**MALHEUR COUNTY**  
**TITLE COMPANY INC**  
 Map No. 204623  
 Tax Lot 300

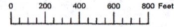
This sketch is furnished  
 to assist in property  
 location and the company  
 assumes no liability  
 for inaccuracies.

**Malheur County**  
**Title Company Inc.**  
 81 S. Oregon St.  
 Ontario, Oregon 97914

G-18781

6-18-78/1

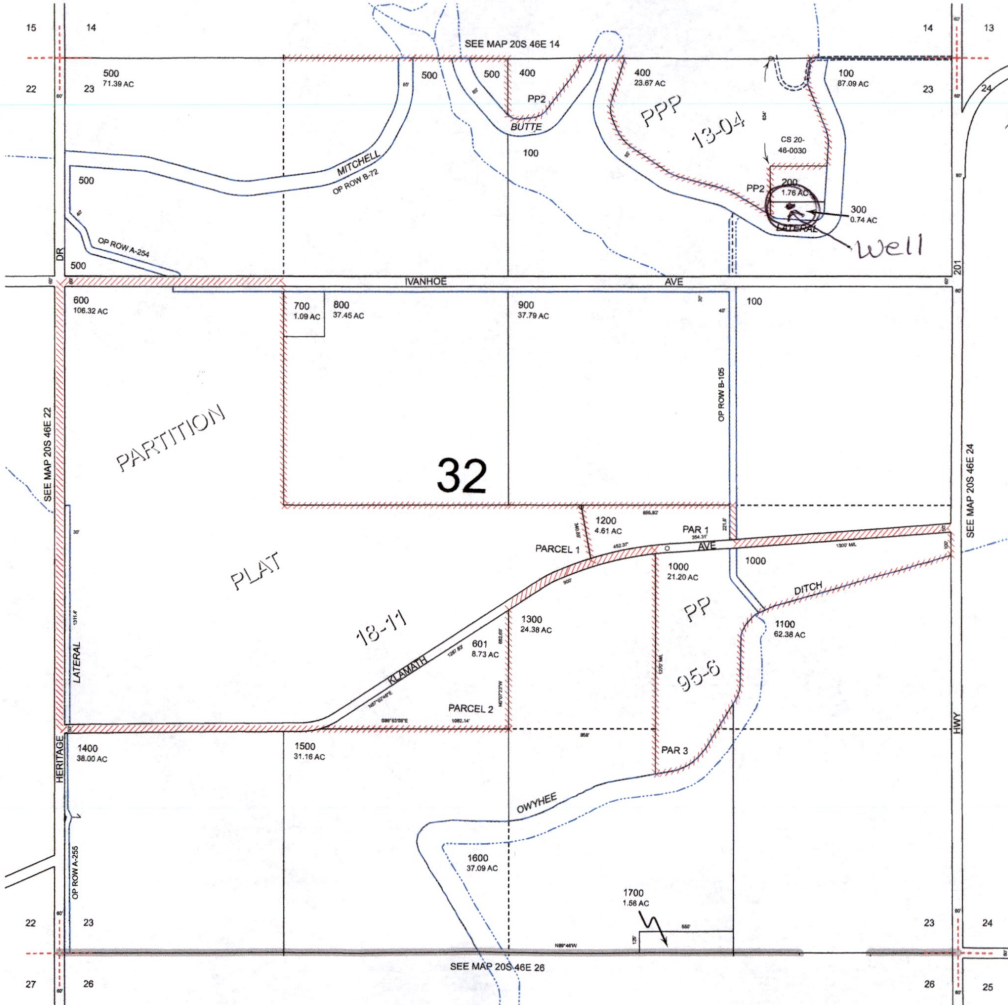
THIS MAP WAS PREPARED FOR ASSESSMENT PURPOSE ONLY



SECTION 23 T.20S. R.46E. W.M. MALHEUR COUNTY

20S46E23

1 1/2 in = 1320 Approx



902 FTW and 823 FT S from the NE NE of section 23

NORTH ↑

RECEIVED DEC 31 2018

RECEIVED JAN 22 2019

OWRD

Revised: MA 10/10/2018

20S46E23