



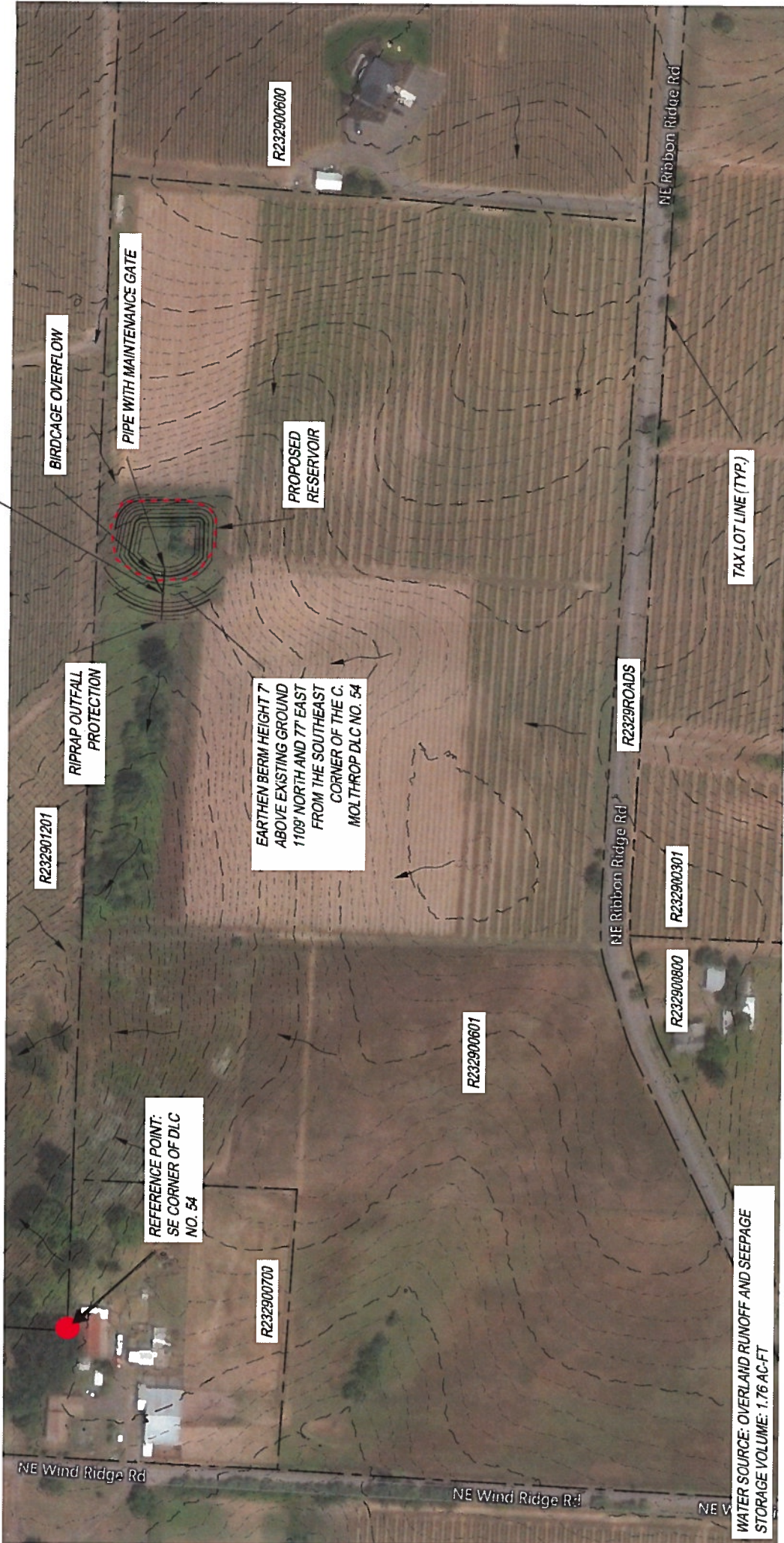
• SE corner, DLC 54

RECEIVED

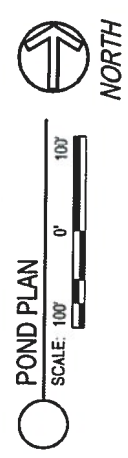
JAN 22 2019

OWRD

R-88696



IN GOVERNMENT LOT 4, SECTION 29, TOWNSHIP
 2 SOUTH, RANGE 3 WEST, WILLAMETTE MERIDIAN
 1/4 1/4: NW 1/4 of the SE 1/4, Section 29
 TAXLOT: R232900601



LEGEND

—	EXISTING CONTOUR - 2'
- - -	EXISTING CONTOUR - 10'
—	PROPOSED CONTOUR - 2'
—	PROPOSED CONTOUR - 10'
→	FLOW ARROW

WATER SOURCE: OVERLAND RUNOFF AND SEEPAGE
 STORAGE VOLUME: 1.76 AC-FT

TAXLOT LINES ARE APPROXIMATE.

RECEIVED
 JAN 2 2 2019

OWRD

R-88696