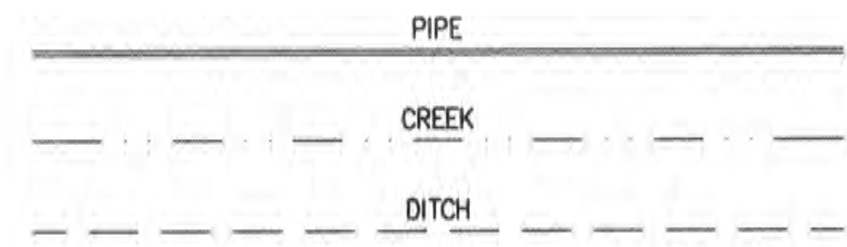
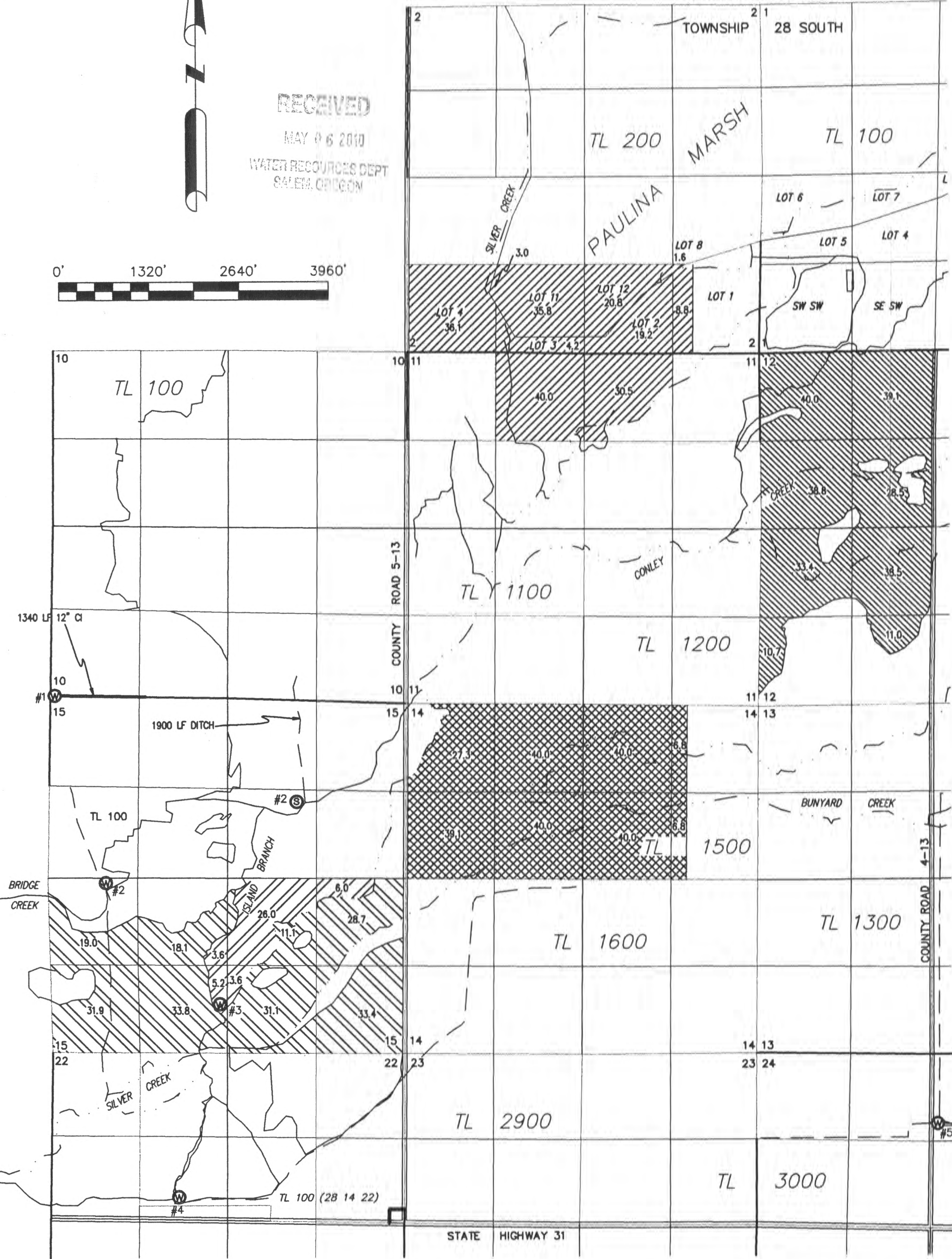
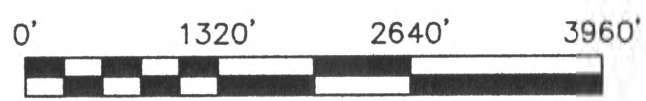

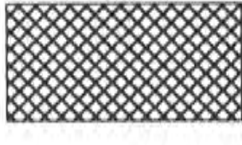

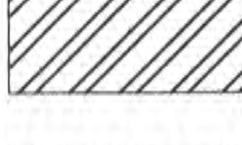
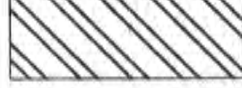




RECEIVED  
MAY 06 2010  
WATER RESOURCES DEPT  
SALEM, OREGON



-  200 ACRES PRIMARY IRRIGATION FROM ITEM #3 (HOUGH) OF SILVER CREEK DECREE OVERLAPS PRIMARY IRRIGATION FROM CERTIFICATE 2060 AND SUPPLEMENTAL IRRIGATION FROM PERMIT G10039
-  240 ACRES PRIMARY IRRIGATION FROM ITEM #4 (PORTER) OF SILVER CREEK DECREE OVERLAPS SUPPLEMENTAL IRRIGATION FROM PERMIT G 10039
-  240 ACRES PRIMARY IRRIGATION FROM ITEM #6 (CONLEY) OF SILVER CREEK DECREE OVERLAPS SUPPLEMENTAL IRRIGATION FROM PERMIT G 10039
-  44.4 ACRES PRIMARY IRRIGATION FROM "THE ISLAND" ITEM #7 (SMALL) OF SILVER CREEK DECREE OVERLAPS SUPPLEMENTAL IRRIGATION FROM PERMIT G 10039
-  207.1 ACRES PRIMARY IRRIGATION FROM ISLAND BRANCH ITEM #7 (SMALL) OF SILVER CREEK DECREE OVERLAPS SUPPLEMENTAL IRRIGATION FROM PERMIT G 10039

**NARRATIVE:**

THE PURPOSE OF THIS MAP IS TO SHOW THE LANDS IRRIGATED UNDER ITEMS #3, #4, #6, AND #7 OF THE SILVER CREEK DECREE BY THE OREGON SUPREME COURT IN 1909 AND RECORDED IN VOLUME 7, PAGES 523 TO 536. THIS MAP HAS NO INTENT TO PROVIDE LEGAL DIMENSIONS OR THE LOCATION OF PROPERTY LINES. THE TOPOGRAPHY SHOWN HEREON WAS DIGITIZED FROM 2006 NRCS AERIAL IMAGERY AND USGS QUAD PANELS (SILVER LAKE 1967 AND TUFF BUTTE 1974). GOVERNMENT LAND OFFICE PLATS WERE USED TO IDENTIFY AREAS OF SECTIONS AND SUBDIVISIONS THEREOF.

**WATER RIGHTS EXHIBIT**

DRAWN: sdm	DATE 12/29/09	BELL A LAND & CATTLE P.O. BOX 97 LA PINE, OR 97739 EXHIBIT2.DWG
APPROVED:	DATE	
SCALE: 4" = 1 MILE	SHEET 1 of 1	PROJECT NO. 09066

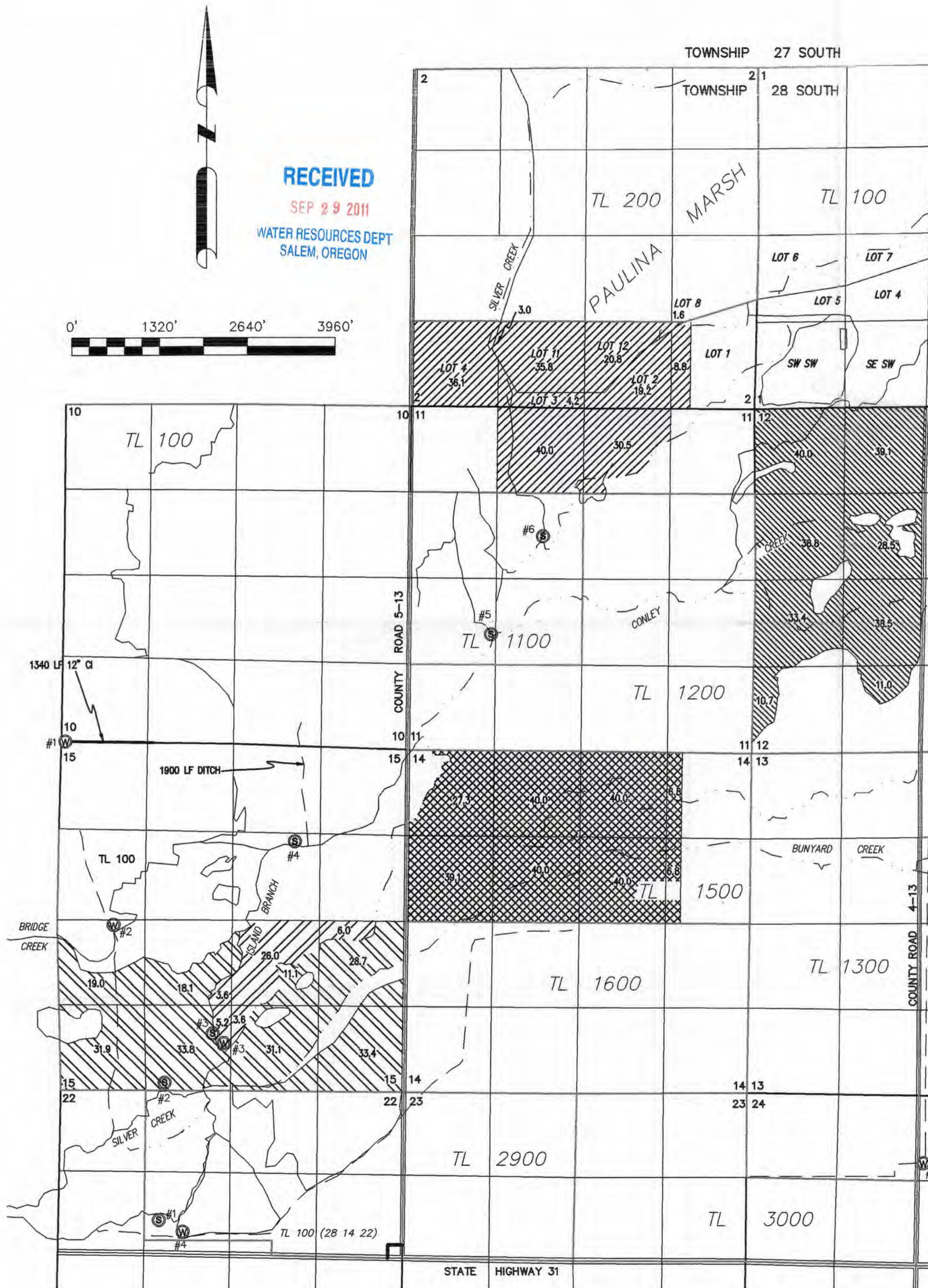
ALL POINTS ENGINEERING & SURVEYING  
P.O. BOX 767 (CRR) TERREBONNE, OREGON 97160  
PHONE (541) 542-5222 www.APEandS.com

0097-8-5

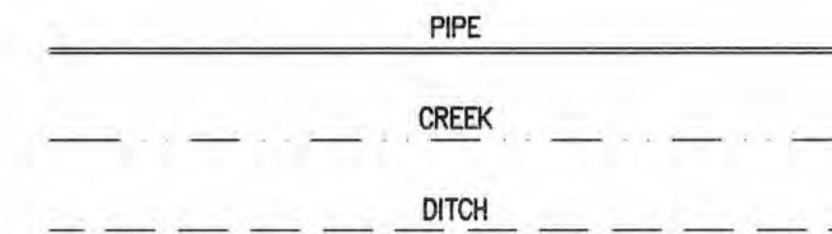


S-87600

TOWNSHIP 28 SOUTH, RANGE 14 EAST, W.M.  
LAKE COUNTY, OREGON



RECEIVED  
SEP 29 2011  
WATER RESOURCES DEPT  
SALEM, OREGON



- 200 ACRES PRIMARY IRRIGATION FROM ITEM #3 (HOUGH) OF SILVER CREEK DECREE OVERLAPS PRIMARY IRRIGATION FROM CERTIFICATE 2060 AND SUPPLEMENTAL IRRIGATION FROM PERMIT G10039
- 240 ACRES PRIMARY IRRIGATION FROM ITEM #4 (PORTER) OF SILVER CREEK DECREE OVERLAPS SUPPLEMENTAL IRRIGATION FROM PERMIT G 10039
- 240 ACRES PRIMARY IRRIGATION FROM ITEM #6 (CONLEY) OF SILVER CREEK DECREE OVERLAPS SUPPLEMENTAL IRRIGATION FROM PERMIT G 10039
- 44.4 ACRES PRIMARY IRRIGATION FROM "THE ISLAND" ITEM #7 (SMALL) OF SILVER CREEK DECREE OVERLAPS SUPPLEMENTAL IRRIGATION FROM PERMIT G 10039
- 207.1 ACRES PRIMARY IRRIGATION FROM ISLAND BRANCH ITEM #7 (SMALL) OF SILVER CREEK DECREE OVERLAPS SUPPLEMENTAL IRRIGATION FROM PERMIT G 10039

- POINT OF DIVERSION (GATE/PIPE)
- POINT OF APPROPRIATION (WELL)

- POD#1 LOCATED IN THE SE 1/4 NW 1/4 SECTION 22 AND 1970 FEET SOUTH AND 1480 FEET EAST FROM THE NW CORNER THEREOF.
- POD#2 LOCATED IN THE SE 1/4 SW 1/4 SECTION 15 AND 100 FEET NORTH AND 1560 FEET EAST FROM THE SW CORNER THEREOF.
- POD#3 LOCATED IN THE SE 1/4 SW 1/4 SECTION 15 AND 850 FEET NORTH AND 2290 FEET EAST FROM THE SW CORNER THEREOF.
- POD#4 LOCATED IN THE SW 1/4 NE 1/4 SECTION 15 AND 1380 FEET SOUTH AND 1700 FEET WEST FROM THE NE CORNER THEREOF.
- POD#5 LOCATED IN THE NW 1/4 SW 1/4 SECTION 11 AND 1750 FEET NORTH AND 1250 FEET EAST FROM THE SW CORNER THEREOF.
- POD#6 LOCATED IN THE SE 1/4 NW 1/4 SECTION 11 AND 3230 FEET NORTH AND 20300 FEET EAST FROM THE SW CORNER THEREOF.

NARRATIVE:

THE PURPOSE OF THIS MAP IS TO SHOW THE LANDS IRRIGATED UNDER ITEMS #3, #4, #6, AND #7 OF THE SILVER CREEK DECREE BY THE OREGON SUPREME COURT IN 1909 AND RECORDED IN VOLUME 7, PAGES 523 TO 536. THIS MAP HAS NO INTENT TO PROVIDE LEGAL DIMENSIONS OR THE LOCATION OF PROPERTY LINES. THE TOPOGRAPHY SHOWN HEREON WAS DIGITIZED FROM 2006 NRCS AERIAL IMAGERY AND USGS QUAD PANELS (SILVER LAKE 1967 AND TUFF BUTTE 1974). GOVERNMENT LAND OFFICE PLATS WERE USED TO IDENTIFY AREAS OF SECTIONS AND SUBDIVISIONS THEREOF. LOCATIONS OF POINTS OF DIVERSION WERE TIED BY GARMIN-RINOS20HCX HAND HELD GPS ACCURATE TO ±15 FEET.

WATER RIGHTS EXHIBIT

DRAWN: sdm	DATE 9/19/2011	BELL A LAND & CATTLE P.O. BOX 97 LA PINE, OR 97739 EXHIBIT2.DWG
APPROVED:	DATE	
SCALE: 4" = 1 MILE	SHEET 1 of 1	PROJECT NO. 09066

ALL POINTS ENGINEERING & SURVEYING  
P.O. BOX 767 (CRR) TERREBONE, OREGON 97160  
PHONE (541) 548-5833 www.APEandS.com