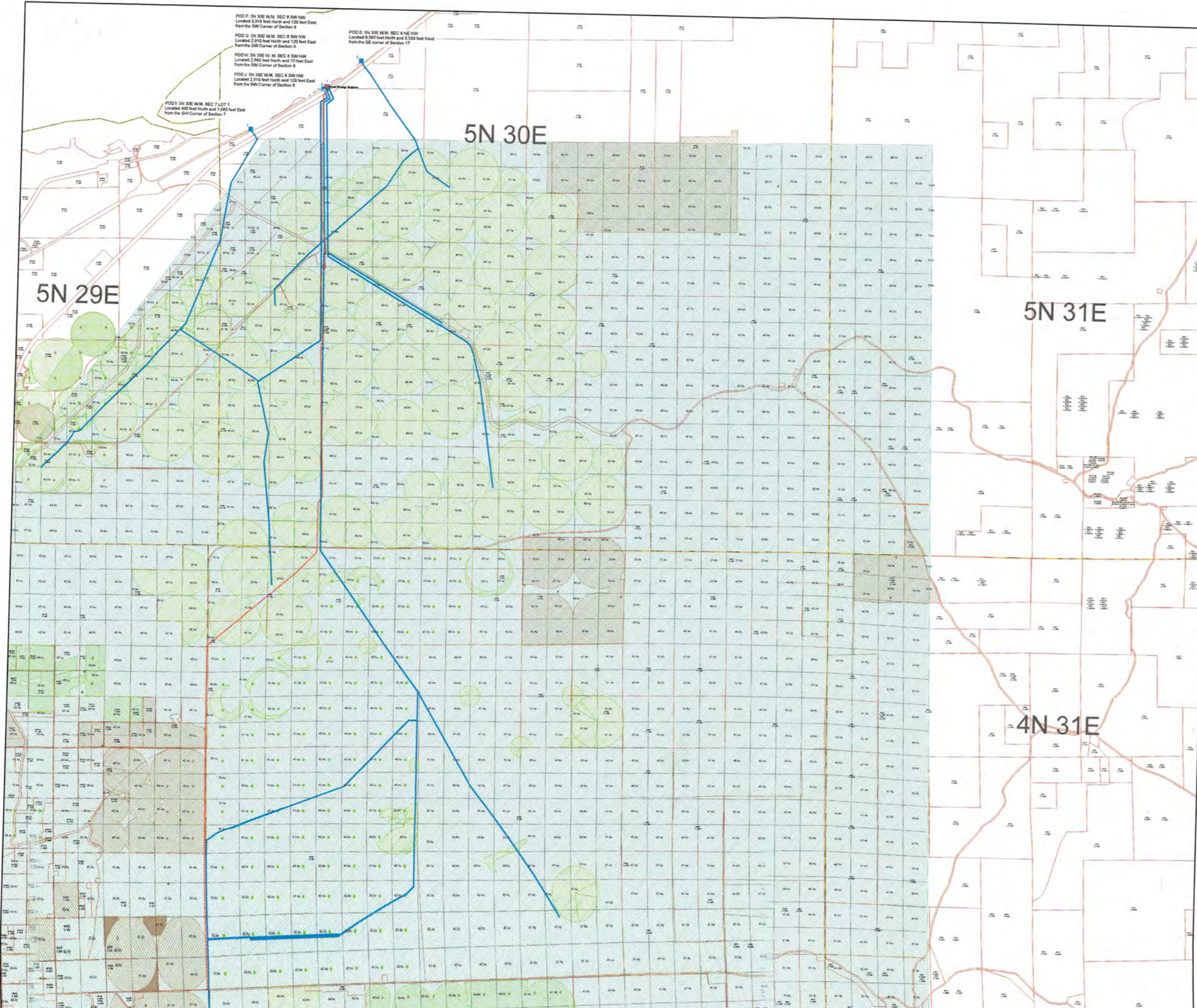
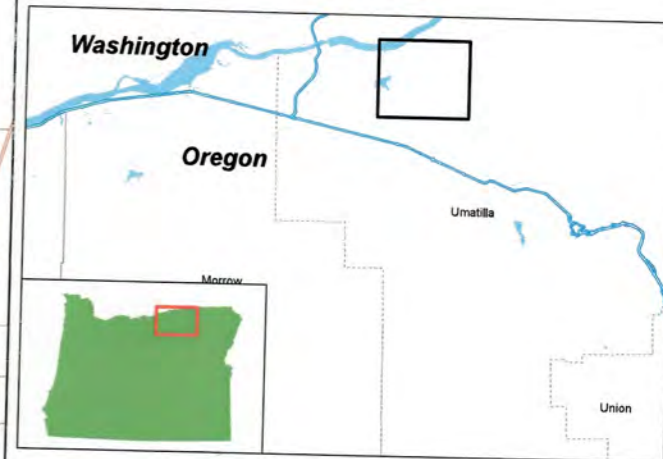


East Permit Place of Use
Map Frame A

NOWA



POD F: 5N 30E W.M. SEC 8 SW NW
Located 2,310 feet North and 120 feet East
from the SW Corner of Section 8

POD G: 5N 30E W.M. SEC 8 SW NW
Located 2,310 feet North and 120 feet East
from the SW Corner of Section 8

POD H: 5N 30E W.M. SEC 8 SW NW
Located 2,310 feet North and 120 feet East
from the SW Corner of Section 8

POD I: 5N 30E W.M. SEC 8 SW NW
Located 2,310 feet North and 120 feet East
from the SW Corner of Section 8

POD J: 5N 30E W.M. SEC 8 SW NW
Located 2,310 feet North and 120 feet East
from the SW Corner of Section 8

POD K: 5N 30E W.M. SEC 8 SW NW
Located 2,310 feet North and 120 feet East
from the SW Corner of Section 8

POD L: 5N 30E W.M. SEC 8 SW NW
Located 2,310 feet North and 120 feet East
from the SW Corner of Section 8

POD M: 5N 30E W.M. SEC 8 SW NW
Located 2,310 feet North and 120 feet East
from the SW Corner of Section 8

POD N: 5N 30E W.M. SEC 8 SW NW
Located 2,310 feet North and 120 feet East
from the SW Corner of Section 8

POD O: 5N 30E W.M. SEC 8 SW NW
Located 2,310 feet North and 120 feet East
from the SW Corner of Section 8

POD P: 5N 30E W.M. SEC 8 SW NW
Located 2,310 feet North and 120 feet East
from the SW Corner of Section 8

POD Q: 5N 30E W.M. SEC 8 SW NW
Located 2,310 feet North and 120 feet East
from the SW Corner of Section 8

POD R: 5N 30E W.M. SEC 8 SW NW
Located 2,310 feet North and 120 feet East
from the SW Corner of Section 8

POD S: 5N 30E W.M. SEC 8 SW NW
Located 2,310 feet North and 120 feet East
from the SW Corner of Section 8

POD T: 5N 30E W.M. SEC 8 SW NW
Located 2,310 feet North and 120 feet East
from the SW Corner of Section 8

POD U: 5N 30E W.M. SEC 8 SW NW
Located 2,310 feet North and 120 feet East
from the SW Corner of Section 8

POD V: 5N 30E W.M. SEC 8 SW NW
Located 2,310 feet North and 120 feet East
from the SW Corner of Section 8

POD W: 5N 30E W.M. SEC 8 SW NW
Located 2,310 feet North and 120 feet East
from the SW Corner of Section 8

POD X: 5N 30E W.M. SEC 8 SW NW
Located 2,310 feet North and 120 feet East
from the SW Corner of Section 8

POD Y: 5N 30E W.M. SEC 8 SW NW
Located 2,310 feet North and 120 feet East
from the SW Corner of Section 8

POD Z: 5N 30E W.M. SEC 8 SW NW
Located 2,310 feet North and 120 feet East
from the SW Corner of Section 8

- Legend**
- Proposed Pump Station
 - Proposed Pipeline Route
 - Proposed Place of Use - East
 - Existing Pump Stations
 - Existing Delivery Systems
 - Surface water
 - Groundwater
 - Storage
 - Surface water, primary
 - Surface water, supplemental
 - Groundwater, primary
 - Groundwater, supplemental
 - Storage, primary
 - Storage, supplemental
 - Surface Water
 - Groundwater
 - Storage

RECEIVED

APR 08 2016

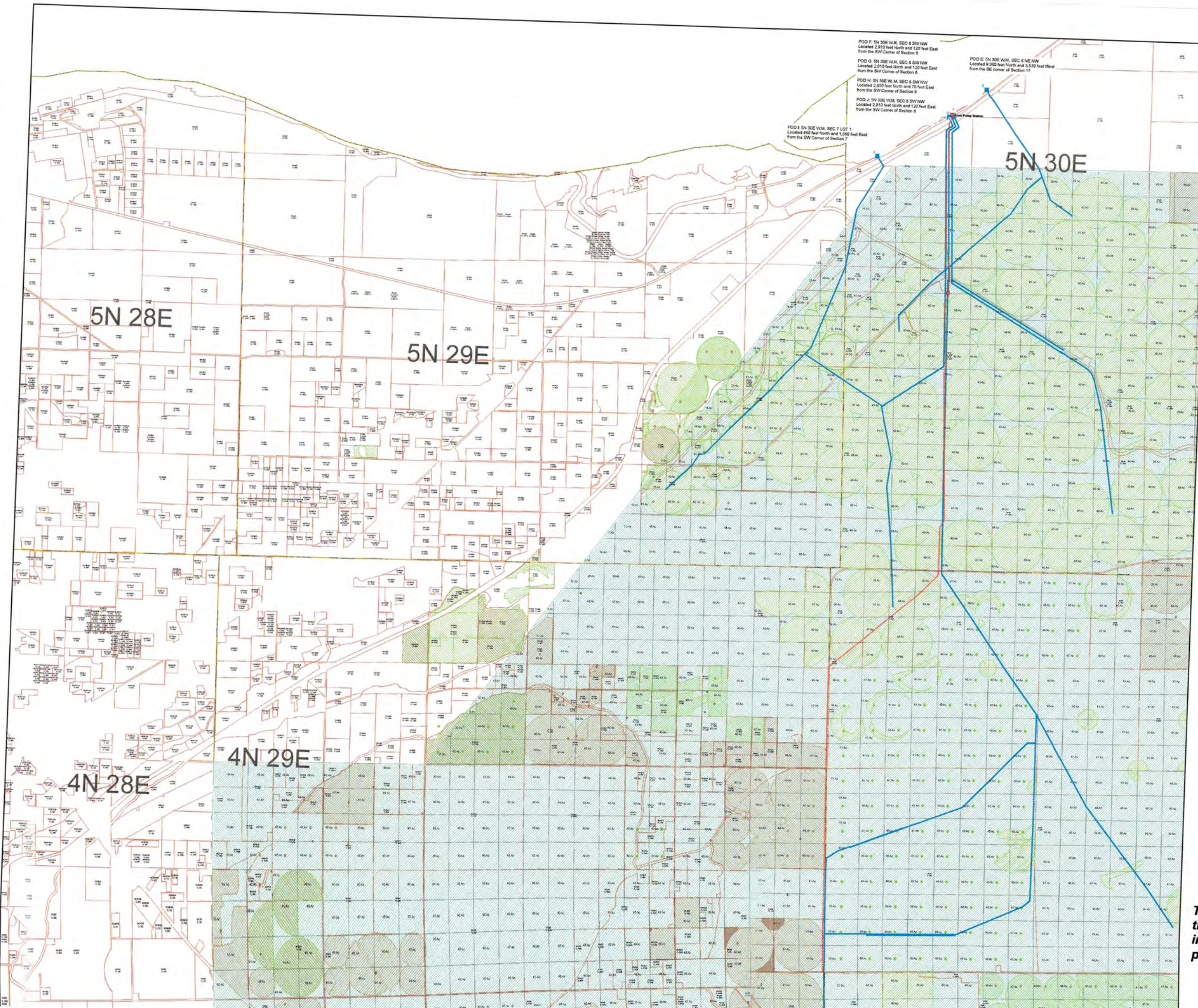
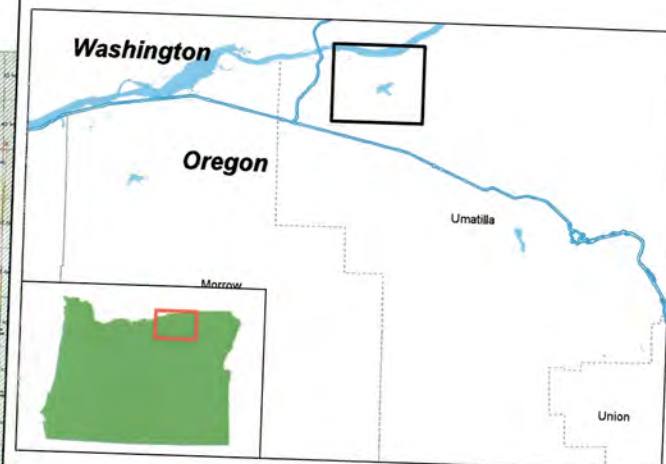
WATER RESOURCES DEPT
SALEM, OREGON

1 inch = 0.25 miles

This map was prepared for the purpose of identifying the location of a water right only and it is not intended to provide legal dimension or locations of property ownership lines.

**East Permit Place of Use
Map Frame B**

NOWA



POD F: 5N 30E W.M. SEC 8 SW NW
Located 2,310 feet North and 120 feet East
from the SW Corner of Section 8

POD G: 5N 30E W.M. SEC 8 SW NW
Located 2,310 feet North and 120 feet East
from the SW Corner of Section 8

POD H: 5N 30E W.M. SEC 8 SW NW
Located 2,850 feet North and 70 feet East
from the SW Corner of Section 8

POD J: 5N 30E W.M. SEC 8 SW NW
Located 2,310 feet North and 120 feet East
from the SW Corner of Section 8

POD K: 5N 30E W.M. SEC 7 LOT 1
Located 400 feet North and 1,080 feet East
from the SW Corner of Section 7

POD L: 5N 30E W.M. SEC 8 NE NW
Located 8,300 feet North and 3,530 feet West
from the SE corner of Section 17

Legend

- Proposed Pump Station
- Proposed Pipeline Route
- Proposed Place of Use - East
- Existing Pump Stations
- Existing Delivery Systems
- Surface water
- Groundwater
- Storage
- Surface water, primary
- Surface water, supplemental
- Groundwater, primary
- Groundwater, supplemental
- Storage, primary
- Storage, supplemental
- Surface Water
- Groundwater
- Storage

RECEIVED

APR 08 2016

WATER RESOURCES
SALEM, OREGON

1 inch = 0.25 miles

This map was prepared for the purpose of identifying the location of a water right only and it is not intended to provide legal dimension or locations of property ownership lines.

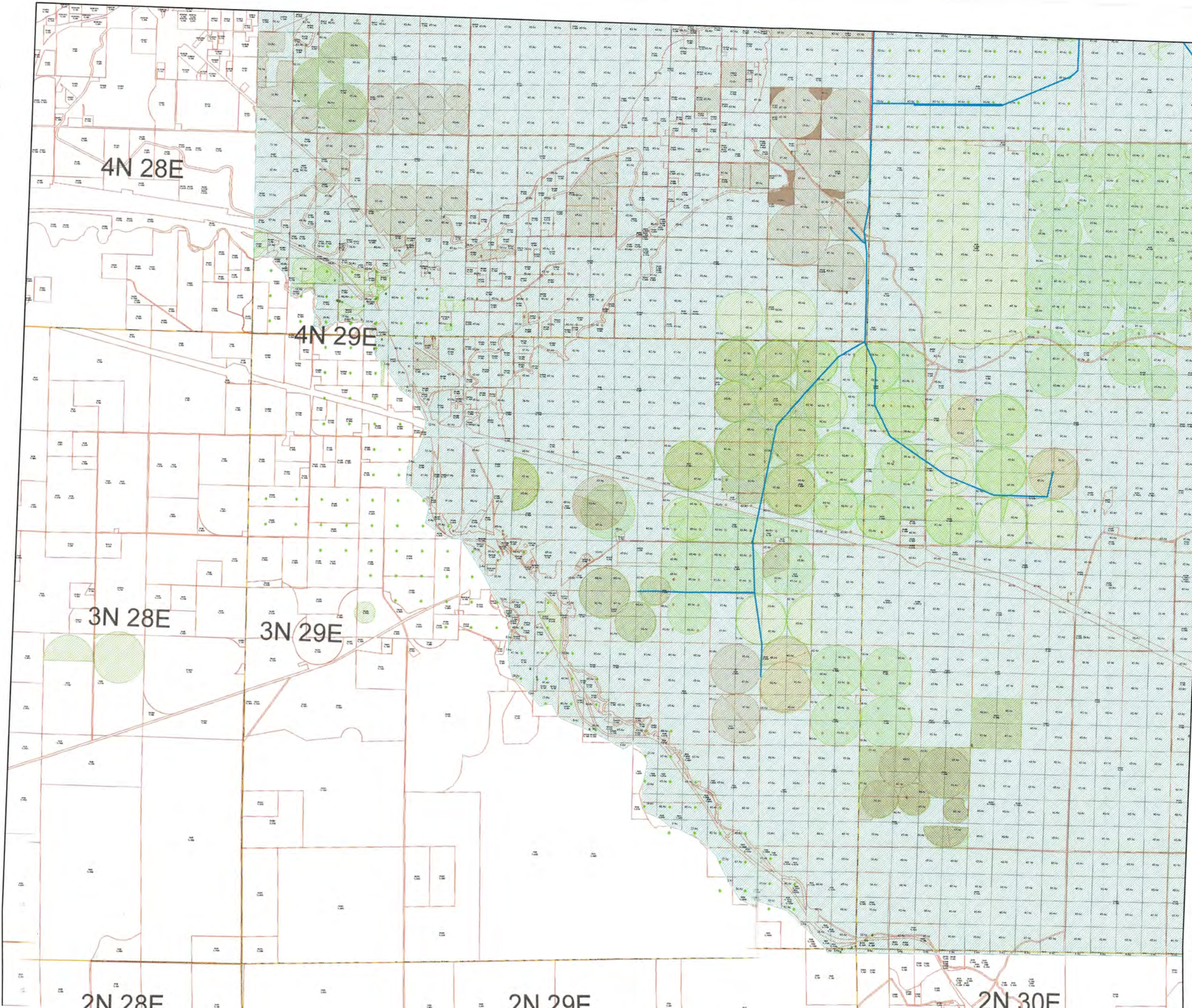
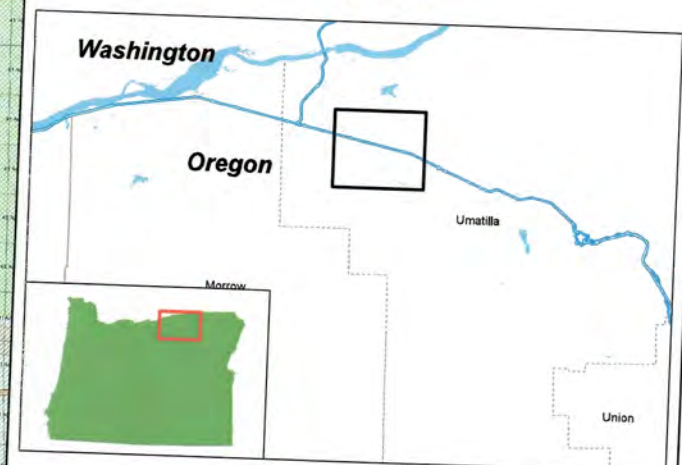


Projection: OR State Plane North
Datum: NAD 1983



East Permit Place of Use
Map Frame C

NOWA



- Legend**
- Proposed Pump Station
 - Proposed Pipeline Route
 - ▨ Proposed Place of Use - East
 - Existing Pump Stations
 - Existing Delivery Systems
 - Surface water
 - Groundwater
 - Storage
 - Surface water, primary
 - Surface water, supplemental
 - Groundwater, primary
 - Groundwater, supplemental
 - Storage, primary
 - Storage, supplemental
 - Surface Water
 - Groundwater
 - Storage

RECEIVED

APR 08 2016

WATER RESOURCES DEPT
SALEM, OREGON

1 inch = 0.25 miles

This map was prepared for the purpose of identifying the location of a water right only and it is not intended to provide legal dimension or locations of property ownership lines.

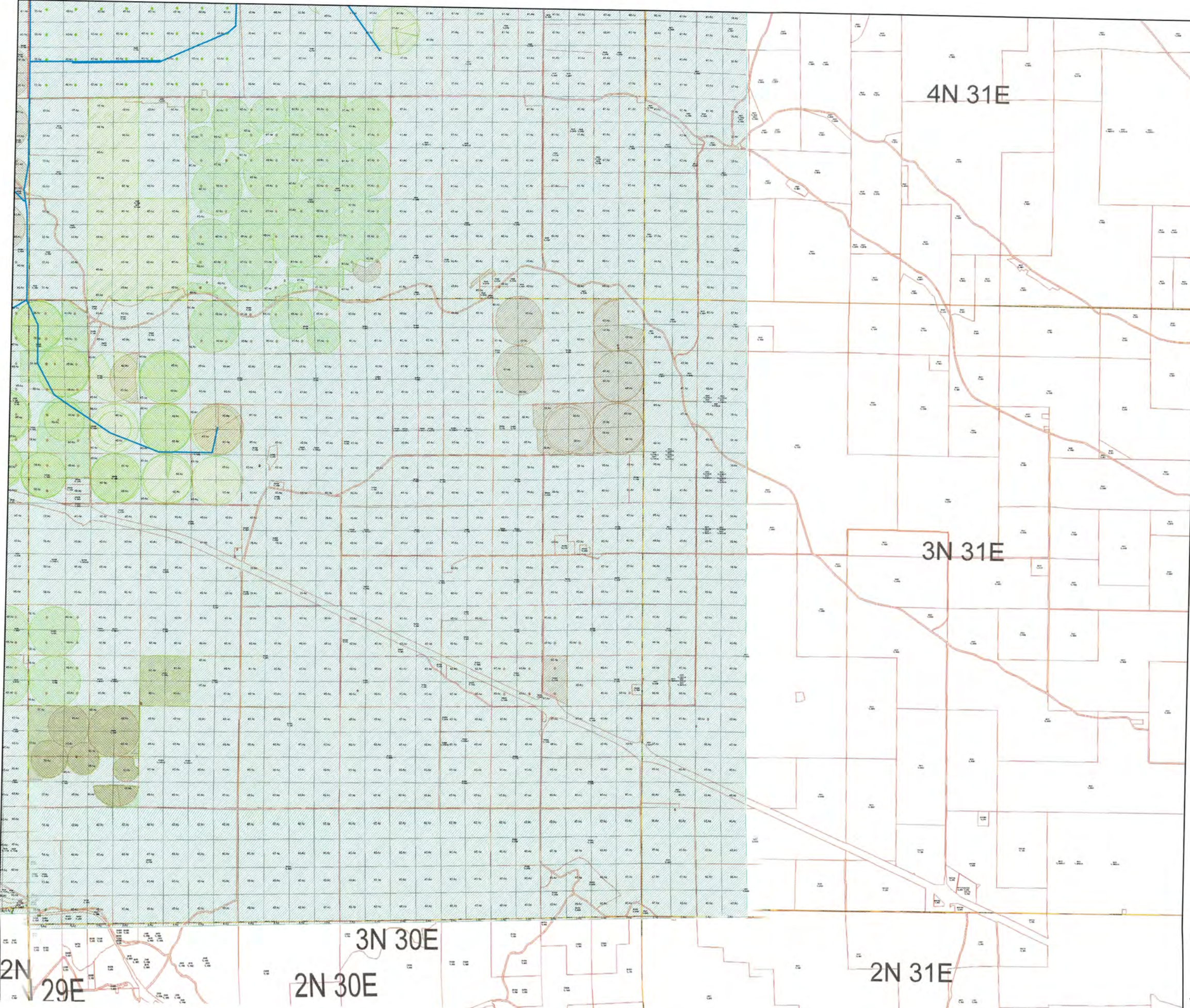
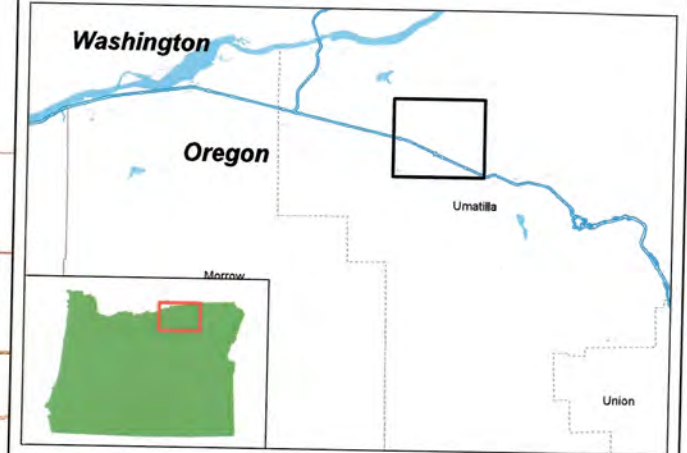


Projection: OR State Plane North
Datum: NAD 1983



**East Permit Place of Use
Map Frame D**

NOWA



Legend

- Proposed Pump Station
- Proposed Pipeline Route
- ▨ Proposed Place of Use - East
- Existing Pump Stations
- Existing Delivery Systems
- Surface water
- Groundwater
- Storage
- Surface water, primary
- Surface water, supplemental
- Groundwater, primary
- Groundwater, supplemental
- Storage, primary
- Storage, supplemental
- Surface Water
- Groundwater
- Storage

RECEIVED

APR 08 2016

WATER RESOURCES DEPT
SALEM, OREGON

1 inch = 0.25 miles

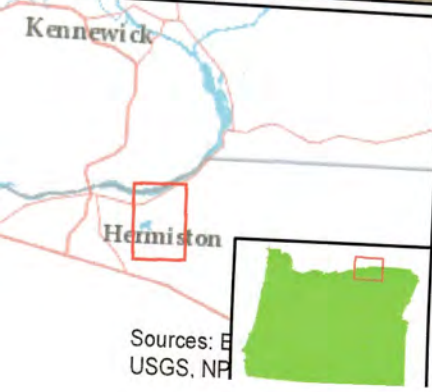
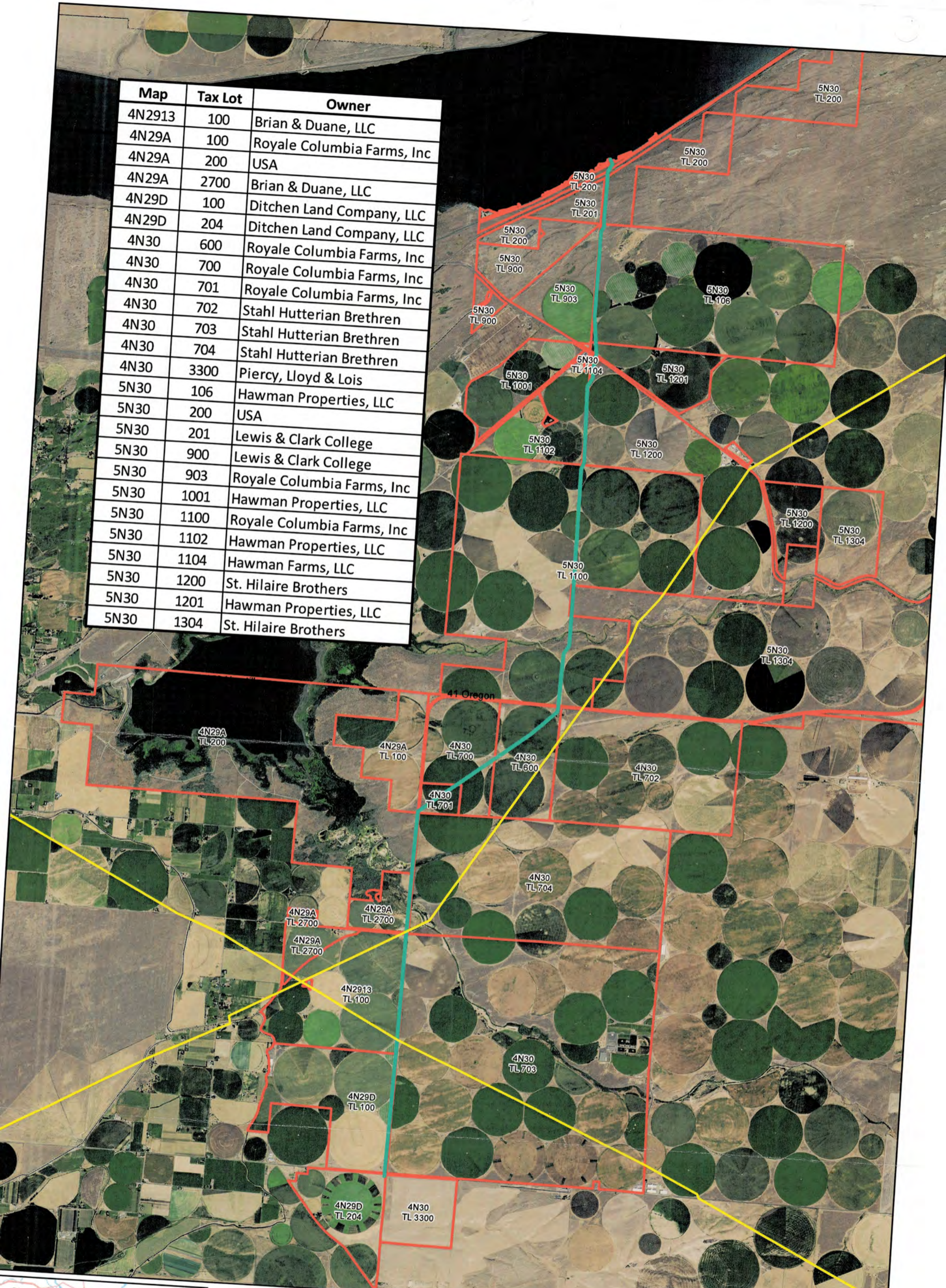
This map was prepared for the purpose of identifying the location of a water right only and it is not intended to provide legal dimension or locations of property ownership lines.



Projection: OR State Plane North
Datum: NAD 1983
Date: 4/1/2016



Map	Tax Lot	Owner
4N2913	100	Brian & Duane, LLC
4N29A	100	Royale Columbia Farms, Inc
4N29A	200	USA
4N29A	2700	Brian & Duane, LLC
4N29D	100	Ditchen Land Company, LLC
4N29D	204	Ditchen Land Company, LLC
4N30	600	Royale Columbia Farms, Inc
4N30	700	Royale Columbia Farms, Inc
4N30	701	Royale Columbia Farms, Inc
4N30	702	Stahl Hutterian Brethren
4N30	703	Stahl Hutterian Brethren
4N30	704	Stahl Hutterian Brethren
4N30	3300	Piercy, Lloyd & Lois
5N30	106	Hawman Properties, LLC
5N30	200	USA
5N30	201	Lewis & Clark College
5N30	900	Lewis & Clark College
5N30	903	Royale Columbia Farms, Inc
5N30	1001	Hawman Properties, LLC
5N30	1100	Royale Columbia Farms, Inc
5N30	1102	Hawman Properties, LLC
5N30	1104	Hawman Farms, LLC
5N30	1200	St. Hilaire Brothers
5N30	1201	Hawman Properties, LLC
5N30	1304	St. Hilaire Brothers



Legend

- Gas Pipelines
- Proposed Pipeline
- Tax Lots

RECEIVED

APR 08 201

EAST IMPROVEMENT DISTRICT
EAST PROJECT PROPOSED ROUTE MAP

WATER RESOURCES DEPT
SALEM, OREGON

