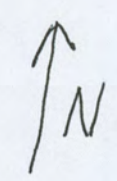
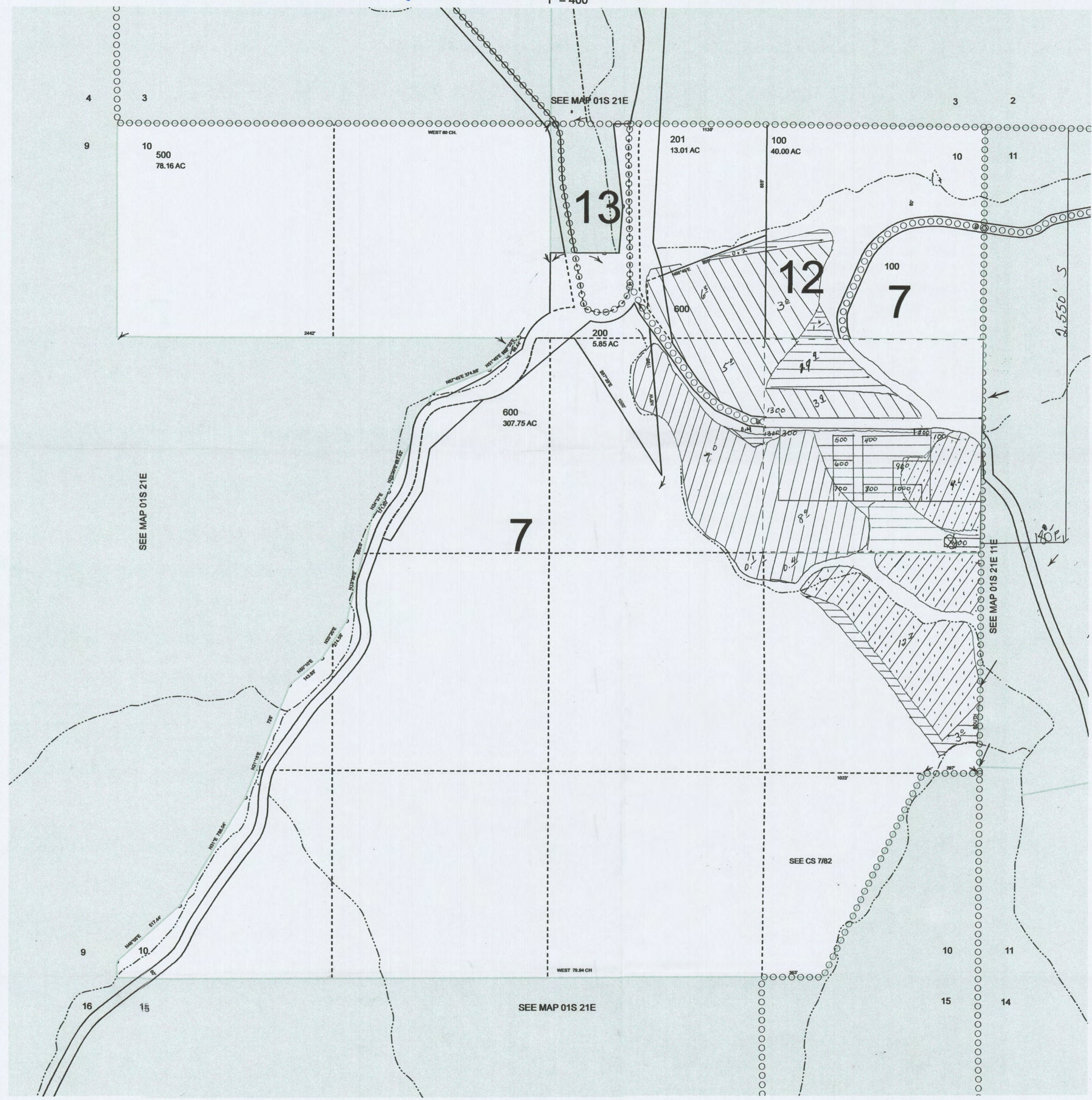



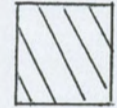
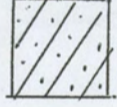
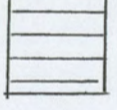
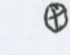
THIS MAP WAS PREPARED FOR ASSESSMENT PURPOSE ONLY

SECTION 10 T.1S. R.21E. W.M. GILLIAM COUNTY 1" = 400'

01S21E10

LCATDWC - 2013-06-24 11:25



- CANCELLED
300
400
501
-  Cert. 25756
Suppl' well
-  Cert. 42183
Cert. 54169
Suppl' well
-  Cert. 56645
Suppl' well
-  primary well
-  WELL
8550'S & 180'E at
NE Corner Section 10

RECEIVED BY OWRD
MAR 25 2016
SALEM, OR

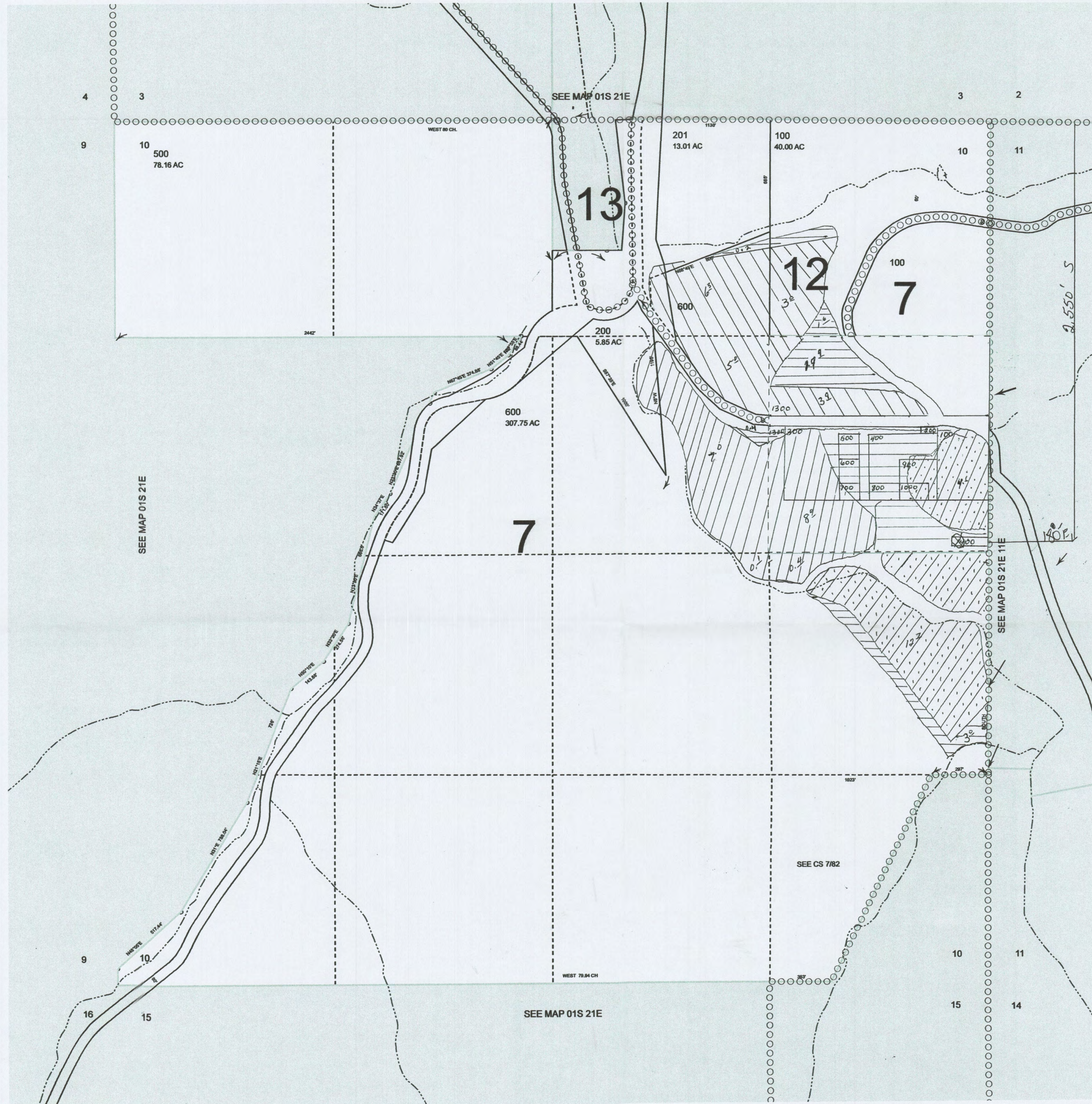
01S21E10



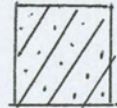
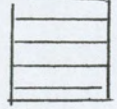
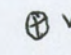
THIS MAP WAS PREPARED FOR
ASSESSMENT PURPOSE ONLY

SECTION 10 T.1S. R.21E. W.M.
GILLIAM COUNTY
1" = 400'

01S21E10

LCATDWC - 2013-06-24 11:25



- CANCELLED
300
400
501
-  Cert. 25756
Suppl' well
-  Cert. 42183
Cert. 54169
Suppl' well
-  Cert. 56645
Suppl' well
-  primary
well
-  WELL
8550'S & 180'E of
NE Corner Section 10

Gr-18281

RECEIVED BY OWRD
MAR 25 2016
SALEM, OR

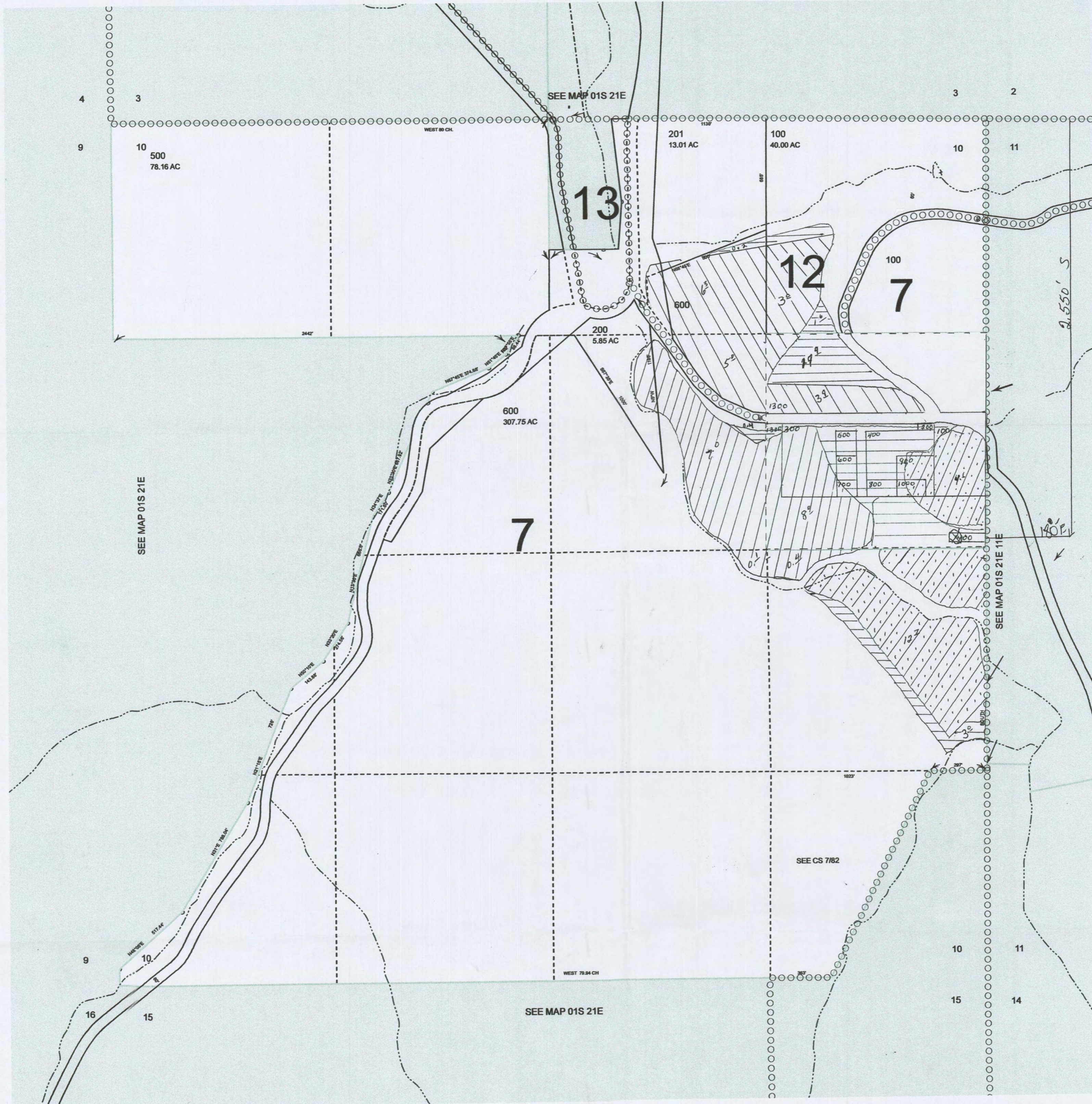
01S21E10

THIS MAP WAS PREPARED FOR ASSESSMENT PURPOSE ONLY

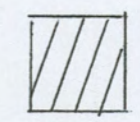
SECTION 10 T.1S. R.21E. W.M.
GILLIAM COUNTY
1" = 400'

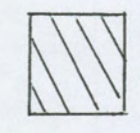
01S21E10

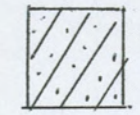
LCATDWC - 2013-06-24 11:25

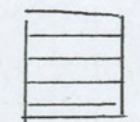


CANCELLED
300
400
501

 Cert. 25756
Suppl well

 Cert. 42183
Cert. 54169
Suppl well

 Cert. 56645
Suppl well

 Primary well

⊗ WELL
2550'S & 180'E of
NE Corner Section 10

G-1004

RECEIVED BY OWRD

MAR 25 2016

SALEM, OR

01S21E10