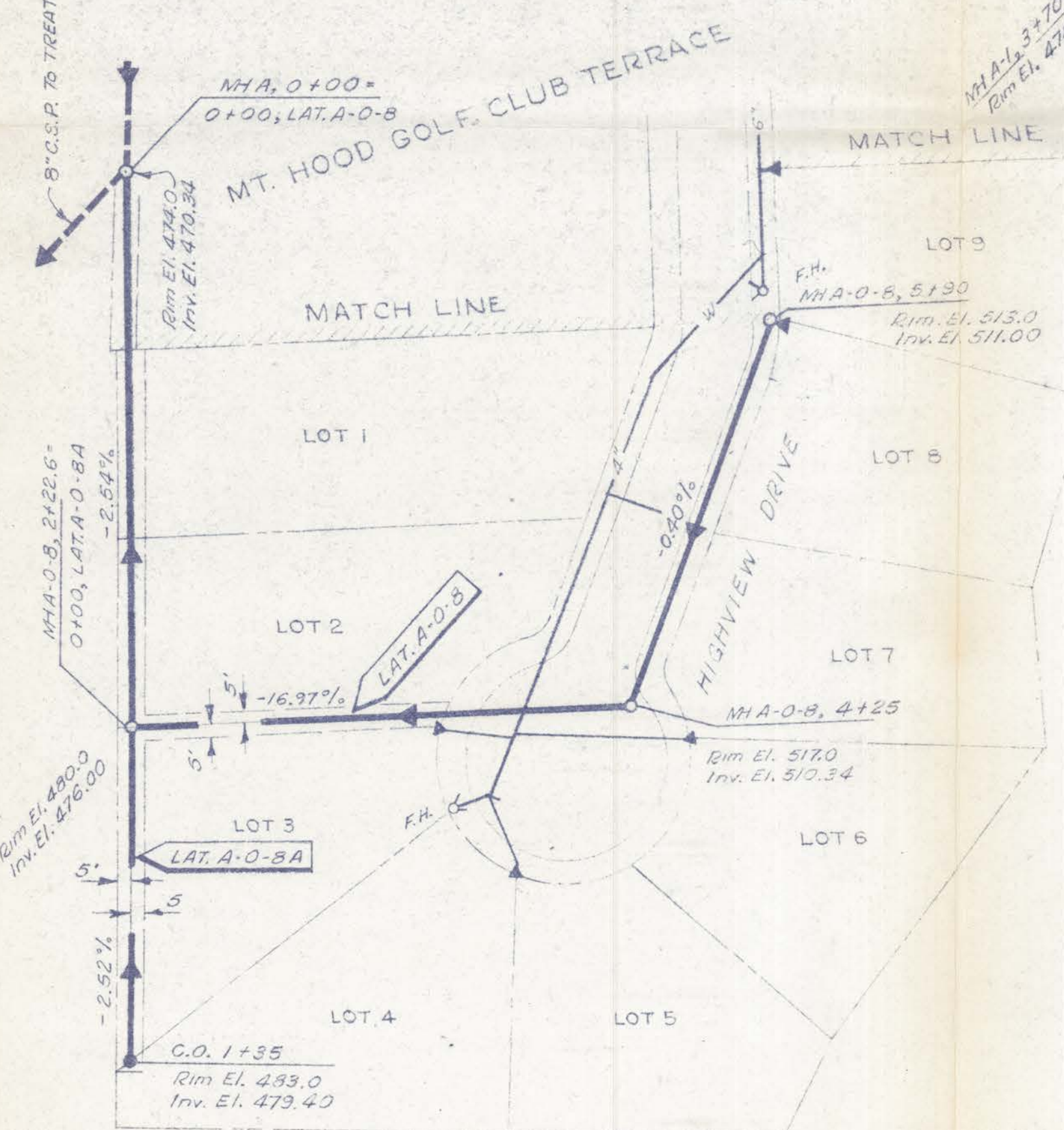
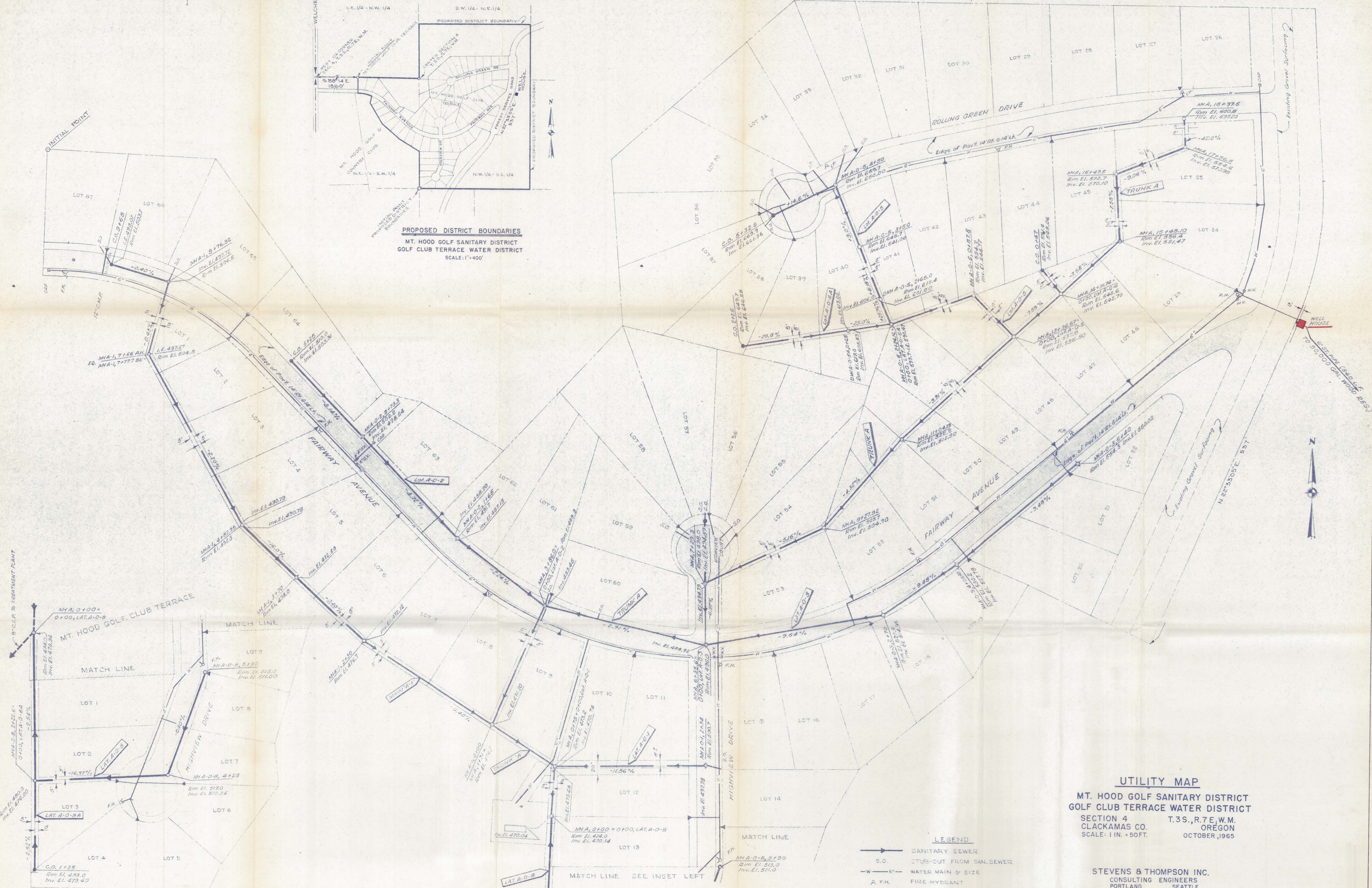


**PROPOSED DISTRICT BOUNDARIES**  
MT. HOOD GOLF SANITARY DISTRICT  
GOLF CLUB TERRACE WATER DISTRICT  
SCALE: 1"=400'



**INSET**  
MT. HOOD GOLF CLUB TERRACE NO. 2

- LEGEND**
- S.O. — SANITARY SEWER
  - S.O. — STUB-OUT FROM SAN. SEWER
  - W.M. — WATER MAIN & SIZE
  - F.H. — FIRE HYDRANT
  - W.V. — WATER VALVE
  - H.S.W. — HOUSE SERVICE - WATER

NOTE: EXISTING SANITARY SEWER STUBOUTS ARE INDICATED ON THIS MAP.

**UTILITY MAP**  
MT. HOOD GOLF SANITARY DISTRICT  
GOLF CLUB TERRACE WATER DISTRICT  
SECTION 4 T.3S., R.7E, W.M.  
CLACKAMAS CO. OREGON  
SCALE: 1 IN. = 50 FT. OCTOBER, 1965

STEVENS & THOMPSON INC.  
CONSULTING ENGINEERS  
PORTLAND SEATTLE

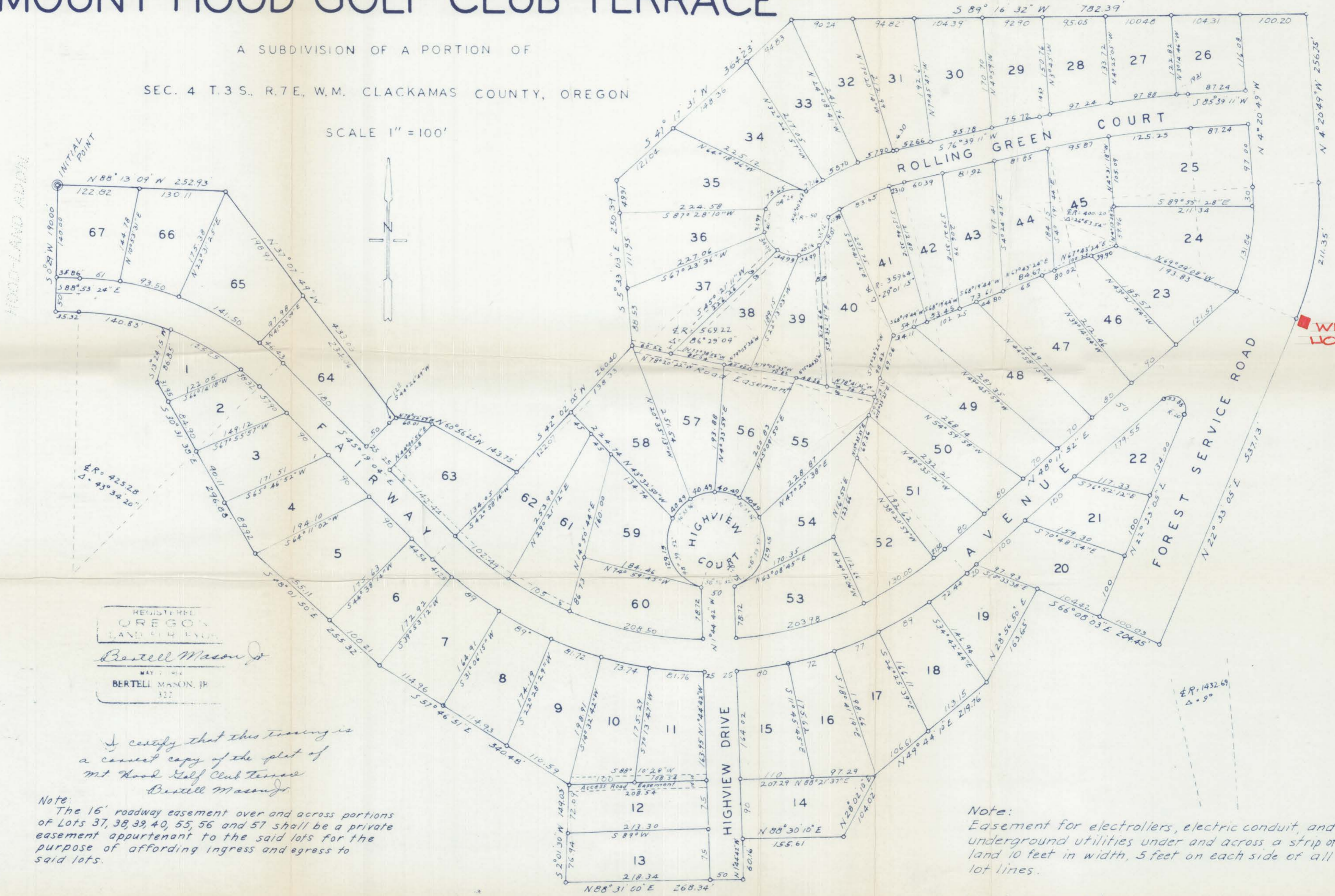


Application No. G-3959  
Permit No.  
RECEIVED JUN 9 1967  
STATE ENGINEER SALEM, OREGON

# MOUNT HOOD GOLF CLUB TERRACE

A SUBDIVISION OF A PORTION OF  
SEC. 4 T.3 S., R.7 E., W.M. CLACKAMAS COUNTY, OREGON

SCALE 1" = 100'



REGISTERED  
OREGON  
LAND SURVEYOR  
*Bertell Mason, Jr.*  
MAY 7 1964  
BERTELL MASON, JR.  
322

I certify that this tracing is  
a correct copy of the plat of  
Mt Hood Golf Club Terrace  
*Bertell Mason, Jr.*

Note:  
The 16' roadway easement over and across portions  
of Lots 37, 38, 39, 40, 55, 56 and 57 shall be a private  
easement appurtenant to the said lots for the  
purpose of affording ingress and egress to  
said lots.

Note:  
Easement for electroliers, electric conduit, and  
underground utilities under and across a strip of  
land 10 feet in width, 5 feet on each side of all  
lot lines.

o Indicates Iron Rod