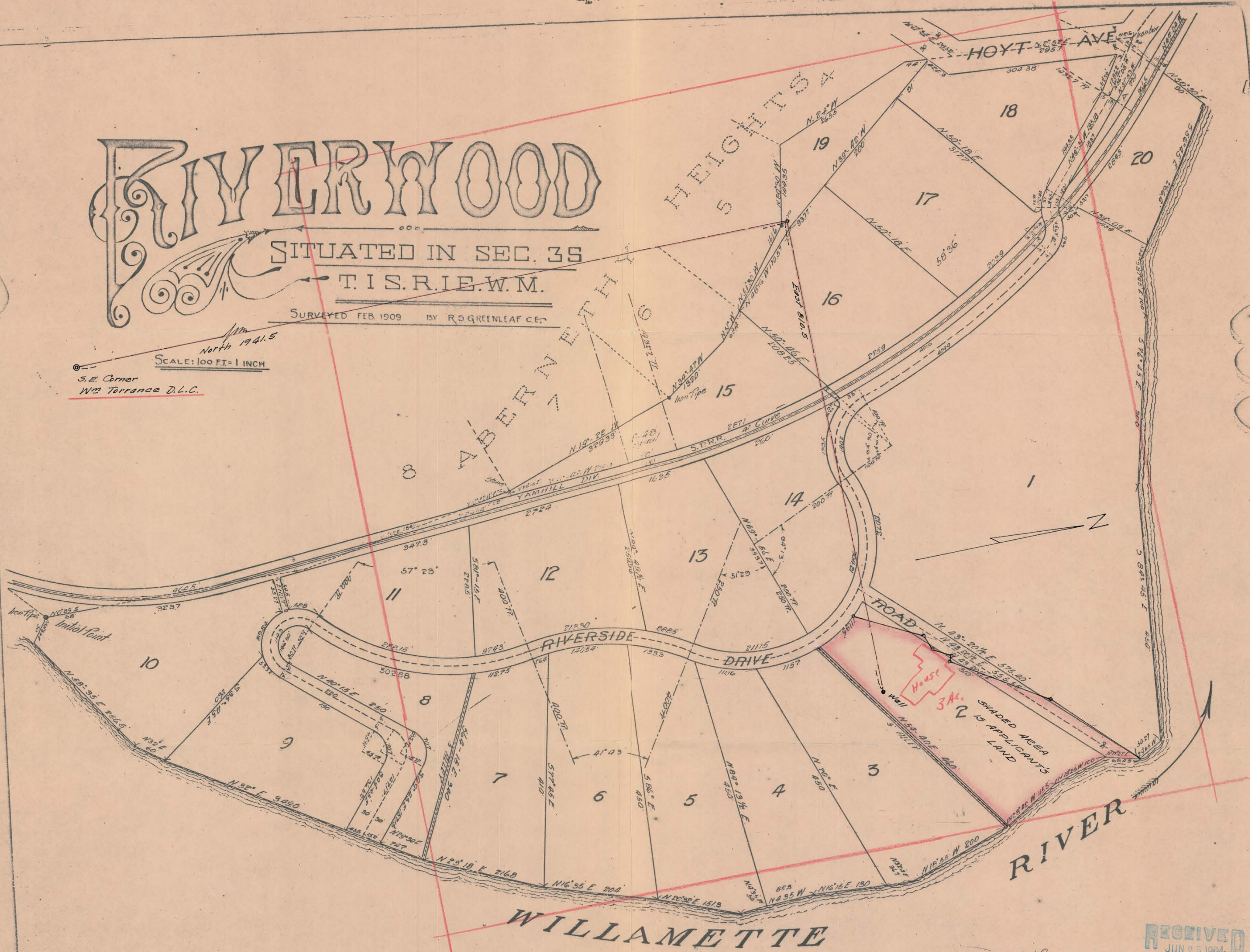


RIVERWOOD

SITUATED IN SEC. 35
T. 1 S. R. 1 E. W. M.

SURVEYED FEB. 1909 BY R. S. GREENLEAF C.E.

North 1941.5
SCALE: 100 FT. = 1 INCH
S.E. Corner
W 1/2 Terrance D.L.C.



WILLAMETTE

Application No. G-2868
Permit No. G-2697

RECEIVED
JUN 25 1964
STATE ENGINEER
SALEM, OREGON