

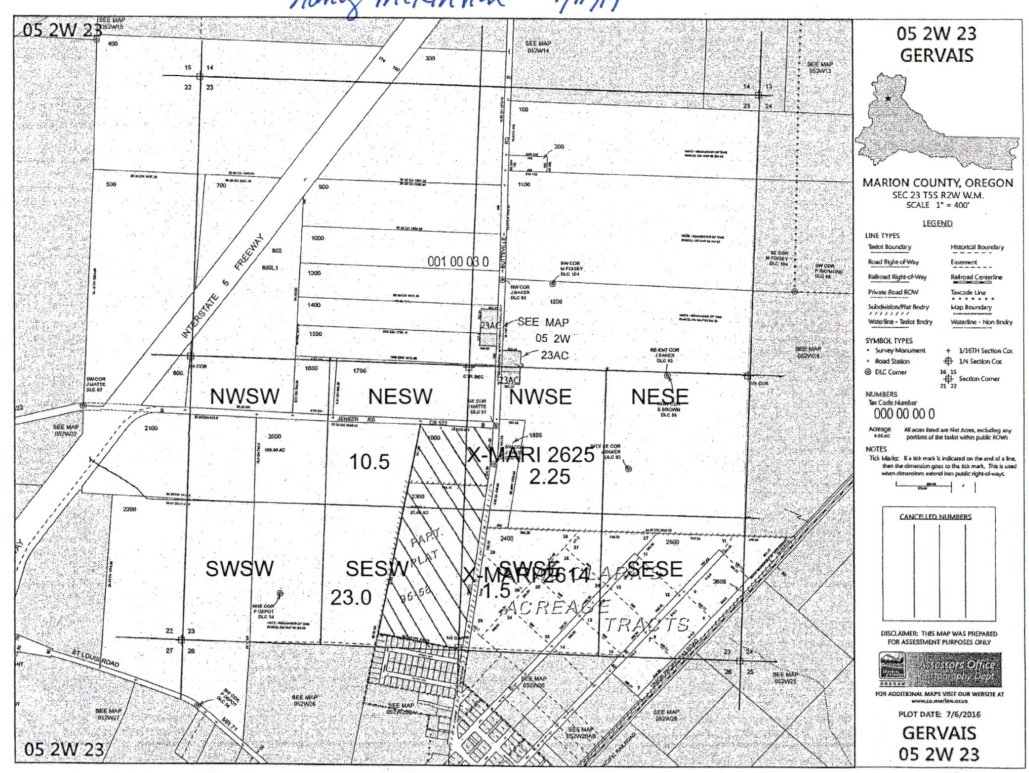




RECEIVED  
JAN 24 2019  
OWRD

MARI 2625 - 1750 Feet North and 15 Feet East From S1/4 Corner, Section 23  
MARI 2614 - 740 Feet North and 54 Feet East From S1/4 Corner, Section 23  
37.25 acres nursery use  
1" = 1320'

*Le  
nancy mckinnon 1/10/19*

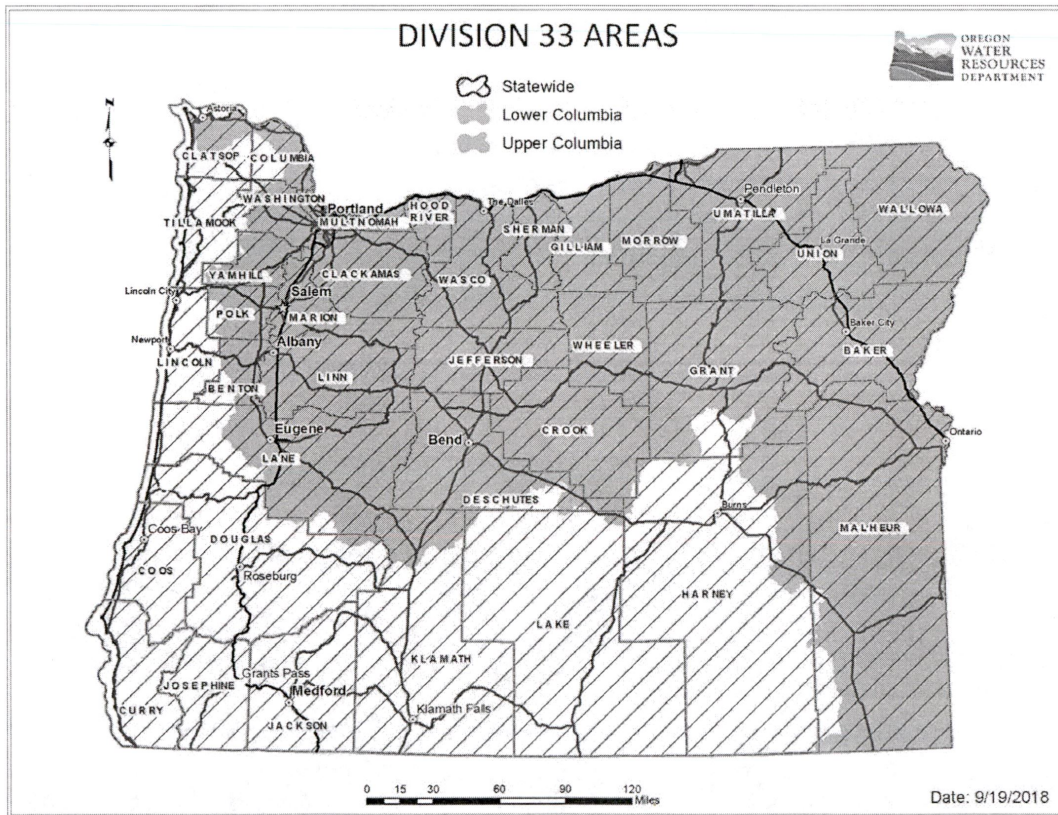


G-15783



Figure 1: Map of Division 33 Areas

RECEIVED  
JAN 24 2019  
OWRD



For more detailed information, click on the following link and enter the TRSQ or the Lat/Long of a POA and click on "Submit" to retrieve a report that will show which section, if any, of the Division 33 rules apply: [https://apps.wrd.state.or.us/apps/misc/lkp\\_trsq\\_features/](https://apps.wrd.state.or.us/apps/misc/lkp_trsq_features/)

9-18783

MARI 2625 - 1750 Feet North and 15 Feet East From S1/4 Corner, Section 23

MARI 2614 - 740 Feet North and 54 Feet East From S1/4 Corner, Section 23

37.25 acres nursery use

1" = 1320'



NORTH

RECEIVED

JAN 24 2019

OWRD

*for*  
*nonny mckinnan 1/11/19*

