

**LEGEND**

- PROPERTY LINE
- SECTION LINE
- - - QUARTER SECTION LINE
- - - QUARTER-QUARTER SECTION LINE

**SECTION NUMBER**  
20

**LAND APPLICATION**

T. 8 S., R. 46 E., W.M. SECTION 20  
 NW 1/4 OF THE NE 1/4 17.91 AC  
 SW 1/4 OF THE NE 1/4 24.43 AC  
 NE 1/4 OF THE NE 1/4 24.63 AC  
 SE 1/4 OF THE NE 1/4 29.41 AC

**CITY OF HALVAY, OREGON**  
 OREGON WATER RESOURCES DEPARTMENT  
 MUNICIPAL RECLAIMED WATER REGISTRATION  
**CENTER PIVOT - RECYCLED WATER USE MAP**



**RECEIVED**  
 FIGURE 1

T. 8 S., R. 46 E., W.M.  
 SCALE: FEET  
 0 1000

**RECEIVED**  
 APR - 9 2018  
 Dept. of Environmental Quality  
 State of Oregon  
 Eastern Region - Portland

To Richland City and Baker City

To Oxbow

**LEGEND**

- PROPERTY LINE
- SECTION LINE
- QUARTER SECTION LINE
- QUARTER-QUARTER SECTION LINE

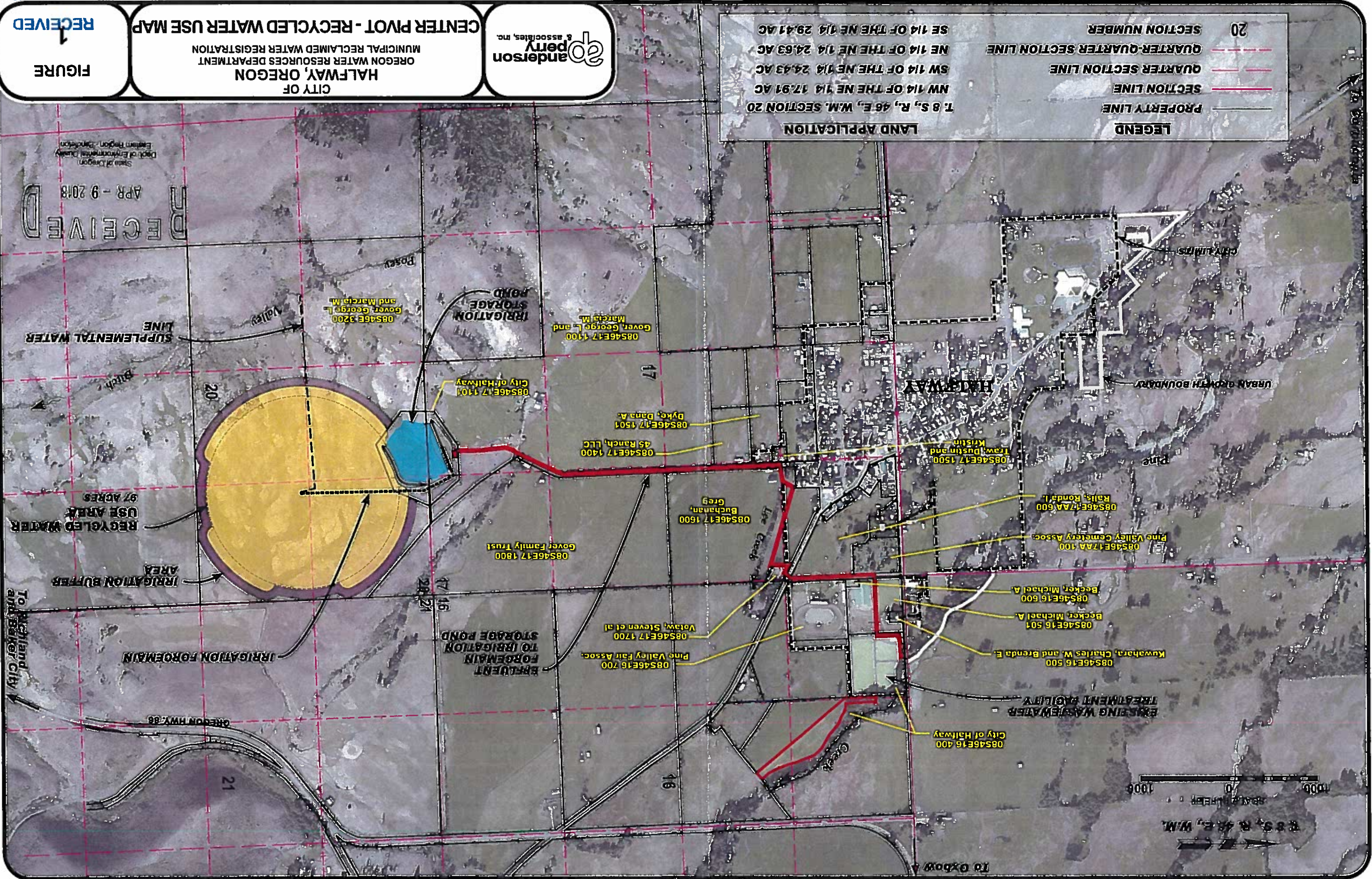
**SECTION NUMBER**  
20

**LAND APPLICATION**  
T. 8 S., R. 48 E., W.M. SECTION 20  
NW 1/4 OF THE NE 1/4 17.91 AC  
SW 1/4 OF THE NE 1/4 24.43 AC  
NE 1/4 OF THE NE 1/4 24.63 AC  
SE 1/4 OF THE NE 1/4 29.41 AC



**CITY OF HALFWAY, OREGON**  
OREGON WATER RESOURCES DEPARTMENT  
MUNICIPAL RECLAIMED WATER REGISTRATION  
**CENTER PIVOT - RECYCLED WATER USE MAP**

**RECEIVED**  
FIGURE 1



**RECEIVED**  
APR - 9 2018  
State of Oregon  
Dept. of Environmental Quality  
Eastern Region - Pendleton

To Richland and Baker City

To Oxbow