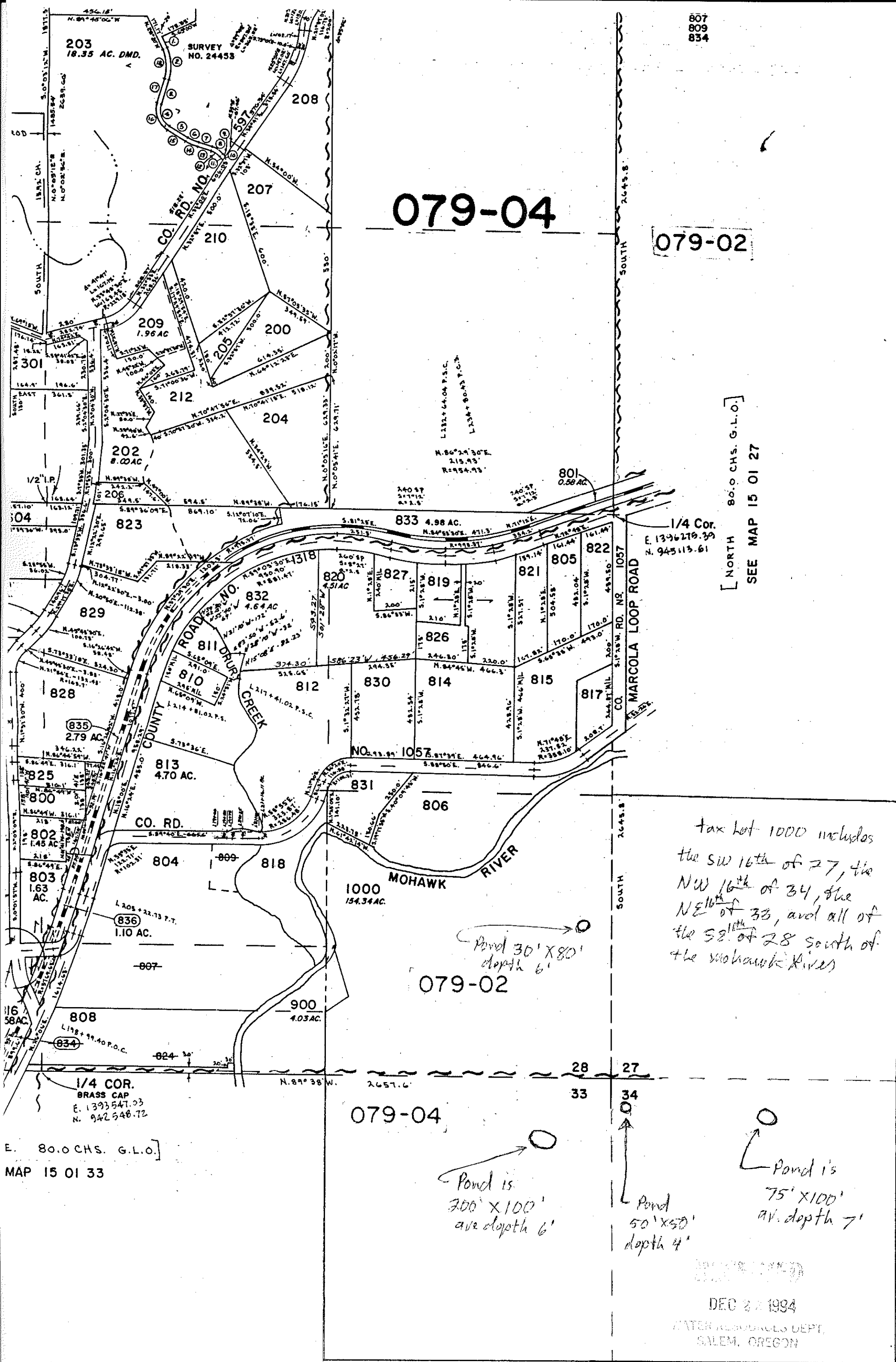


079-04

079-02

[NORTH 80.0 CHS. G.L.O.]
SEE MAP 15 01 27



tax lot 1000 includes
the SW 16th of 27, the
NW 16th of 34, the
NE 16th of 33, and all of
the SE 16th of 28 south of
the Mohawk River

Pond 30' X 80'
depth 6'

079-02

Pond is
200' X 100'
ave depth 6'

Pond
50' X 50'
depth 4'

Pond is
75' X 100'
av. depth 7'

DEC 27 1994

WATER RESOURCES DEPT.
SALEM, OREGON

all ponds constructed in 1977

E. 80.0 CHS. G.L.O.
MAP 15 01 33

1/4 COR.
BRASS CAP
E. 1393547.03
N. 942548.72

203
18.35 AC. DMD.

209
1.96 AC

200

212

204

202
8.00 AC

823

828

825

800

802
1.45 AC

803
1.63 AC

804

809

818

808

807

833
4.98 AC.

829

828

825

800

802
1.45 AC

803
1.63 AC

804

809

818

808

807

833
4.98 AC.

829

828

825

800

802
1.45 AC

803
1.63 AC

804

809

818

808

807

833
4.98 AC.

829

828

825

800

802
1.45 AC

803
1.63 AC

804

809

818

808

807

833
4.98 AC.

829

828

825

800

802
1.45 AC

803
1.63 AC

804

809

818

808

807

833
4.98 AC.

829

828

825

800

802
1.45 AC

803
1.63 AC

804

809

818

808

807

833
4.98 AC.

829

828

825

800

802
1.45 AC

803
1.63 AC

804

809

818

808

807

833
4.98 AC.

829

828

825

800

802
1.45 AC

803
1.63 AC

804

809

818

808

807

833
4.98 AC.

829

828

825

800

802
1.45 AC

803
1.63 AC

804

809

818

808

807

833
4.98 AC.

829

828

825

800

802
1.45 AC

803
1.63 AC

804

809

818

808

807

807
809
834