

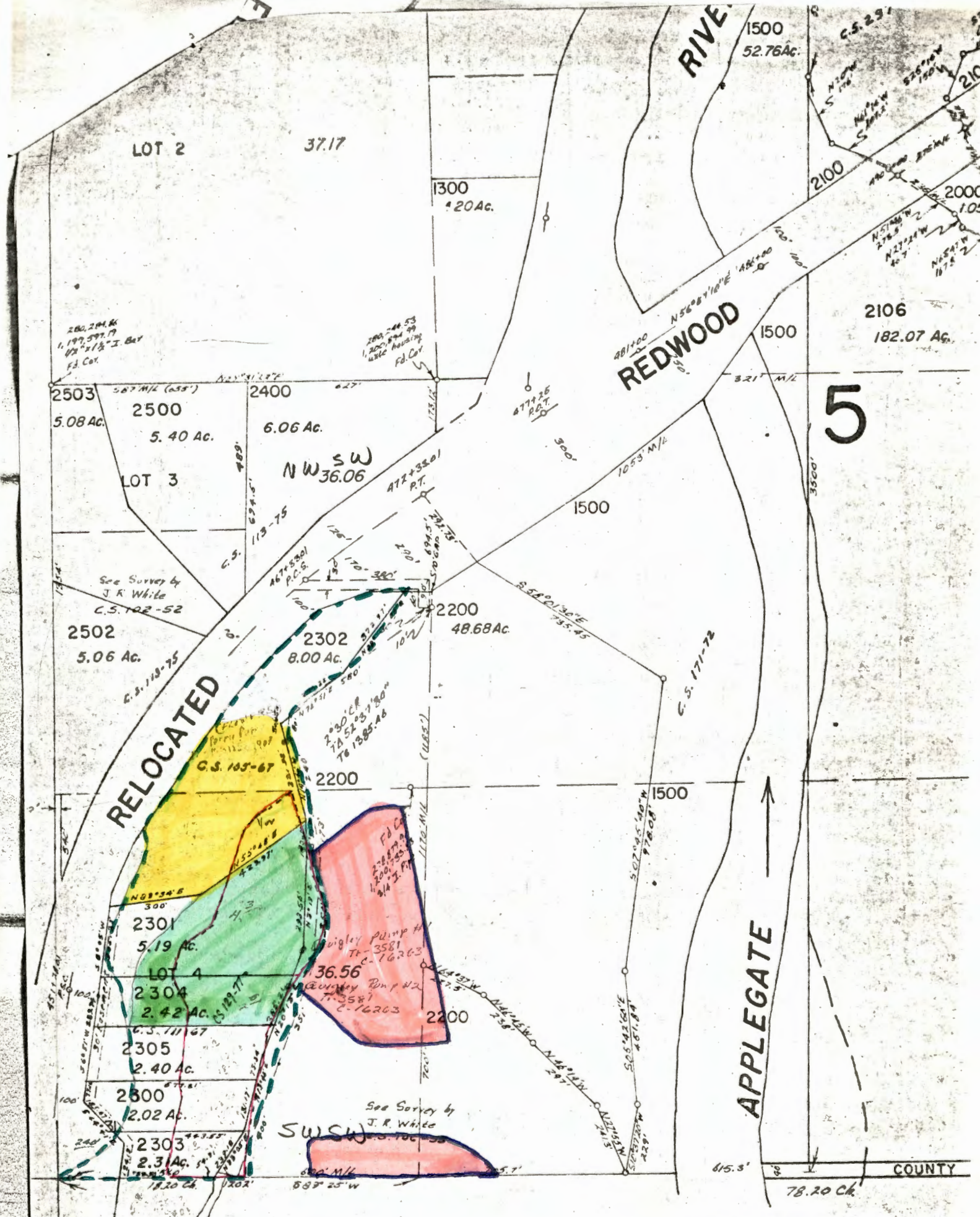
Surveyed Aug. 7-12

1908 Chaplin Cr. 32
 Suppl 20
 1908 State Cr. 200
 1908 State Cr. 1400

State 170
 Applegate 60
 TP 231 230

0.8
 Applegate TP 231

- Transferred out Sp. Or. 4/532 L-13 6.0
- Ch. P.O.D. T-3115 4.0
- Ch. P.O.D. T-3581 6.3
- Cert.# 19885 12.0



LOT 2 37.17

1300
4.20 Ac.

1500
52.76 Ac.

2100
2000
105

2106
182.07 Ac.

REDWOOD

5

2503 5.08 Ac.
2500 5.40 Ac.
2400 6.06 Ac.

LOT 3 NW SW 36.06

2502 5.06 Ac.

2302 8.00 Ac.
2200 48.68 Ac.

RELOCATED

2301 5.19 Ac.

LOT 4 2304 2.42 Ac.

2305 2.40 Ac.

2300 2.02 Ac.

2303 2.3 Ac.

36.56
Bigley Pump #1
T-3581
C-16263
Counley Pump #2
T-3581
C-16263

SW SW
See Survey by J.R. White

APPLEGATE

COUNTY

6

36-6-31

NW SW

SEE MAP 37 6 6