

First American Title™

Parcel ID: 482288

Sentry Dynamics, Inc. and its customers make no representations, warranties or conditions, express or implied, as to the accuracy or completeness of information contained in this report.

RECEIVED

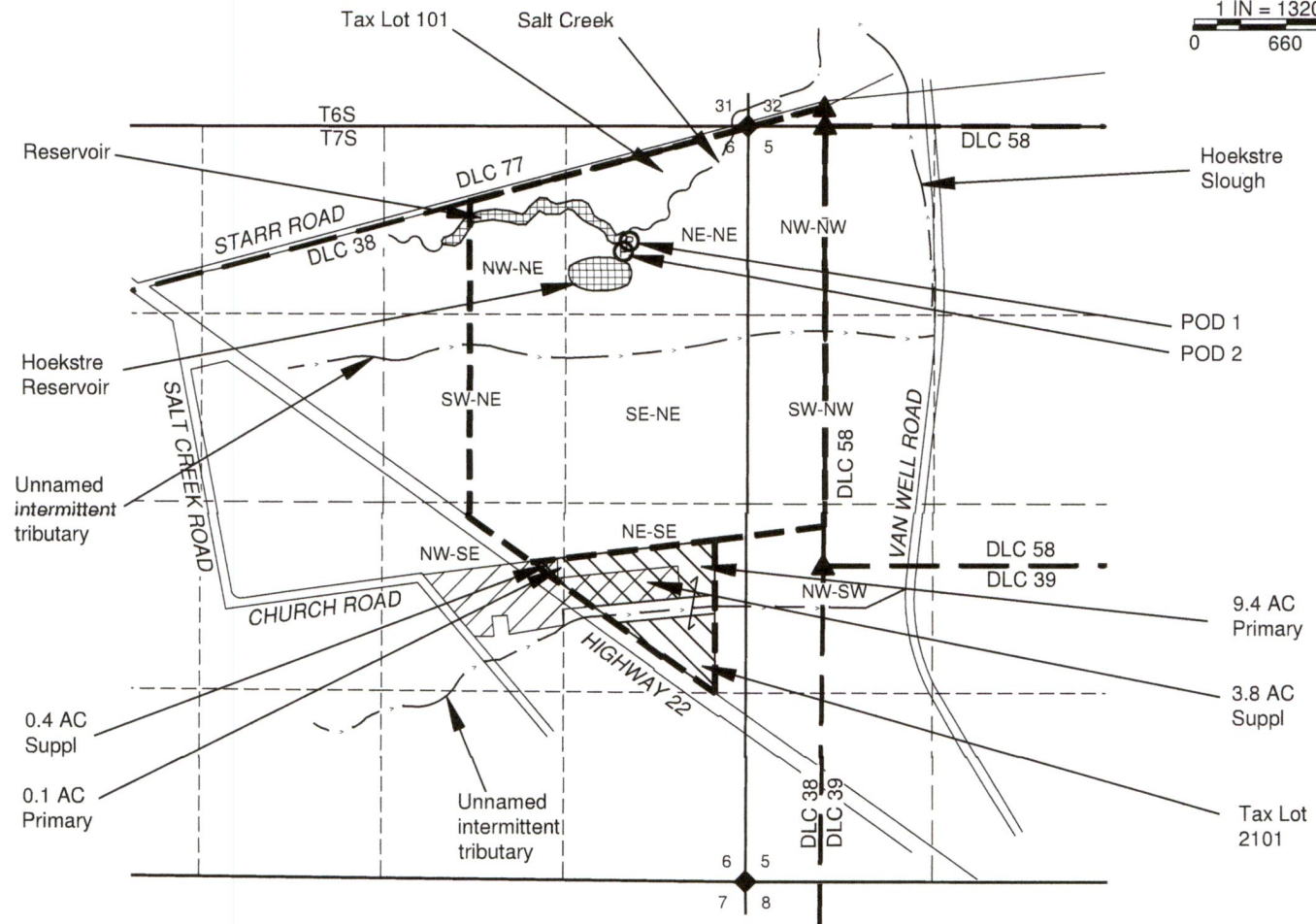
FEB 28 2019

OWRD

MAP FOR Application to use Stored Water S6, T7S, R5W, POLK COUNTY



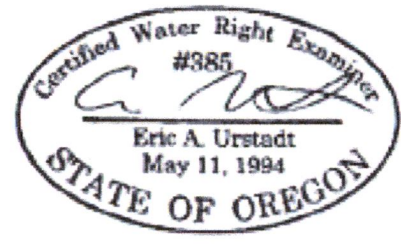
1 IN = 1320 FT
0 660 1320



LOCATIONS OF POINTS OF DIVERSION (POD)
 POD #1 950' S & 1420' W FROM NE DLC 38 (PER CERTIFICATE 39456) - Dam POD and POD to fill Hoekstre Reservoir
 POD #2 1030' N & 1430' W FROM NE DLC 38 (PER CERTIFICATE 39456) - POD from Hoekstre Reservoir.

NOTES:
 THIS MAP IS NOT INTENDED TO PROVIDE LEGAL DIMENSIONS OR LOCATIONS OF PROPERTY OWNERSHIP LINES.
 -PROPERTY LINES AND QUARTER-QUARTER LINES ARE BASED ON THE TAX ASSESSOR MAPS FOR SECTIONS 5 & 6, T7S, R5W.
 -WATER CONVEYANCE LINES SHALL BE ALL WITHIN THE PROPERTY AND THEREFORE ARE NOT SHOWN.

- LEGEND**
- DONATION LAND CLAIM (DLC) CORNER
 - SECTION CORNER
 - POINT OF DIVERSION
 - STREAM OR SURFACE DRAINAGE
 - TAX LOT LINE
 - SECTION LINE
 - QUARTER-QUARTER LINE
 - DONATION LAND CLAIM (DLC) LINES
 - IRRIG - Cert. 14402
 - Proposed Temporary Irrig. from Storage (Suppl. is cross-hatched)
 - Reservoir



RECEIVED
 FEB 28 2019
 OWRD

MAP BY:
ASPEN RURAL LAND CONSULTING
 ERIC URSTADT, PE, PLS
 971-250-1520
 Febr 2019
 WVW-Wakinyan3A



First American Title™

Parcel ID: 320281

Sentry Dynamics, Inc. and its customers make no representations, warranties or conditions, express or implied, as to the accuracy or completeness of information contained in this report.

RECEIVED

FEB 28 2019

OWRD