

CODES

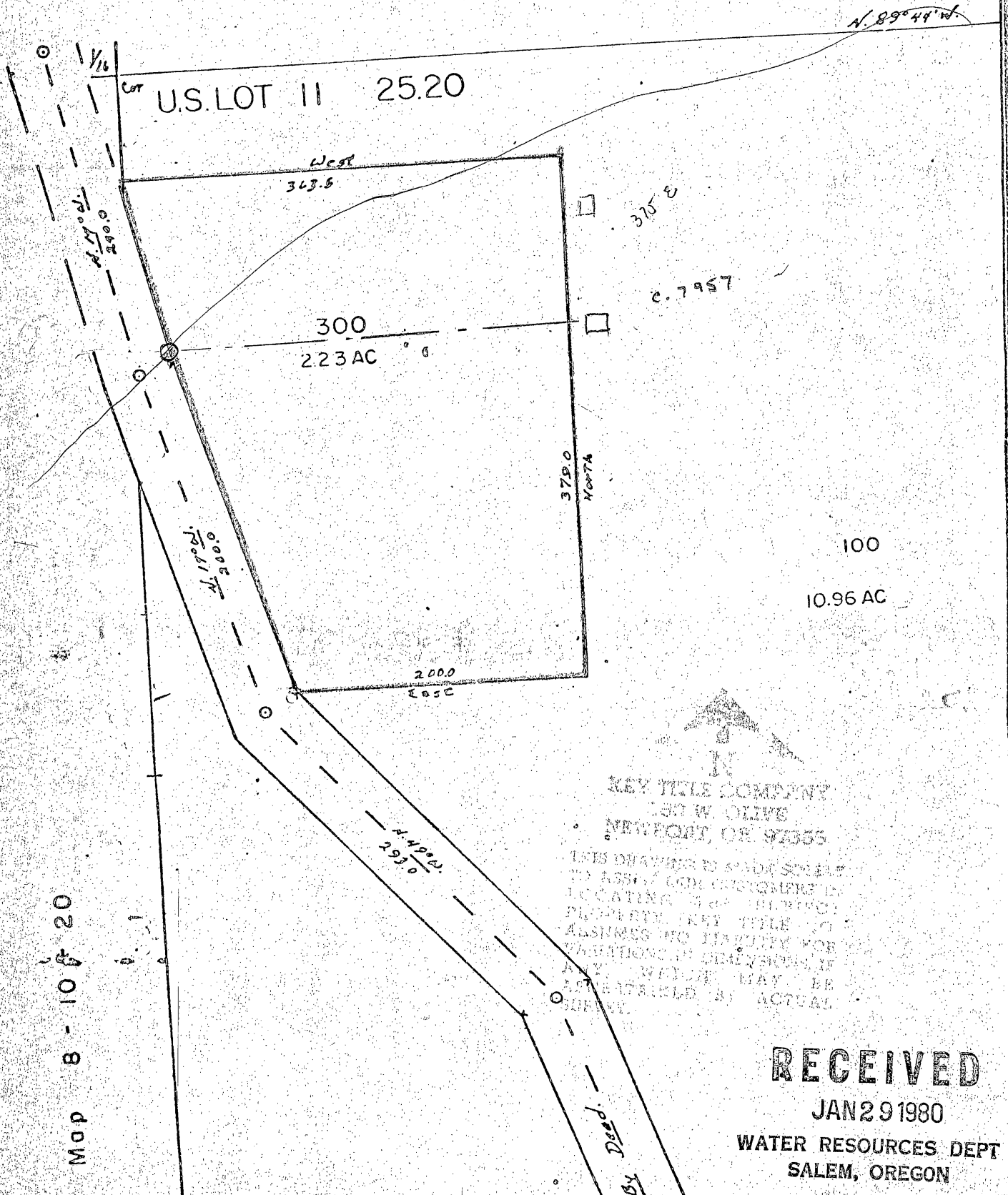
461-

SW 1/4 NE 1/4 SECTION LINCOLN

1" = 100'

8-10-20 AC
TL 300 F

See Map 8 - 10 - 20



KEY TITLE COMPANY
 120 W. OLIVE
 NEWPORT, OR 97365

THIS DRAWING IS MADE SUBJECT
 TO ASSAY AND DISCOVERY IN
 LOCATING AND DELINEATING
 PROPERTY AND TITLE TO
 ALTHOUGH NO LIABILITY FOR
 ERRORS OR OMISSIONS IN
 ANY WAY WILL BE
 ACCEPTABLE AS ACTUAL
 SURVEY.

RECEIVED

JAN 29 1980

WATER RESOURCES DEPT
SALEM, OREGON

Map 8 - 10 - 20

By Dead.