

**IMPORTANT**  
This Map for Assessment  
and Taxation Purposes  
**ONLY**

**SEC.13 T6S R4W WM**  
**POLK COUNTY**  
Scale 1" = 400'

6.4.13

**32-17**

**32-11**

Canceled No.

- 201
- 202
- 403
- 500
- 501

See Map 6.4.14

See Map 6.3.18

See Map 6.4.24

See Map 6.8.19

01/03/18

6.4.13

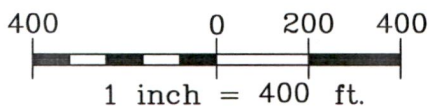
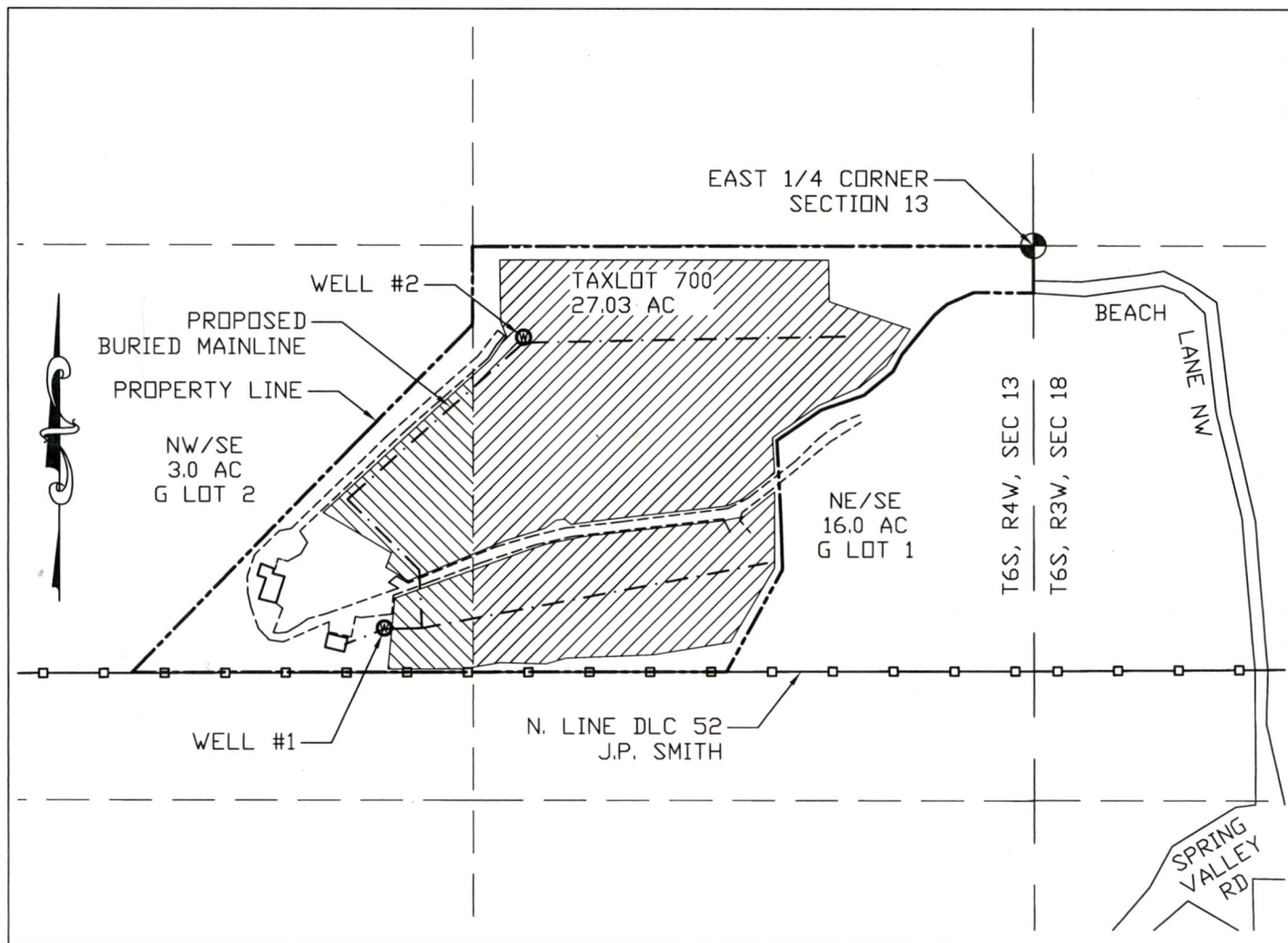
OWRD

MAR 25 2019

44-1777

# LIMITED LICENSE APPLICATION MAP

## T6S, R4W, SECTION 13, TAX LOT 700



Q-Q	Acres
NW/SE	3.0
NE/SE	16.0
Total =	19.0

MAP PRODUCED FOR:  
 JOHN BURNHAM  
 4110 BEACH LANE N.W.  
 SALEM, OR 97304

WELL #1, LOCATED  
 1,550' W AND 910' S FROM  
 THE E. 1/4 CORN. SEC. 13  
 POLK 52191

WELL #2, LOCATED  
 1,215' W AND 220' S FROM  
 THE E. 1/4 CORN. SEC. 13  
 POLK 52073

Irrigation area =	19.00 ac
max. rate (1/80 cfs/ac) =	0.24 cfs
max. rate (1/80 cfs/ac) =	107 gpm
max. duty (1') =	19.00 ac-ft

RECEIVED  
 MAR 28 2019  
 OWRD



NOTE: THIS MAP IS PRODUCED TO INDICATE THE LOCATION OF A WATER RIGHT. IT IS NOT INTENDED TO PROVIDE INFORMATION RELATIVE TO THE LOCATION OF PROPERTY LINES.

MAP BASIS: TAX MAP 6.4.13 WASHINGTON COUNTY, GOOGLE AIR PHOTO, ON SITE INSPECTION.  
 SEF JOB #318-056 REV. DATE: 3-28-19  
 DWG NAME: BURNHAM LL APP MAP



EXPIRES 12/31/2019