

C-1/1

Map For Water Right Application

Section 27, T2S, R3W, Yamhill County

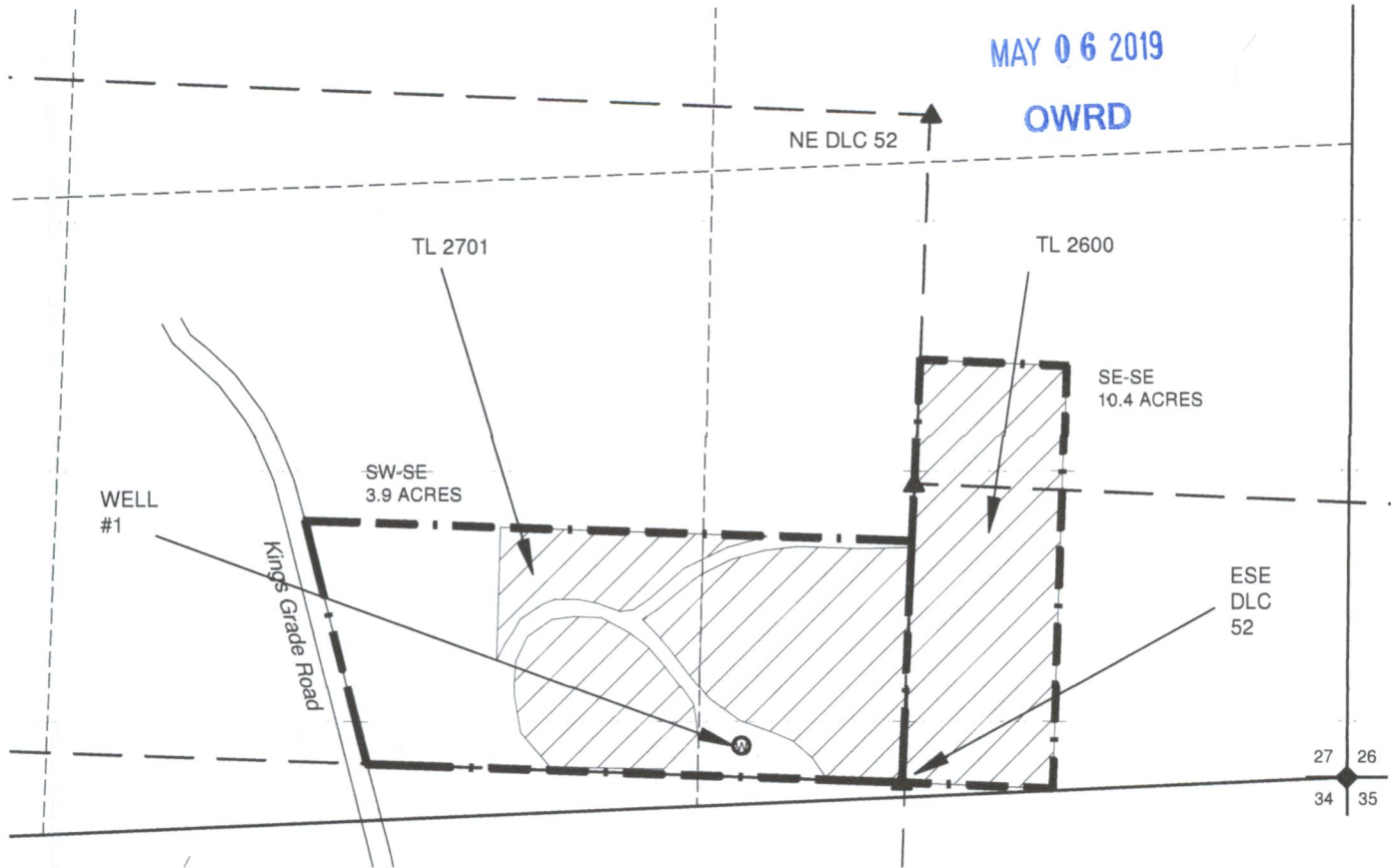


1 IN = 400 FT
0 200 400

RECEIVED

MAY 06 2019

OWRD

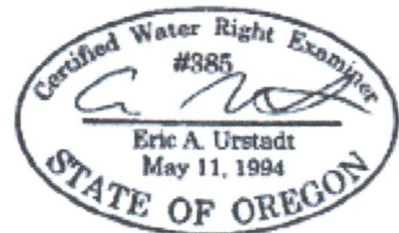


WELL #1 IS 75' N & 335' W FROM ESE DLC 52.

S80°W 1170' from well
to nearest surface water.

NOTES:

- THIS MAP IS NOT INTENDED TO PROVIDE LEGAL DIMENSIONS OR LOCATIONS OF PROPERTY OWNERSHIP LINES.
- PROPERTY LINES AND QUARTER-QUARTER LINES ARE BASED ON THE TAX ASSESSOR MAP FOR SECTION 27, T2S, R3W.
- WATER CONVEYANCE LINES SHALL BE ALL WITHIN THE PROPERTY AND THEREFORE ARE NOT SHOWN.
- THE IRRIGATION AREA AND WELL LOCATION WAS PROVIDED BY THE LANDOWNER AND VERIFIED VIA A 2018 GOOGLE AERIAL PHOTO.
- THE DLC LINES DO NOT MATCH THE LINES ON THE TAX ASSESSOR MAP AND ARE BASED ON THE GENERAL LAND OFFICE MAP FOR THE AREA.



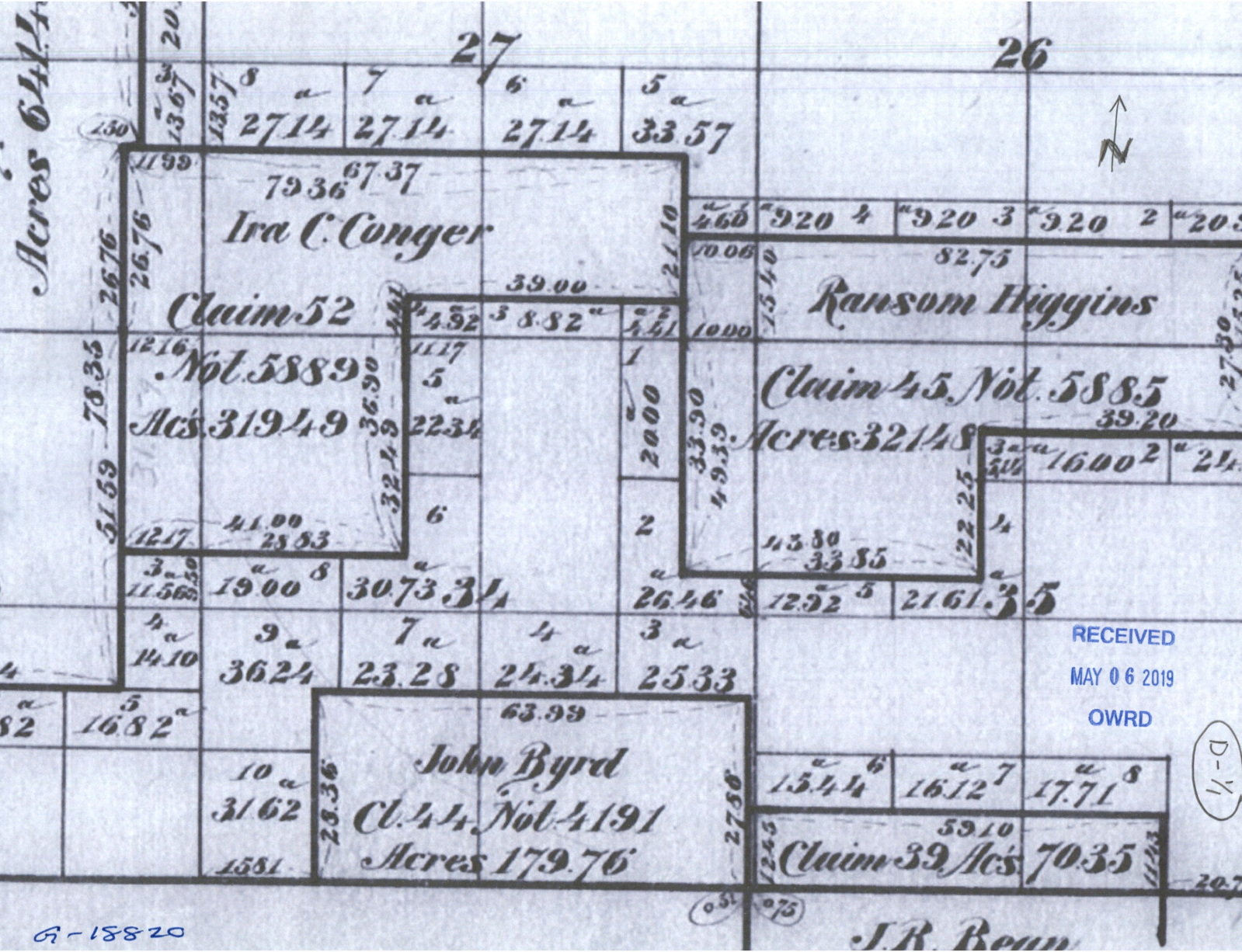
LEGEND

- ▲ DONATION LAND CLAIM (DLC) CORNER
- ◆ SECTION CORNER
- Ⓜ POINT OF APPROPRIATION (WELL)
- STREAM OR SURFACE DRAINAGE
- TAX LOT LINE
- SECTION LINE
- - - QUARTER-QUARTER LINE
- DLC LINES
- ▨ IRRIGATION

MAP BY:
ASPEN RURAL LAND CONSULTING
 ERIC URSTADT, PE, PLS
 971-250-1520
 APR 2019
 Penner 1D

G-18820

Acres 644.4



RECEIVED
 MAY 06 2019
 OWRD

D-11

G-18820

J.R. Beun