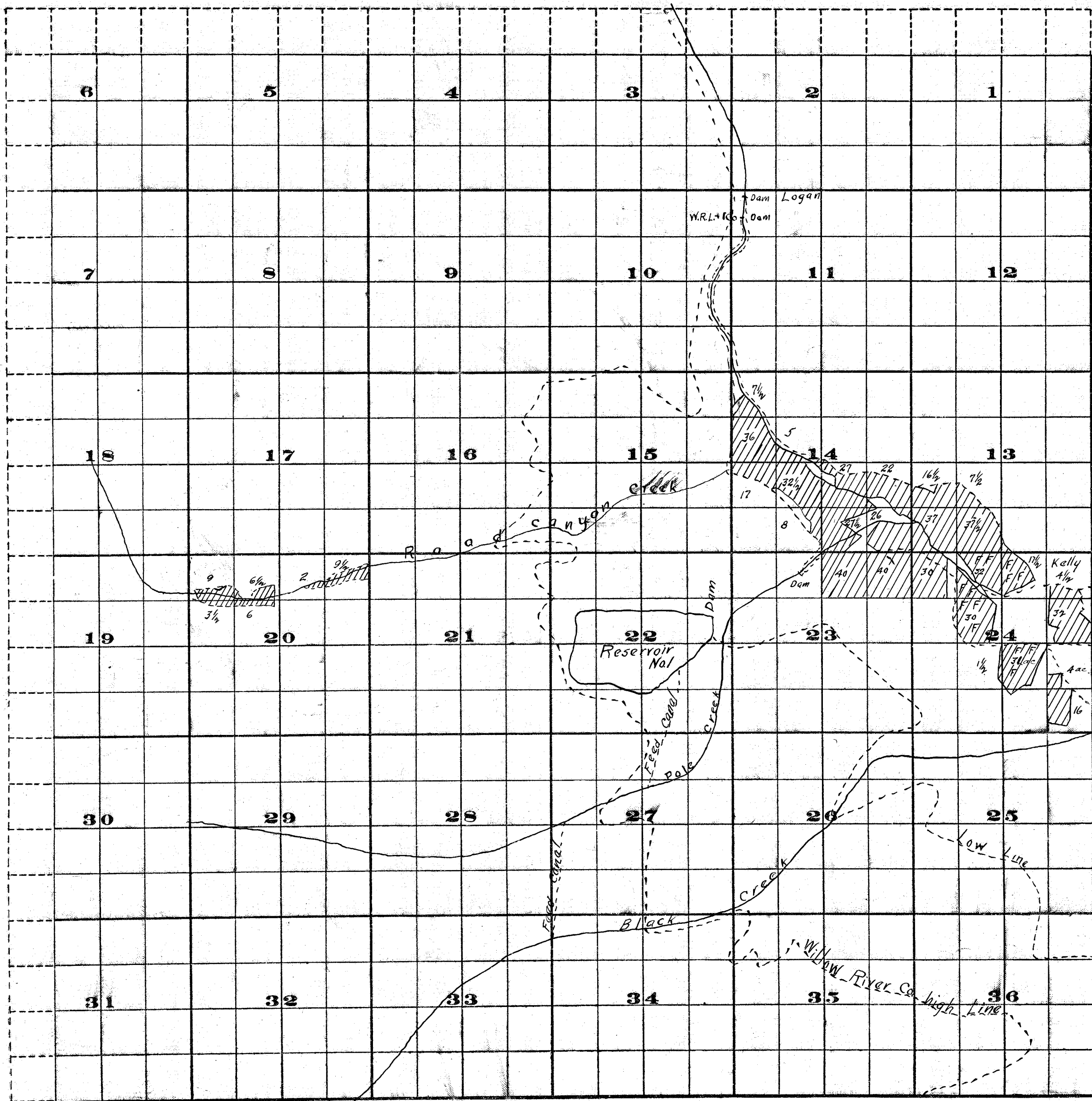


Township 155, Range 42E.



Scale of Feet.

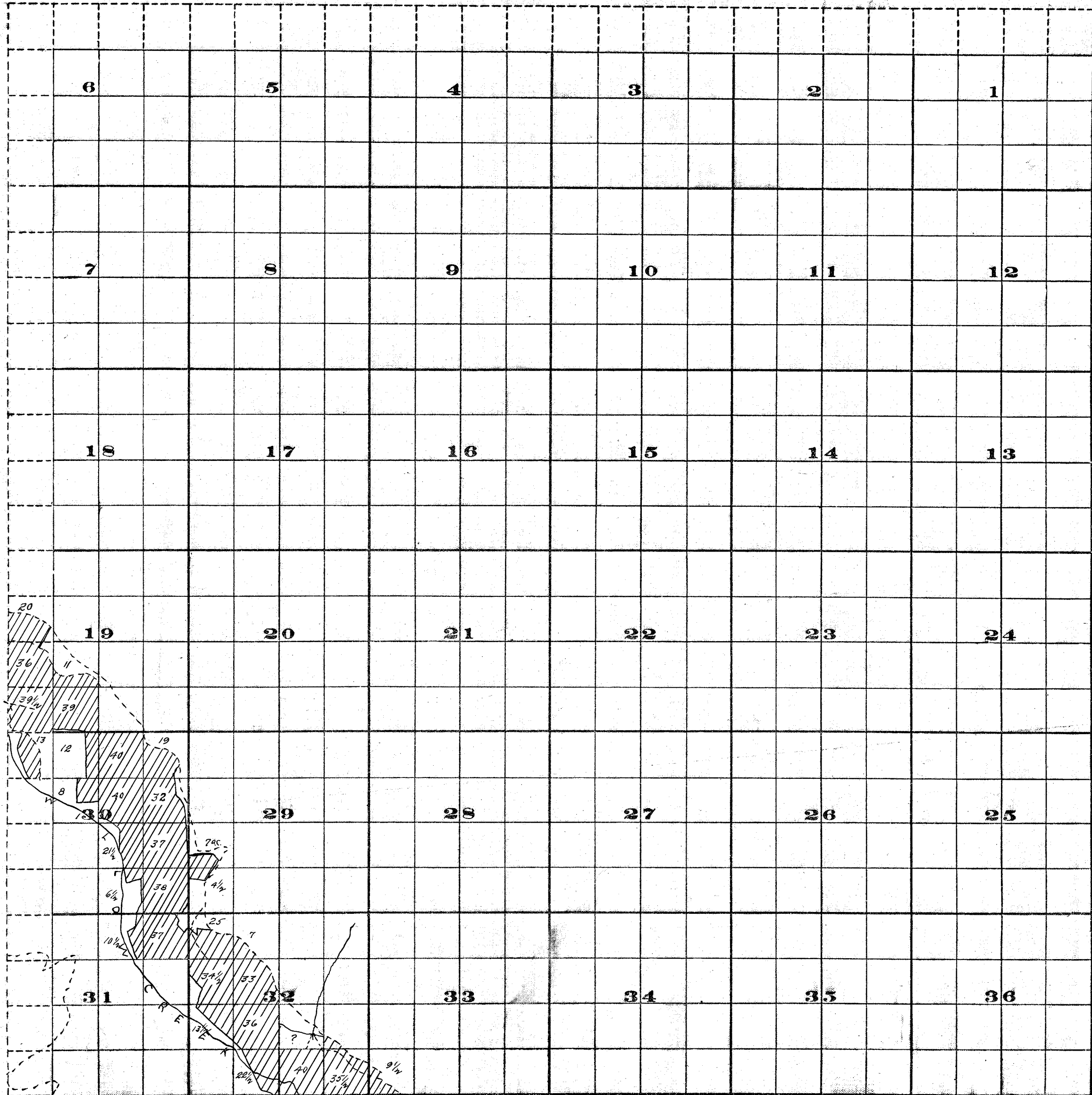
FROM OFFICE OF THE STATE ENGINEER, SALEM, OREGON  
Survey by Rhea Luper  
Nov. 1909.

John H. Lewis State Eng.  
Examined Aug 24, 1910

Adjudication - Willow Creek - Malheur Co.,

12d - 585 ac.  
25-5 mi

Township 15S, Range 43E. W.M.



FROM OFFICE OF THE STATE ENGINEER, SALEM, OREGON

Survey by Rhea Luper  
Nov. 1909

Scale of Feet.

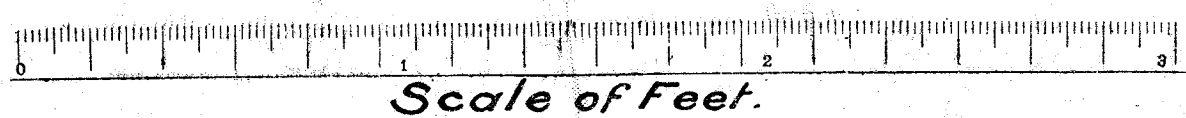
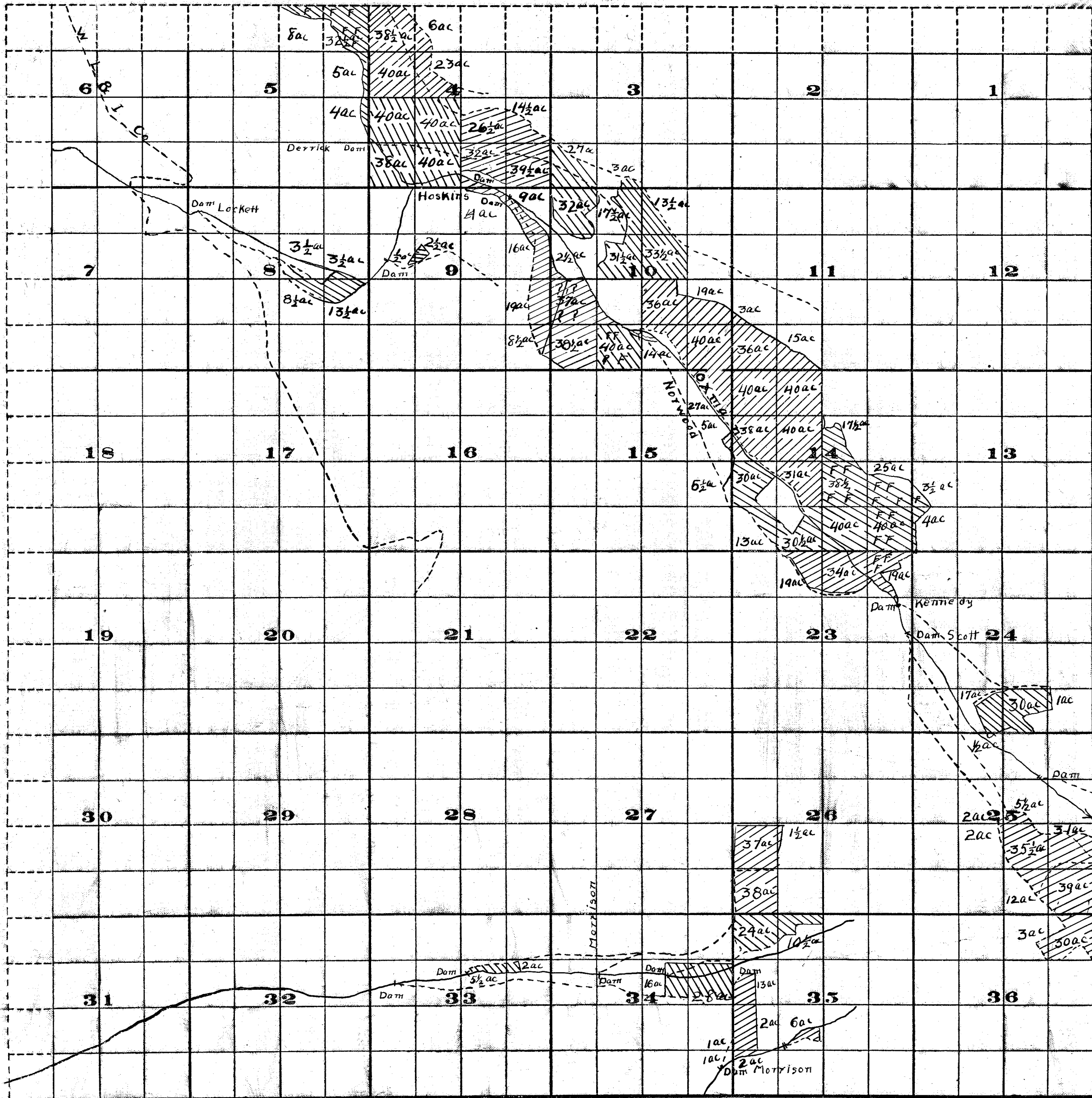
John H. Lewis State Eng.

Examined Aug. 24, 1910.

Adjudication - Willow Creek - Malheur Co.

728 ac -  
7 1/2 mi.

Township 16 S., Range 43 E.



FROM OFFICE OF THE STATE ENGINEER, SALEM, OREGON  
 Survey By Rhea Luper  
 Nov. 1909

*13d-189/200  
 27mi.*

John H. Lewis State Eng.  
 Examined Aug. 24 1910

Adjudication-Willow Creek Malheur Co.