

T8S, R3W, sections 20+21
 Tax Lot 024 00 23 0 Marion County

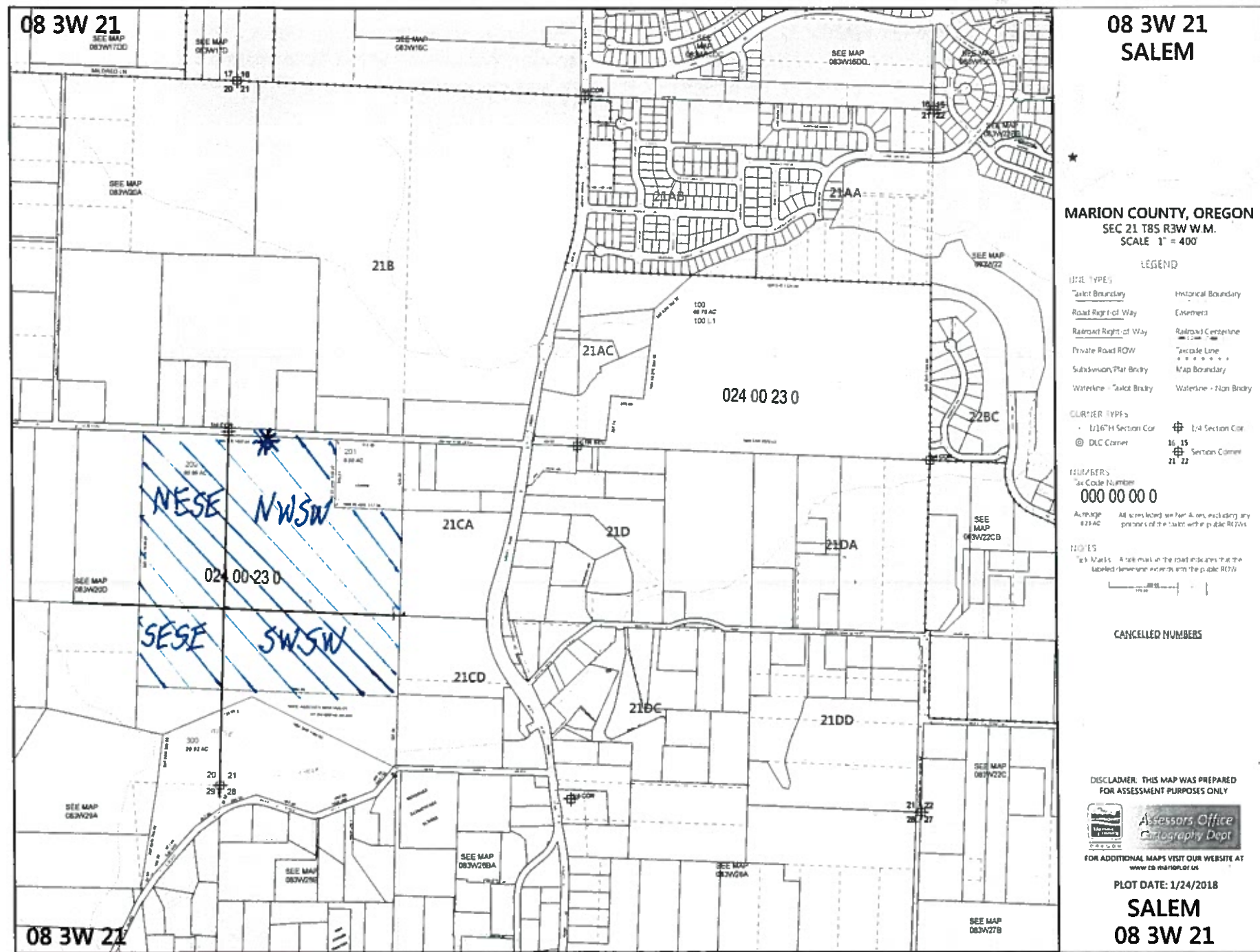


Scale 1" = 1000'

* Proposed Well: In the N.W. quarter of the SW quarter of Section 21, Township 8S, Range 3W, 2450 ft north and 300 ft east of the southwest corner of Section 21, Township 8 Range 3 west.

Acres in each 1/4 section to be irrigated:

NESE of Section 20: 18.8 acres
 SESE of Section 20: 8.8 acres
 NWSW of Section 21: 34 acres
 SWSW of Section 21: 18.2 acres



RECEIVED
 MAY 24 2019
 OWRD

A-18829